



PARK HOTEL GROUP

GLOBAL DIRECTORY

*“We are wherever your
journey takes you.”*





7 **PARK HOTEL GROUP & BRANDS**

SINGAPORE

8 Grand Park City Hall

MALDIVES

10 Grand Park Kodhipparu, Maldives

HONG KONG SAR

12 Park Hotel Hong Kong

CHINA

14 Grand Park Wuxi

16 Grand Park Kunming

JAPAN

18 Grand Park Otaru

20 Park Hotel Kyoto

22 **PARK REWARDS**

24 **GLOBAL BUSINESS PREFERRED PROGRAMME**

26 **GLOBAL DISTRIBUTION SYSTEM (GDS) CODES**

26 **CORPORATE OFFICE, GLOBAL SALES OFFICES**



Deluxe Room, Grand Park City Hall

Park Hotel Group, a leading hospitality company in Asia Pacific, offers the best experiences in excellent locations to make exploring the region with us exceptional, always. Established since 1961, the Group is dedicated to bring joy and love to all guests through authentic service delivered from the heart.

Today, Park Hotel Group has hotels and resorts operating or under development in key destinations and getaway cities across Asia Pacific. Our brand portfolio, which comprises of luxury *Grand Park*, upscale *Park Hotel* and midscale *Destination*, is designed to meet the evolving needs of travellers today and we remain committed to being where life's journeys take you.



GRAND PARK

Grand Park is a luxury hotel brand synonymous with premium accommodation, facilities, service and comfort designed for discerning business and leisure travellers.



PARK HOTEL

Park Hotel, an upscale hotel brand, curates high standards of hospitality, service and contemporary amenities to deliver utmost comfort and convenience for our world travellers today.



DESTINATION

Destination is a midscale brand that focuses on providing quality and affordable accommodation in prime, central locations for the savvy traveller.

SINGAPORE

Grand Park City Hall

10 Coleman Street,
Singapore 179809
T: (65) 6336 3456
F: (65) 6339 9311
E: info.gpch@parkhotelgroup.com
W: parkhotelgroup.com/
grandparkcityhall



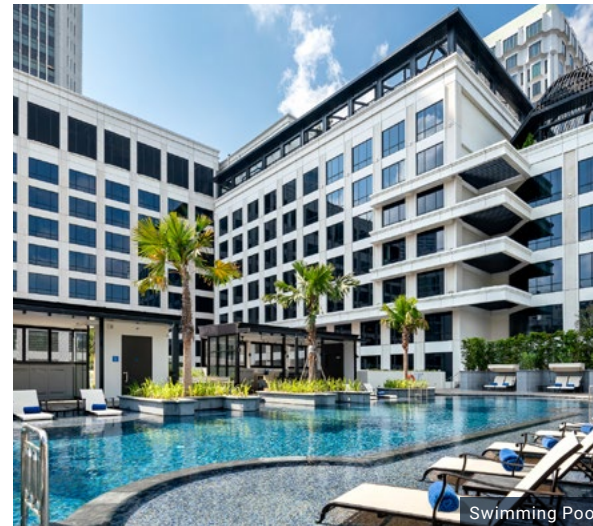
Crystal Club Premier Room



Park Suite



Tablescape Restaurant & Bar



Swimming Pool



62°C Egg, Asparagus, Parmigiano and Black Truffle



3 mins 20 mins

A prime destination within Singapore's Civic District and close to the Central Business District (CBD), Grand Park City Hall embodies the harmonious integration of century-old conservation shophouses and contemporary architecture style. The five-star luxury hotel exudes heritage-inspired modernity within its interiors and offers warm, thoughtful hospitality, enhanced with innovative dining options and mobile technology for a memorable experience for the discerning traveller.

Accommodation

ROOM TYPE	NO. OF ROOMS
Coleman Suite	1
Park Suite	1
Oasis Junior Suite	2
Garden Junior Suite	3
Junior Suite	18
Corner Studio Room	12
Crystal Club Premier Room	28
Crystal Club Deluxe Room	53
Family Room	12
Premier Triple Room	15
Premier Room	55
Deluxe Room	143
TOTAL	343

Restaurants & Bars

TABLESCAPE RESTAURANT & BAR
Tablescape serves up modern European classics and cocktails coupled with a ritualised tableside service within the Neoclassical, Peranakan-inspired multi-functional space. The restaurant also has a private dining room suitable for a party of up to 12 persons.

What's Nearby

- | | |
|---------------------------------|-------------------|
| 1. Funan Mall | 1 min walk/0.1km |
| 2. City Hall MRT Station | 3 mins walk/0.2km |
| 3. National Gallery Singapore | 3 mins walk/0.2km |
| 4. St Andrew's Cathedral | 3 mins walk/0.2km |
| 5. Raffles City Shopping Centre | 3 mins walk/0.4km |
| 6. National Museum | 5 mins walk/0.5km |
| 7. CHIJMES | 6 mins walk/0.5km |
| 8. Fort Canning Park | 7 mins walk/0.5km |

Estimated time varies and is subject to traffic conditions.

Events & Outside Catering

Grand Park City Hall offers several locations within the hotel for that special occasion. Those who wish to organize their celebrations outside the confines of the hotel can engage Park Hotel Group Catering.

The Park Hotel Group Catering team of dedicated planners can create some of the best dining experiences at events, featuring a wide array of offerings from its collection of restaurants and bars.

MALDIVES

Grand Park Kodhipparu, Maldives

P.O Box 2168, North Male Atoll,
 Republic of Maldives
 T: (960) 665 1111
 F: (960) 665 1122
 E: rsvn.gpkd@parkhotelgroup.com
 W: parkhotelgroup.com/
 grandparkkodhipparumaldives



Reef Pool Water Villa



Pool Water Villa



Breeze Poolside Dining & Bar



Outdoor dining area at the Grand Residence



Spa



20 mins

Experience paradise on earth at Grand Park Kodhipparu, Maldives, a luxurious one-island-one-resort destination which is just a mere 20 minutes' speedboat ride from Velana International Airport.

Featuring a collection of idyllic beaches and over water villas, the resort has a 42-meter long infinity pool and pristine white coastline for anyone seeking tranquility. Other facilities such as an award-winning overwater spa, kids' club, beach club, yoga pavilion, and gym are available for all guests.



Accommodation

ROOM TYPE	NO. OF ROOMS
Grand Residence	5
Pool Water Villa	22
Reef Pool Water Villa	20
Beach Pool Villa	18
Lagoon Water Villa	27
Ocean Water Villa	28
TOTAL	120



Restaurants & Bars

THE EDGE

An all-day dining restaurant that serves buffet breakfast, a delectable a la carte lunch menu, themed buffet dinner and lavish cooking stations.

FIREDOOR

An award-winning restaurant known for the Jospier seafood grill. Open for dinner only and reservations are required.

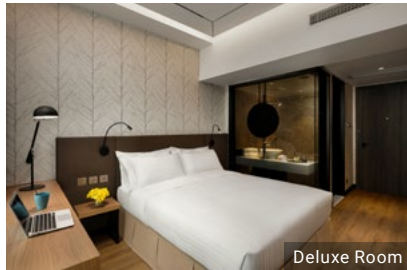
BREEZE

A lively pool bar designed for relaxation. Enjoy live DJ entertainment and tantalising bites throughout the day from 07:00 to 23:00.

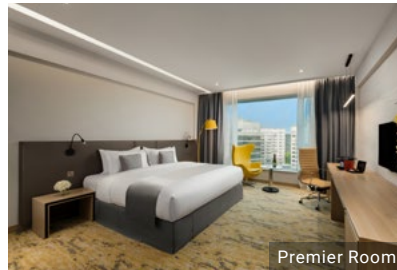
HONG KONG

Park Hotel Hong Kong

61 – 65 Chatham Road South,
Tsim Sha Tsui,
Kowloon, Hong Kong
T: (852) 2731 2100
F: (852) 2739 7259
E: info.phhk@parkhotelgroup.com
W: parkhotelgroup.com/
parkhotelhongkong



Deluxe Room



Premier Room



10 mins 40 mins

Located in the heart of Kowloon's business and entertainment district of Tsim Sha Tsui, Park Hotel Hong Kong is surrounded with endless options of shopping, specialty markets, malls and eateries. With key attractions and transportation options like The Star Ferry, Tsim Sha Tsui MTR station located within a stone's throw of the hotel, guests are provided with easy access to this bustling city. The hotel's spacious rooms and modern amenities also provides maximum comfort for both leisure getaways and business trips.

Accommodation

ROOM TYPE	NO. OF ROOMS
Deluxe Suite	14
Premier Room	64
Deluxe Room	163
Superior Room	93
TOTAL	334



Park Café



Meeting Room



Marigold Bar

What's Nearby

1. Knutsford Terrace	5 mins walk/0.2km
2. Tsim Sha Tsui Promenade	7 mins walk/0.4km
3. Clock Tower	15 mins walk/1km
4. Harbour City	20 mins walk/1.3km
5. Temple Street Night Market	20 mins walk or 10 mins drive/1.4km
6. Ladies' Market	20 mins drive/2.7km
7. Lan Kwai Fong	25 mins drive/3.4km

Estimated time varies and is subject to traffic conditions.

Restaurants & Bars

PARK CAFÉ
Fuelled by culinary creativity and an inspiring modern approach, enjoy all-day buffets featuring a wide selection of fresh delicacies from fresh seafood to Hong Kong specialties.

MARIGOLD BAR
Enjoy an extensive range of cocktails, wine and other alcohol beverages whilst the latest cool grooves set the stage for relaxation amidst a chic ambience.

Meetings & Events

The hotel's superb location in the heart of Tsim Sha Tsui provides a choice of venue for intimate meetings and events.

For an unforgettable conference or celebration, the hotel's three VIP Rooms, appointed with modern facilities can be specially tailored for up to 75 persons.

CHINA

Grand Park Wuxi

401 Zhongshan Road
 Wuxi 214003, Jiangsu P.R. China
 T: (86 510) 8868 8688
 F: (86 510) 8275 2781
 E: info.gpwx@parkhotelgroup.com
 W: parkhotelgroup.com/
 grandparkwuxi



Deluxe Room



Reception



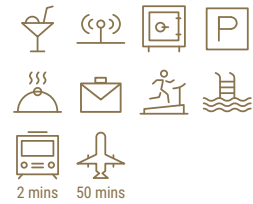
Indulge at Park



Indulge at Park



Swimming Pool



2 mins 50 mins

Conveniently located in the business and shopping district, Grand Park Wuxi provides the perfect location for both business and leisure travellers. With the train station located just minutes away, the five-star hotel offers easy access to and from major cities such as Shanghai and Suzhou. Famous landmarks like Lake Tai are also situated within close proximity of the hotel, enabling one to take in the sights and sounds of the city easily.

Accommodation

ROOM TYPE	NO. OF ROOMS
Presidential Suite	2
Crystal Club Deluxe Suite	2
Crystal Club Executive Suite	2
Crystal Club Junior Suite	6
Junior Suite	17
Service Apartment	55
Crystal Club Room	47
Deluxe Room	131
Superior Room	91
TOTAL	353

Restaurants & Bars

INDULGE AT PARK
 Enjoy delectable International and South-East Asian cuisine fused with the gentle feelings of Jiangnan Water Township in this casual restaurant.

Meetings & Events

With a central location, state-of-the-art meeting facilities and exceptional service, Grand Park Wuxi offers a Grand Ballroom and five function rooms that can accommodate over 400 guests.

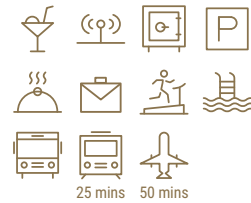
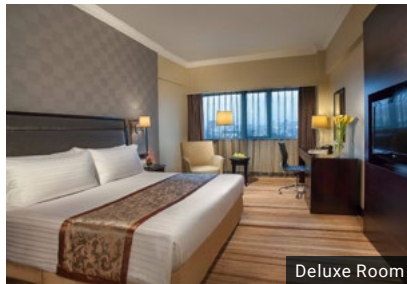
What's Nearby

- | | |
|---|----------------------|
| 1. Commercial Shopping Mall | 1 min walk/0.1km |
| 2. Chong An Temple
Pedestrian Street | 3 mins walk/0.1km |
| 3. Nam Cheong Street | 10 mins drive/1.0km |
| 4. Xihui Park | 20 mins drive/2.5km |
| 5. Yuantouzhu Scenic Area | 40 mins drive/15km |
| 6. Central Television
Wuxi Film Base | 50 mins drive/15.4km |
| 7. Lingshan Scenic Area | 60 mins drive/33.3km |

Estimated time varies and is subject to traffic conditions.

Grand Park Kunming

20 Hong Hua Qiao, Kunming
 650031, Yunnan, P.R. China
 T: (86 871) 6538 6688
 F: (86 871) 6537 8735
 E: info.gpkm@parkhotelgroup.com
 W: parkhotelgroup.com/
 grandparkkunming



With its undulating wave-like façade set amidst the lush green surroundings, the 21-storey Grand Park Kunming is an iconic landmark not to be missed.

Located just minutes away from major landmarks and the Central Business District, the five-star hotel is the perfect sanctuary for both business and leisure travellers in the historic Yunnan capital city of Kunming.

Accommodation

ROOM TYPE	NO. OF ROOMS
Presidential Suite	1
Crystal Club Suite	4
Executive Suite	14
Crystal Club Room	58
Deluxe Room	116
Superior Room	107
TOTAL	300

Restaurants & Bars

INDULGE AT PARK
 Offers international and seafood buffets.

BEER TAVERN
 This alfresco bar is just the spot to enjoy a glass of beer and delicious barbecue.

THE DELI
 Be treated to a delectable selection of homemade cakes and breads.

What's Nearby

- Green Lake (Cui Hu) 2 mins walk/0.31km
- Military School 2 mins walk/0.34km
- Yunnan University 10 mins walk/0.85km
- Kunming Old Street Scenic Area 15 mins walk/1.0km
- Zheng Yi Fang 15 mins walk/1.1km
- Kunming West Hill (Kunming Dragon Gate) 40 mins drive/15km
- Stone Forest 90 mins drive/67km

Estimated time varies and is subject to traffic conditions.

PARK PALACE
 Enjoy authentic Cantonese and Yunnan delicacies in the main dining hall or private rooms.

Meetings & Events

Furnished with state-of-the-art audio visual facilities, the two ballrooms and six function rooms are popular with event planners and conference organisers. The Grand Ballroom can accommodate up to 350 guests.

Grand Park Otaru

11-3 Chikko, Otaru,
Hokkaido Japan 047-0008
T: (81) 134 21 3111
F: (81) 134 21 3322
E: info.gpot@parkhotelgroup.com
W: parkhotelgroup.com/
grandparkotaru



Ocean View Deluxe Room



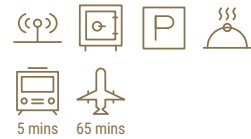
Wedding Chapel



Marina Bar & Restaurant



Terrace Brasserie



5 mins 65 mins

Grand Park Otaru is located in Western Hokkaido and 30 minutes away from the capital city of Sapporo. Surrounded by the scenic vistas of Mount Tengu and Ishikari Bay, the hotel features spacious rooms and suites, unique restaurants & bar, as well as flexible meetings and events spaces.

Accommodation

ROOM TYPE	NO. OF ROOMS
Presidential Suite	1
Executive Suite	1
Bay Suite	3
Japanese-Style Suite	3
Japanese-Style Room	3
Grand Ocean View Room	21
Ocean View Deluxe Room	46
Mountain View Deluxe Room	50
Ocean View Superior Room	103
Mountain View Superior Room	65
TOTAL	296

Restaurants & Bars

MARINA BAR & RESTAURANT
Home to steak specialties and local beverages.

TERRACE BRASSERIE
Enjoy a delectable buffet spread amidst relaxing views of Ishikari Bay.

COCORO
Relish every bite of the perfectly marbled, tender, and hearty beef served in Teppanyaki.

BAY LOUNGE
Indulge in a classic lounge experience with delectable coffee or tea.

What's Nearby

- Otaru Marina 5 mins walk/0.3km
- Sakaimachi Street 5 mins drive/1.6km
- Otaru Canal 7 mins drive/2.3km
- Old Temiya Line 7 mins drive/2.9km
- Mt. Tengu Ropeway Station 15 mins drive/5.1km
- Shukutsu Panorama Observatory 25 mins drive/8.3km
- Kiroro Snow World 40 mins drive/25.7km

Estimated time varies and is subject to traffic conditions.

PATISSERIE
Featuring freshly baked homemade breads.

OTARU MARCHÉ
Shop for the best souvenirs unique to Otaru, Japan.

Meetings & Events

Overlooking stunning ocean views, 10 function rooms offer a myriad of options from corporate boardrooms to dramatic dinner settings. The hotel's wedding chapel, set against the vast skies and sea, is an ideal venue to create lifetime memories.

JAPAN

Park Hotel Kyoto

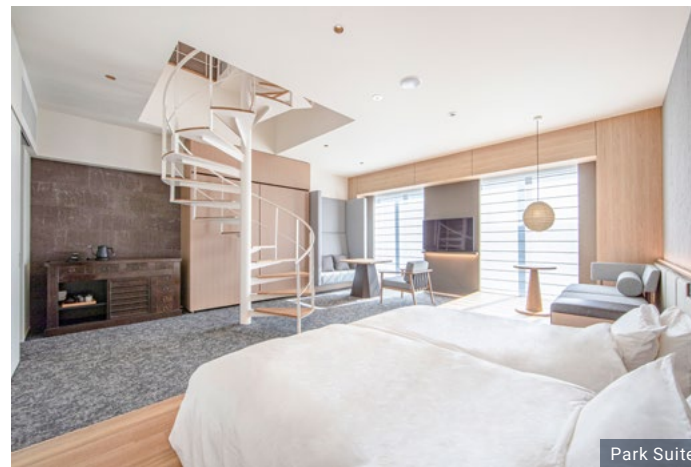
180 Nishiyoko-cho, Nakagyo-ku,
 Koromonodana-dori Oike,
 Kyoto 604-0023
 T: (81) 075 744 6821
 E: info.phkt@parkhotelgroup.com
 W: [parkhotelgroup.com/
 parkhotelkyoto](http://parkhotelgroup.com/parkhotelkyoto)



Deluxe Twin Room



Park Suite Rooftop Garden



Park Suite



Lobby

Park Hotel Kyoto is ideally located near the world famous Nijō Castle, and gastronomic centres Nishiki Market and Pontocho. The hotel interior pays homage to the beauty and rich culture of Kyoto and incorporates arts and crafts handmade locally.

Accommodation

ROOM TYPE	NO. OF ROOMS
Superior Room	46
Deluxe Room	66
Oike Suite	1
Park Suite	1
TOTAL	114

Restaurants & Bars

OIKE CAFÉ
 A health-conscious dining destination that takes pride in serving wholesome and delicious meals, with options for both gluten-free and vegan diners.

THE CORNER
 Enjoy beverages and handcrafted cocktails made using locally sourced ingredients.

What's Nearby

1. Karasuma-oike Subway Station 3 mins walk/0.2km
2. Kyoto International Manga Museum 3 mins walk/0.2km
3. Nijō Castle 8 mins walk/0.7km
4. Nishiki Market 8 mins drive/1.8km
5. Pontocho Alley 10 mins drive/2.4km
6. Kyoto Railway Museum 17 mins drive/4.3km
7. Kinkaku-ji Temple 19 mins drive/5.5km

Estimated time varies and is subject to traffic conditions.



Enjoy More of Life's Moments

PARK Rewards

Make the most of life's moments with Park Rewards and sign up as a corporate member to our complimentary loyalty programme!

Earn and accumulate PARK\$ for every eligible room booking you make, and redeem exclusive Park Rewards benefits, deals and discounts at our participating hotels, restaurants, bars and partners with your PARK\$! You can also earn personal PARK\$ for your personal room and dining spend in the same Corporate account.

With no blackout dates and no PARK\$ expiry*, Park Rewards enables you to enjoy your rewards with greater flexibility.

Member Benefits



One Account
Covers both corporate and personal memberships



No Expiry
PARK\$ do not expire on active members*



Earn & Redeem
At participating hotels and venues



Tiered Privileges
Higher tiers earn and get more



Earn Bonus PARK\$
Through member activity completion



Member-only Rates
Instant confirmation on parkhotelgroup.com



No Blackout Dates
On use of Park Hotel Group e-vouchers



Anytime, Anywhere
Access your online membership account 24/7

* All PARK\$ will expire after 12 months if there is no account activity. But it's easy to maintain your PARK\$ balance. Just earn or redeem once a year through any of our participating hotels or venues. Terms and conditions apply.



For more information about Park Rewards, visit www.parkrewards.com or scan the QR Code.



Global Business Preferred Programme

Get the best value for your business travels

Global Business Preferred Programme offers your small to mid-size business easy access to our participating hotels everywhere, with special rates and exclusive offers.

- 10% off Best Flexible rates* everyday. 15% off for 50 nights and more
- Complimentary Wi-Fi throughout your stay
- 20% off hotel dining
- Exclusive perks with a stellar list of partner restaurants and bars

* Rate is non-commissionable

For further enquiries, please contact us at sales@parkhotelgroup.com



For more information about Global Business Preferred Programme, visit parkhotelgroup.com/business-preferred or scan the QR Code.

CHAIN CODE	PG			
	SABRE	AMADEUS	WORLDSPAN	GALILEO
Grand Park City Hall	24231	SIN117	80411	97836
Park Hotel Hong Kong	13577	HKGPAR	HKGPH	22015
Grand Park Wuxi	4972	WUX179	179	95152
Grand Park Kunming	7857	KMG001	7005	48199
Grand Park Otaru	49701	CTS100	06000	16438
Park Hotel Kyoto	392021	UKYPAR	ITMKY	G5353
Grand Park Kodhipparu, Maldives	314866	MLEGPK	MLEGP	E0074



Crystal Club Lounge



Business Centre



Internet Access



In-room Safe



Parking



Room Service/
In-villa Dining



Kids Club



Water Sports
Activities



Gymnasium



Swimming
Pool



Spa



Shuttle Service
Available



To the Train Station
(by Car)



To the Airport
(by Car/Boat)



Corporate Office

City Hall Square, 10 Coleman Street, #01-21, S179809
T: (65) 8432 3000
F: (65) 6593 6969



Global Sales Offices

SINGAPORE	SHANGHAI	TAIPEI	MUMBAI
JAKARTA	GUANGZHOU	SEOUL	LONDON
BEIJING	HONG KONG	SYDNEY	

For further enquiries, please contact us at sales@parkhotelgroup.com



PARK HOTEL GROUP

SINGAPORE

MALAYSIA

MALDIVES

HONG KONG

CHINA

JAPAN



GRAND PARK







PARK HOTEL



DESTINATION

PARK
Rewardz

    Connect with us @parkhotelgroup
For more information, visit parkhotelgroup.com