

TITANIC

CHAUSSEE BERLIN

Welcome to
TITANIC Chaussee Berlin!



You will find all important
information in the following.

We wish you a pleasant stay.

TITANIC

CHAUSSEE BERLIN



TITANIC

CHAUSSEE BERLIN

We are delighted to welcome you to our hotel, we will do our best to accomplish a comfortable and pleasant stay for you.

The Titanic Chaussee Berlin opened its doors to guests during the winter of 2016 and is located directly in the heart of Berlin, a short walk away from the Central Station, the modern art museum 'Hamburger Bahnhof' and the Oranienburgerstraße. Our hotel places you right on the edge of Berlins most creative neighbourhood Hackescher Markt, full of vibrant culture, cutting edge architecture, fabulous food, great parties and tangible history.

If you wish to receive any further detailed information on our hotel services and surroundings, our Reception and Concierge are happy to assist. We hope you will have the opportunity to visit the historical, touristic and natural beauties nearby.

We wish you a wonderful stay and hope you leave our hotel with great memories.

Follow us on our social media accounts:

IG @ titanichotelsberlin

FB @ TitanicHotelsBerlin

www.titanic.com.tr

ADDRESS

TITANIC Chaussee Berlin

Chausseestraße 30

10115 Berlin

Tel: +49 30 311 68 580

Fax: +49 30 311 6858-890

info.tcb@titanic-hotels.de

TITANIC

CHAUSSEE BERLIN

IMPORTANT TELEPHONE NUMBERS

RECEPTION

803 / 804

HOUSEKEEPING

831

EMERGENCY

110 (Polizei)

112 (Feuerwehr)

INTERNET

The hotel is equipped with standard WIFI wireless hotspots for internet access. Your room and public areas such as the lobby, meeting rooms etc. are fully covered.

If you would like to use the wireless network:

1. Turn on the wireless
2. Please log on to the domain TITANIC HOTEL
3. The system will display a log on screen. Follow the instructions provided and you will be online immediately.

TITANIC

CHAUSSEE BERLIN

CONFERENCE FACILITIES

BUSINESS CENTER

The Business Center is located on the ground floor. Computers and printers are available.

CONFERENCE FACILITIES

TITANIC Chaussee Berlin offers 8 daylight-flooded convention rooms with a variation in size between 45 m² and 232 m², which are located on the first floor of the hotel.

The Titanic Convention Center has a separate entrance and offers the perfect setting for successful events. Our ballroom can host up to 1.000 guests on a total area space of 1.400 m² and can also be divided in three separate spaces. The ceiling height is 7m and thanks to the spatial and logistical conditions, it is also accessible by car.

Our experienced kitchen will be happy to help you put together your catering and our convention team will assist you in implementing your ideas and wishes. In this way, we can ensure that your event is a success.



TITANIC

CHAUSSEE BERLIN

THE ROOM

CHECK-IN / CHECK-OUT

You are able the Check-in from 3 PM onward. Check-out time is 12 PM Noon. Please call the reception for late Check-out options.

DO NOT DISTURB

An electronic “Do Not Disturb” system will automatically be activated when selected on the wall switch by your door. If you do not wish to receive any calls, please contact the ‘Reception’.

WAKE UP CALL

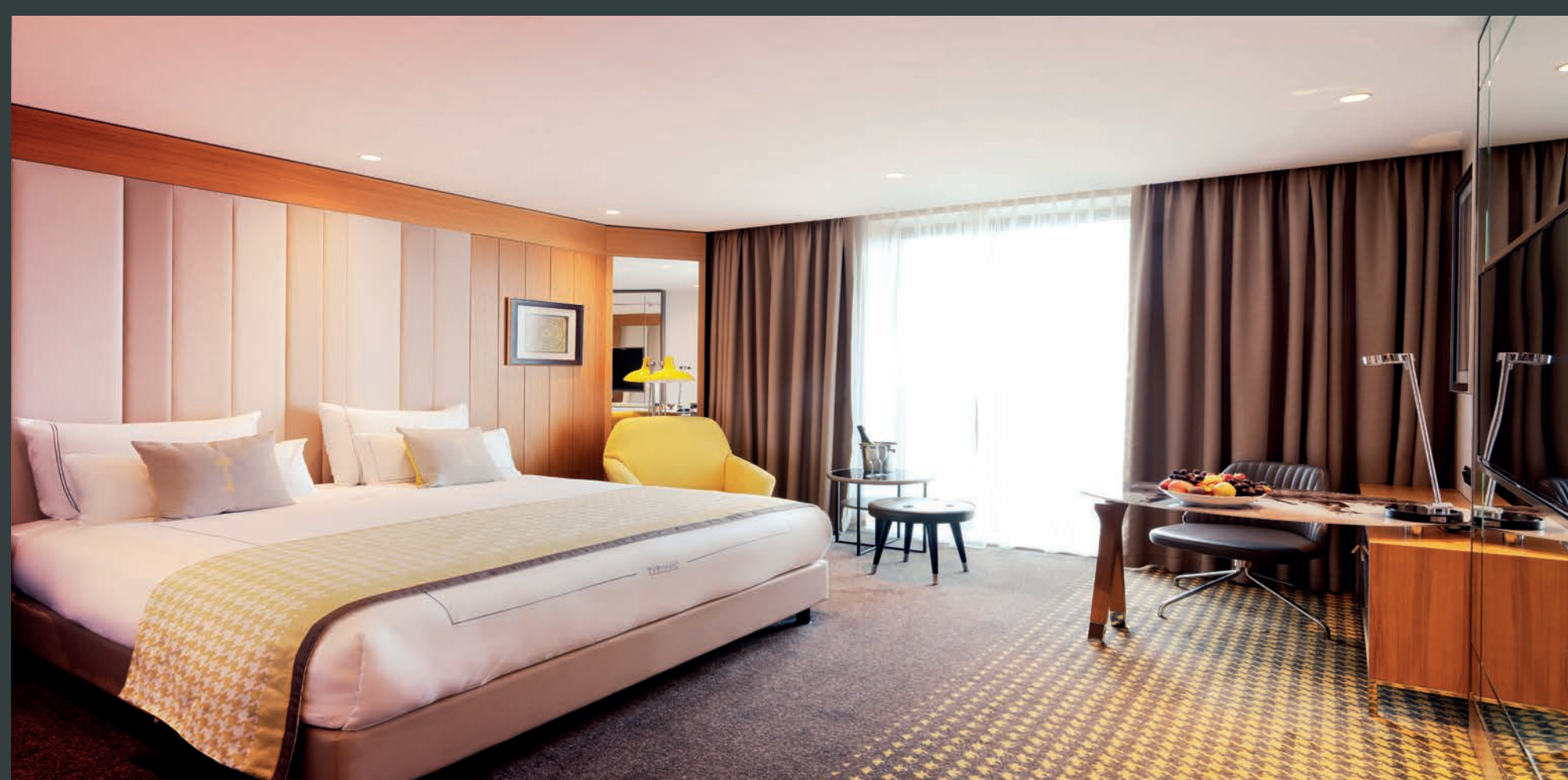
Wake-up call can be ordered through the Reception.

SAFETY DEPOSIT BOXES

A safe is provided in each room for convenience. The hotel management has no responsibility for any valuables that are left in the room unattended.

CHILDREN

Please call the ‘Reception’ for our extra bed policy and rate. Baby cots are complimentary.



TITANIC

CHAUSSEE BERLIN

ROOM SERVICE

867

Enjoy a range of snack and meals from our Room Services Menu, prepared by our inhouse Pascarella Restaurant.

Open daily form 4PM – 11 PM.

MENU

CEASER SALAD	€ 11,50
with poulard breast	+ € 5,50
with prawns	+ € 7,00
BURRATA	€ 13,50
with coloured tomatoes, avocado and mango salsa	
MIXED LEAF SALAD	€ 16,00
with beef fillet stripes	
PENNE Arrabiata	€ 12,00
PIZZA Margherita	€ 9,50
PIZZA Tonno	€ 12,00
PIZZA Salami	€ 12,00
CHEESEBURGER with Fries	€ 8,00
CRISPY CHICKENBURGER with Fries	€ 8,00

DESSERTS

Panna Cotta	€ 8,50
Tiramisu	€ 8,50

DRINKS

Aqua Panna / San Pellegrino	0,25l / 0,75l	€ 3,00 / € 8,00
Coca-Cola/Fanta /Sprite	0,25l	€ 3,50
Orangejuice/Applejuice	0,2l	€ 3,50
Beer (Warsteiner)	0,33l	€ 3,80
Glass Pinot Grigio	0,2l	€ 8,50
Glass Primitivo	0,2l	€ 8,50

TITANIC

CHAUSSEE BERLIN

MINIBAR

Apollinaris Water	€ 3,50
Vio Water	€ 3,50
Coca Cola	€ 3,50
Coca Cola Light	€ 3,50
Orange Juice	€ 4,00
Apple Juice	€ 4,00
Beer	€ 4,50
Pringles	€ 3,00

TITANIC

CHAUSSEE BERLIN

TELEVISION PROGRAM OVERVIEW:

1. TITANIC Hotel Channel
2. Das Erste
3. ZDF
4. RBB Berlin
5. Sky Sports News
6. Discovery
7. Sat.1
8. RTL
9. RTL2
10. Pro Sieben
11. VOX
12. kabel eins
13. Kika
14. Super RTL
15. Tele 5
16. N-TV
17. CNN Int.
18. N24
19. Phönix
20. 3sat
21. Arte
22. MDR Sachsen
23. NDR-FS HH
24. WDR Aachen
25. Sport 1
26. Eurosport 1 DE
27. Euro News
28. NTV-Avropa
29. CNN Türk
30. Show Türk
31. ATV Avrupa
32. EURO STAR
33. Euro D
34. TRT 1
35. TRT 3
36. Sky News Int
37. BBC World
38. CCTV9 Documentary
39. France24-EN
40. Bloomberg Europe TV
41. TV5 Mode Europe
42. TRT Muzik
43. France24
44. AL Jazerra Channel
45. France 24 Arabisch
46. Rai Scuola
47. RTP
48. Russia Today
49. HSE24 Extra
50. NDR-FS MV HD
51. CBCOI
52. Pro Sieben Maxx
59. RTL-Austria
60. RTL CH
61. RTL FS
62. RTL HB NDS
63. RTL-Radio
64. RTL Regional NRW
65. BR SÜD HD
66. BR Klassik
67. RTL 2 Austria
68. RTL Nitro
69. MDR S-Anhalt
70. BR Nord
71. Sat.1 Bayern
72. Sat.1 Gold
73. Sat.1 NRW
74. MDR Thüringen
75. NDR-FS NDS HD
76. STS Int
77. Super RTL A
78. SWR BW
79. SWR RP
80. CNBC Europe

RADIO:

53. Radio Hörbuch
54. Radio neue Hoffnung
55. Radio Berlin 88,8
56. Radio KRAL.FM
57. Radio MDR Klassik
58. Radio RBB Brandenburg

TITANIC

CHAUSSEE BERLIN

BEFINE SPORTS & SPA

Spread over 3.000 m², our Befine Sports & Spa offers a large variety of sport and wellness services. Our 1.000 m² fitness area is fully equipped with state-of-the-art Techno Gym equipment and hosts a wide range of exercise classes as well as personal training sessions.

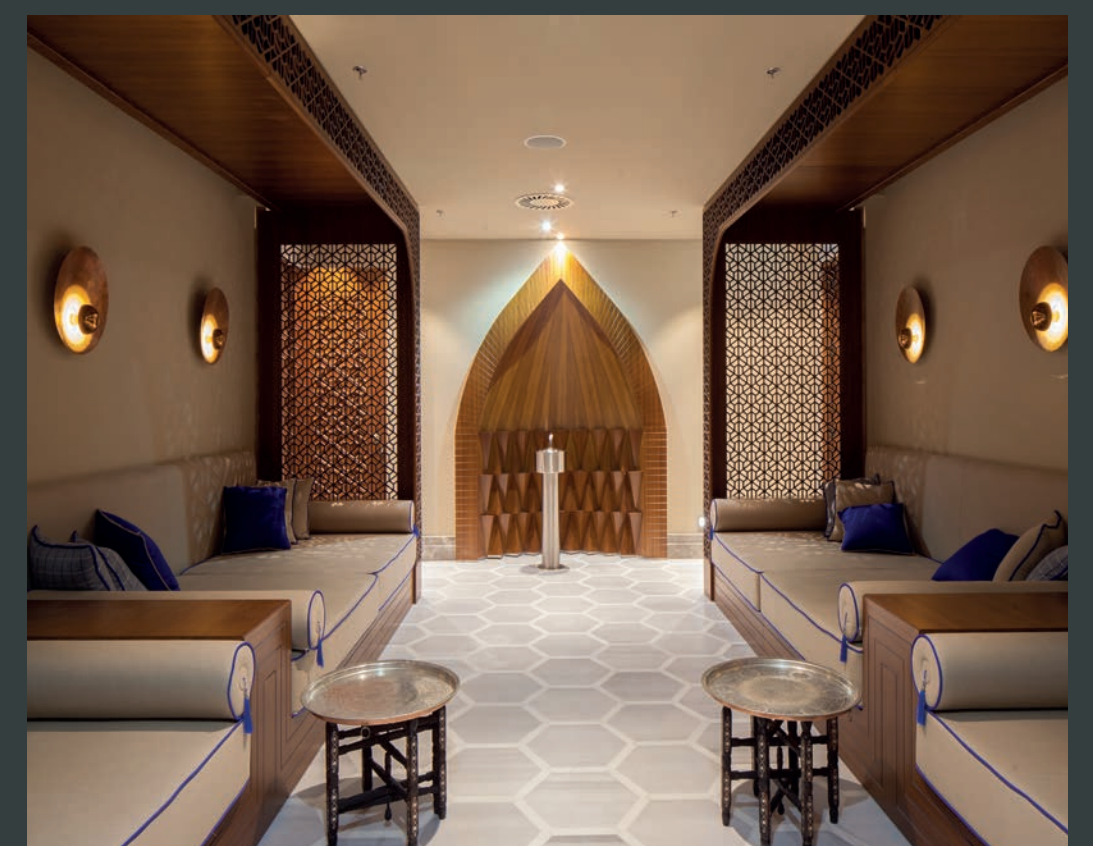
Our wellness area consists of massage treatment and silent rooms, an oriental turkish hamam, a steam bath, a dry sauna and a daylight in-door pool.

OPENING HOURS

Weekdays 7 MA – 11:30 PM

Weekend 8 AM – 10 PM

To enter the SPA and Fitness Area, we charge an entrance fee of €14 per day for our hotel guests.



TITANIC

CHAUSSEE BERLIN

RESTAURANT AND BAR INFORMATION



ALESTA RESTAURANT 863

The restaurant Alesta is our breakfast restaurant and is located on the first floor, with enough space for up to 300 guests across 500 m². Start the day with our extensive breakfast buffet. Enjoy a wide selection of cold and hot dishes, sweet and savoury delicacies and a choice of freshly prepared meals.

06:30 AM- 10:30 PM Weekdays

06:30 AM – 11 PM Sundays and Public Holidays



PASCARELLA RESTAURANT 876

Pascarella is our inhouse italian restaurant, offering fine mediterranean cuisine in a charming ambience, excellent for dinner or a quick and tasty business lunch.

Open daily 11 AM – 11PM

TITANIC

CHAUSSEE BERLIN

RESTAURANT AND BAR INFORMATION

HASIR BURGER 869

At Hasir Burger, our inhouse burger restaurant, our team creates a wide range of freshly made burger variations in great quality and for almost every taste. Perfect as a quick snack inbetween.

Open daily 11 AM – 11 PM

CHARLOTTE BAR 864

The lobby bar „Charlotte“ is right in the core of the hotel. Enjoy a nice drink or snack whilst you think back on your day in this exciting city.

Open daily 6 PM – 12AM

PATSSERIE CÉLINE

Our inhouse patisserie Céline enchants your senses with its sweet treats. The pastries are freshly made daily and will sweeten up the start of your day. Our brioche burger buns from our Hasir Burgers are made here. Open daily.



TITANIC

CHAUSSEE BERLIN



TITANIC

CHAUSSEE BERLIN

FURTHER INFORMATION

LAUNDRY AND IRONING SERVICE

From Monday to Friday you can hand in your laundry until 09:00 AM and get it back in your room by 6:00 PM on the same day. If the laundry is handed in by 01:00 PM, the laundry will be returned to you the following day. Please note that an express surcharge of 100% will be charged for short-term cleaning.

We also offer a ironing service every day from 06:00AM – 07:30PM or, you can order an ironing set to your room. Please find the detailed price list for your dry cleaning, ironing aswell as laundry bags in your wardrobe. If you require this service, please contact the reception or housekeeping directly, so that we can personally pick up the items. Please complete and sign the list and place it in the laundry bag. In case of any discrepancies, you will be notified. Should your count be incomplete, the hotel's count will be valid.

Any claim concerning the cleaned articles must be reported and accompanied by the laundry list within 24 hours. In case of loss or damage the hotel will be liable for no more than seven (7) times the cost of the cleaning of the damaged article.

HOUSEKEEPING

Your room is cleaned every three days and your bed linen is changed every two days. If you require a change of towels during your stay, please leave the towels on the bathroom floor so that we can provide you with fresh towels.

If you do not wish for housekeeping service, please activate the „Do not disturb“ button next to your bed or hang the sign outside on the door handle with the appropriate side.

TITANIC

CHAUSSEE BERLIN

FURTHER INFORMATION

LUGGAGE SERVICE & STORAGE

Our team is available to handle your luggage and you can keep your luggage in our luggage room until your departure time as a complimentary service of our hotel. Please call the Reception for assistance.

GARAGE

Our parking garage is available to our guests for a fee of € 20,00 per night. If you wish to stay parked longer than your stay, please contact the Reception.

LOST & FOUND

Please report any lost or found articles to the reception.

LETTERS AND POSTAGE STAMPS

The Reception will be happy to post your letters for you or sell you postage stamps.

BIKE HIRE

You can rent bicycles with a lock and helmet. € 20,00 is charged per bike per day.



TITANIC

CHAUSSEE BERLIN

HOTEL RULES AND GUIDELINES

PETS

Your pets are welcome to stay with us, but please note that we charge a fee of €30.00 per day. Please contact our housekeeping team, so they can provide you with blankets and dog bowls throughout your stay.

CIGARETTES / CIGARS

TITANIC Chaussee Berlin is a non-smoking hotel. Please be aware that smoking is not permitted either in the hotel's public areas nor in the rooms. The hotel will charge a fee of 100€ if a guest smokes in a room for extra cleaning.

EMERGENCY EXIT

To locate the nearest emergency exit, please consult the plan on the back of your room's door. Please also acquaint yourself with the detailed information about the emergency procedure.

TITANIC

CHAUSSEE BERLIN

INFRASTRUCTURE

DOCTOR

Please contact the Reception if you are in need of a doctor, the doctor will come to the hotel. If you require a Hospital, there are two around the corner:

Bundeswehr Hospital Berlin
Scharnhorststraße 13, 10115 Berlin / Telephone number: 030 28412289

Charité University Hospital
Charitéplatz 1, 10117 Berlin / Telephone number: 030 45050

PHARMACY

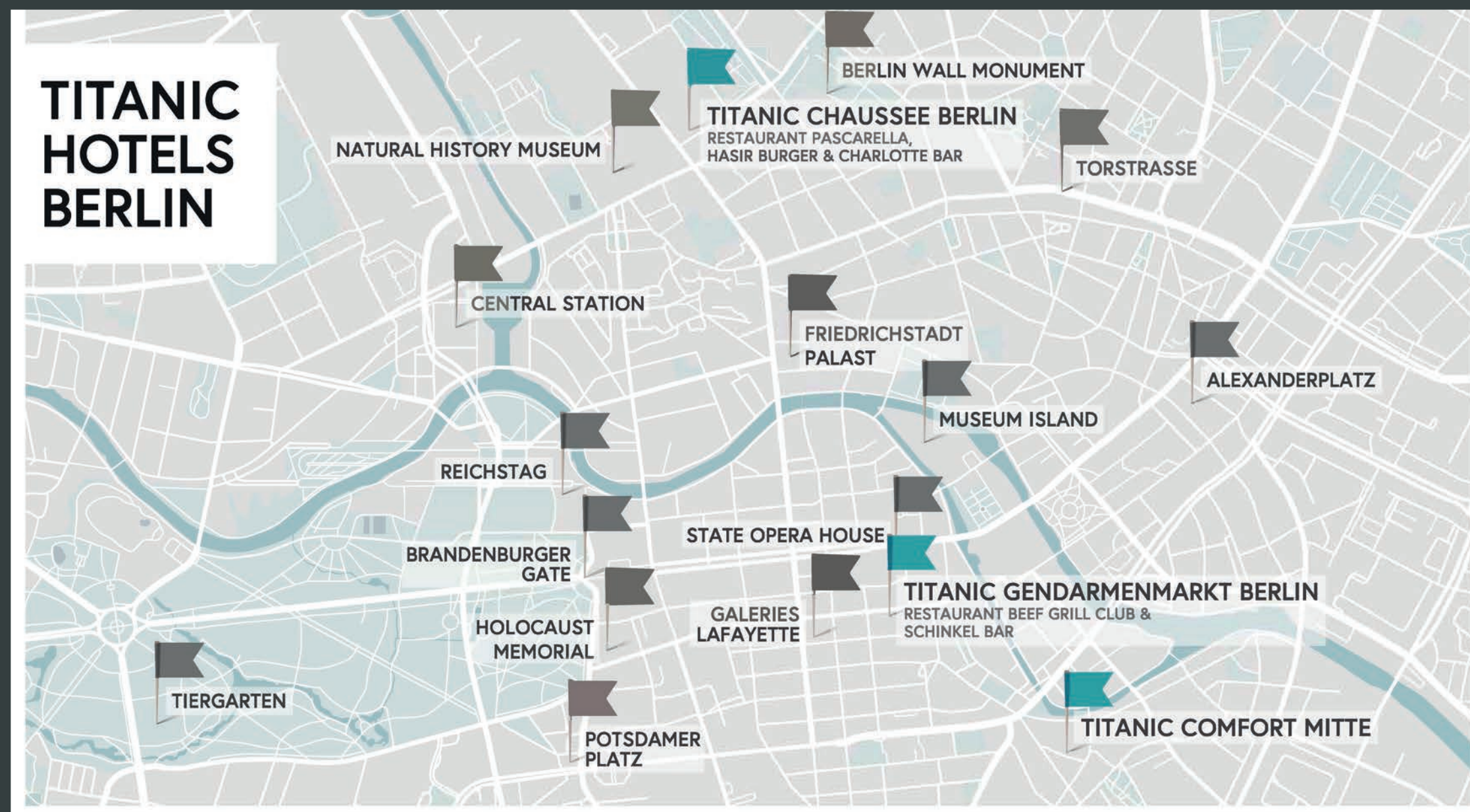
Please contact the Reception if you require a pharmacy. There are two around the corner:

Feuerland Apotheke
Chausseestraße 42, 10115 Berlin / telephone number: 030 23458210

Apotheke Berlin Hauptbahnhof
Europaplatz 1, 10557 Berlin/ telephone number 01806996633

TITANIC

CHAUSSEE BERLIN



Our Hotels are located in the heart of Berlin, setting you in the bustling center of the city.

TITANIC Gendarmenmarkt Berlin

Französische Straße 30, 10117 Berlin

Tel: +49 30 2014 370 0

Fax: +49 30 2014 370 890

info.tgb@titanic-hotels.de

TITANIC Chaussee Berlin

Chausseestraße 30, 10115 Berlin

Tel: +49 30 311 68 580

Fax: +49 30 311 6858-890

info.tcb@titanic-hotels.de

TITANIC Comfort Mitte

Elisabeth-Mara-Straße 4, 10117 Berlin

Tel: +49 30 767 71 870

Fax: +49 30 767 71 8725

info.tcm@titanic-hotels.de

We wish you a wonderful stay at our TITANIC Hotels Berlin!