



SCHOOL FORMALS

HOTEL GRAND CHANCELLOR BRISBANE

FORMAL PACKAGES

ESSENTIALS PACKAGE

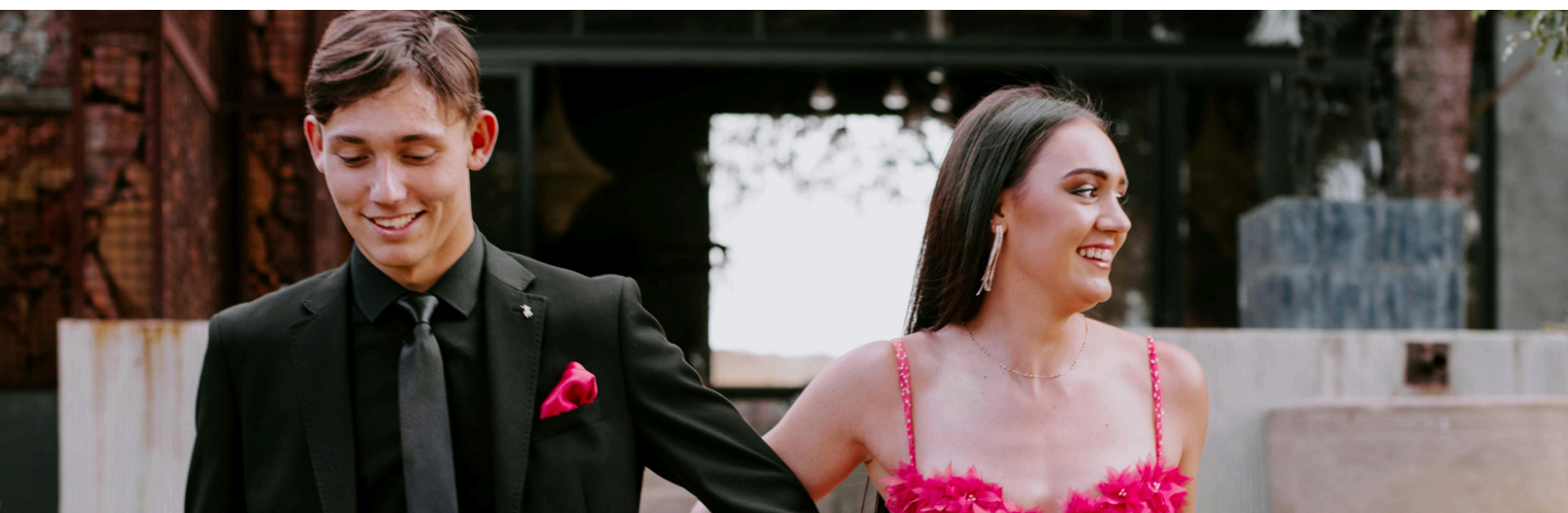
half hour pre-dinner drinks
4.5 hour non-alcoholic beverage package
your choice of two course dining menu, served alternate drop
freshly brewed tea, coffee & hot chocolate
black or white table linen
black or white chair covers
choice from a selection of chair sashes
choice from a selection of coloured linen napkins
choice from a selection of table centrepieces
tea light candles on mirror base
dance floor, lectern & microphone
security staff
complimentary parking for attendees and family

upgrade your package to include coloured room lighting or additional AV with our preferred AV supplier
minimum 50 attendees

ULTIMATE PACKAGE

half hour pre-dinner drinks
4.5 hour non-alcoholic beverage package
your choice of two course dining menu, served alternate drop
freshly brewed tea, coffee & hot chocolate
black or white table linen
black or white chair covers
choice from a selection of chair sashes
choice from a selection of coloured linen napkins
choice from a selection of table centrepieces
tea light candles on mirror base
dance floor, lectern & microphone
professional DJ for four hours
photo booth for three hours
security staff
complimentary parking for attendees and family

upgrade your package to include coloured room lighting or additional AV with our preferred AV supplier
minimum 50 attendees



MENU

select entree & main OR main & dessert

ENTREE

served alternate drop

smoked chicken caesar salad w/ sourdough crumb
pasta w/ basil / cherry tomatoes & parmesan

MAIN

select two mains- served alternate drop

eye fillet w/ herb jus (served medium)
chicken breast w/ tomato jus
barramundi **or** salmon w/ lemon dressing

all mains served with garlic mash & steamed greens

DESSERT

served alternate drop

rainbow layer cake w/ double cream
chocolate fudge cake w/ double cream & berries

freshly brewed tea, coffee & hot chocolate

specific dietary requirements may incur an additional charge | menu subject to change

