

# PARADOX

SINGAPORE  
MERCHANT COURT



## PARADOX SINGAPORE

THE URBAN RESORT IN SINGAPORE,  
CHARACTERISED BY ITS LIVING  
TRADITIONS, EMBRACING INNOVATION,  
DELIVERING SERVICE FROM THE HEART



### *Location*

A GREAT PLACE TO MEET,  
GROW BUSINESSES & RELAX

Experience the duality of a cosmopolitan city and the serenity of a resort-style oasis. Situated next to Clarke Quay MRT station, Paradox Singapore Merchant Court is a stone's throw away from the hip and bustling entertainment and dining district of Clarke Quay and Boat Quay, the financial hub of Raffles Place and the convention areas at Suntec and Marina Bay Sands.

Find your source of inspiration from the picturesque view of the Singapore River. Sample diverse flavours at the famed Ellenborough Market Café and stay fit during your travels with our 24-hour fitness centre, a free-form swimming pool and a wellness spa. Whether your stay is for business or leisure, enjoy the comfort, relaxation, and genuine service in the heart of Singapore.



### *Guest Rooms*

URBAN ELEGANCE & IMPRESSIVE VIEWS

Feel right at home in one of our 476 chic guest rooms and suites. Bask in the natural light and enjoy the modern décor, not to forget the calming view of the Singapore River from many of the rooms. You can also relax in one of our Executive Rooms or Suites, which provide exclusive access to the Executive Lounge for complimentary refreshments served during select times of the day.





## *Restaurant & Bar* CONTEMPORARY DINING IN THE HEART OF THE CITY

Let our renowned chefs at Ellenborough Market Café delight you with their delicious concoctions featuring popular Peranakan (or Straits Chinese), local and international specialities. Set amidst a lush landscape and next to our swimming pool, the Blue Potato offers a delicious local and Western à la carte menu. Looking to unwind in style? Enjoy themed afternoon teas or Asian-inspired signature cocktails and tapas at the classy Crossroads Bar. Feel the cool river breeze and enjoy stunning sunsets over a meal at the Alfresco dining area.

## *Conference, Wedding & Events* PERFECT SETTING & PROFESSIONAL SUPPORT

From private board meetings to lavish celebrations, we offer the perfect setting for your event. Facilities include seven meeting rooms and a 680 square metre column-free ballroom with a ceiling height of 6 meters, which comes with an adjoining foyer perfect for a private reception. Whether for an international conference or an exclusive intimate meeting, our facilities, service and team are guaranteed to leave a lasting impression. With an elegant ballroom, exclusive foyer and gazebo, and fine cuisine, we can assure you that every wedding will be a memorable and unforgettable one.



## *Spa & Sport* REJUVENATE YOUR BODY, MIND & SOUL

Experience the benefits of holistic wellness and beauty offerings from our Spa and Fitness Centre. Relax and sink into pure bliss with our spa treatments which use various essential oils, made to work in tandem with the well-equipped and modern sports training facilities. Our 24-hour two-level fitness centre, resort-style pool with water slides, and an outdoor jacuzzi will leave you feeling refreshed and re-energised.

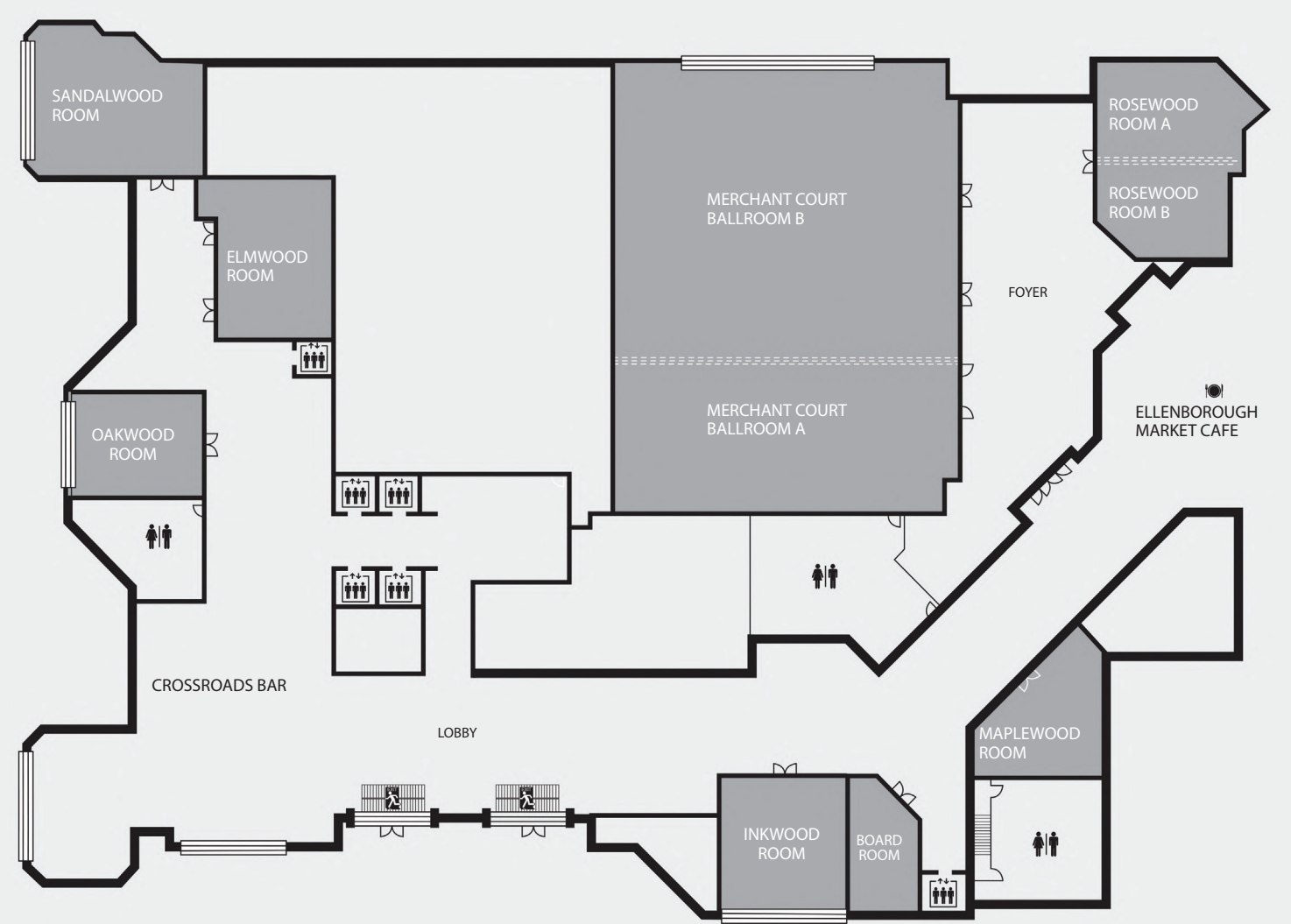
## *Facilities & Services* ENSURING YOUR COMFORT & CONVENIENCE THROUGHOUT

- Non-smoking hotel with 476 well-appointed spacious guest rooms and suites
- High ceiling pillar-less ballroom with an exclusive foyer for up to 480 guests & a dedicated banquet culinary team for a personalised dining experience
- 7 meeting rooms equipped with state-of-the-art audio-visual equipment on the same level for convenient breakouts
- Gazebo garden area for cocktail receptions and solemnisation
- Peranakan heritage dining experience at Ellenborough Market Café
- Pool restaurant that overlooks the Singapore River
- Contemporary bar with grand floor-to-ceiling windows
- Free-form swimming pool, outdoor jacuzzi, fitness centre & spa
- Committed to daily sustainability efforts
- Sheltered walkway to Clarke Quay MRT station within 2 mins
- Close proximity to the financial district & Marina Bay / Suntec convention areas in less than 10 mins by train
- Located next to Clarke Quay's dining and entertainment hub with 60 restaurants, lifestyle and entertainment spots within 0.5km
- Concierge service with luggage storage, including sightseeing and car rental arrangement services
- Laundry & dry-cleaning services or a 24-hour self-service launderette
- Turndown & baby-sitting service available on request
- Ample parking space with a total of 161 lots

CAPACITY CHART

MEETING ROOMS	AREA (M²)	CEILING HEIGHT	COCKTAIL	CLASS ROOM	BOARD ROOM	THEATRE	U SHAPE	HOLLOW SQUARE	BANQUET & DANCEFLOOR	BANQUET	LEGEND
GROUND LEVEL											
Ballroom A & B	680	6	600	324	-	580	100	130	460	500	<div><div></div> Meeting Room or Ballroom</div> <div><div></div> Restrooms</div> <div><div></div> Elevator</div> <div><div></div> Food &amp; Beverage Outlet</div> <div><div></div> Emergency Exit</div> <div><div></div> Stairway</div> <div><div></div> Window</div> <div><div></div> Moveable Partition</div>
Ballroom A	243	6	180	96	-	156	45	66	80	160	
Ballroom B	437	6	300	162	-	250	50	90	180	260	
Rosewood A & B	98	3.6	60	45	24	65	30	36	-	60	
Rosewood A	49	3.6	20	12	12	24	12	18	-	20	
Rosewood B	49	3.6	20	12	12	24	12	18	-	20	
Sandalwood	96	3.8	50	33	30	60	24	30	-	50	
Elmwood	71	3.8	50	45	30	70	24	30	-	50	
Inkwood	72	3.5	40	27	12	60	21	30	-	40	
Oakwood	59	3.6	30	21	24	36	21	24	-	20	
Maplewood	59	4	40	21	16	30	15	18	-	30	
Boardroom	28	3.5	-	-	9	-	-	-	-	-	

GROUND LEVEL



# PARADOX

SINGAPORE

MERCHANT COURT

20 Merchant Road | Singapore 058281

T: +65 6337 2288 | F: +65 6334 0606 | [paradoxhotels.com/singapore](http://paradoxhotels.com/singapore)



ParadoxMerchantCourt