

TITANIC CITY TAKSIM

CONCEPT



TITANIC

CITY TAKSIM

TITANIC HOTELS

The beginning of the hotel management adventure of AYG Group of Companies dates back to 1993 and seed of the "TITANIC" Brand was planted with the Ship Themed "Titanic Beach Lara" Hotel that was put into service in Antalya Lara Region in 2003.

Deciding to grow and make investment in hotel management with "Titanic Beach Lara" Hotel, AYG Group decided to bring together all hotels under the roof of "TITANIC" brand and to manage the new hotels to be opened with this brand due to the success and synergy of this new brand.

TITANIC HOTELS SUB-BRANDS

AYG Group determines the sub-brands and concepts of the hotels that it manages and invest in under the roof of Titanic Hotels, according to the location and physical structures of the business.

The hotels, managed by Titanic Hotels with distinctive service concept it has created with internationally accepted standards and years of experience, are classified as follows.

PALACE HOTELS

Palace Resort

Palace City

DELUXE HOTELS

Deluxe Resort

Deluxe Golf

Deluxe City

BEACH RESORTS

BUSINESS HOTELS

PORT HOTELS

CITY HOTELS

COMFORT HOTELS

PRIMARY FEATURES OF TITANIC HOTELS

The best Location in its category,
A high level professional hotel management,
Customer satisfaction oriented and high level service concept,
First class material guarantee in all kinds of products,
High level Food and Beverage concept depending on the category,
Internationally accepted high level Hygiene Standards,
Sustainable management vision with Total Quality philosophy,
High importance attached to the guest safety and health,
High Level Environmental Awareness,
Support and participation in social projects,
Energy friendly service concept,
High level, uninterrupted and free WI-FI service.

TITANIC HOTELS' PANDEMIC MEASURES

Due to Covid-19 Epidemic which affected the whole world at the beginning of 2020, all businesses of TITANIC HOTELS have taken all their measures for this pandemic and similar situations that may occur in the future as soon as possible.

All circulars, recommendations and publications of the World Health Organization (WHO), the Ministries of Health of Republic of Turkey and Federal Republic of Germany and all other relevant public institutions, relevant sector organizations and Scientific Committees are followed moment to moment and what is necessary is done instantly.

Regarding this situation, the "SAFE TOUCH" concept was created after review of the "Hygiene and Health Procedure" that is meticulously applied in TITANIC HOTELS businesses.

All our businesses have "SAFE TOURISM" Certificates issued by international audit institutions and these certificates are updated constantly by regular audits.



TITANIC
HOTELS

ANTALYA | ISTANBUL | BODRUM | BERLIN



TITANIC

CITY TAKSIM

GENERAL INFORMATION

Opening Date: November 2008

Category: +4 (Plus) Star

Company: Gün Turizm İnşaat San. Tic. A.Ş

Season: 12 Months

Concept: City

Postal Address: Kocatepe Mahallesi Lamartin Caddesi no:45-49 Beyoğlu / İstanbul

Telephone: +90 212 238 90 90

Fax: +90 212 235 47 47

E-Mail: citytaksim@titanic.com.tr

Website: titanic.com.tr



DISTANCE AND TRANSPORTATION

Sabiha Gökçen Airport	55 km
İstanbul Airport	40 km
Taksim Square	0,5 km
Lütfi Kırdar Convention Center	0,5 km
Sultanahmet / Historical Peninsula	4 km
Transportation Facilities	VIP Transfer, Taxi, Metro, Marmaray,

* Pets are not allowed.

* Use of Skateboard, Roller Skate, Scooter, Hoverboard is not allowed in closed areas of the hotel.

* Use of drone is not allowed.

*** Titanic City Taksim has the right to make changes on the concept without conveying any information to the 2nd and 3rd persons/corporations.

Located in the city center, Titanic City Taksim offers its guests important advantages with its warm and meticulous hospitality approach and special location.

Taksim is an ideal location for business and holiday trips because it is easy to access all the unforgettable historical and cultural regions that make İstanbul what İstanbul is, entertainment options of nightlife, shopping malls hosting the world's leading luxury brands and Congress Valley, Lütfi Kırdar Convention Center and Cemal Reşit Rey Concert Hall in addition to important company headquarters from there.

Titanic City Taksim is just a few steps away from Taksim that is the most important center of the city. The hotel that is within walking distance of İstiklal Street, metro station and Nişantaşı, Şişli and Beşiktaş that are the favorite districts of the city, exceeds the expectations of guests who come to the city for both business and touristic purposes.

CONCEPT EXPLANATIONS

Our explanations regarding the CITY concept that has been carefully prepared for our "TITANIC CITY TAKSİM " Hotel in line with traditional Turkish Hospitality and the years of experience of Titanic Hotels, are submitted for your, our valued guests' information.

WELCOME AND SEND OFF

Doorman, Valet and Bellboy services	Paid Parking Service
Luggage Disinfection	Body temperature measurement at the entrances in accordance with our Safe Touch Concept and Safe Tourism Certificate
Room keys in their hygienic and special cases	Special welcoming for our disabled guests
Hygienic fast check-in and check-out, general information about the facility	

GUEST CALL CENTER

Our Guest Call Center, our unit that is responsible for fulfilling the special requests and demands of our guests 24/7, makes shares regularly for all our guests in order to enable them to make maximum use of resources of the hotel.

CREDIT CARDS ACCEPTED

Visa	MasterCard	Eurocard	American Express
------	------------	----------	------------------

SHOPPING OPPORTUNITIES

Demirören Mall 1 km	City's Nişantaşı Mall 2 km	Cevahir Mall 4 km	Zorlu Mall 5 km
Metro City Mall 6 km	Kanyon Mall 6 km	Özdilek Mall 6 km	İstinye Park 10 km

PAID SERVICES

Laundry and Dry Cleaning service	Late check-out and Early check-in	Room Service	A la Carte Foods and Beverages
Doctor Services	Wheelchair	Spa Therapy and Treatment services	Photocopy, printer service
Transfer	Valet, Parking Area	Extra Bed	Minibar

OUR HONEYMOON CONCEPT

Depending on availability of the hotel Best room in its own category	Live flower to the room
Sparkling wine, Fruit plate at the entrance of the room, Cake and Turkish dessert plate	Traditional Turkish Breakfast to the Room or in our Special Restaurant on a desired day
VIP toiletry set	20% discount on paid Ocean SPA treatments

ACCOMMODATION

ROOM TYPE EXPLANATIONS

There are a total of 202 rooms, of which 3 are suites and 2 are rooms for disabled guests in the hotel consisting of 11 floors. Furnished in art deco style and pastel tones, the rooms are designed to allow you to rest peacefully away from the city traffic.

OUR SERVICES ACCORDING TO ROOM TYPES

Room Types Features	Superior Room	Deluxe Room	Family Room	Two Connecting Rooms	Executive Room	Suit Room
Safe	x	x	x	x	x	x
Internet Connection	x	x	x	x	x	x
Telephone	x	x	x	x	x	x
LCD TV	x	x	x	x	x	x
Hair Dryer	x	x	x	x	x	x
Toiletries and Slippers	x	x	x	x	x	x
VIP Toiletry Set-Up		x			x	x
Bathrobe		x			x	x
Kettle	x	x	x	x	x	x
Tea-Coffee set up	x	x	x	x	x	x
Coffee machine					x	x
Minibar	x	x	x	x	x	x
Central System Air Conditioner	x	x	x	x	x	x
Rainfall Shower	x	x	x	x	x	
Working Table	x	x	x	x	x	x
Bathtub					x	x
Living Room						x
Kitchenette						x
Balcony					x	
Dinner table		x				x



SUPERIOR ROOM

 Area 25 m²



Max. Capacity: 3 adults



Double or Twin

- Free Wi-Fi
- Air Conditioning
- Safe
- Coffee & Tea Set-up
- Minibar

Premium amenities



Free Wi-Fi



Room Service

Room Types	Location	Features	Max. Capacity
Superior Room	Main Building 25 m ²	There are twin or French bed, armchair, bathroom, minibar, TV, satellite and music broadcast, wireless Internet connection, direct telephone, central air conditioner, safe, shower, dryer, tea and coffee set-up, carpet floor in 24 m ² of Standard Rooms in the main building. 2 of the standard rooms are designed for disabled guests.	2+2 (3 adults)



DELUXE ROOM

 Area 36 m²



Max. Capacity: 3 adults



Double

- Air Conditioning
- Safe
- Higher Floors
- Dining Table
- Coffee & Tea Set-up

Premium amenities



Dining Table



Couch

Room Types	Location	Features	Max. Capacity
Deluxe Room	Main Building 36 m ²	There are French bed, bathroom, minibar, TV, satellite and music broadcast, wireless Internet connection, direct telephone, central air conditioner, safe, shower, dryer, tea and coffee set-up, carpet floor in 36 m ² of Deluxe Rooms in the main building.	2+1



FAMILY ROOM

 Area 28 m²
 Max. Capacity: 4 adults
  2 Double

- Free Wi-Fi
- Air Conditioning
- Safe
- Coffee & Tea Set-up
- Minibar

Premium amenities

 Free Wi-Fi
  Room Service

Room Types	Location	Features	Max. Capacity
Family Room	Main Building 28 m ²	There are 2 queen beds, bathroom, minibar, TV, satellite and music broadcast, wireless Internet connection, direct telephone, central air conditioner, safe, shower, dryer, tea and coffee set-up, carpet floor in 28 m ² of Family Rooms in the main building.	3+1



TWO CONNECTING ROOMS

 Area 48 m²
 Max. Capacity: 6 adults
  Double & Twin

- Air Conditioning
- Safe
- Coffee & Tea Set-up
- Minibar
- Telephone

Premium amenities



Two Bedrooms



Connecting Rooms

Room Types	Location	Features	Max. Capacity
Two Connecting Rooms	Main Building 48 m ²	2 Standard Rooms of which each room is 24 m ² in the main building; consist of 1 exterior door and 2 room doors. Two Connecting Rooms There are twin or French bed, sitting group, bathroom, minibar, TV, satellite and music broadcast, wireless Internet connection, direct telephone, central air conditioner, safe, shower, dryer, tea and coffee set-up, carpet floor in the rooms.	4+1



EXECUTIVE ROOM

 Area 33 m²



Max. Capacity: 3 adults



Double

- Seating Area
- Air Conditioning
- Coffee Machine
- Safe
- Higher Floors

Premium amenities



Seating Area



Balcony

Room Types	Location	Features	Max. Capacity
Executive Room	Main Building 33 m ²	There are French bed, bathroom, minibar, TV, satellite and music broadcast, wireless Internet connection, direct telephone, central air conditioner, safe, shower, dryer, tea and coffee set-up, carpet floor and balcony in 29 m ² of Executive Rooms in the main building, 11th floor. There are table and chairs on the balcony to enjoy Istanbul.	2+1



SUITE

 Area 55 m²
 Max. Capacity: 3 adults
  Double

- Kitchenette
- Air Conditioning
- Coffee Machine
- Safe
- Coffee & Tea Set-up

Premium amenities



Kitchenette



Living Room

Room Types	Location	Features	Max. Capacity
Suite Room	Main Building 55 m ²	There are French bed, bathroom, minibar, TV, satellite and music broadcast, bathtub bathroom, wireless Internet connection, direct telephone, central air conditioner, safe, shower, dryer, tea and coffee set-up, carpet floor, sitting group, kitchen, microwave oven in 55 m ² of Suite Rooms in the main building.	3+1

FOOD AND BEVERAGE

CITY CONCEPT FOOD AND BEVERAGE GENERAL INFORMATION

High hygiene standards at all services	Varieties produced from daily and fresh products at all units	Branded and high quality domestic and imported products	24 hours room service	Lobby Restaurant with its rich menus
Snack service with alcoholic beverage	Cookies with hot beverages in the Lobby	Minibar with rich content in the rooms	Complimentary in the Room Tea & Coffee	Special food service for our child guests if requested
Surprise Treats for our regular guests and Club members	Birthday and honeymoon treats			

ALESTA BREAKFAST

Welcoming at the door	Sitting opportunity in wide and spacious indoor/outdoor areas	Service from open buffets in rich, quality and hygienic conditions	Freshly squeezed orange juice at breakfast
Tea & Coffee Service to the Table	Bakery products from the bakery	Hot food prepared a la minute	Fresh cheese and deli cutting buffet
Show Buffet	Rich Diet Buffet	Varieties produced from daily and fresh products at all units	High hygiene standards at all services
A la minute hot egg service (scrambled eggs, boiled eggs)			

TITANIC COFFEE

Opportunity to choose from Snack Menus with wide varieties	Service to the table	Snack, food service with alcoholic beverage	With hot beverages, Cookies
Quality local and imported alcoholic and non-alcoholic beverages	High hygiene standards at all services		

PATISSERIE

Wide patisserie showcase with a wide variety	Daily fresh products with quality ingredients	Self Service and service to the table	Hot, cold quality and branded nonalcoholic beverages
--	---	---------------------------------------	--

A'LA CARTE RESTAURANTS

High hygiene standards at all services	Welcoming at the door and escorting to the table	Ambience and the decoration suitable for the theme	Selecting from the A la Carte menu
Wide range of premium alcoholic and non-alcoholic beverages	Menu containing wide range of domestic and foreign wines		

SERVICE HOURS OF THE FOOD AND BEVERAGE UNITS

Restaurant	Service	Explanation	Opening - Closing	Service Type
Alesta Restaurant	Open Buffet Breakfast	Rich breakfast varieties of delicious Turkish and International cuisine are served.	07:00 - 10:30 (Weekdays) 07:00 - 10:30 (Weekend)	Paid
Alesta Restaurant	Open Buffet or Set Menu Lunch	Rich varieties of delicious international cuisine are served.	12:00 - 14:00	Paid
Alesta Restaurant	Open Buffet or Set Menu Dinner	Rich varieties of delicious international cuisine are served.	19:00 - 21:00	Paid
Titanic Coffee	A la Carte	Rich varieties of delicious international cuisine are served.	07:00 – 22:30	Paid
Room Service	A la Carte	Foods and beverages selected from the Room Service menu.	24 hours	Paid
Titanic Coffee Bar	A la Carte	Wide range of premium local and foreign alcoholic and non-alcoholic beverages are served.	07:00 – 22:00	Paid

OCEAN SPA

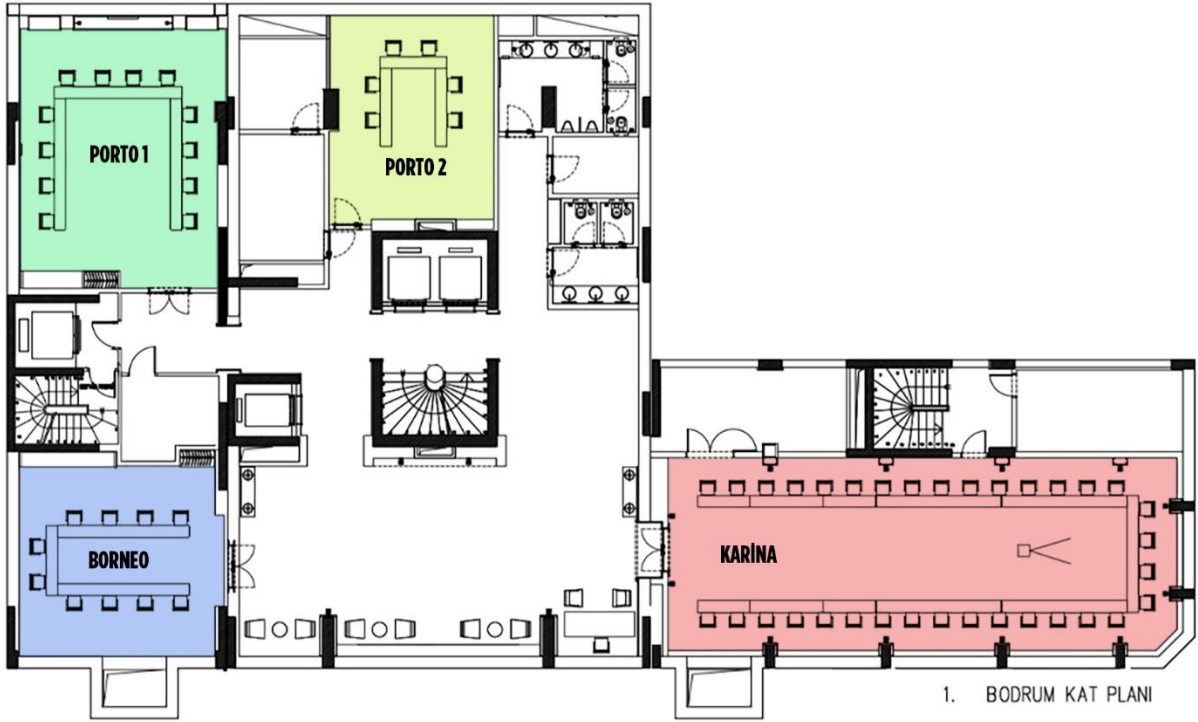
Free	Fitness Center	Turkish Bath	Steam room
	Sauna	Swimming Pool	Jacuzzi
	Relaxation Room	Shock Bath	
Paid	Massages and Turkish Bath Services	Skin and Body Care	Private Swimming Lessons
*Bonnet must be worn while using the pool.			

POOLS

Pool	Open Area	Closed Area	Heated	Depth	Area m ²
Indoor Pool		X	X	140 cm	40 m ²
*Serving Hours 10:00-21:00 *Bonnet must be worn while using the pool.					

MEETING HALLS

There are 4 meeting halls in the hotel. There are a computer and printer in the business center. Free high-speed wireless internet, flipchart, digital projector, curtain, microphone and sound system are offered in the meeting halls.



Halls	Area (m2)	Width (m)	Length (m)	Height (m)	Banquet	Theater	Classroom	Cocktail
Borneo	42	7.4	12,2	2.7	18	20	18	20
Karina	120	6	16,5	2.7	63	120	80	100
Porto I	58	7	8,3	2.7	32	36	36	50
Porto II	38	5,5	6,7	2.7	16	18	18	20



● BERLIN

TITANIC

HOTELS

● ISTANBUL

BODRUM ●

● ANTALYA