



EASTIN GRAND HOTEL PHAYATHAI


Meeting Package

Service and Value Redefined



 +662 483 2899

 ceco@eastingrandphayathai.com

 18 Phaya Thai Rd, Thung Phaya Thai,
Ratchathewi, Bangkok 10400



The Auditorium & Chef Lab

Facilities and Price List

ROOM RENTAL (COFFEE & TEA)

- Full-day room rental - Baht 50,000 net
 - Welcome refreshments with coffee and tea selection
 - Meeting room usage from 08:00-17:00 hrs.
- Half day room rental - Baht 30,000 net
 - Welcome refreshments with coffee and tea selection
 - Meeting room usage from 08:00-12:00 hrs. or 13:00-17:00 hrs.

FULL-DAY MEETING PACKAGE - BAHT 1,700 NET/ PERSON (2 COFFEE BREAKS + LUNCH)

- Meeting room usage from 08:00-17:00 hrs.
- Welcome refreshments with coffee and tea selection
- Morning and afternoon break with a choice of coffee break items including an assorted fresh fruit, and herbal drinks
- Join the International Buffet at The Market@5 restaurant (opens on Monday-Saturday)
Additional Charge Baht 200 net per person will be charged for
 - Private International Buffet (min. 50 guests)
 - Thai or Western set lunch in a private function room (min. 20 guests)

HALF-DAY MEETING PACKAGE - BAHT 1,800 NET/ PERSON (1 COFFEE BREAK + LUNCH)

- Meeting room usage from 08:00-12:00 hrs. or 13:00-17:00 hrs.
- Welcome refreshments with coffee and tea selection
- Morning and afternoon break with a choice of coffee break items including an assorted fresh fruit, and herbal drinks
- Join the International Buffet at The Market@5 restaurant (opens on Monday-Saturday)
Additional Charge Baht 200 net per person will be charged for
 - Private International Buffet (min. 50 guests)
 - Thai or Western set lunch in a private function room (min. 20 guests)

COFFEE BREAK - BAHT 1,200 NET/ PERSON (1 COFFEE BREAK)

- Meeting room usage from 08:00-12:00 hrs. or 13:00-17:00 hrs.
- Welcome refreshments with coffee and tea selection
- Morning and afternoon break with a choice of coffee break items including an assorted fresh fruit, and herbal drinks

ALL PACKAGES ARE INCLUSIVE OF:

Materials:

- Registration table
- Meeting room set up
- Flipcharts and markers
- Notepads and pencils
- Drinking water
- Digital signage

Audio Visual:

- 1 LCD projector
- Motorized screen
- Basic audio-visual equipment
- Wi-Fi internet access

* All prices are based on a minimum of 30 guests and are inclusive of 10% service charge & applicable government tax.



EASTIN
GRAND HOTEL
PHAYATHAI

The Auditorium & Chef Lab

Facilities and Price List

ROOM RENTAL (COFFEE & TEA)

- Full-day room rental - Baht 50,000 net
 - Welcome refreshments with coffee and tea selection
 - Meeting room usage from 08:00-17:00 hrs.
- Half day room rental - Baht 30,000 net
 - Welcome refreshments with coffee and tea selection
 - Meeting room usage from 08:00-12:00 hrs. or 13:00-17:00 hrs.

FULL-DAY MEETING PACKAGE - BAHT 1,700 NET/ PERSON (2 COFFEE BREAKS + LUNCH)

- Package price requires a minimum of 50 guests.
- Auditorium Room usage from 08:00 - 17:00 hrs.
- Free-flow coffee & tea throughout the event.
- Morning & afternoon coffee breaks with 3 snacks, fresh fruit and cookies.
- International buffet lunch at The Market@5 (Mon-Sat, 12:00 - 14:30 hrs).
- Additional Charge Baht 200 net per person will be charged for:
 - Private international buffet (min. 50 guests).
 - Thai or Western set lunch in a private function room (min. 20 guests).

HALF-DAY MEETING PACKAGE - BAHT 1,500 NET/ PERSON (1 COFFEE BREAK + LUNCH)

- Meeting room usage: 08:00-12:00 hrs. or 13:00-17:00 hrs.
- Welcome refreshments with coffee and a selection of teas.
- Morning or afternoon coffee break with 3 snacks, fresh fruit and cookies.
- International buffet lunch at The Market@5 (Monday-Saturday).
- Additional charge of THB 200 net per person for:
 - Private international buffet (min. 50 guests).
 - Thai or Western set lunch in a private function room (min. 20 guests).

COFFEE BREAK - BAHT 1,000 NET/ PERSON (1 COFFEE BREAK)

- Package price based on a minimum of 50 guests.
- Auditorium Room usage: 08:00-12:00 hrs. or 13:00-17:00 hrs.
- Free-flow coffee & tea served throughout the event.
- Morning or afternoon coffee break with 3 snack items, seasonal fresh fruits and cookies.

ALL PACKAGES ARE INCLUSIVE OF:

Materials:

- Registration table
- Meeting room set up
- Flipcharts and markers
- Notepads and pencils
- Drinking water
- Digital signage

Audio Visual:

- 1 LCD projector
- Motorized screen
- Basic audio-visual equipment
- Wi-Fi internet access

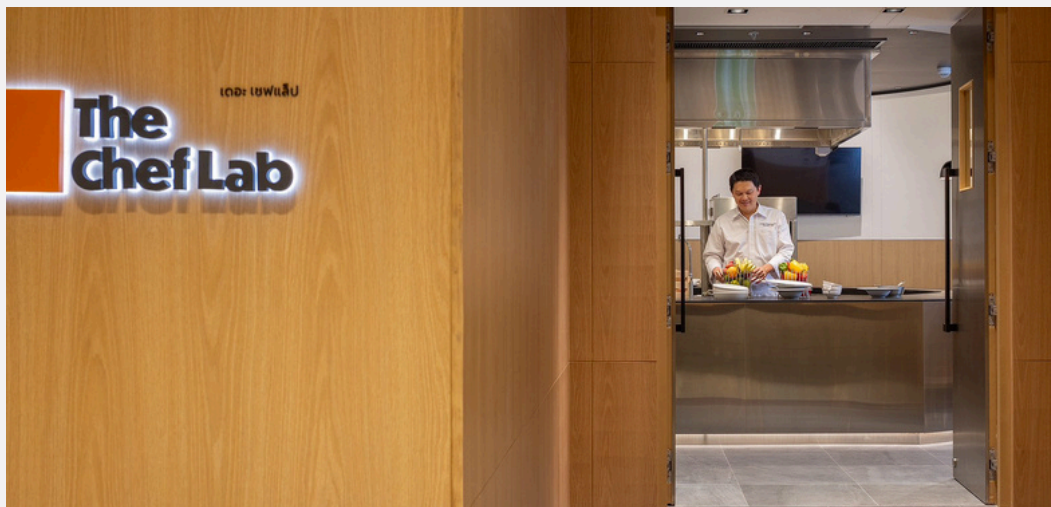


EASTIN
GRAND HOTEL
PHAYATHAI

* All prices are based on a minimum of 30 guests and are inclusive of 10% service charge & applicable government tax.

Function Rooms (3rd Floor)

Function Room	m2	Theatre
The Auditorium	205	98
Chef Lab	134	12



Meeting Rooms (3rd Floor)



Facilities and Price List

FULL-DAY MEETING PACKAGE - BAHT 2,000 NET/ PERSON (2 COFFEE BREAKS + LUNCH)

- Meeting room usage from 08:00-17:00 hrs.
- Free-flow coffee and tea selection throughout the event
- Morning and afternoon break with a choice of coffee break items including assorted fresh fruit, and herbal drinks
- Join the International Buffet at The Market@5 restaurant (opens on Monday-Saturday)
Additional Charge Baht 200 net per person will be charged for
 - Private International Buffet (min. 50 guests)
 - Thai or Western set lunch in a private function room (min. 20 guests)

HALF-DAY MEETING PACKAGE - BAHT 1,800 NET/ PERSON (1 COFFEE BREAK + LUNCH)

- Meeting room usage from 08:00-12:00 hrs. or 13:00-17:00 hrs.
- Free-flow coffee and tea selection throughout the event
- Morning or afternoon break with a choice of coffee break items including assorted fresh fruit, and herbal drinks
- Join the International Buffet at The Market@5 restaurant (opens on Monday-Saturday)
Additional Charge Baht 200 net per person will be charged for
 - Private International Buffet (min. 50 guests)
 - Thai or Western set lunch in a private function room (min. 20 guests)

COFFEE BREAK - BAHT 1,200 NET/ PERSON (1 COFFEE BREAK)

- Meeting room usage from 08:00-12:00 hrs. or 13:00-17:00 hrs.
- Free-flow coffee and tea selection throughout the event
- Morning or afternoon break with a choice of coffee break items including assorted fresh fruit, and herbal drinks
- Room rental fee is applicable, subject to room capacity and number of participants

ALL PACKAGES ARE INCLUSIVE OF:

Materials:

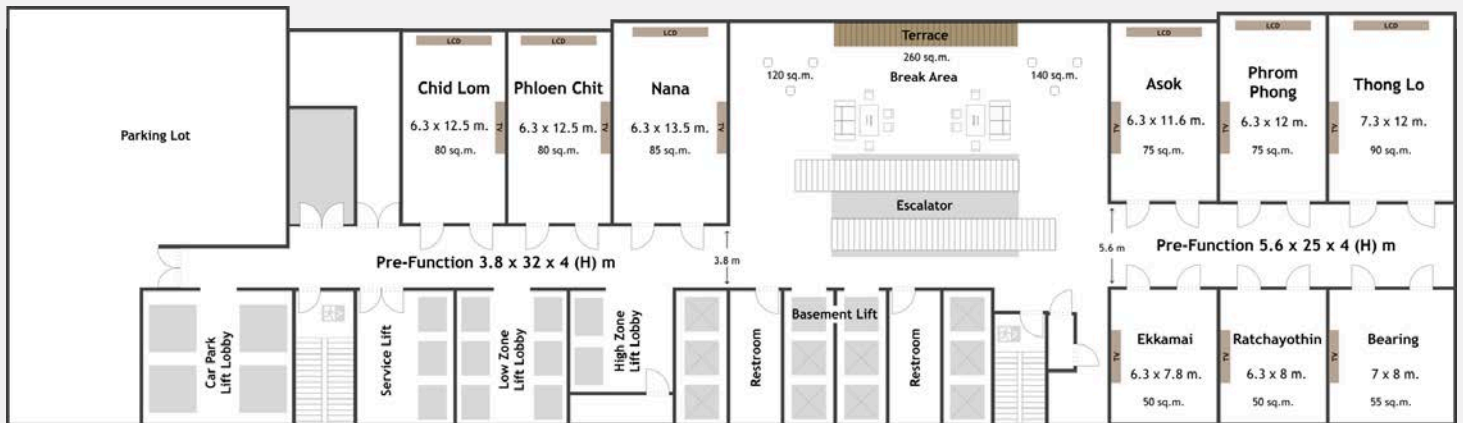
- Registration table
- Meeting room set up
- Flipcharts and markers
- Notepads and pencils
- Drinking water and candies
- Backdrop lettering & digital signage

Audio Visual:

- 1 LCD projector
- Motorized screen
- Basic audio-visual equipment
- Wi-Fi internet access

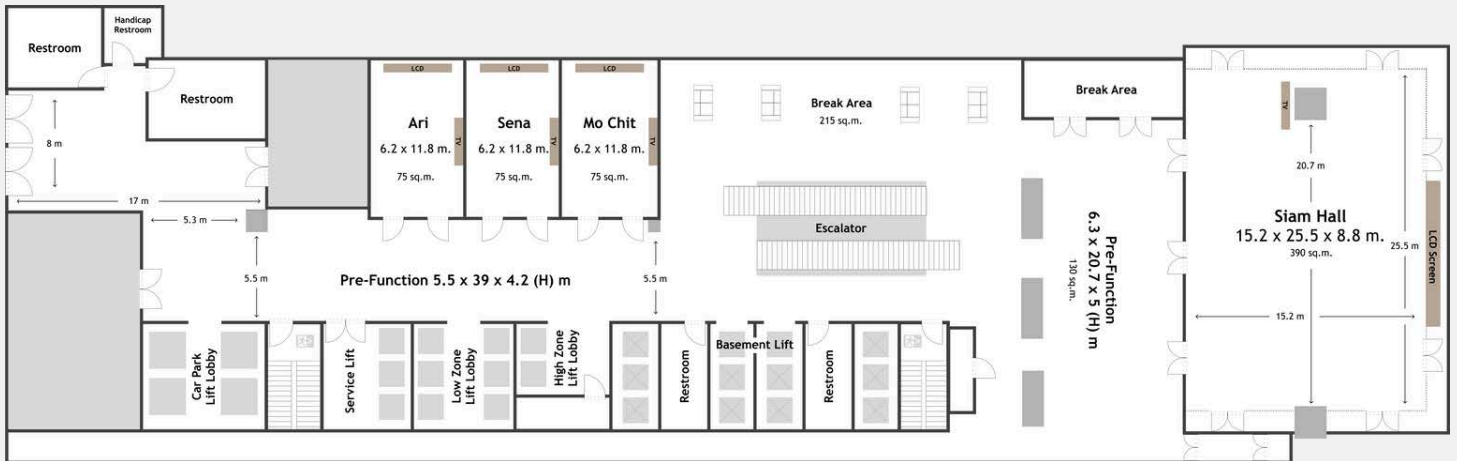
Function Rooms (4th Floor)

Function Room	m2	W	L	H	Classroom	Theatre	I	U	Hollow	Banquet	Reception
		(meters)					Shape				
Chid Lom	80	6.3	12.5	3.8	42	54	24	27	42	50	60
Phloen Chit	80	6.3	12.5	3.8	42	54	24	27	42	50	60
Nana	85	6.3	12.5	3.8	45	63	24	27	42	50	80
Pre-Function	120	3.8	32.0	4.0	-	-	-	-	-	-	-
Ekkamai	50	6.3	7.8	3.8	-	-	12	-	-	-	-
Ratchayothin	50	6.3	8.0	3.8	-	-	12	-	-	-	-
Bearing	55	7.0	8.0	3.8	-	-	-	-	12	-	-
Asok	75	6.3	12.0	3.8	36	54	24	27	42	50	60
Phrom Phong	75	6.3	11.6	3.8	36	54	24	27	42	50	60
Thong Lo	90	7.3	12.0	3.8	42	54	24	27	42	60	90
Pre-Function	140	5.6	25.0	4.0	-	-	-	-	-	-	-



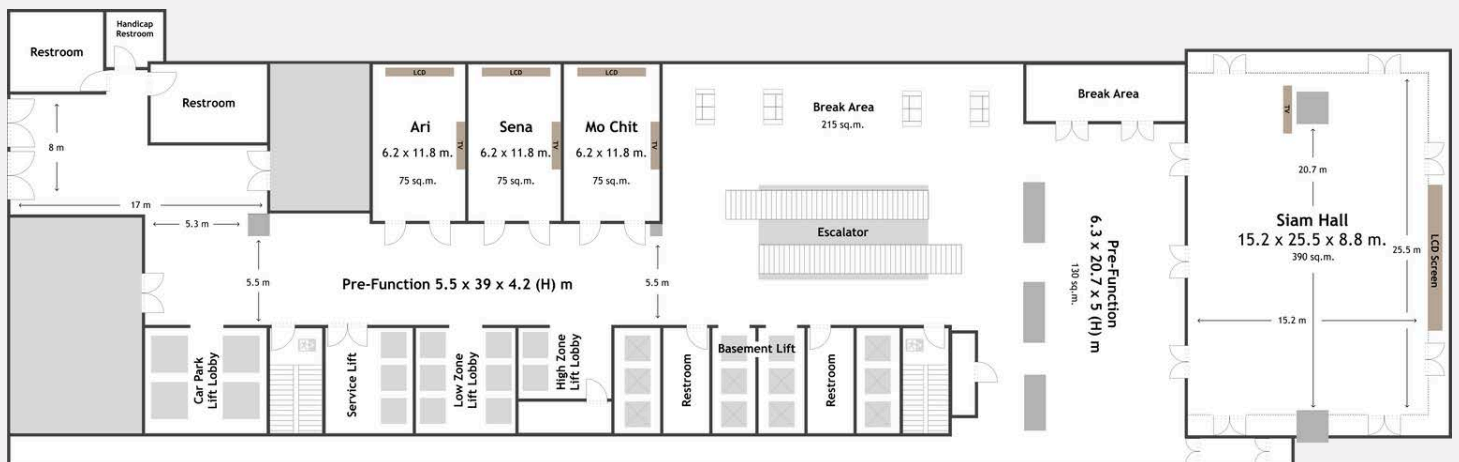
Function Room (6th Floor)

Function Room	m2	W	L	H	Classroom	Theatre	I	U	Hollow	Banquet	Reception
		(meters)					Shape				
Siam Hall	390	15.2	25.5	8.8	135	210	36	51	84	180	250
Pre-Function	130	6.3	20.7	5.0	-	-	-	-	-	-	-



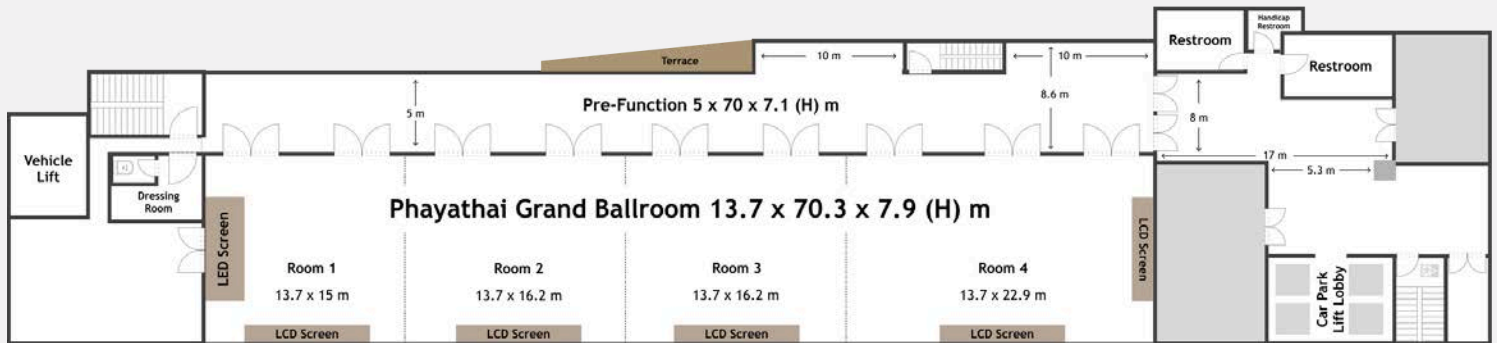
Function Room (6th Floor)

Function Room	m2	W	L	H	Theatre	Banquet	Reception
		(meters)					
Ari	75	6.2	11.8	4.2	54	50	60
Sena	75	6.2	11.8	4.2	54	50	60
Mo Chit	75	6.2	11.8	4.2	54	50	60
Pre-Function	215	5.5	39.0	4.2	-	-	-

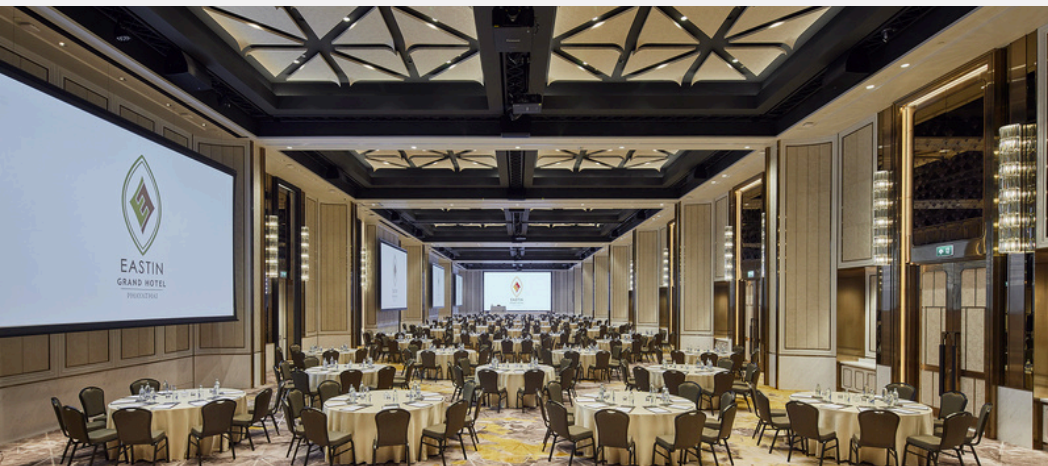


Phayathai Grand Ballroom (6th Floor)

Function Room	m2	W	L	H	Classroom	Theatre	I	U	Hollow	Banquet	Reception
		(meters)					Shape				
Phayathai Grand Ballroom	960	13.7	70.3	7.9	648	1,020	-	-	-	800	1,000
Phayathai 1	205	13.7	15	7.9	90	120	24	48	72	80	130
Phayathai 2	221	13.7	16.2	7.9	72	120	-	60	66	70	140
Phayathai 3	221	13.7	16.2	7.9	72	120	-	60	66	70	140
Phayathai 4	313	13.7	22.9	7.9	180	220	66	72	90	200	240
Phayathai 1-2	427	13.7	31.2	7.9	288	340	90	102	96	320	270
Phayathai 1-3	649	13.7	47.4	7.9	468	600	144	156	150	520	420
Phayathai 2-4	443	13.7	32.4	7.9	486	760	-	186	168	640	240
Phayathai 3-4	535	13.7	39.1	7.9	306	500	96	132	120	400	360
Pre-Function	350	5	70	7.1	-	-	-	-	-	-	-

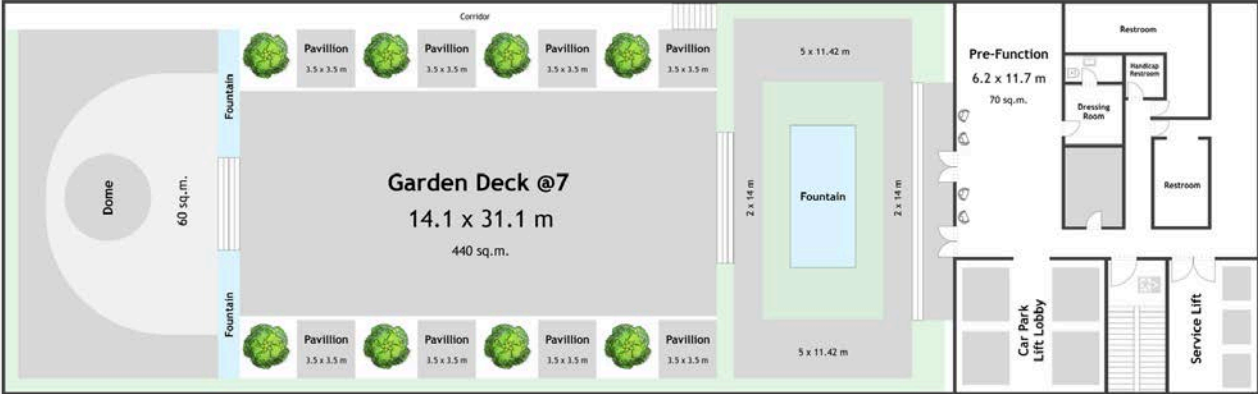


Phayathai Grand Ballroom (6th Floor)



Garden Deck (7th Floor)

Function Room	m2	W	L	H	Theatre	Banquet	Reception
		(meters)					
Garden Deck	440	14.1	31.1	-	300	270	300
Pre-Function	75	11.7	6.2	4.5	50	-	-



Facilities and Price List

FULL-DAY MEETING PACKAGE - BAHT 2,000 NET/ PERSON (2 COFFEE BREAKS + LUNCH)

- Meeting room usage from 08:00-17:00 hrs.
- Free-flow coffee and tea selection throughout the event
- Morning and afternoon break with a choice of coffee break items including assorted fresh fruit, and herbal drinks
- Join the International Buffet at The Market@5 restaurant (opens on Monday-Saturday)
Additional Charge Baht 200 net per person will be charged for
 - Private International Buffet (min. 50 guests)
 - Thai or Western set lunch in a private function room (min. 20 guests)

HALF-DAY MEETING PACKAGE - BAHT 1,800 NET/ PERSON (1 COFFEE BREAK + LUNCH)

- Meeting room usage from 08:00-12:00 hrs. or 13:00-17:00 hrs.
- Free-flow coffee and tea selection throughout the event
- Morning or afternoon break with a choice of coffee break items including assorted fresh fruit, and herbal drinks
- Join the International Buffet at The Market@5 restaurant (opens on Monday-Saturday)
Additional Charge Baht 200 net per person will be charged for
 - Private International Buffet (min. 50 guests)
 - Thai or Western set lunch in a private function room (min. 20 guests)

COFFEE BREAK - BAHT 1,200 NET/ PERSON (1 COFFEE BREAK)

- Meeting room usage from 08:00-12:00 hrs. or 13:00-17:00 hrs.
- Free-flow coffee and tea selection throughout the event
- Morning or afternoon break with a choice of coffee break items including assorted fresh fruit, and herbal drinks
- Room rental fee is applicable, subject to room capacity and number of participants

ALL PACKAGES ARE INCLUSIVE OF:

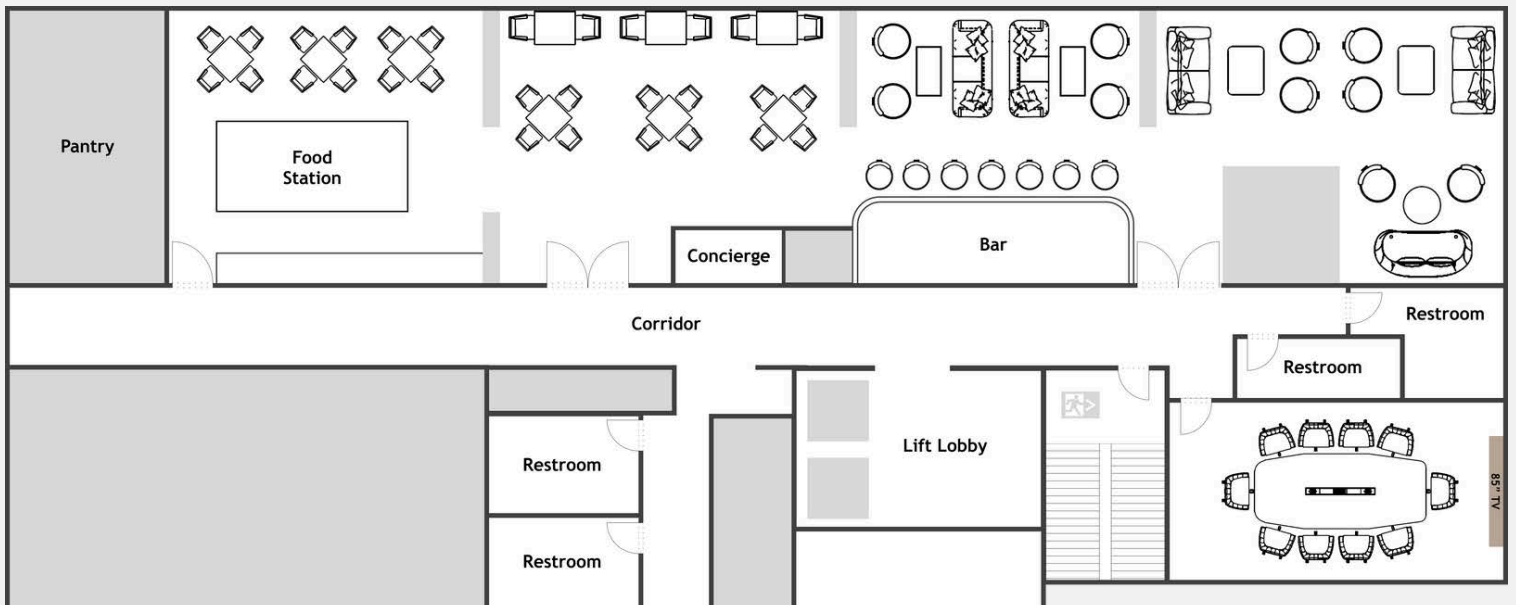
Materials:

- Registration table
- Meeting room set up
- Flipcharts and markers
- Notepads and pencils
- Drinking water and candies
- Backdrop lettering & digital signage

Audio Visual:

- 1 LCD projector
- Motorized screen
- Basic audio-visual equipment
- Wi-Fi internet access

Sky Lounge at 38 (38th Floor)





THE MARKET @5

The Market@5 is inspired by street food style food trucks and features an eclectic choice of international cuisine focusing on the classic dishes of Thailand, Japan, The Middle East, India, Mexico and European fare including Italian and Scandinavian cuisine. Throughout the entire day, market-style live stations produce simple yet superlative quality food to delight and entertain diners, all complemented by lavish beverage stations with an unsurpassed open wine selection.

Opening hours: 06.00-22.00



TRATTORIA 22

In a perfect setting beside the pool up on the 22nd floor, discover Mediterranean cuisine with a modern twist at Trattoria@22. Showcasing seasonal dishes with a menu guided by exceptional ingredients and the finest produce, enjoy the best of the Mediterranean in a stylish setting with an inviting atmosphere.

Opening hours: 12.00-23.00

Contact



Eastin Grand Hotel Phayathai

18 Phaya Thai Road, Thung Phaya Thai,
Kwang Ratchathewi, Khet Ratchathewi,
Bangkok 10400

Tel: +662 483 2899 Ext. 7315

Fax: +662 483 2886

For more information, please contact team at
ceco@eastingrandphayathai.com
www.eastingrandphayathai.com



Google Map