



THE MET HOTEL
Leeds

MEETINGS AND EVENTS



Welcome to The Met Hotel, Leeds

Welcome to The Met Hotel – the perfect base from which to explore and enjoy the best that Leeds has to offer. Whether you are here on business, hosting an event, or staying with us on leisure, my team and I will ensure your visit is pleasurable and memorable.

This brochure will give you an overview of the various spaces and facilities we have on offer for board meetings, events, private parties, conferences and weddings as well as our accommodation and dining offering.

The meetings & events team at The Met will work with you from the initial enquiry through to the finishing touches. To find out more, leaf through this brochure or call the team on +44 113 2450841.



Mike Liddle
General Manager



An iconic hotel in the heart of Leeds

Designed by local architects Chorley & Connon and renowned for its Victorian terracotta facade and stone cupola, The Met Hotel is still a much-loved landmark in Leeds' cityscape, blending its original design with contemporary interiors to create a 4-star city centre retreat.

Perfectly suited for weddings, meetings, and conferences, The Met Hotel is home to 15 flexible modern event spaces ideal for any occasion.

Just minutes from the train station and close to the city's prestigious shopping quarter, bars and restaurants, The Met Hotel is ideally located for city breaks, business trips and events.

We offer a warm and unstuffy place to host your meetings and events, where you can focus on the bigger picture and leave the finer details to us.

The Met Suite

The stunning architecture of The Met Suite, with its vaulted ceiling, grand columns and plaster friezes adorning the walls makes this the perfect room to make a statement and wow your guests.

Ideal for large gala events, conferences, parties and of course, beautiful weddings.

AT A GLANCE

Area: 239 sqm

Banquet: 220

Reception / Wedding: 200

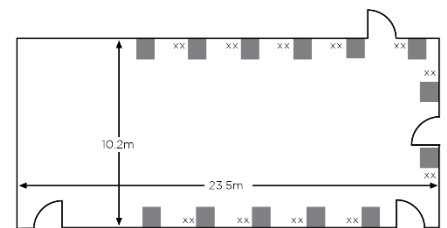
Dinner Dance: 150

Theatre: 250

Cabaret: 150

Classroom: 140

Boardroom: 50



Met 1

Met 1 boasts beautiful Victorian plasterwork decorating the high ceilings and natural daylight pouring in, making it a versatile room for both intimate parties and events as well as meetings.

AT A GLANCE

Area: 119 sqm

Reception / Wedding: 100

Dinner Dance: 80

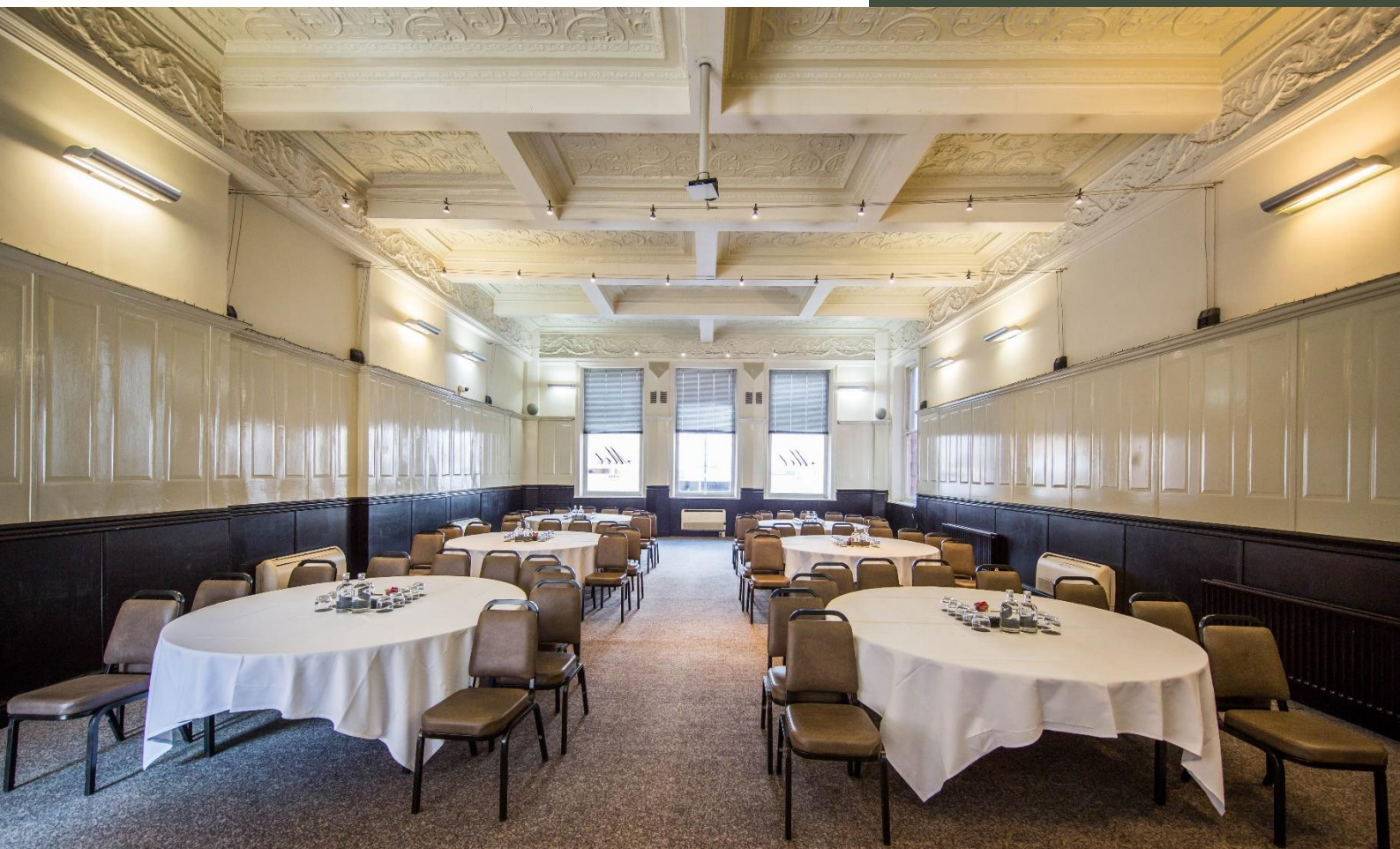
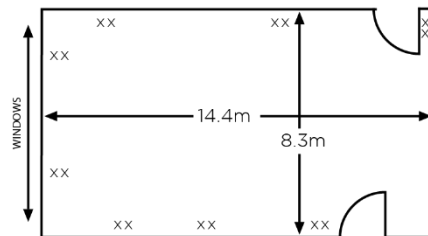
Banquet: 100

Theatre: 150

Cabaret: 80

Classroom: 60

Boardroom: 40



Met 2

With its dual-aspect tall windows the light pours into Met 2 and creates a spacious and airy feel. This room is also licenced for Wedding ceremonies where the neutral décor makes it a blank slate for different themes.

AT A GLANCE

Area: 63 sqm

Reception: 70

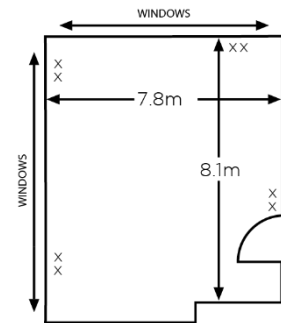
Dinner Dance / Wedding: 40

Theatre: 60

Cabaret: 40

Classroom: 26

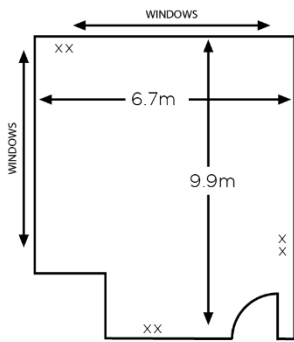
Boardroom: 30



Met 3, 5 & 6

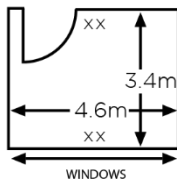
MET 3

Area: 58 sqm
Theatre: 45
Cabaret: 32
Classroom: 20
Boardroom: 26
U-Shape: 20
Reception: 40



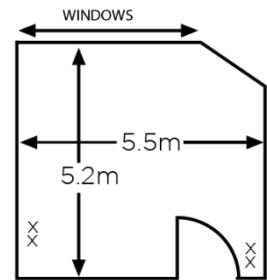
MET 5

Area: 15 sqm
Theatre: 12
Boardroom: 5



MET 6

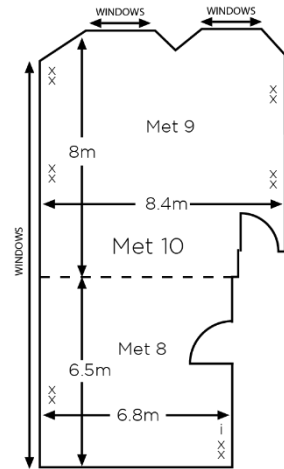
Area: 28 sqm
Theatre: 24
Classroom: 10
Boardroom: 12
U-shape: 8



Met 10 (8 & 9)

Our Met 8 & 9 Suites can be hired as separate rooms, or as one larger room, Met 10, when the partition is removed. With plenty of natural sunlight, this room can be used flexibly for a variety of meetings and events.

MET 10
Area: 108 sqm
Theatre: 90
Cabaret: 64
Classroom: 50
Boardroom: 30
U-Shape: 28

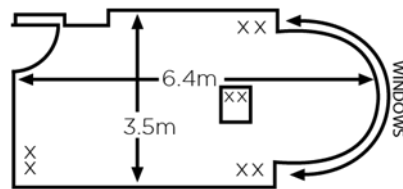


Barbara Hepworth was a renowned British sculptor, known for her abstract and organic forms in wood, stone, and bronze.

Our Barbara Hepworth room boasts natural daylight pouring in, making it a versatile room for both intimate parties and events as well as meetings.

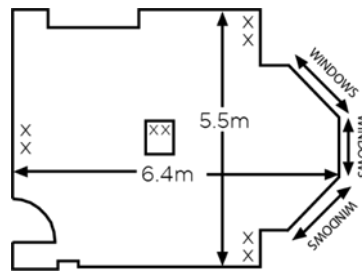
Barbara Hepworth

Area: 24 sqm
Boardroom: 12



Judi Dench

Dame Judi Dench, renowned for her versatile and iconic performances in both film and theatre, inspires the ambiance of our sophisticated Judi Dench Room—a perfect venue for meetings and gatherings. Enhanced by natural light and tasteful decor, it offers a beautifully curated space for collaborative moments.



Area: 33 sqm
Boardroom: 14

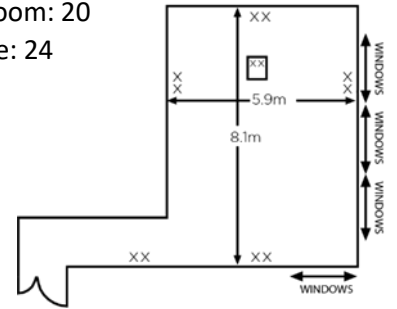


Betty Boothroyd

Betty Boothroyd is famous for being the first woman to serve as the Speaker of the House of Commons in the United Kingdom.

Our Betty Boothroyd room offers ample space with an adaptable layout, creating the perfect backdrop for any event.

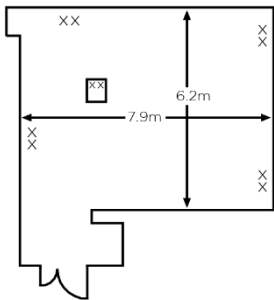
Area: 57 sqm
Theatre: 40
Cabaret: 32
Classroom: 24
Boardroom: 20
U-shape: 24



Bronte Sisters

The Bronte sisters were a remarkable trio of 19th-century British novelists whose literary contributions continue to captivate readers to this day.

Our Bronte Sisters Room is perfect for inspiring and productive meetings with a versatile space that can be changed to suit your needs.



- Area: 54 sqm
- Theatre: 40
- Cabaret: 32
- Classroom: 22
- Boardroom: 20
- U-shape: 24



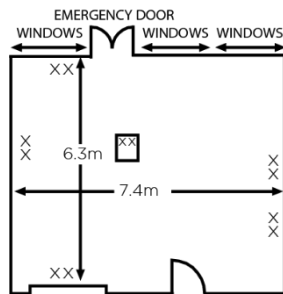
Brian Boffey

Dr. Brian Boffey is the mastermind behind Jelly Tots and a key contributor to crafting food for astronauts during historic Moon missions.

Reflecting his creative spirit, this room is beautifully decorated with plenty of space for meetings, dinners and more!



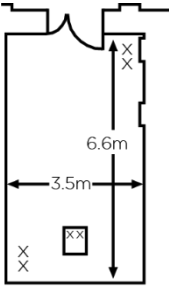
- Area: 47 sqm
- Theatre: 40
- Cabaret: 32
- Classroom: 24
- Boardroom: 18
- U-shape: 20



Helen Fielding

Helen Fielding is a renowned British author best known for her creation of the beloved character Bridget Jones.

Our Helen Fielding room offers a warm and cosy atmosphere that is perfect for intimate and engaging meetings.

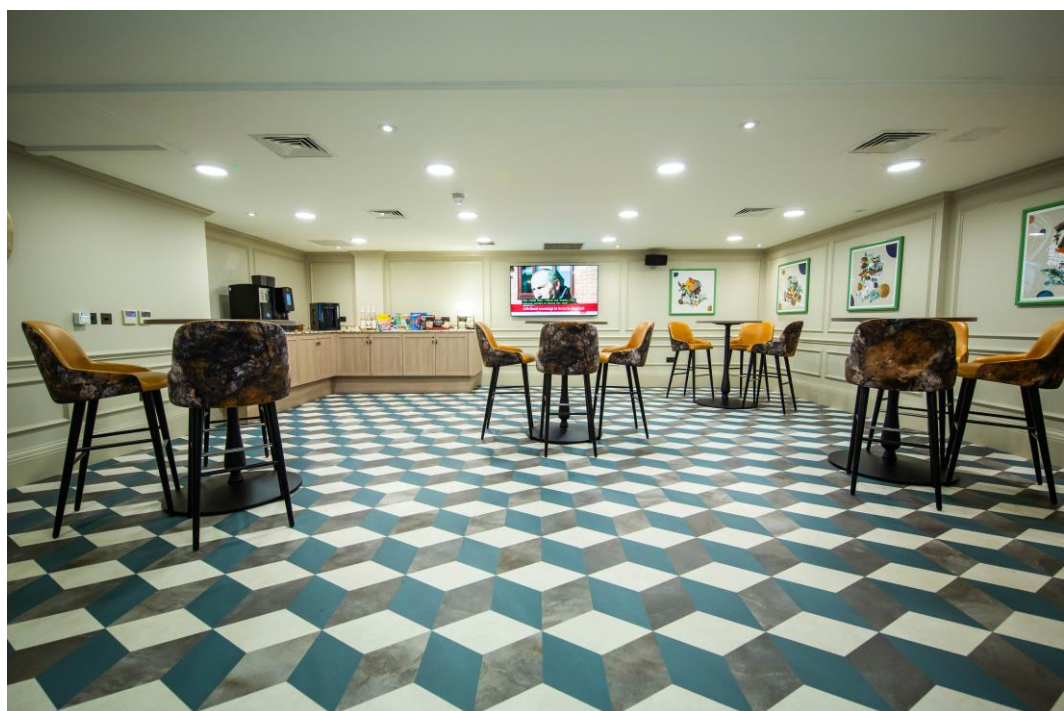


Area: 25 sqm
Boardroom: 12



Conference break-out facilities

When booking our newly themed rooms (Barbara Hepworth, Judi Dench, Betty Boothroyd, Bronte Sisters, Brian Boffey and Helen Fielding), your delegates can unwind and indulge in our breakout facilities, where we offer a continuous supply of delicious lunches and snacks throughout the day.



Weddings at The Met

The Met Hotel offers contemporary and modern décor but keeps the character of this beautiful, traditional Grade II listed building.

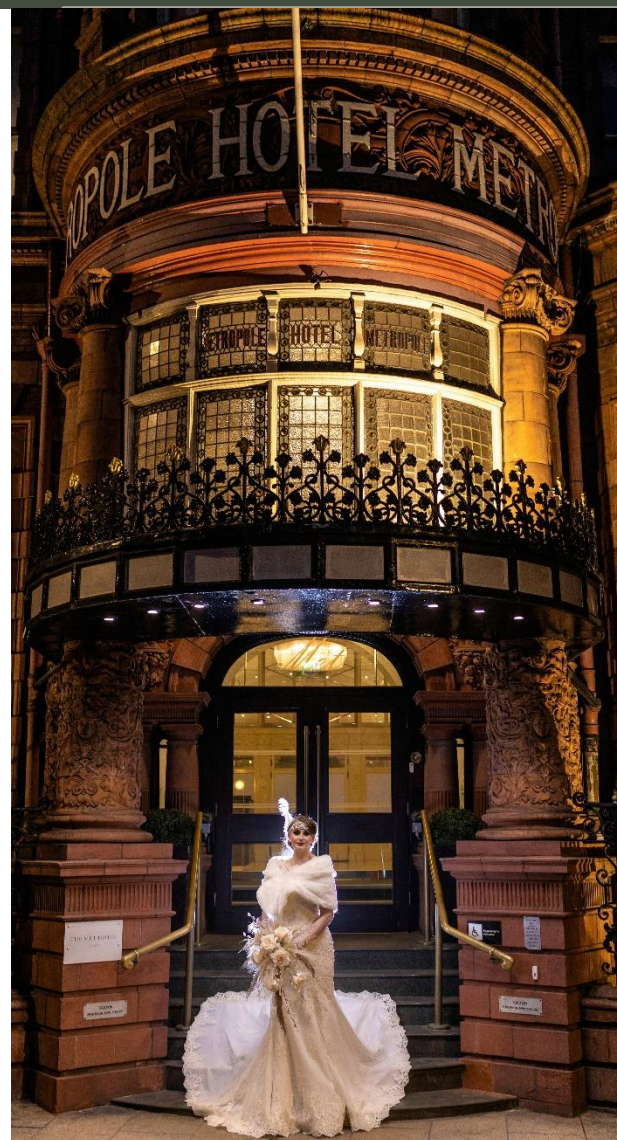
Providing a beautiful venue in the heart of Leeds with a range of function rooms available for your ceremony, wedding breakfast and celebration we can host your wedding, civil ceremony or vow-renewal.

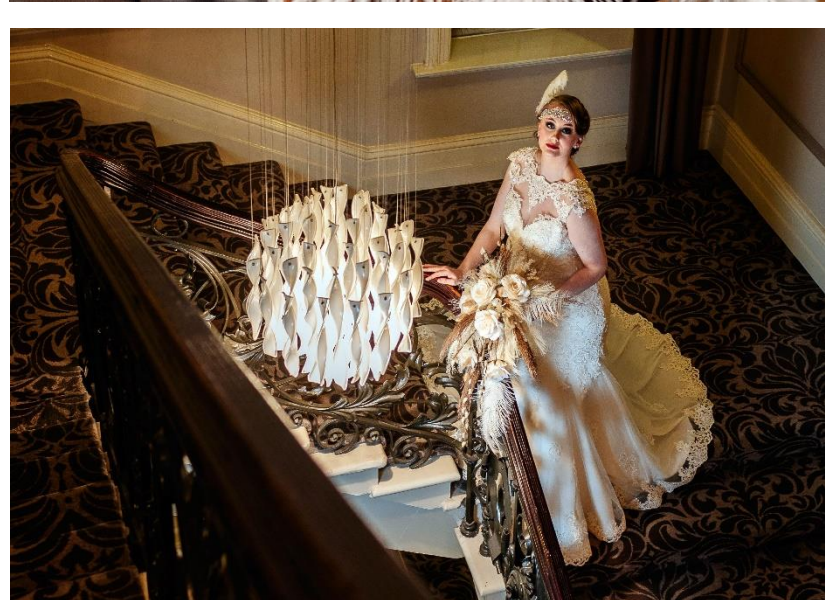
Our friendly and professional team will ensure your wedding day exceeds every expectation and our Chef will work with you to create the perfect menu for your big day.

WEDDING CEREMONY ROOMS:

Met Suite can accommodate up to 200 guests - £500 to hire.

Met 2 can accommodate up to 40 guests - £250 to hire





Metropole Wedding Package

The Metropole package includes:

- A red carpet welcome
- A dedicated wedding coordinator
- A dedicated events manager on the day
- Exclusive use of your chosen wedding banqueting suite - the room hire for your wedding breakfast is included
- Silver cake stand to suit your cake & cake knife
- Reception drinks for your guests on arrival
- Three course wedding breakfast with coffee
- Two glasses of house wine with the wedding breakfast
- A sparkling toast
- Late night munchies for all guests
- DJ to play from 7.30pm –Midnight
- Superior room for the Bride and Groom on your wedding night
- Complimentary dinner for two on your first wedding anniversary (subjected to availability)
- Preferential room rates for wedding guests

Package based on 50 guests for the day and 100 guests for the evening:

£4,999 (January – April, October – December)

£5,899 (May – September)

(Additional guests will be charged at an extra per head cost – please request more information from our Team)



Venue Hire without catering

The Met Suite can be hired without catering allowing you to use external caterers for your event.

- A red carpet welcome
- Hire of banqueting suite
- Exclusive use of the banqueting suite's private kitchen
- Private bar facilities with 2 dedicated drinks service staff
- Dedicated event coordinator
- Tables and chairs
- White tablecloths
- Cutlery, crockery and glassware
- 1 staff member per 20 guests (additional staff at £10 p/h)
- Dance floor
- Red carpet welcome
- Corkage for soft drinks
- Complimentary upgraded bedroom for the Organiser
- Preferential rates for those looking for an overnight stay

Package based on 200 guests: £4,500

*Corkage fees apply:

£10 per bottle of wine

£15 per bottle or sparkling wine or prosecco

£20 per bottle of Champagne

£2.50 per bottle of beer/cider

No charge for soft drinks.

Spirits, cocktails or similar are not covered within corkage will need to be purchased through the bar.



Sample Wedding Menu 1

WEDDING MENU - £35.95 per person

STARTERS

Cream of roasted parsnip soup, parsnip crisps (v) 110kcal

Chicken liver pâté, fruit chutney, croûtes 360kcal

Duo of melon, pear and mint compote (v) 52kcal

MAINS

Roast beef and Yorkshire puddings, roast potatoes, seasonal vegetables 487kcal

Pan-fried chicken breast, champ mash, honey-roasted root vegetables, red wine jus 575kcal

Slow-roasted pork belly, fondant potatoes, vegetables, chorizo and cider cream sauce 550kcal

Oven-baked salmon fillet, crushed new potatoes, vegetables, white wine cream sauce 352kcal

Leek, new potato and cheddar gratin, grain mustard, herbs (v) 207kcal

DESSERTS

Sticky toffee pudding and custard (v) 497kcal

Rhubarb knickerbocker glory (v) 596kcal

Baileys cheesecake (v) 395kcal

v) vegetarian | (ve) vegan | Adults need around 2,000kcal a day
Food allergies and intolerances: we welcome enquiries from guests who wish to know whether dishes contain particular ingredients. Please note: before placing your order please inform a member of the team if anyone in your party has a food allergy. Prices include VAT.

WEDDING MENU - £42 per person

STARTERS

Roasted red pepper and cherry tomato soup,
basil croutons (v) 90kcal

Prawn cocktail 'Mirabelle' 258kcal

Ham hock terrine, homemade piccalilli 400kcal

Caprese salad - tomato, mozzarella, basil, pesto (v) 82kcal

MAINS

Pan-fried chicken breast, new potatoes, leeks, spinach, Forestiere sauce
600kcal

Roast beef sirloin, Yorkshire pudding, roast gravy,
chateau potatoes 552kcal

Baked salmon fillet, crushed new potatoes,
broccoli, béarnaise 325kcal

Blue cheese, mushroom and walnut risotto (v) 280kcal

DESSERTS

Maltesers cheesecake (v) 796kcal

Pain au chocolat bread and butter pudding,
custard (v) 527kcal

Banoffee pie (v) 338kcal

Vanilla ice cream and stewed berries,
brandy snap basket 230kcal

(v) vegetarian | (ve) vegan | Adults need around 2,000kcal a day

Food allergies and intolerances: we welcome enquiries from guests who wish to know whether dishes contain particular ingredients. Please note: before placing your order please inform a member of the team if anyone in your party has a food allergy.

Prices include VAT.

Sample Wedding Menu 2

Christmas & New Year

Join us this festive season and discover sparkling Christmas trees, twinkling fairy lights and elegant decorations.

PRIVATE & SHARED CHRISTMAS PARTIES

Enjoy a drink on arrival, a sumptuous three-course meal with half a bottle of wine and a disco to dance the night away!

Sunday to Thursday £33 per person

Friday and Saturday £45 per person

Please note, minimum numbers apply for private parties.

CHRISTMAS LUNCHS

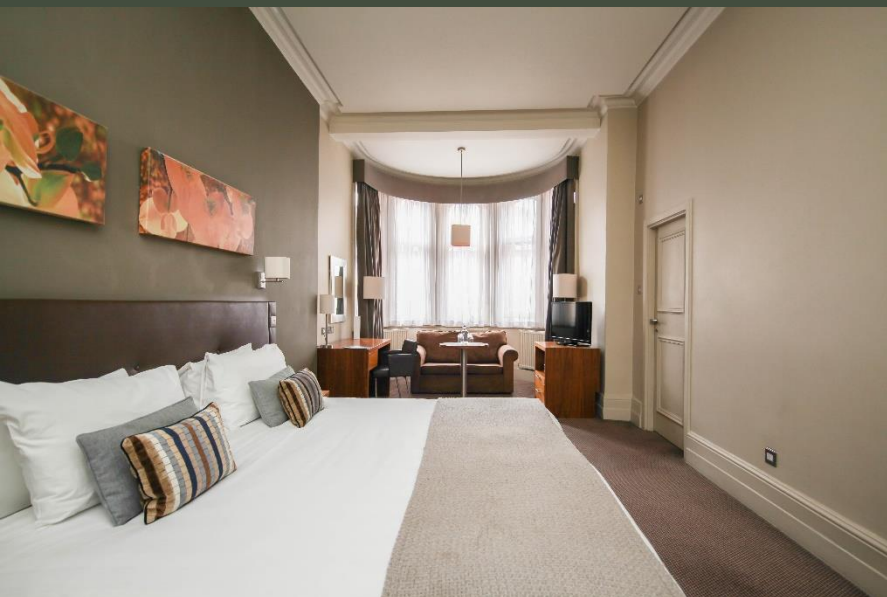
A relaxed festive lunch with a party atmosphere.

£25 per person

Get in touch about our festive accommodation offers and bespoke party packages.

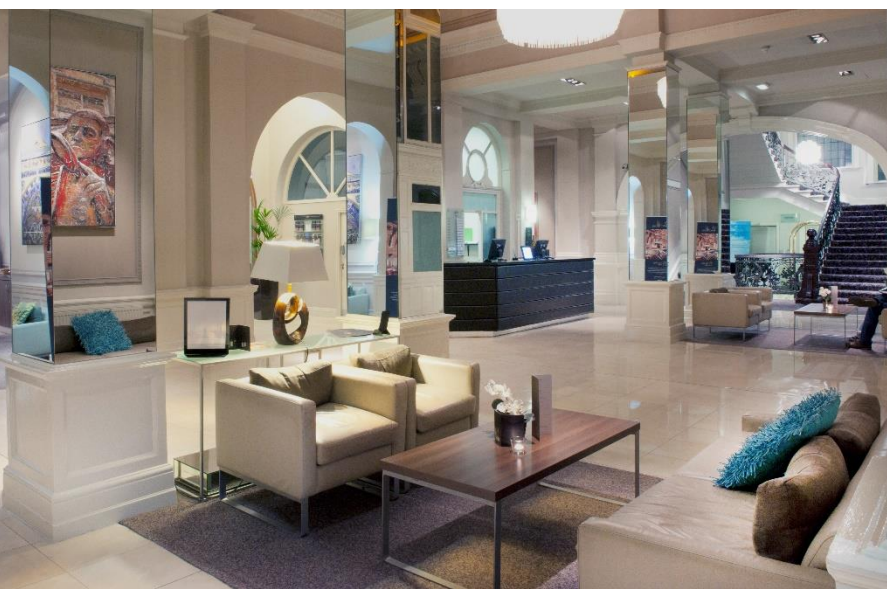


Accommodation



ACCOMODATION AT A GLANCE

- 120 En-suite bedrooms with bath & shower combination
- 24 hour room service
- 300 thread-count cotton bed linen
- Antipodes toiletries in bathroom
- Flat screen TV
- Fast, free Wi-Fi
- Mineral water
- Tea and coffee making facilities
- Complimentary compact city gym



Pricing for accommodation starts from £99.00 per evening including full English breakfast, based on two people sharing



Tempus Bar & Restaurant

During your stay at The Met Hotel, visit Tempus Bar & Restaurant on the ground floor offering:

- Hot and cold buffet lunches
- Modern British dinner menu
- Fresh fish, meat and vegetarian dishes
- Extensive wine list
- Private dining room
- Busy, friendly bar
- Open 7 days a week



Essential Information

CAPACITIES & DIMENSIONS



CAPACITY

| Room Name | Floor | Theatre | Cabaret | Classroom | Boardroom | U Shape | Banquet | Dinner Dance | Reception | Exhibition space sqm |
|---------------------------|-------|---------|---------|-----------|-----------|---------|---------|--------------|-----------|----------------------|
| Met Suite | GF | 250 | 150 | 140 | 50 | 50 | 220 | 150 | 200 | 239 |
| Met 1 | GF | 150 | 80 | 60 | 40 | 40 | 100 | 80 | 100 | 119 |
| Met 2 | GF | 60 | 40 | 26 | 30 | 26 | 40 | 40 | 70 | 63 |
| Met 3 | GF | 45 | 32 | 20 | 26 | 20 | - | - | 40 | 58 |
| Met 5 | 1F | 12 | - | - | 5 | - | - | - | - | 15 |
| Met 6 | 1F | 24 | - | 10 | 12 | 8 | - | - | - | 28 |
| Met 8 | 1F | 40 | 32 | 18 | 24 | 20 | - | - | - | 44 |
| Met 9 | 1F | 60 | 40 | 30 | 30 | 26 | - | - | - | 64 |
| Met 10 | 1F | 90 | 64 | 50 | 30 | 28 | - | - | - | 108 |
| Barbara Hepworth (Met 12) | LG | - | - | - | 12 | - | - | - | - | 24 |
| Judi Dench (Met 14) | LG | - | - | - | 14 | - | - | - | - | 33 |
| Betty Boothroyd (Met 15) | LG | 40 | 32 | 24 | 20 | 24 | - | - | - | 57 |
| Bronte Sisters (Met 16) | LG | 40 | 32 | 22 | 20 | 24 | - | - | - | 54 |
| Brian Boffey (Met 17) | LG | 40 | 32 | 24 | 18 | 20 | - | - | - | 47 |
| Helen Fielding (Met 18) | LG | - | - | - | 12 | - | - | - | - | 25 |

TECHNICAL INFORMATION

| Room Name | Daylight | Access | Built in AV | 3 Phase | Dimmer lights | Wireless or hard wired broadband | Length m | Width m | Area sqm | Ceiling height m |
|---------------------------|----------|-------------|-------------|---------|---------------|----------------------------------|----------|---------|----------|------------------|
| Met Suite | No | Direct | No | Yes | Yes | Both | 23.5 | 10.2 | 239 | 4.7 |
| Met 1 | Yes | Direct | Screen | No | Yes | Both | 14.4 | 8.3 | 119 | 4.5 |
| Met 2 | Yes | Direct | No | No | Yes | Both | 8.1 | 7.8 | 63 | 4.8 |
| Met 3 | Yes | Direct | No | No | Yes | Both | 9.9 | 6.7 | 58 | 3.7 |
| Met 5 | Yes | Lift/Stairs | LCD TV | No | Yes | Both | 4.6 | 3.4 | 15 | 3.3 |
| Met 6 | Yes | Lift/Stairs | LCD TV | No | Yes | Both | 5.5 | 5.2 | 28 | 3.3 |
| Met 8 | No | Lift/Stairs | No | No | Yes | Both | 6.8 | 6.5 | 44 | 3.3 |
| Met 9 | No | Lift/Stairs | No | No | Yes | Both | 8.4 | 8.0 | 64 | 3.3 |
| Met 10 | Yes | Lift/Stairs | No | No | Yes | Both | 8.4 | 14.5 | 108 | 3.3 |
| Barbara Hepworth (Met 12) | Yes | Lift/Stairs | LCD TV | No | No | Both | 6.4 | 3.5 | 22 | 2.3 |
| Judi Dench (Met 14) | Yes | Lift/Stairs | LCD TV | No | No | Both | 6.4 | 5.5 | 35 | 2.3 |
| Betty Boothroyd (Met 15) | Yes | Lift/Stairs | LCD TV | No | No | Both | 8.1 | 5.9 | 47 | 3.3 |
| Bronte Sisters (Met 16) | Yes | Lift/Stairs | Screen | No | No | Both | 7.9 | 6.2 | 48 | 2.3 |
| Brian Boffey (Met 17) | Yes | Lift/Stairs | LCD TV | No | No | Both | 7.4 | 6.3 | 46 | 2.3 |
| Helen Fielding (Met 18) | No | Lift/Stairs | LCD TV | No | No | Both | 6.6 | 3.5 | 23 | 2.3 |

How to find us

BY AIR

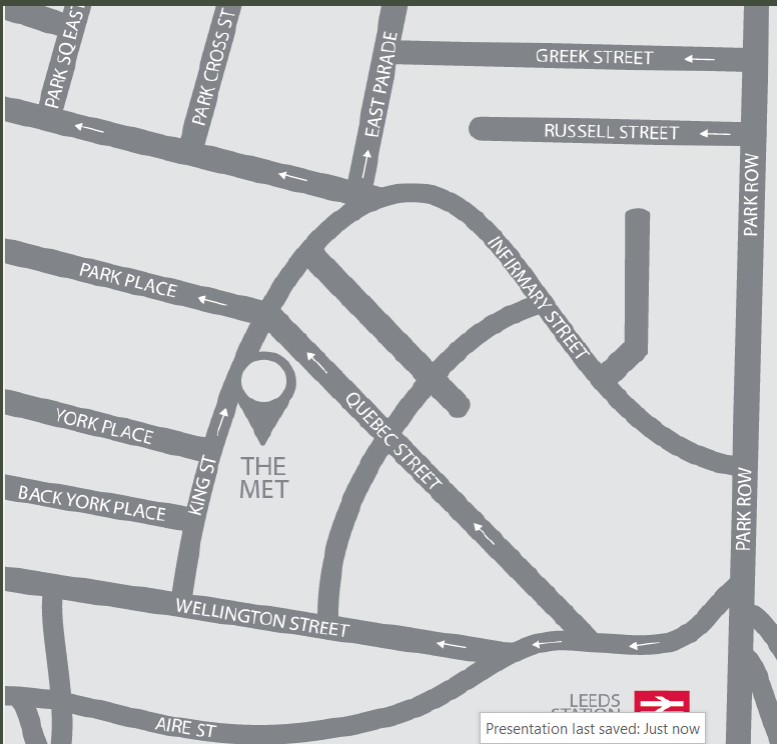
Leeds Bradford Airport, 10 miles; regular shuttle bus, journey time 35 minutes

BY RAIL

Three minutes walk from Leeds station;
London to Leeds in two hours

BY ROAD

Follow signs for Leeds train station; the hotel is on King Street just off Wellington Street, Postcode LS1 2HQ. Limited onsite parking is available at an extra charge. Parking is also available at City Park on Whitehall Road at a reduced fee – reception will validate your ticket.





EXCLUSIVELY FOR EVERYONE

mia
meetings industry association

THE MET HOTEL
+44 (0) 113 245 0841
KING STREET, LEEDS,
WEST YORKSHIRE LS1 2HQ