

When it comes to events we create memorable experiences with real inclusions at real prices, and with your Event Specialist on hand we make your life stress-free, by providing everything you need to create the event that you want. You'll wish every aspect of life could be as easy as hosting your meeting, party, workshop or training with us.

Nesuto. *stay real*

**MEET, WORK & PLAY
@ NESUTO CURTIN**

nesuto
CURTIN

MEET, WORK & PLAY @NESUTO CURTIN

Nesuto Curtin is well placed as a premier hotel located in The Exchange, Curtin University's first dedicated industry-connected innovation precinct.

Set within the university grounds opposite Curtin Stadium near Technology Park, Perth Hockey Stadium and the famous Optus Stadium, our location makes it an ideal base for solo travellers, families visiting students or groups travelling for sporting events.

Our specialist Events team are experts at creating memorable events and will work with you to tailor a package to suit your budget and wishlist.

With spacious and comfortable accommodation, versatile function rooms, onsite restaurant, and easy access, Nesuto Curtin offers something for every traveller - whether for business or leisure.

QUICK FACTS

<i>Hotel Key Features</i>	<i>Location</i>
<ul style="list-style-type: none">• Dedicated function floor with plenty of natural light• 60 spacious superior rooms and suites• On site breakfast lounge, Karla Mia• 24-hour Reception• Wireless internet access	<ul style="list-style-type: none">• Within Curtin University's Bentley Campus• Curtin Central Bus Station – 50m• Curtin Stadium – 75m• Perth Hockey Stadium – 150m• Technology Park Bentley – 1km• Optus Stadium – 8.5km• Perth CBD – 10km

Please note, terms and conditions apply to all event bookings.





**Event
Specialist**



**Free
Wifi**



**Presenter
Tool Kit**



**Welcome
Gift**



**Afternoon
Surprise &
Delight**



Whiteboard

**INCLUDED
IN EVERY
NESUTO
SPACE**



**Delegate
Service
Menu**



**Inspirational
Doodle
Notepads**



OUR EVENT SPACES

We have 4 flexible function areas
*Bentley 1, Bentley 2,
Bentley Grand and the Rooftop Deck*

AV EQUIPMENT

The following is included complimentary
with your day delegate package:

Whiteboard

Projector & Screen

Flipchart

Lectern

Microphone



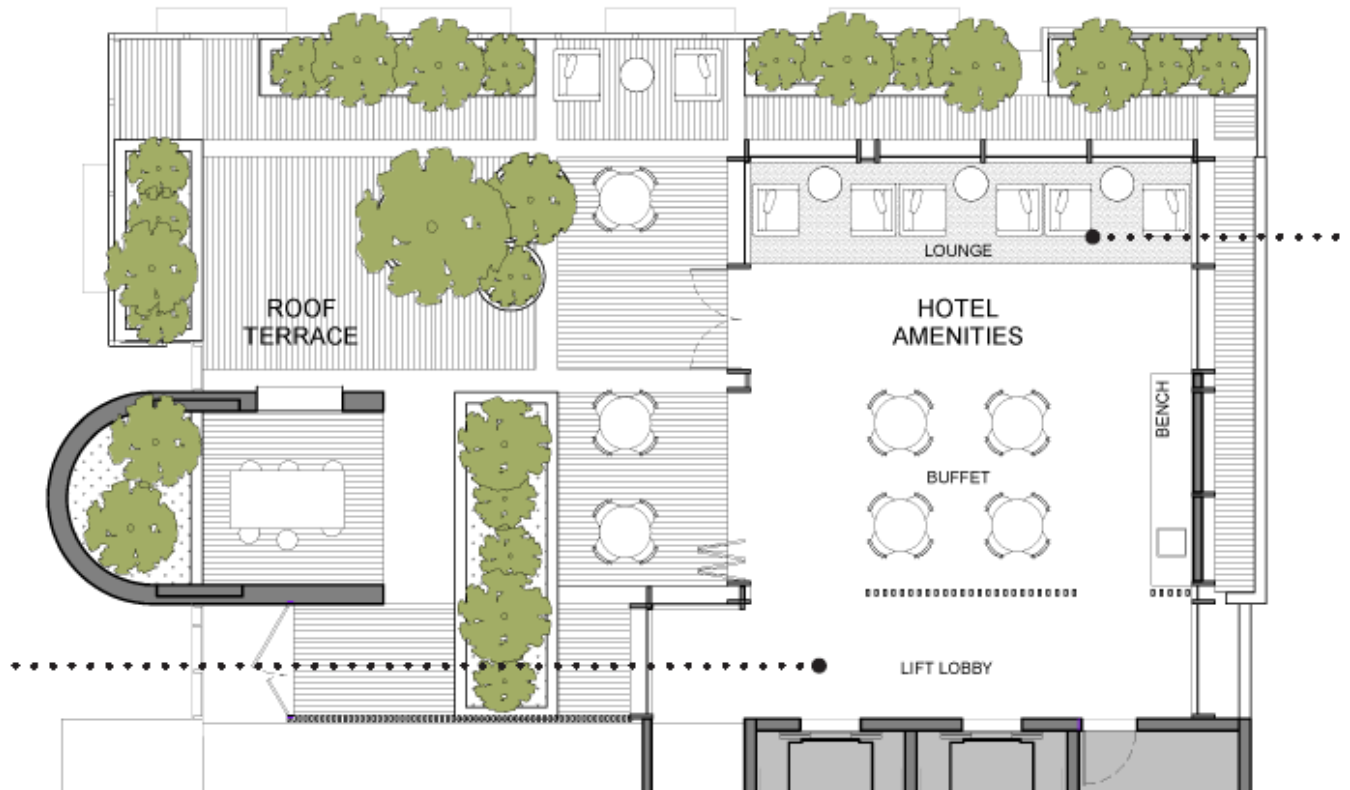
	Dimensions (m)	Area Size (sqm)	Boardroom	Classroom	Theatre	Banquet	Cocktail
Bentley 1	8 x 6.4	52	16	12	34	30	50
Bentley 2	12.5 x 8.8	103	28	24	50	50	50
Bentley Grand	20.5 x 8.8	155	50	36	100	100	100
Rooftop Deck Inside	7.8 x 9.8	77	-	-	-	-	20
Rooftop Deck Outside	11 x 9.5	113	-	-	-	-	30
Rooftop Deck	10 x 19	190	-	-	-	-	50

ROOFTOP DECK

A stunning venue with amazing views, sure to impress your guests. The Rooftop Deck can accommodate up to 50 people utilising both the indoor and outdoor areas.

This space is great for social events such as cocktail parties. It can also be used as a break out room in addition to the Level 2 Function Floor.

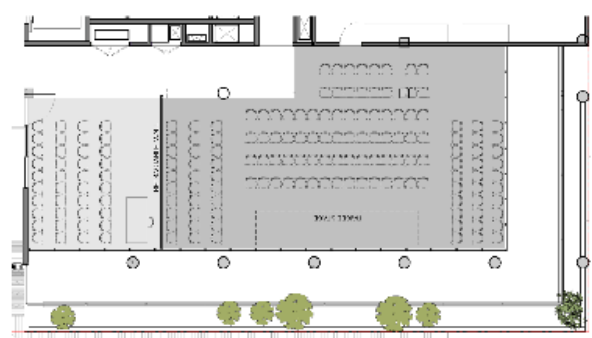
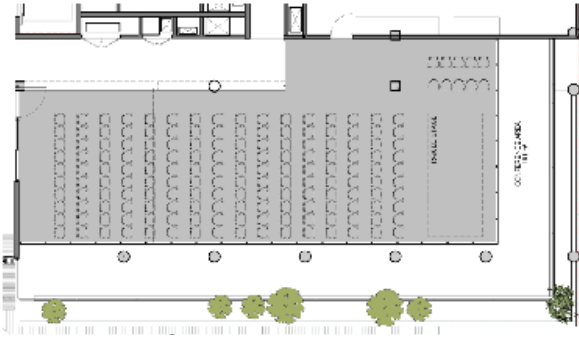
The Rooftop Deck is a licensed area.



BENTLEY FUNCTION ROOMS

The Bentley Grand can accommodate up to 100 guests in various seating styles. This space is perfect for meetings and small conferences

The Bentley Grand also has the ability to be divided into two separate rooms, Bentley 1 and Bentley 2, for smaller events in various set-up styles. These rooms are perfect if you are holding a day seminar and would like a separate break out area



KARLA MIA LOUNGE

Karla Mia Lounge is open for breakfast daily to hotel guests but can also be hired for private events during the day and evening. The bright and airy Lounge is conveniently located on the same level as the Bentley rooms.



ALL PACKAGES INCLUDE

- Room Hire
- Tea/Coffee
- Notepad & Pen
- Chilled water
- Mints
- Whiteboard (If required)
- WiFi
- Projector and Screen

HALF DAY PACKAGE FROM \$50 per person

- Arrival Biscuits
- Morning Tea

FULL DAY PACKAGE FROM \$79 per person

- Morning Tea
- Lunch
- Afternoon Tea

A LA CARTE

For a la carte pricing, please contact our Events Specialist and we can help tailor a package to suit your needs.



ACCOMMODATION

Nesuto Curtin Perth Hotel has a choice of accommodation to suit your stay.

The 50 hotel rooms are spacious and well- designed, there 5 are accessible rooms with the option of an inter-connecting room, and 5 two-bedroom suites offering additional amenities such as 2 individual bedrooms, 2 bathrooms, a dedicated lounge area, and a small kitchenette with microwave.

Each of our guest rooms and suites feature a private outdoor balcony, where views of the lush university grounds can be enjoyed.



CONTACT

Nesuto Curtin
B420 Koorliny Way & Beazley Ave,
Bentley WA 6102, Australia

Tel: +61 8 6255 0800
Email: conference.curtin@nesuto.com

nesuto
CURTIN

