

CVK PARK BOSPHORUS HOTEL

İSTANBUL



HOTELS & RESORTS



CVK PARK BOSPHORUS HOTEL

MEETINGS

CVK Park Bosphorus Hotel Istanbul is the pre-eminent address for meetings and events with its perfect location, easy access, elegant and comfortable venues, enhanced technologic equipment and professional services. 15 versatile and striking venues offer the perfect setting for occasions both large and small, be it intimate business meetings or high-level corporate affairs. Our dedicated team of experts will ensure that your event runs perfectly and makes a lasting impression.





OVER 5000 SQM OF
EVENT SPACES



805 SQM BALLROOM
380 SQM BALLROOM FOYER



1300 SQM TERRACE FLOOR



15 FUNCTION ROOMS



STATE OF THE ART
AV EQUIPMENT

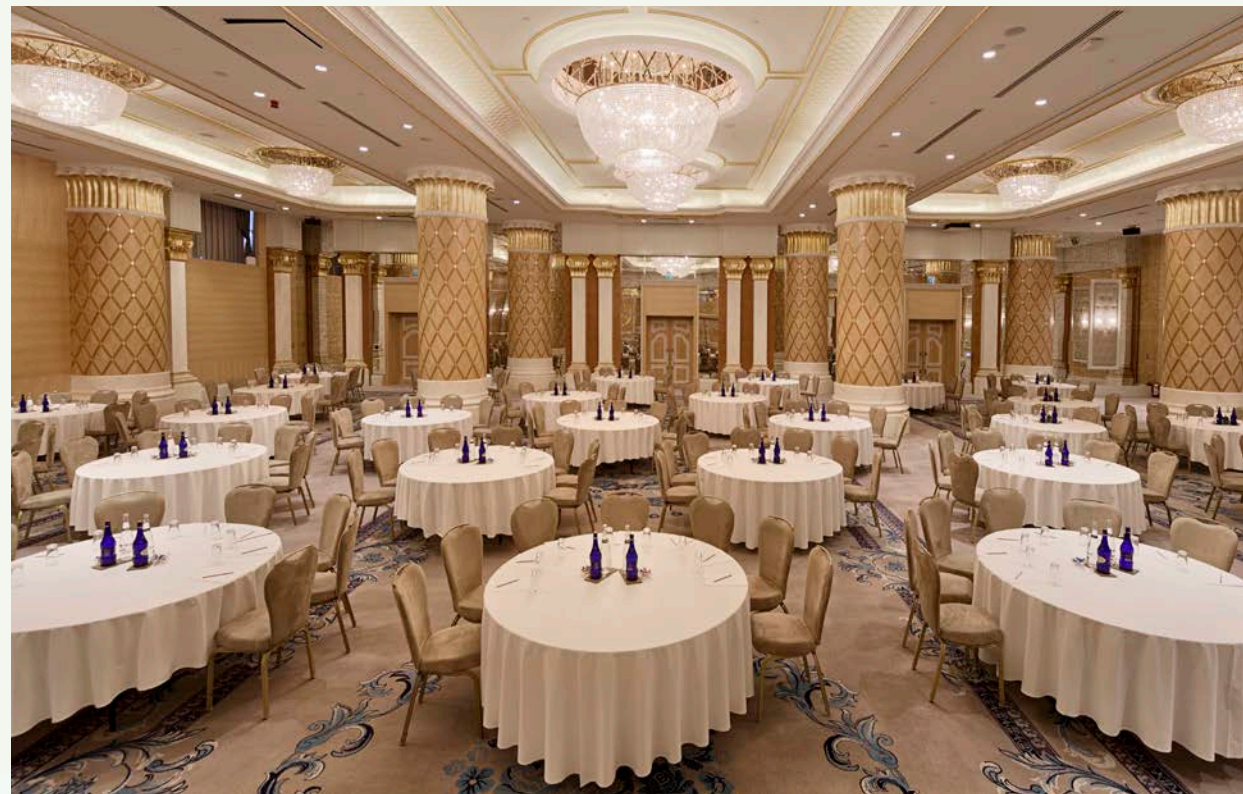


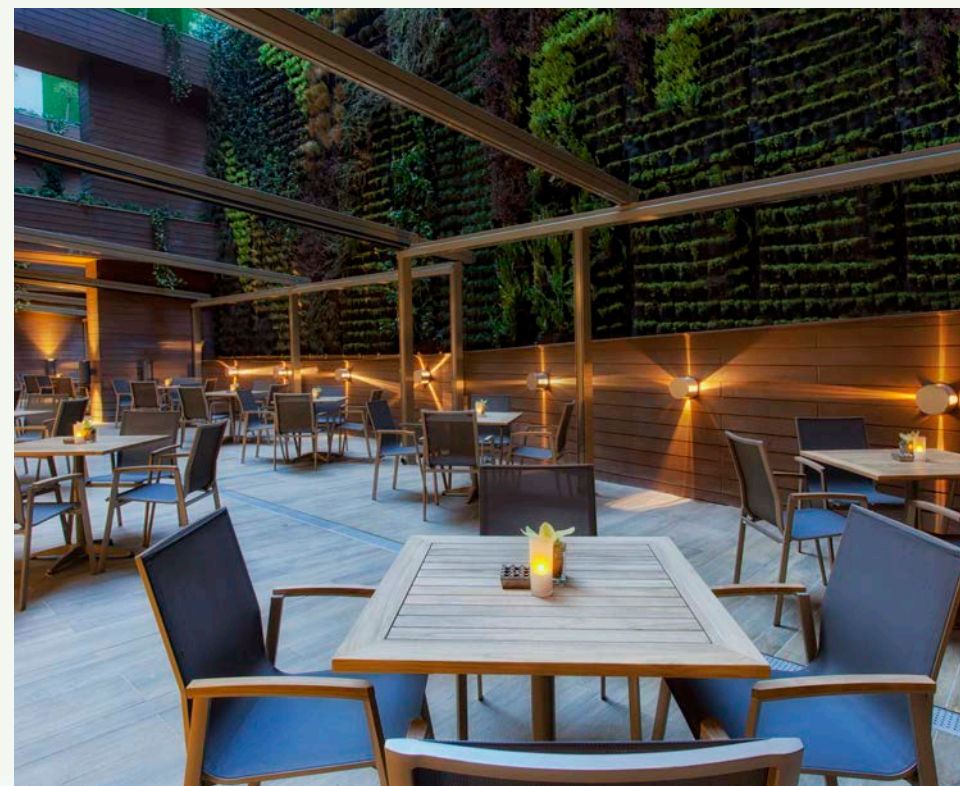
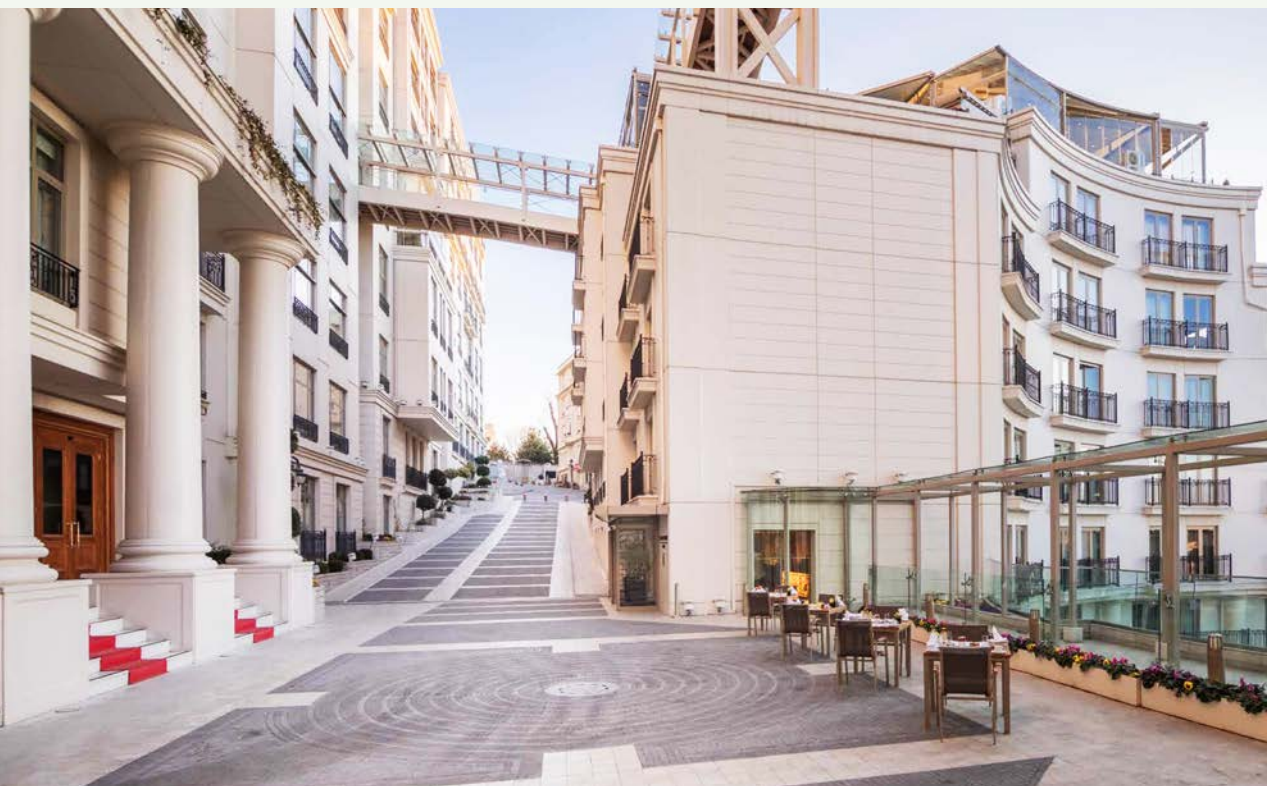
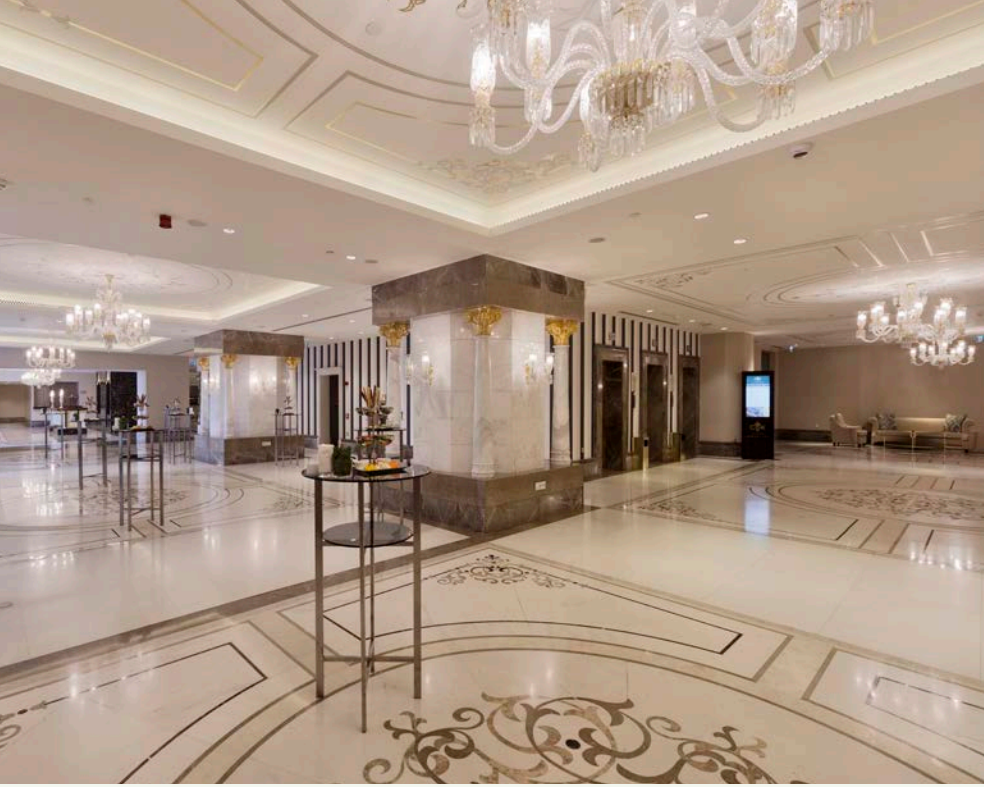
INTERNATIONAL
CULINARY BRIGADE

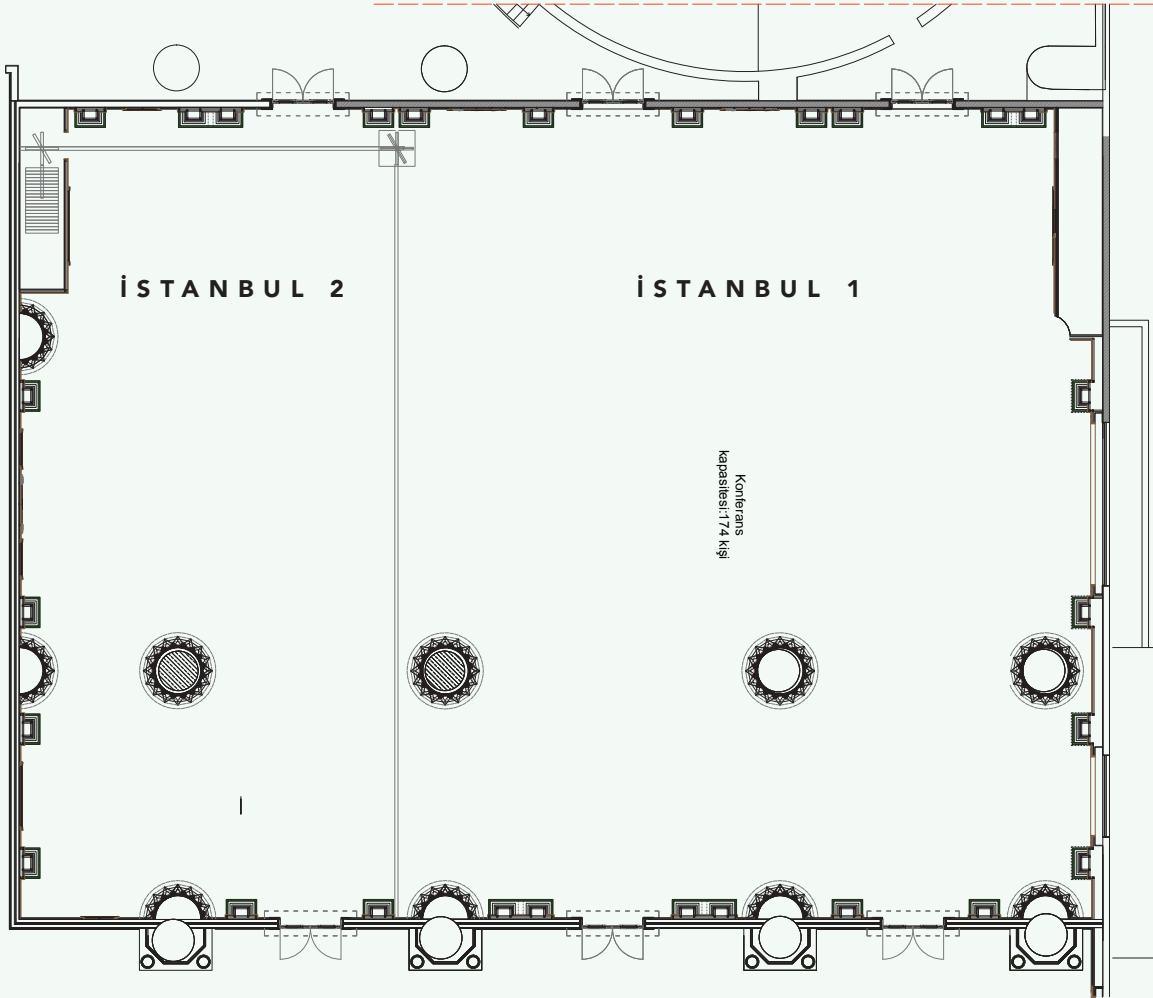




İSTANBUL







İSTANBUL

SALON ÖLÇÜLERİ/MEASURE

Alan/Area	: 805 m ²
Genişlik/Width	: 33,01 m
Boy/Length	: 24,4 m
Yükseklik/Height	: 6 m

KAPASİTE / CAPACITY

Tiyatro/Theatre	: 800-900
Sınıf/Classroom	: 350
Resepsiyon/Reception	: 800
Banket/Banquet	: 500
Blok/Block	: 60
U Düzen/U Shape	: 75
8 Kabare/8 Cabaret	: 300

TEKNİK EKİPMANLAR TECHNICAL EQUIPMENT

- 3 Projeksiyon / Projectors (7000 ANS)
- 1 Projeksiyon / 1 Projector (10.000 ANS)
- 3 Projeksiyon Perdesi / 3 Projector Curtians (500 x 300 cm)
- 1 Projeksiyon Perdesi / 1 Projector Curtian (700 x 500 cm)
- 3 Adet Dijital Ekran / 3 Digital Screens

ISTANBUL 1

SALON ÖLÇÜLERİ / MEASURE

Alan/Area	: 525 m ²
Genişlik/Width	: 21,62 m
Boy/Length	: 24,4 m
Yükseklik/Height	: 6 m

KAPASİTE / CAPACITY

Tiyatro/Theatre	: 450
Sınıf/Classroom	: 138
Resepsiyon/Reception	: 525
Banket/Banquet	: 230
Blok/Block	: 42
U Düzen/U Shape	: 51
8 Kabare/8 Cabaret	: 184

ISTANBUL 2

SALON ÖLÇÜLERİ / MEASURE

Alan/Area	: 275 m ²
Genişlik/Width	: 11,39 m
Boy/Length	: 24,4 m
Yükseklik/Height	: 6 m

KAPASİTE / CAPACITY

Tiyatro/Theatre	: 170
Sınıf/Classroom	: 90
Resepsiyon/Reception	: 275
Banket/Banquet	: 130
Blok/Block	: 42
U Düzen/U Shape	: 45
8 Kabare/8 Cabaret	: 104

ISTANBUL FUAYE / ISTANBUL FOYER

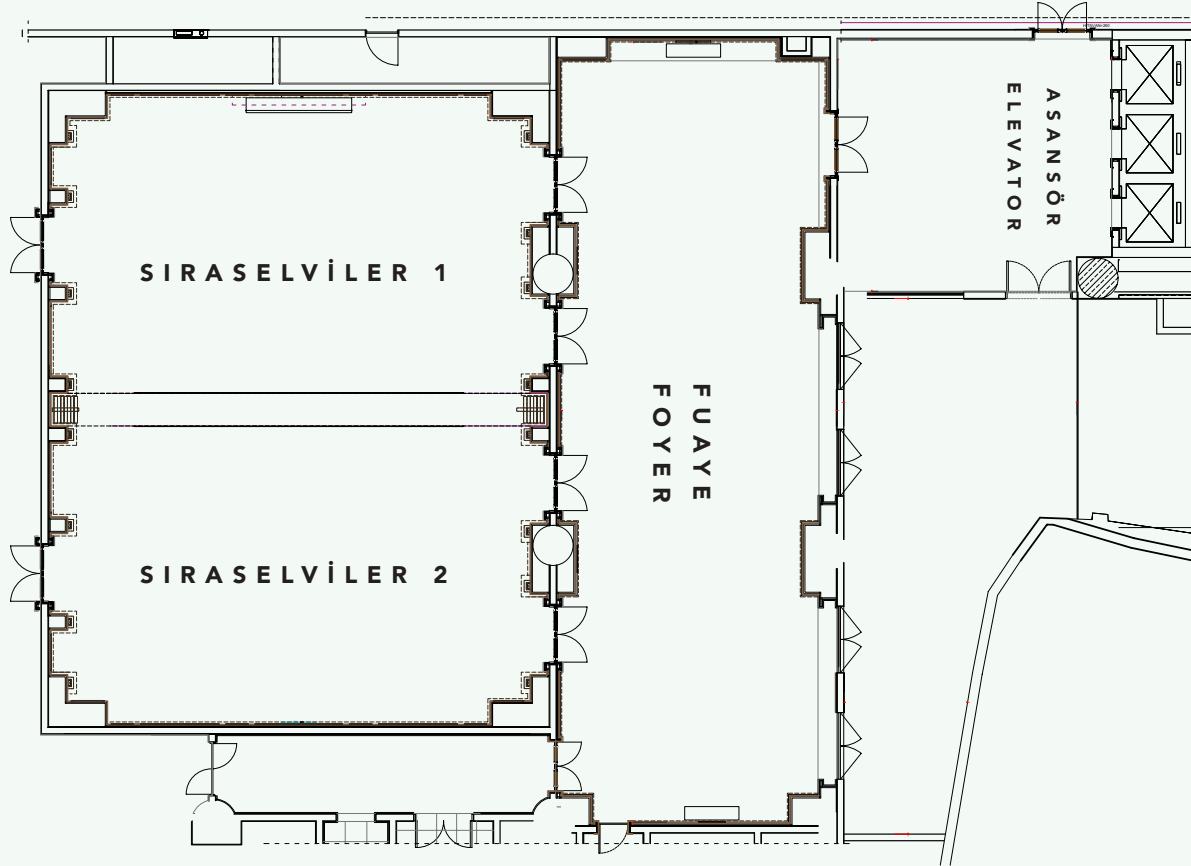
SALON ÖLÇÜLERİ / MEASURE

Alan/Area	: 380 m ²
-----------	----------------------



SIRASELVILER





SIRASELVİLER

SALON ÖLÇÜLERİ/MEASURE

Alan/Area	: 282 m ²
Genişlik/Width	: 18,92 m
Boy/Length	: 14,9 m
Yükseklik/Height	: 2,8 m

KAPASİTE / CAPACITY

Tiyatro/Theatre	: 200
Sınıf/Classroom	: 120
Resepsiyon/Reception	: 250
Banket/Banquet	: 200
Blok/Block	: 40
U Düzen/U Shape	: 50
8 Kabare/8 Cabaret	: 160

TEKNİK EKİPMANLAR TECHNICAL EQUIPMENT

- 2 Projeksiyon / 2 Projectors (3500 ANS)
- 2 Projektör Perdesi / 2 Projector Curtains (170 x 280 cm)
- 3 Adet Dijital Ekran / 3 Digital Screens

SIRASELVİLER 1

SALON ÖLÇÜLERİ / MEASURE

Alan/Area	: 141 m ²
Genişlik/Width	: 9,46 m
Boy/Length	: 14,9 m
Yükseklik/Height	: 2,8 m

KAPASİTE / CAPACITY

Tiyatro/Theatre	: 80
Sınıf/Classroom	: 60
Resepsiyon/Reception	: 100
Banket/Banquet	: 70
Blok/Block	: 18
U Düzen/U Shape	: 21
8 Kabare/8 Cabaret	: 56

SIRASELVİLER 2

SALON ÖLÇÜLERİ / MEASURE

Alan/Area	: 141 m ²
Genişlik/Width	: 9,46 m
Boy/Length	: 14,9 m
Yükseklik/Height	: 2,8 m

KAPASİTE / CAPACITY

Tiyatro/Theatre	: 80
Sınıf/Classroom	: 60
Resepsiyon/Reception	: 100
Banket/Banquet	: 70
Blok/Block	: 18
U Düzen/U Shape	: 21
8 Kabare/8 Cabaret	: 56

SIRASELVİLER FUAYE / SIRASELVİLER FOYER

SALON ÖLÇÜLERİ / MEASURE

Alan/Area	: 190 m ²
-----------	----------------------

SIRASELVİLER TERAS / SIRASELVİLER TERRACE

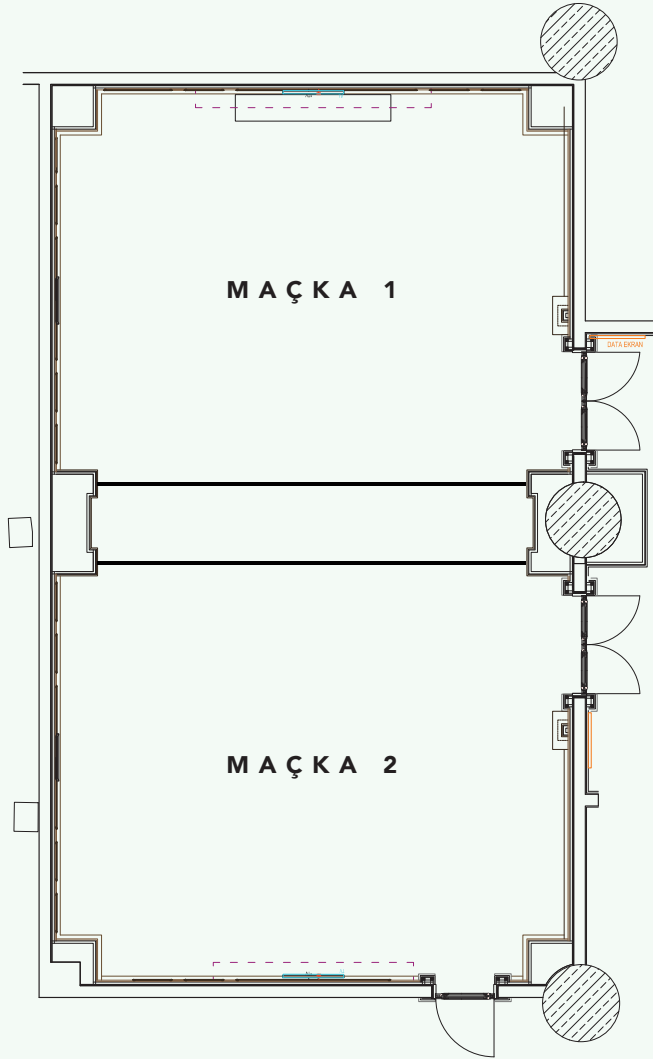
Alan/Area	: 85 m ²
-----------	---------------------



MAÇKA



CVK PARK BOSPHORUS HOTEL
İSTANBUL
CVK
www.cvkhoteles.com



MAÇKA

SALON ÖLÇÜLERİ/MEASURE

Alan/Area	: 137 m ²
Genişlik/Width	: 15 m
Boy/Length	: 7,7 m
Yükseklik/Height	: 2,8 m

KAPASİTE / CAPACITY

Tiyatro/Theatre	: 80
Sınıf/Classroom	: 48
Resepsiyon/Reception	: 80
Banket/Banquet	: 64
Blok/Block	: 30
U Düzen/U Shape	: 36
8 Kabare/8 Cabaret	: 48

TEKNİK EKİPMANLAR TECHNICAL EQUIPMENT

- 2 Projeksiyon / 2 Projectors (3500 ANS)
- 2 Projektör Perdesi / 2 Projector Curtains (170 x 280 cm)
- 2 Adet Dijital Ekran / 2 Digital Screens

MAÇKA 1

SALON ÖLÇÜLERİ / MEASURE

Alan/Area	: 65 m ²
Genişlik/Width	: 7,3 m
Boy/Length	: 7,7 m
Yükseklik/Height	: 2,8 m

KAPASİTE / CAPACITY

Tiyatro/Theatre	: 40
Sınıf/Classroom	: 18
Resepsiyon/Reception	: 40
Banket/Banquet	: 30
Blok/Block	: 12
U Düzen/U Shape	: 15
8 Kabare/8 Cabaret	: 24

MAÇKA 2

SALON ÖLÇÜLERİ / MEASURE

Alan/Area	: 72 m ²
Genişlik/Width	: 7,71 m
Boy/Length	: 7,7 m
Yükseklik/Height	: 2,8 m

KAPASİTE / CAPACITY

Tiyatro/Theatre	: 40
Sınıf/Classroom	: 18
Resepsiyon/Reception	: 40
Banket/Banquet	: 30
Blok/Block	: 12
U Düzen/U Shape	: 15
8 Kabare/8 Cabaret	: 24

MAÇKA FUAYE / MAÇKA FOYER

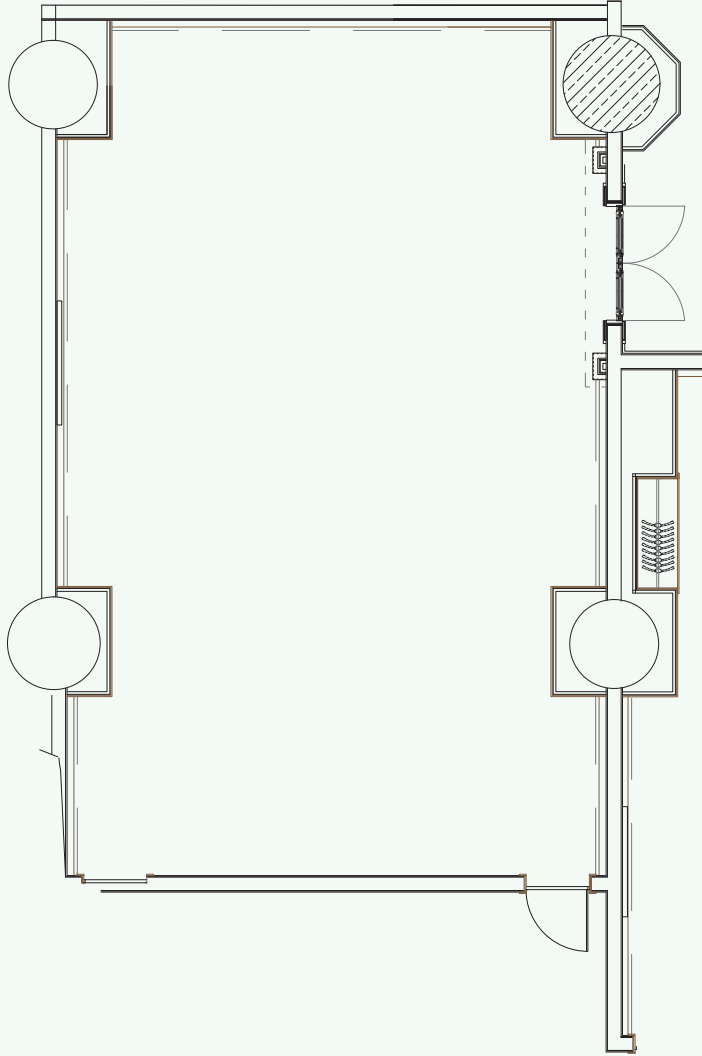
SALON ÖLÇÜLERİ / MEASURE

Alan/Area	: 77 m ²
-----------	---------------------



BEYOĞLU





BEYOĞLU

SALON ÖLÇÜLERİ/MEASURE

Alan/Area	: 95 m ²
Genişlik/Width	: 12,24 m
Boy/Length	: 7,72 m
Yükseklik/Height	: 2,8 m

KAPASİTE / CAPACITY

Tiyatro/Theatre	: 60
Sınıf/Classroom	: 42
Resepsiyon/Reception	: 90
Banket/Banquet	: 50
Blok/Block	: 30
U Düzen/U Shape	: 33
8 Kabare/8 Cabaret	: 40

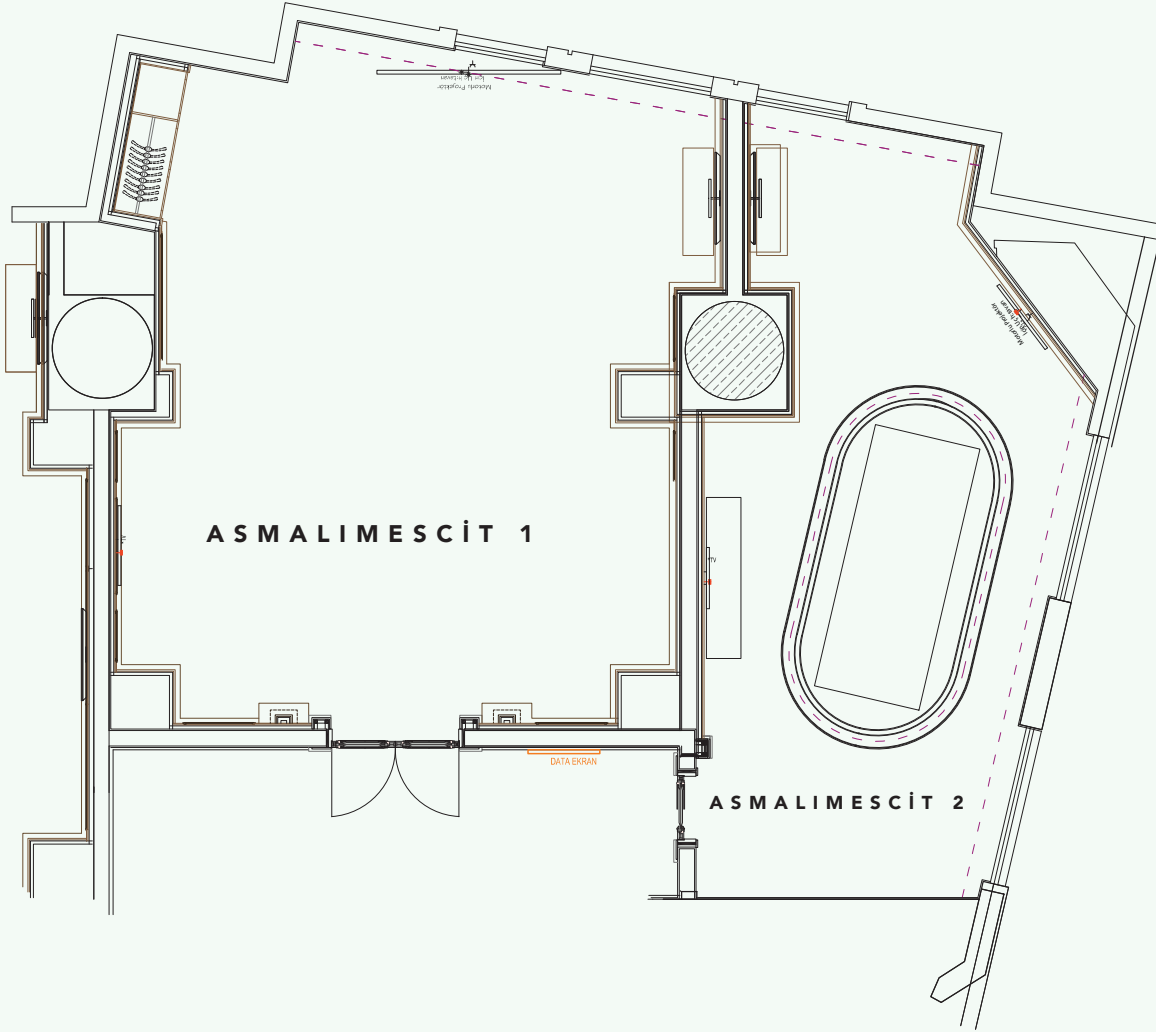
TEKNİK EKİPMANLAR TECHNICAL EQUIPMENT

- 1 Projeksiyon / 1 Projector (3500 ANS)
- 1 Projektör Perdesi / 1 Projector Curtain (170 x 280 cm)
- 1 Adet Dijital Ekran / 1 Digital Screen



ASMALIMESCIT





ASMALIMESCİT 1

SALON ÖLÇÜLERİ/MEASURE

Alan/Area	: 60 m ²
Genişlik/Width	: 9,48 m
Boy/Length	: 7,27 m
Yükseklik/Height	: 2,8 m

KAPASİTE / CAPACITY

Tiyatro/Theatre	: 36
Sınıf/Classroom	: 24
Resepsiyon/Reception	: 55
Banket/Banquet	: 30
Blok/Block	: 18
U Düzen/U Shape	: 21
8 Kabare/8 Cabaret	: 24

ASMALIMESCİT 2

SALON ÖLÇÜLERİ/MEASURE

Alan/Area	: 40 m ²
Genişlik/Width	: 10,17 m
Boy/Length	: 3,45 m
Yükseklik/Height	: 2,8 m

KAPASİTE / CAPACITY

Blok/Block	: 11
------------	------

A S M A L I M E S C I T

T E K N İ K E K İ P M A N L A R
TECHNICAL EQUIPMENT

1 Projeksiyon / 1 Projector (3500 ANS)

1 Projektör Perdesi / 1 Projector Curtain (170 x
280 cm)

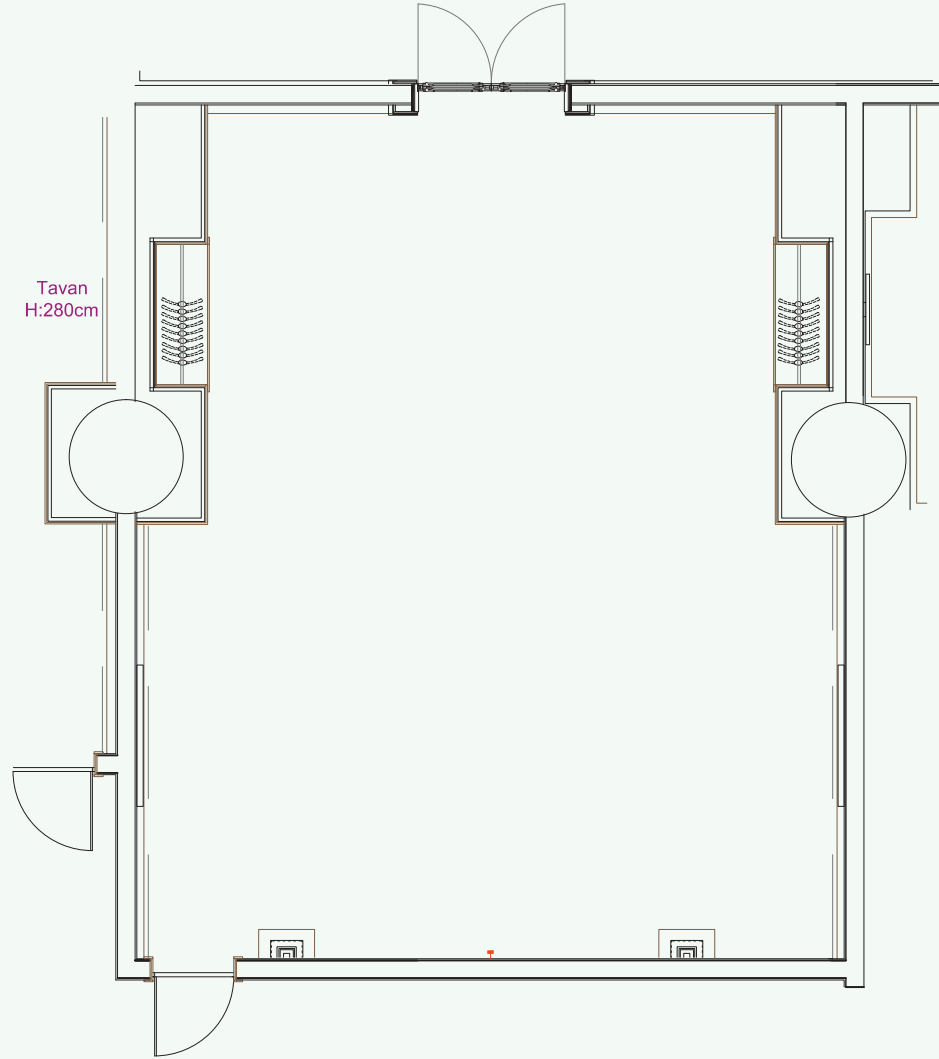
2 Adet Dijital Ekran / 2 Digital Screens

Gün Işığı Alıyor / Daylight



P E R A





PERA

SALON ÖLÇÜLERİ/MEASURE

Alan/Area	: 78 m ²
Genişlik/Width	: 7,94 m
Boy/Length	: 9,53 m
Yükseklik/Height	: 2,8 m

KAPASİTE / CAPACITY

Tiyatro/Theatre	: 50
Sınıf/Classroom	: 30
Resepsiyon/Reception	: 75
Banket/Banquet	: 30
Blok/Block	: 26
U Düzen/U Shape	: 15
8 Kabare/8 Cabaret	: 24

TEKNİK EKİPMANLAR TECHNICAL EQUIPMENT

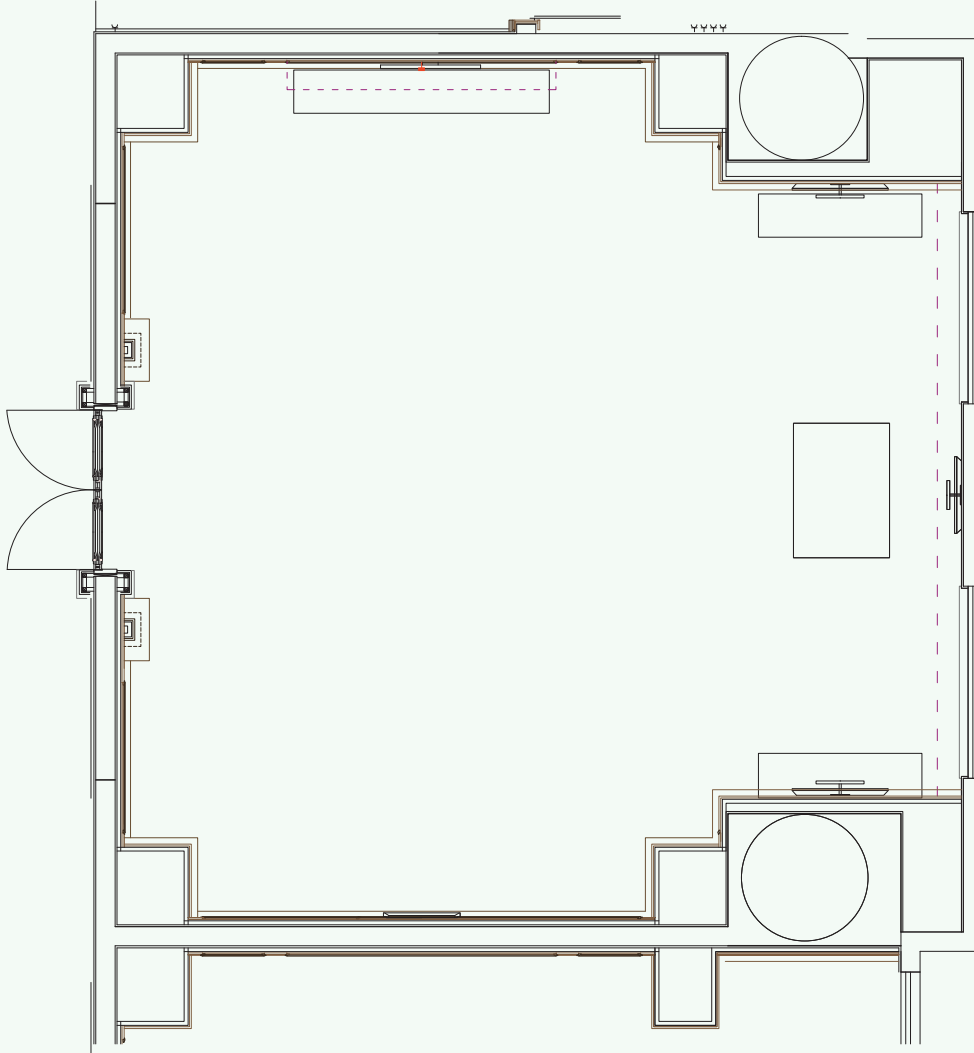
- 1 Projeksiyon / 1 Projector (3500 ANS)
- 1 Projektör Perdesi / 1 Projector Curtain (170 x 280 cm)
- 1 Adet Dijital Ekran / 1 Digital Screen



TOPHANE



CVK PARK BOSPHORUS HOTEL
ISTANBUL
CVK
HOTELS & RESORTS



TOPHANE

SALON ÖLÇÜLERİ/MEASURE

Alan/Area	: 70 m ²
Genişlik/Width	: 7,9 m
Boy/Length	: 8,98 m
Yükseklik/Height	: 2,8 m

KAPASİTE / CAPACITY

Tiyatro/Theatre	: 42
Sınıf/Classroom	: 24
Resepsiyon/Reception	: 70
Banket/Banquet	: 40
Blok/Block	: 18
U Düzen/U Shape	: 21
8 Kabare/8 Cabaret	: 32

TEKNİK EKİPMANLAR TECHNICAL EQUIPMENT

- 1 Projeksiyon / 1 Projector (3500 ANS)
- 1 Projektör Perdesi / 1 Projector Curtain (170 x 280 cm)
- 1 Adet Dijital Ekran / 1 Digital Screen
- Gün Işığı Alıyor / Daylight



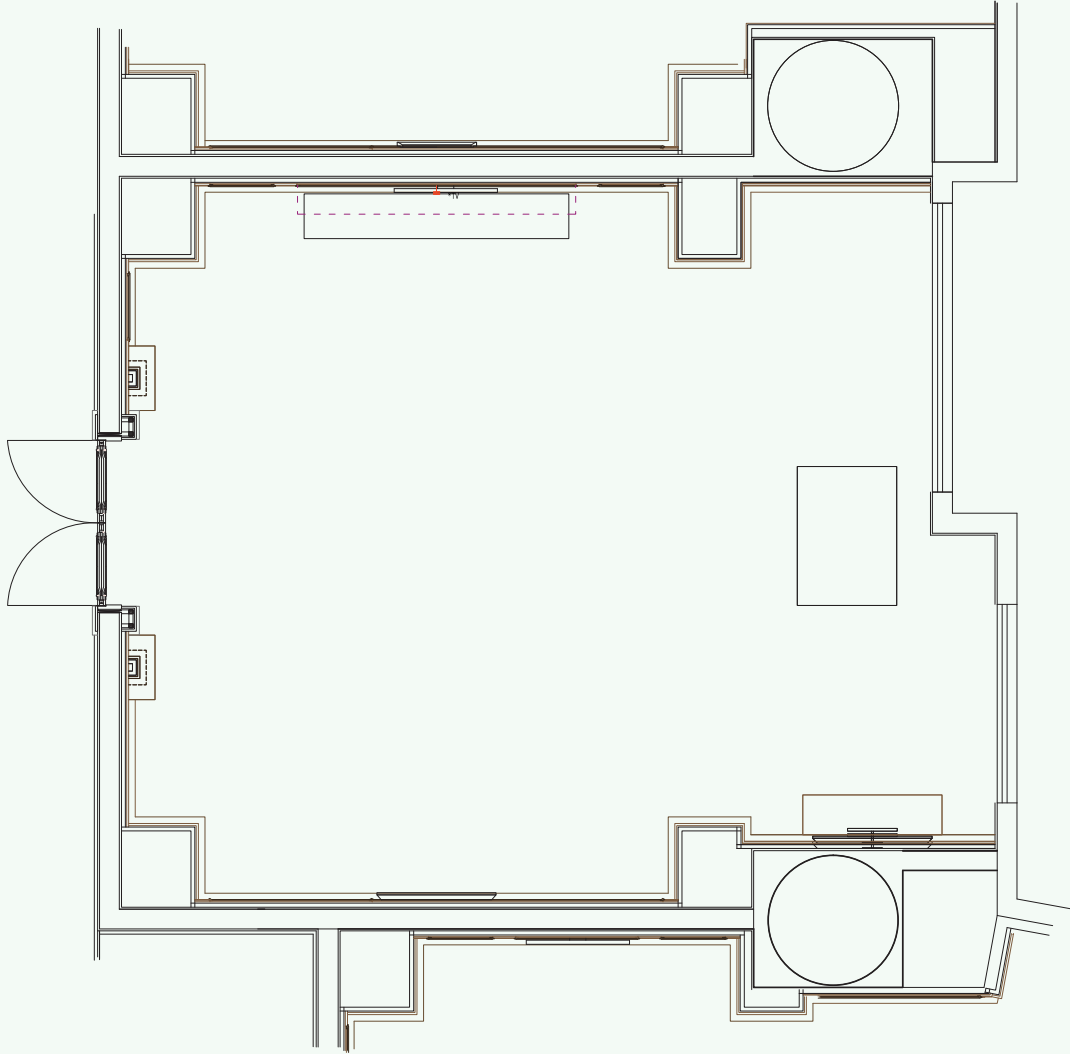
C İ H A N G İ R



CVK PARK BOSPHORUS HOTEL
ISTANBUL
CVK
HOTEL & RESORTS

CVK PARK BOSPHORUS HOTEL
ISTANBUL
CVK
HOTELS & RESORTS





CİHANGİR

SALON ÖLÇÜLERİ/MEASURE

Alan/Area	: 55 m ²
Genişlik/Width	: 7,18 m
Boy/Length	: 7,18 m
Yükseklik/Height	: 2,8 m

KAPASİTE / CAPACITY

Tiyatro/Theatre	: 36
Sınıf/Classroom	: 24
Resepsiyon/Reception	: 50
Banket/Banquet	: 30
Blok/Block	: 18
U Düzen/U Shape	: 15
8 Kabare/8 Cabaret	: 24

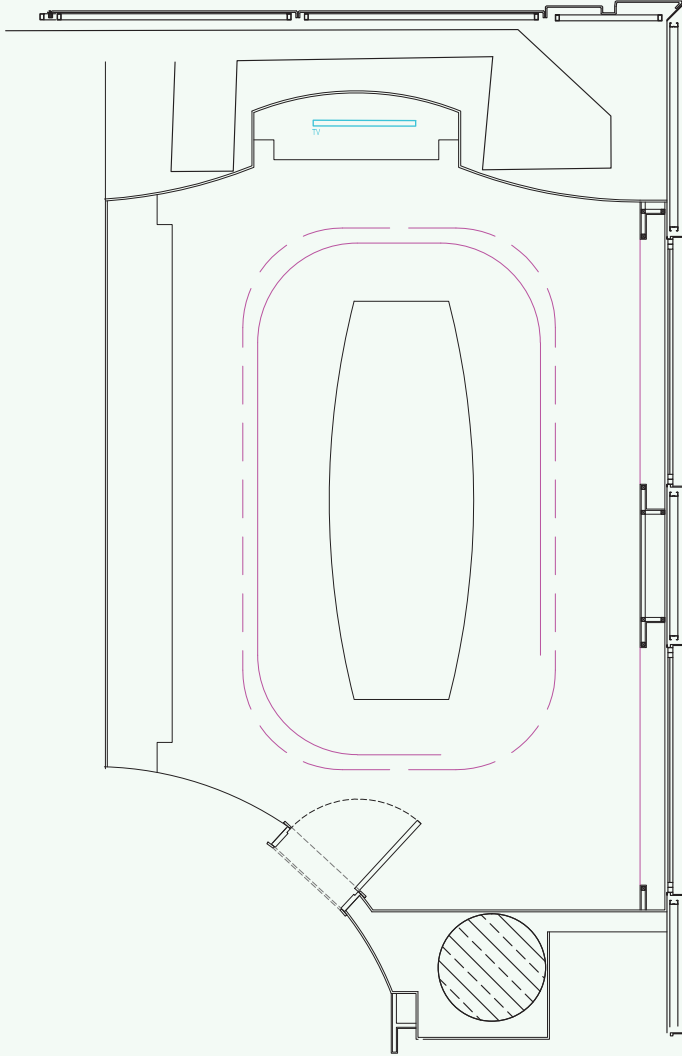
TEKNİK EKİPMANLAR TECHNICAL EQUIPMENT

1 Projeksiyon / 1 Projector (3500 ANS)
1 Projektör Perdesi / 1 Projector Curtain (170 x 280 cm)
1 Adet Dijital Ekran / 1 Digital Screen
Gün Işığı Alıyor / Daylight



AYASPAŞA





AYASPAŞA

SALON ÖLÇÜLERİ/MEASURE

Alan/Area : 40 m²

Genişlik/Width : 5,56 m

Boy/Length : 7,21 m

Yükseklik/Height : 4 m

KAPASİTE / CAPACITY

Blok/Block : 11

TEKNİK EKİPMANLAR TECHNICAL EQUIPMENT

55" LCD Led TV

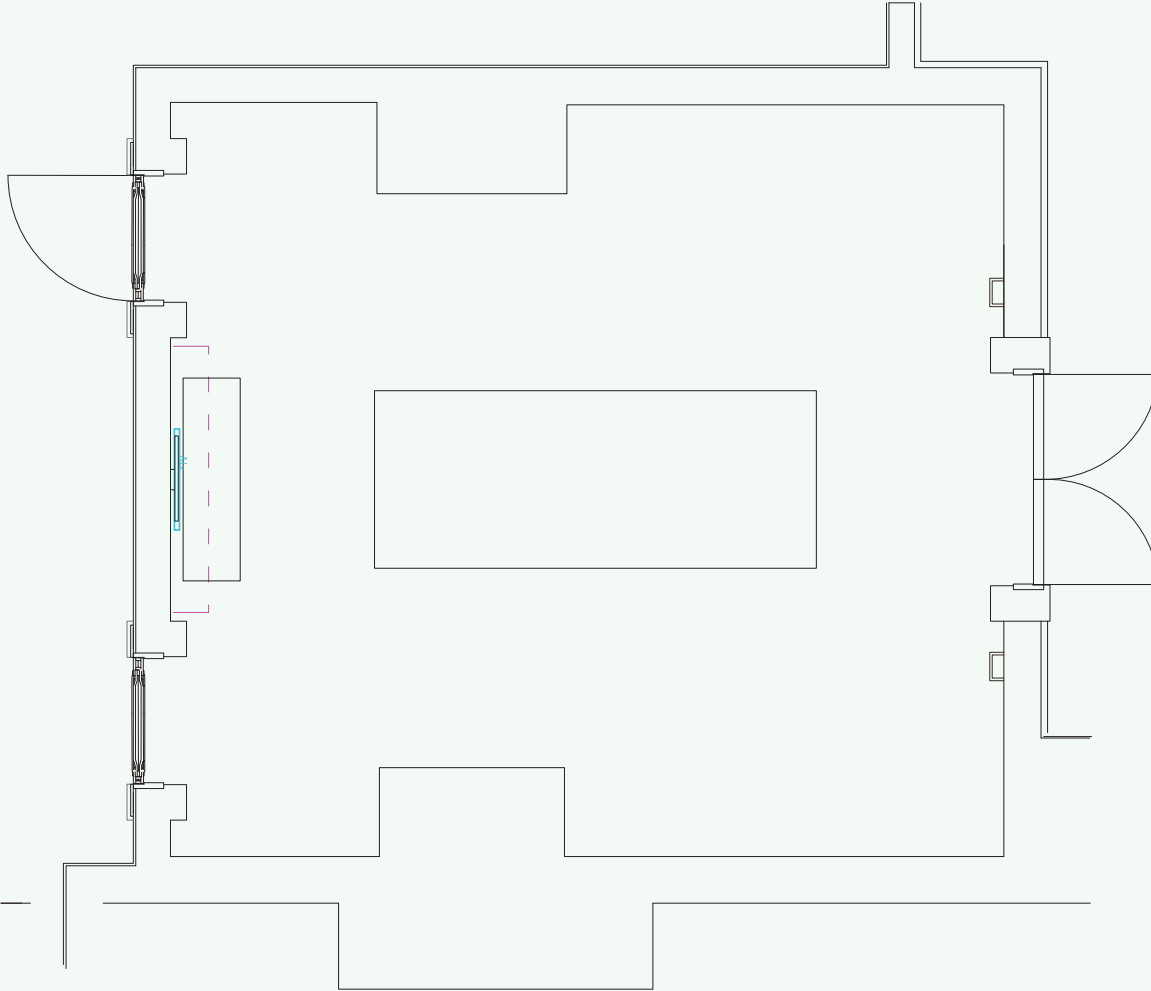
Gün Işığı Alıyor / Daylight



NİŞANTAŞI

CVK PARK BOSPHORUS HOTEL
İSTANBUL





NİŞANTAŞI

SALON ÖLÇÜLERİ/MEASURE

Alan/Area : 38 m²

Genişlik/Width : 6,78 m

Boy/Length : 5,93 m

Yükseklik/Height : 2,8 m

KAPASİTE / CAPACITY

Blok/Block : 7

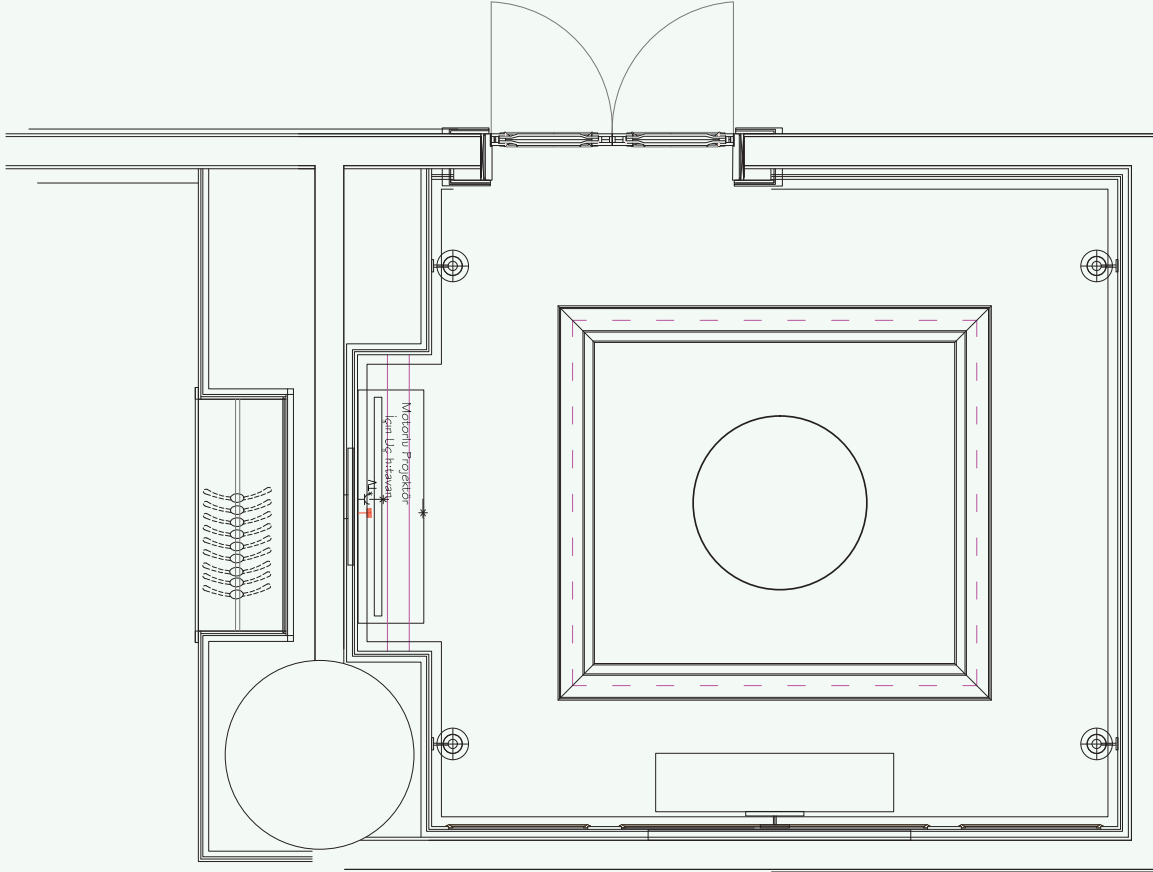
TEKNİK EKİPMANLAR TECHNICAL EQUIPMENT

55" LCD Led TV

Dijital Ekran / Digital Screen



GALATA



GALATA

SALON ÖLÇÜLERİ/MEASURE

Alan/Area : 25 m²

Genişlik/Width : 4,45 m

Boy/Length : 5,3 m

Yükseklik/Height : 2,8 m

KAPASİTE / CAPACITY

Banket/Banquet : 6

TEKNİK EKİPMANLAR TECHNICAL EQUIPMENT

55" LCD Led TV

1 Adet Dijital Ekran / 1 Digital Screen

GALATA FUAYE / GALATA FOYER

Alan/Area : 117 m²

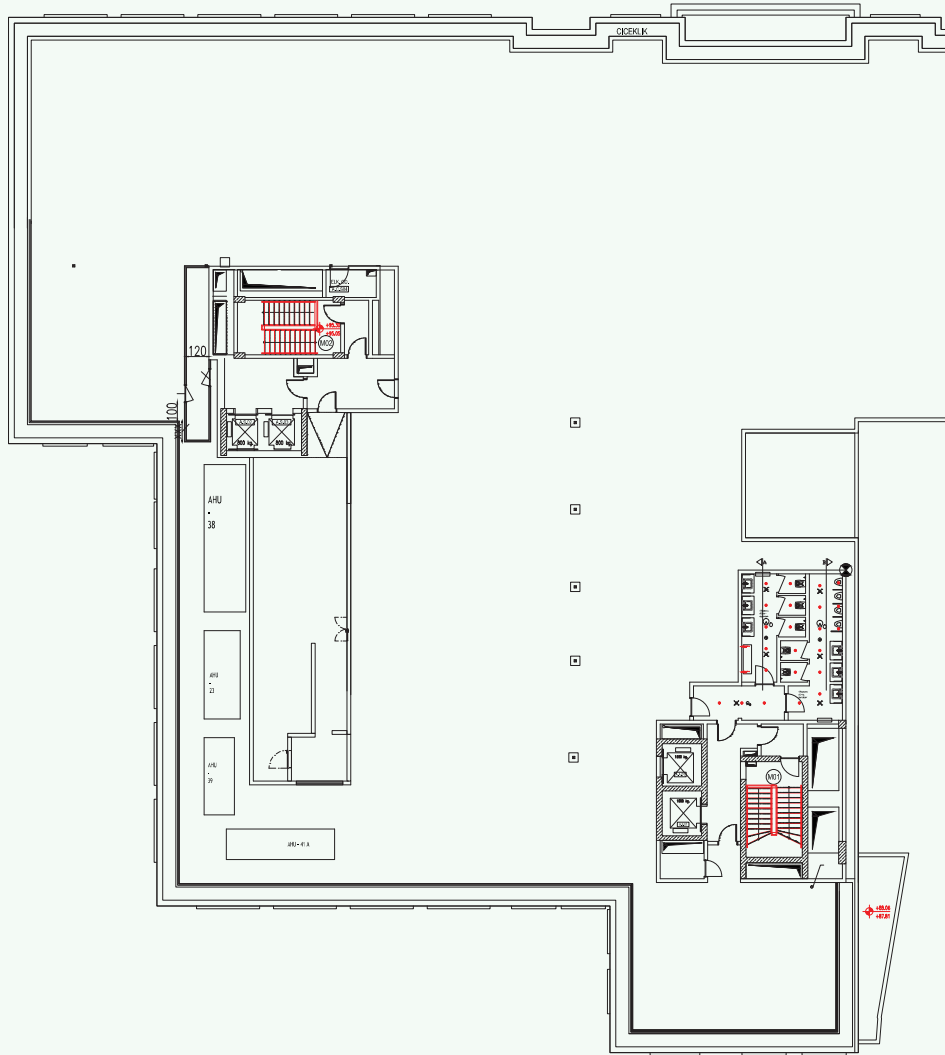


B O S P H O R U S T E R R A C E









BOSPHORUS TERRACE

SALON ÖLÇÜLERİ/MEASURE

Alan/Area	: 1080 m ²
Genişlik/Width	: 36 m
Boy/Length	: 30 m
Yükseklik/Height	: 4 m

TEKNİK EKİPMANLAR TECHNICAL EQUIPMENT

8 x 3 m (1.536 x 576 piksel) LED Ekran/
8 x 3 m (1.536 x 576 px) LED screen

2 Ayaklı Motorlu Truss / 2 feet mounted electrical truss

4 Ayaklı Motorlu Truss / 4 feet mounted electrical truss

Boğaz Manzarası / Bosphorus View

BOSPHORUS TERRACE FUAYE/ BOSPHORUS TERRACE FOYER

SALON ÖLÇÜLERİ/MEASURE

Alan/Area	: 225 m ²
Genişlik/Width	: 15 m
Boy/Length	: 15 m
Yükseklik/Height	: 4 m

MEETING AND ORGANIZATION HALLS

Floor	Name of Room	M ²	Theater	Class	Block	U-Shape	Cabaret	Banquet	Reception
Terrace Floor	Bosphorus Terrace	1080							
	Bosphorus Terrace Foyer	225							
Lobby Floor	Ayaspaşa	40			11				
2nd Floor	Sıraselviler	282	200	120	40	50	160	200	250
	Sıraselviler I	141	80	60	18	21	56	70	100
	Sıraselviler II	141	80	60	18	21	56	70	100
	Sıraselviler Foyer	190							200
1st Floor	Maçka	137	80	48	30	36	48	64	80
	Maçka I	65	40	18	12	15	24	30	40
	Maçka II	72	40	18	12	15	24	30	40
	Maçka Foyer	77							70
	Nişantaşı	38			7				
B Floor	İstanbul Ballroom	805	800 - 900	350	60	75	300	500	800
	İstanbul I	525	450	138	42	51	184	230	525
	İstanbul II	275	170	90	42	45	104	130	275
	İstanbul Foyer	380							800
	Galata	25			6				
	Beyoğlu	95	60	42	30	33	40	50	90
	Pera	78	50	30	12	15	24	30	75
	- 4 Floor Foyer	117							
	Tophane	70	42	24	18	21	32	40	70
	Cihangir	55	36	24	18	15	24	30	50
	Asmalımescit I	60	36	24	18	21	24	30	55
	Asmalımescit II	40			11				

TEŞEKKÜRLER
THANK YOU