



THE TORCH

DOHA

DISCOVER THE NEW ERA OF
QATARI HOSPITALITY

THE TORCH DOHA

At 300 m high, with a 360 panoramic view across Doha, our flagship property is a beacon of personalized luxury and well-being.

Modern rooms with our signature iPad control system provides guests with a convenience and customizable service.

Three signature restaurants, including Three Sixty, Doha's only revolving restaurant, we pride ourselves on being on the forefront of Qatari hospitality innovations.

With a cantilevered swimming pool boasting panoramic city views, a fitness space, and a selection of treatment rooms, The Torch Doha has thoughtfully catered to every wellness and fitness need.



ACCOMODATION

163	Rooms and suites, including:
132	Deluxe Room
24	Junior Suite
4	Executive Suite
3	Diplomatic Suite



LOCATION

The Torch Doha is situated on Al Waab Street, 25 minutes away from the Hamad International Airport and 20 minutes from the City Centre.

The guest has private access to Villaggio, Doha's largest shopping mall, and many of the health and fitness facilities within Aspire Zone.



RESTAURANT AND LOUNGES

THREE SIXTY

Perched on the 47th floor, Three Sixty is an extraordinary revolving restaurant that exudes unparalleled charm. A must-visit for every guest, Three Sixty promises an exquisite culinary experience paired with a breathtaking panoramic view.

Cuisine: Mediterranean

Opening hours: Sunday-Thursday: 3:00 pm-10:30 pm

Friday-Saturday: 12:30 pm - 10:30 pm (Last Order)



Nestled on the 21st floor and overlooking Aspire Park, Torch Tea Garden is a haven for tea enthusiasts. It serves an exclusive selection of teas, mocktails, fresh salads, sandwiches, classic cheese fondue, miniature sweets, and homemade snacks.

Cuisine: International

Opening hours: 03:00 pm - 10:30 pm (Last Order)

FLYING CARPET

Our all-day dining restaurant, Flying Carpet, seamlessly blends modern design with live cooking showcasing international cuisine.

Cuisine: International | Arabic

Opening hours: Breakfast: 7:00 am - 10:30 am |

Lunch: 12:00 pm - 3:30 pm

Dinner: 7:00 pm - 10:30 pm (Last Order)



Kufic, a trendy lounge exquisitely designed and bathed in natural sunlight, provides a serene escape from the bustling city. It's an ideal spot for business meetings or social gatherings.

Cuisine: International

Opening hours: 07:00 am - 10:30 pm (Last Order)

MEETINGS AND EVENTS

ASPIRE BALLROOM

Aspire Ballroom offers a signature combination of modern and unique design accommodating up to 200 guests with flexible features and settings. It is conveniently located on the Mezzanine 1 level with separate driveway and parking.



MADAR

MADAR is a medium size conference room with natural daylight and panoramic views. Equipped with advanced technology capabilities such as a 103" smart TV, video conferencing facilities, LCD and all required AV equipment.

MANAAR 1 & 2

For small business events the preferred choices are the two boardrooms MANAAR 1 and MANAAR 2 which are located at Mezzanine 2 level. They both offer a private and professional atmosphere for up to 12 business partners.

TORCH BALLROOM

Located at the heart of Aspire Zone with natural daylight and magnificent atmosphere. The venue is perfectly designed with stunning candelabras and caters for a maximum of 500 guests.



Function Rooms	Capacity								Dimensions			
	Banquet	Classroom	Cocktail	Theatre	Half-Moon	U-shape	Boardroom	Hollow Square	Size in metres (L x W)	Height (m)	Area (sqm)	Area (sqft)
Aspire Ballroom	200	120	300	300	160	N/A	N/A	N/A	38.9 x 11.2	3.9	432	4650
Aspire Ballroom 1	50	40	70	80	40	24	20	30	11.5 x 11.2	3.9	128	1378
Aspire Ballroom 2	70	50	100	100	56	30	20	30	14.2 x 12.7	3.9	180	1937
Aspire Ballroom 3	50	40	70	80	40	24	20	30	10.4 x 11.2	3.9	128	1378
Madar	60	50	70	90	42	30	26	34	16.8 X 9.7	2.6	143	1539
Manaar 1	N/A	N/A	N/A	N/A	N/A	12	12	12	8.1 x 5.3	2.6	41	441
Manaar 2	N/A	N/A	N/A	N/A	N/A	12	12	12	6.9 x 5.9	2.6	36	387
Executive	30	24	30	40	24	21	20	N/A	10.5 X6.2	2.6	65	700
Torch Ballroom	450	N/A	750	650	350	120	100	120	39 x 24	6	913	9828
Torch Ballroom 1	150	90	120	160	105	48	54	60	12 x 24	6	288	3100
Torch Ballroom 2	200	120	150	280	140	48	54	60	15 x 24	6	360	3875
Torch Ballroom 3	150	90	120	160	105	48	54	60	12 x 24	6	288	3100

ROOMS AND SUITES

DELUXE ROOM

Elegantly contemporary, our Deluxe Rooms at The Torch Doha span 42 square metres and feature a cutting-edge work area equipped with an iPad-based In-Room Solution, an interactive 43-inch LED TV, and in-room Wi-Fi.

No. of Rooms: 132

Bed type: King & Twin



JUNIOR SUITE

Our Junior Suites are sophisticated sanctuaries, generously sized at 76 square metres, showcasing a capacious living area alongside a king-sized bedroom. The suite boasts an iPad-based In-Room Solution for customised in-room control, an interactive 43-inch LCD TV, and complimentary Wi-Fi.

No. of Rooms: 24

Bed type: King & Twin



EXECUTIVE SUITE

Boasting magnificent views of Aspire Zone and a modern interior, our Executive Suites offer 115 square metres of living space, including two master bedrooms or one master and one twin bedroom, two bathrooms, a living area, and a pantry.

No. of Rooms: 4

Bed type: 2 Bedroom Suite



DIPLOMATIC SUITE

Perched atop The Torch Doha, our Diplomatic Suites occupy the uppermost floors, affording panoramic views of Aspire Zone. These expansive suites encompass a spacious living room, a dining area, and either one or two king-sized bedrooms. Designed for the utmost privacy, the suites feature a separate reception area and a private elevator.

No. of Rooms: 3

Bed type: 1 & 2 Bedroom Suite



ROOMS & SUITE FACILITIES

- Ipad in-room sloution
- Living room
- In-room coffee / tea facilities
- Mini bar
- Bathroom, rain shower
- Complimentary Wi-Fi
- Interactive TV
- Safety deposit box

HOTEL SERVICES

- 24 hours in-room dining
- Valet Parking Services
- Complimentary Wi-Fi in all rooms & public area

RECREATIONAL SERVICES



POOL

The cantilevered swimming pool on the 19th floor is the only one of its kind in Qatar, offering stunning views of the city.

Timing: 7:00 am to 7:00 pm



SPA

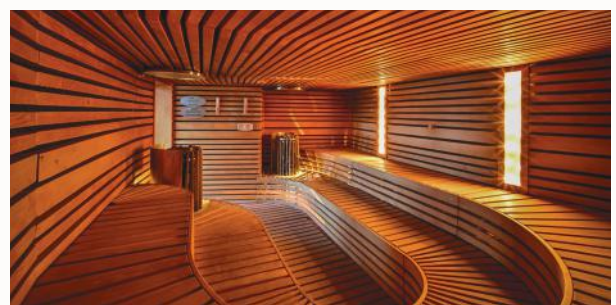
Outstanding spa services and superb fitness facilities with separate floors for male & female.

Timing: 11:00 am to 9:00 pm

STEAM & SAUNA

Featuring steam and sauna with modern finishes, and jet showers with various setups and foot massage areas.

Timing: 7:00 am to 9:00 pm



GYM

Experience an exceptional retreat in our state-of-the-art Health Club in Doha. Our gym in Doha sets the standard for exceptional service and cutting-edge technology, equipped to help you achieve your fitness goals and embrace a healthier lifestyle.

Timing: 7:00 am to 9:00 pm | 24 hours access for in-house guests and health club members

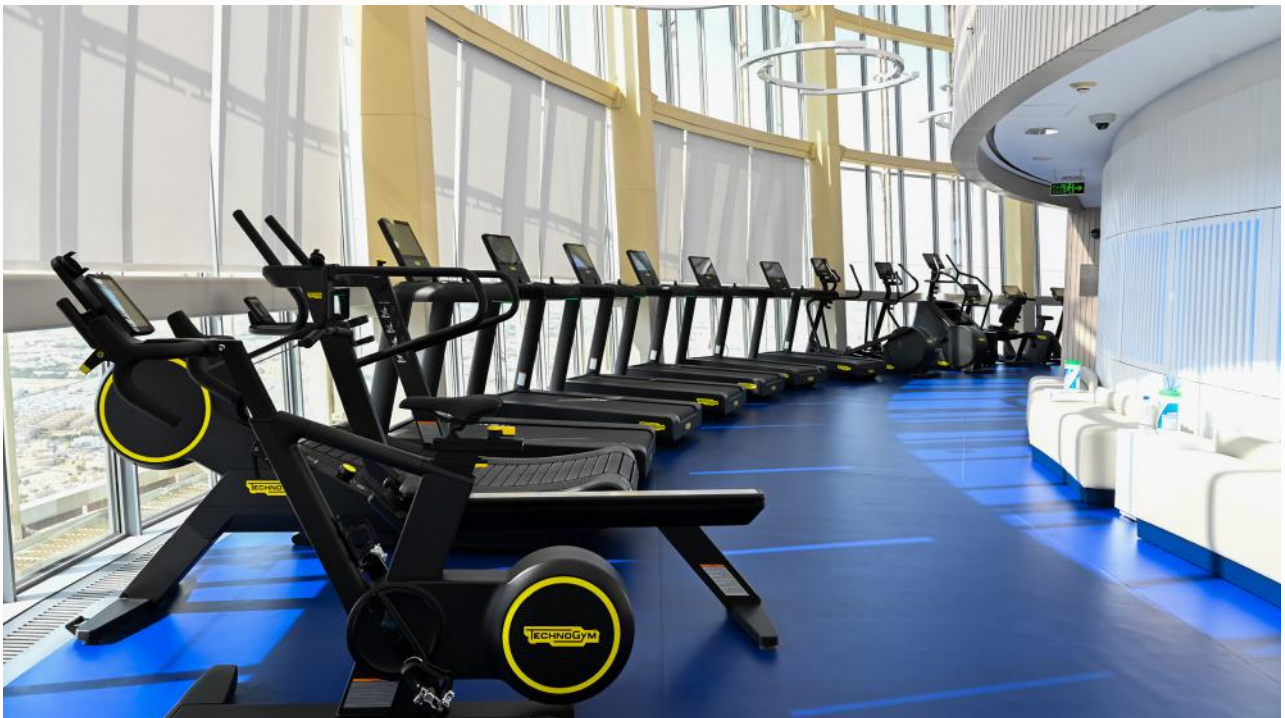


THE TORCH CLUB

Welcome to The Torch Club Premium Experience Redefined in the Heart of Doha

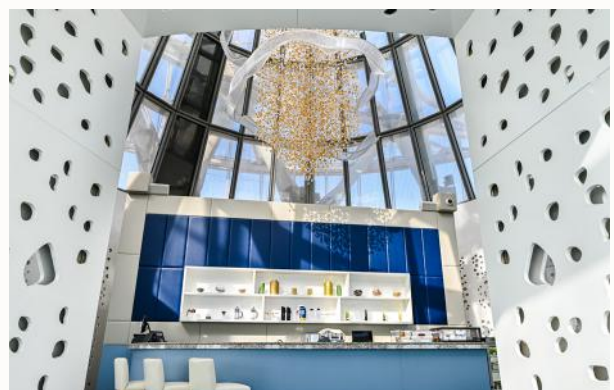
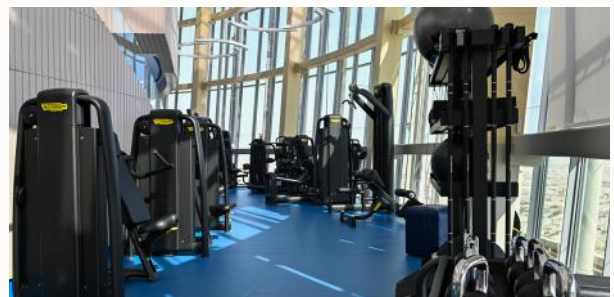
Where innovation, elegance and personalized care come together to elevate your lifestyle

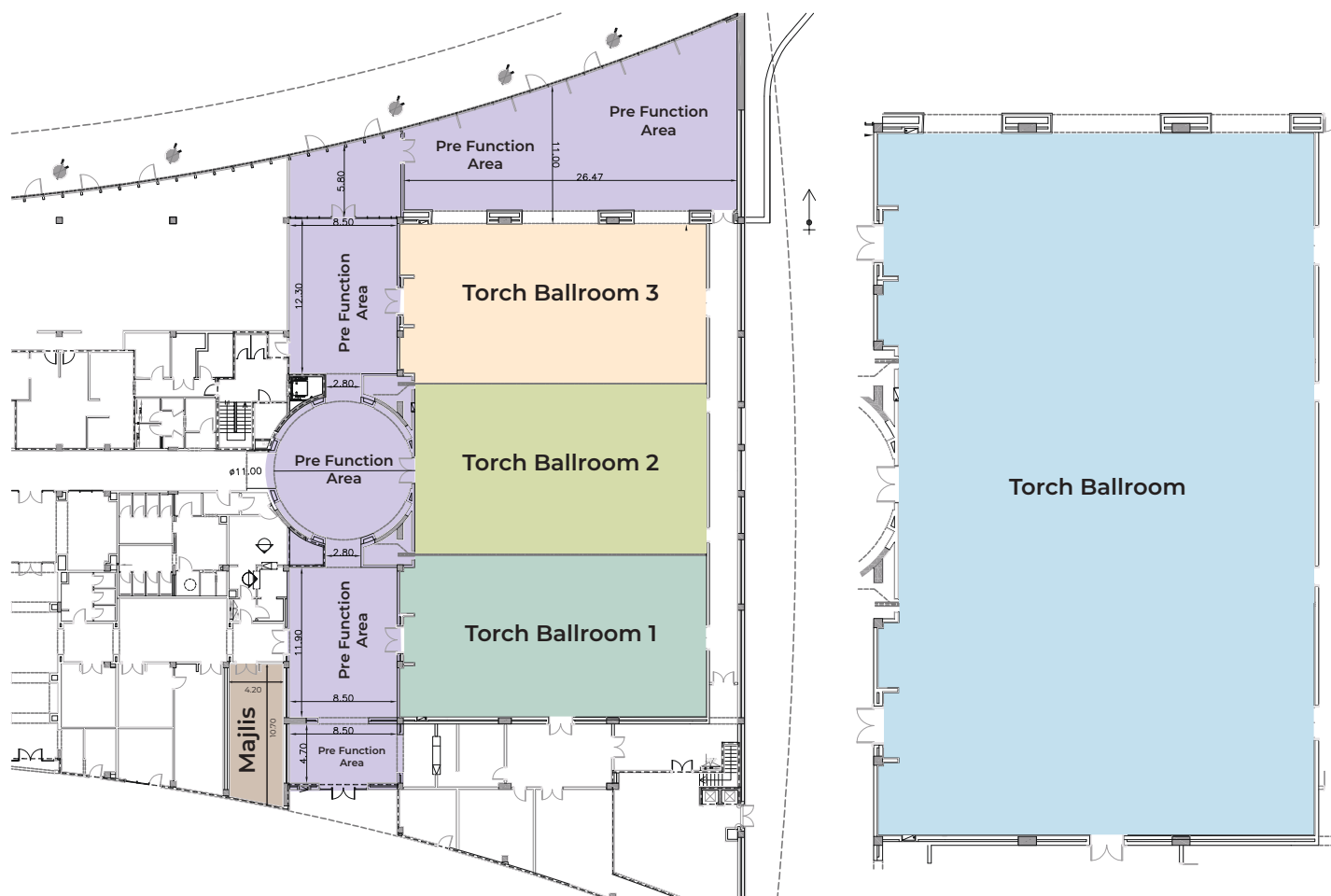
Located on the 50th and 51st floors of The Torch Doha, The Torch Club is a members-only premium fitness sanctuary blending cutting-edge technology with Qatari hospitality. Guinness record as the "world's highest gym in a building," it offers panoramic city views, top-tier Technogym equipment, and culturally attuned wellness services, including body composition analysis and a therapeutic salt room.



KEY FEATURES

- Recognized By Guinness World Records as The Highest Gym in a Building
- An Iconic Sky-High Ambiance with 360° Views
- Rejuvenating Salt Room Therapy
- Fully Integrated Technogym Ecosystem
- Advanced Techno Check-Up Biometric Assessment
- Wellness Lounge 51
- Culturally Attuned Environment





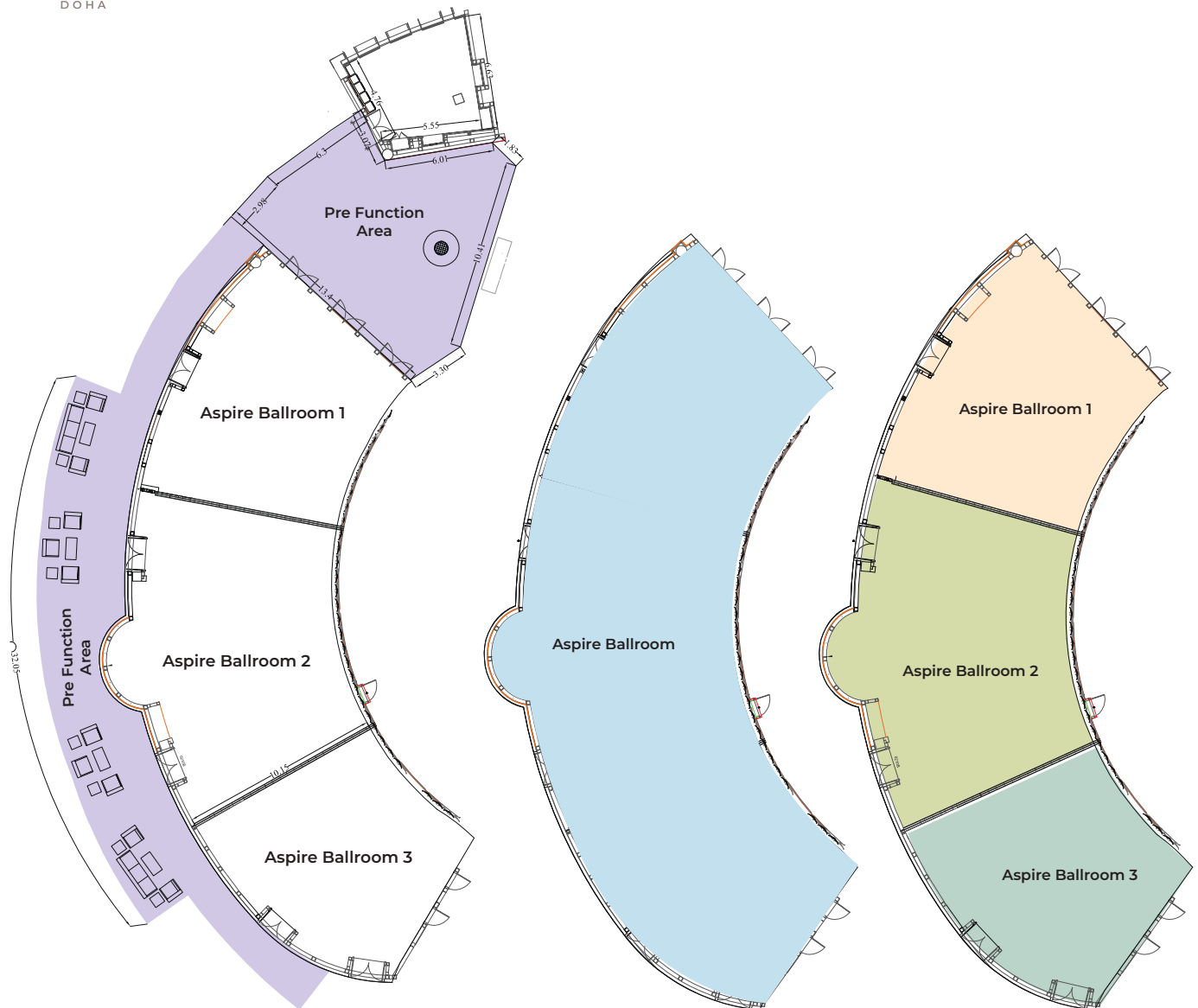
Function Rooms	Capacity								Dimensions			
	Banquet	Classroom	Cocktail	Theatre	Half-Moon	U-shape	Boardroom	Hollow Square	Size in metres (L x W)	Height (m)	Area (sqm)	Area (sqft)
Torch Ballroom	450	N/A	750	650	350	120	100	120	39 x 24	6	913	9828
Torch Ballroom 1	150	90	120	160	105	48	54	60	12 x 24	6	288	3100
Torch Ballroom 2	200	120	150	280	140	48	54	60	15 x 24	6	360	3875
Torch Ballroom 3	150	90	120	160	105	48	54	60	12 x 24	6	288	3100
Torch Majlis	N/A	N/A	N/A	N/A	N/A	N/A	12	N/A	4.20 X 10.70	3	45	485

THE TORCH DOHA

Al Waab Street, Aspire Zone, P.O. Box 23833 Doha, Qatar

T: +974 4446 5600 | E: info@thetorchdoha.com | reservation@thetorchdoha.com

thetorchdoha.com.qa



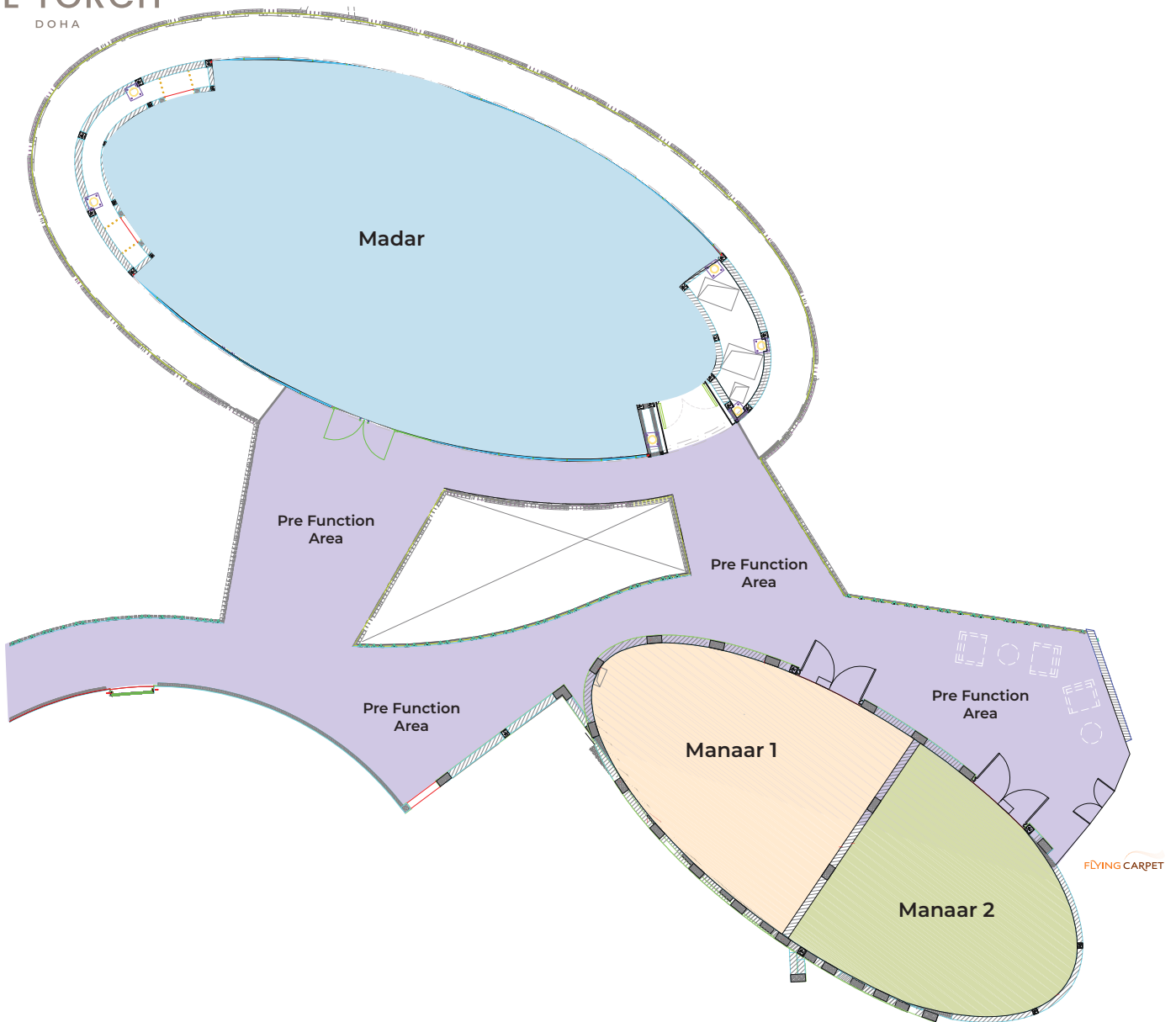
Function Rooms	Capacity								Dimensions			
	Banquet	Classroom	Cocktail	Theatre	Half-Moon	U-shape	Boardroom	Hollow Square	Size in metres (L x W)	Height (m)	Area (sqm)	Area (sqft)
Aspire Ballroom	200	120	300	300	160	N/A	N/A	N/A	38.9 x 11.2	3.9	432	4650
Aspire Ballroom 1	50	40	70	80	40	24	20	30	11.5 x 11.2	3.9	128	1378
Aspire Ballroom 2	70	50	100	100	56	30	20	30	14.2 x 12.7	3.9	180	1937
Aspire Ballroom 3	50	40	70	80	40	24	20	30	10.4 x 11.2	3.9	128	1378

THE TORCH DOHA

Al Waab Street, Aspire Zone, P.O. Box 23833 Doha, Qatar

T: +974 4446 5600 | E: info@thetorchdoha.com | reservation@thetorchdoha.com

thetorchdoha.com.qa



Function Rooms	Capacity								Dimensions			
	Banquet	Classroom	Cocktail	Theatre	Half-Moon	U-shape	Boardroom	Hollow Square	Size in metres (L x W)	Height (m)	Area (sqm)	Area (sqft)
Madar	60	50	70	90	42	30	26	34	16.8 X 9.7	2.6	143	1539
Manaar 1	N/A	N/A	N/A	N/A	N/A	12	12	12	8.1 x 5.3	2.6	41	441
Manaar 2	N/A	N/A	N/A	N/A	N/A	12	12	12	6.9 x 5.9	2.6	36	387

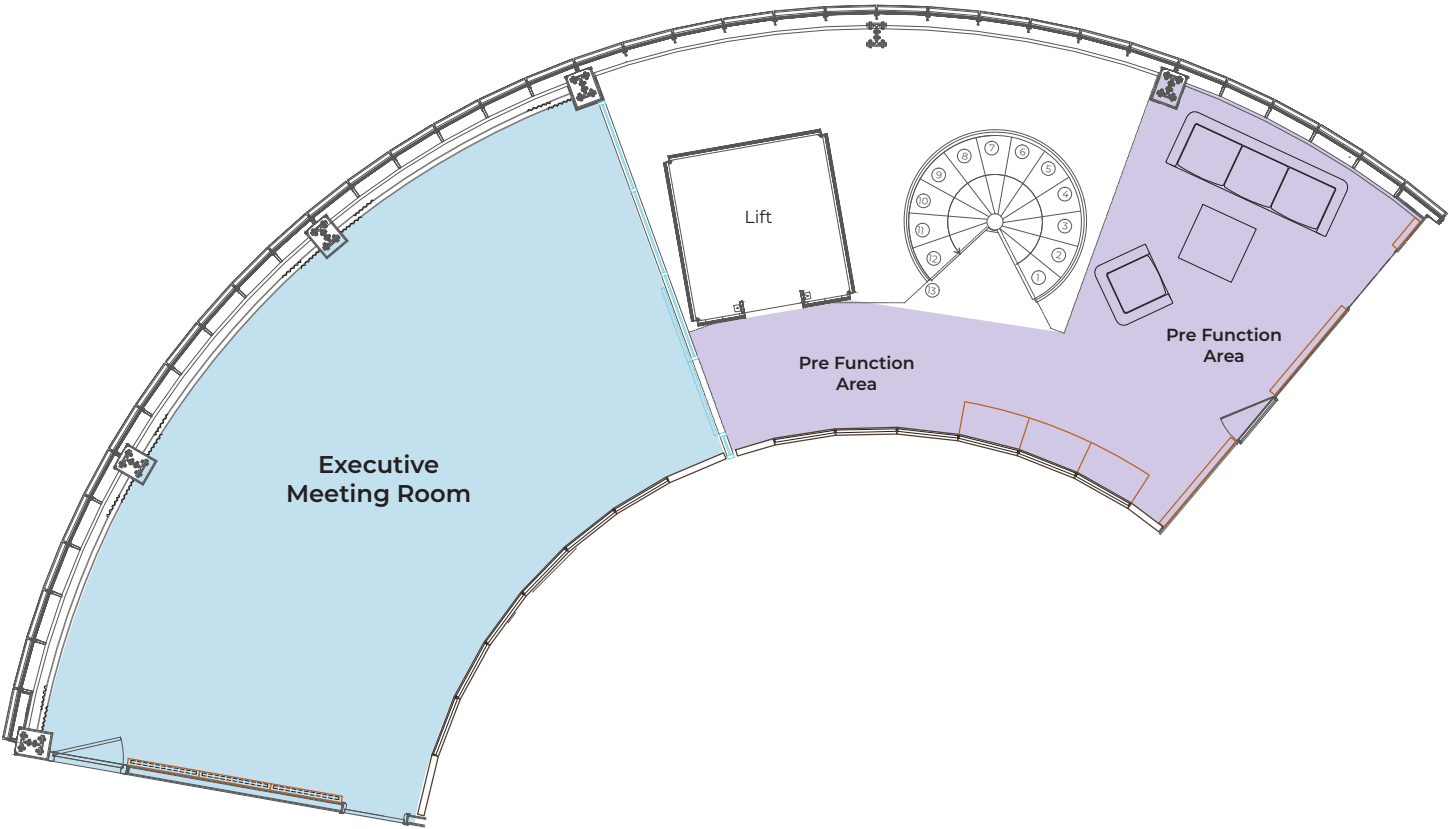
THE TORCH DOHA

Al Waab Street, Aspire Zone, P.O. Box 23833 Doha, Qatar

T: +974 4446 5600 | E: info@thetorchdoha.com | reservation@thetorchdoha.com

thetorchdoha.com.qa

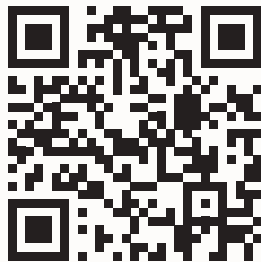
LEVEL 27 - EXECUTIVE MEETING ROOM



Function Rooms	Capacity								Dimensions			
	Banquet	Classroom	Cocktail	Theatre	Half-Moon	U-shape	Boardroom	Hollow Square	Size in metres (L x W)	Height (m)	Area (sqm)	Area (sqft)
Executive	30	24	30	40	24	21	20	N/A	10.5 X6.2	2.6	65	700

THE TORCH DOHA

Al Waab Street, Aspire Zone, P.O. Box 23833 Doha, Qatar
T: +974 4446 5600 | E: info@thetorchdoha.com | reservation@thetorchdoha.com
thetorchdoha.com.qa



THE TORCH DOHA

Al Waab Street, Aspire Zone, P.O. Box 23833 Doha, Qatar

T: +974 4446 5600 | F: +974 4446 5661

E: info@thetorchdoha.com | reservation@thetorchdoha.com



[thetorchdoha](#)

thetorchdoha.com.qa