



The Rebirth of a Sydney icon

THE NEW SOFITEL SYDNEY WENTWORTH
COMING 2024

The Modern New Grand Entrance

The ground floor lobby will be welcoming and energetic, featuring a striking lighting feature that illuminates the way. Vibrant pockets of space will invite guests to enjoy a variety of experiences throughout the day.



Your Experience is Tailored to You

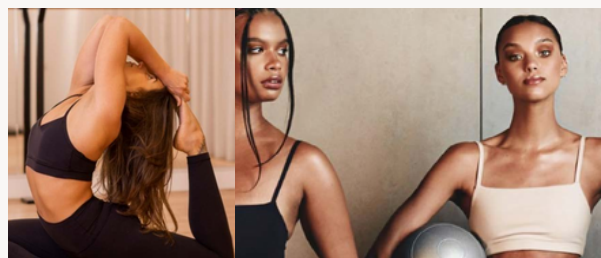
Discover our **436** rooms and suites that gracefully curve along the terrace, offering a unique blend of luxury and comfort. Our innovative technology will enhance your stay, ensuring a seamless and memorable experience.

Distinctive features

- Sofitel MyBed™ • Sustainable Balmain Paris amenities • LED smart TV
- Selected rooms & suites with Club Millésime access • Nespresso coffee machine • Luxurious marble bathrooms • Signature mini-bar & in-room dining.

Sofitel Club Millésime

An elevated, exclusive check-in experience, opening onto a tranquil and yet opulent space. Club members or those purchasing a day pass can relax, entertain or simply work from a warm eclectic lounge space with layers of soft furnishings & sophistication.



A brand new Health & Wellness Studio

Whether you're an early riser looking to energize or prefer winding down with weights, our exclusive new wellness oasis is designed for you. Step into our studio and leave the hustle and bustle behind. Our serene environment is crafted to promote relaxation and healing.



Sydney's new regular haunt to meet, eat and entertain

Sydney's new regular haunt to meet, eat and entertain with a new Australian seafood grill & bar. Celebrating the best of Australian seafood, and offering generous table sizes with a plush dining environment.

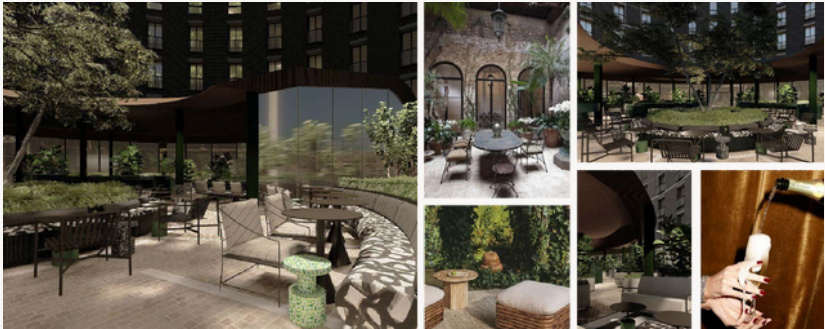


A new French Vietnamese feasting room

The interiors will transport you to a 1920s villa in Hanoi's Old Quarter. The dining room, seating 160, spills onto the lush terrace with capacity for an additional 60 diners. This design blends old-world elegance with the bright and colorful influence of the modern world.

A revival of Sydney's famous rooftop terrace

The exteriors will feature a rooftop terrace bar that draws inspiration from Vietnamese flavors, combined with classic French drinking styles. It will include an all-weather canopy to accommodate up to 250 guests throughout the year.



There are Meetings and there are Magnifique Meetings

15 elegant venues and a dedicated conference floor with an expansive foyer featuring spectacular heritage chandeliers and mirrored ceilings. Set in an ideal location, this impressive conference centre is one of the city's largest hotel conference and meeting venues.



Capacity Chart

	Area SQM	Dimension	Ceiling Height	Boardroom	Theatre Style	Classroom Style	Cabaret Style 8pax/round	Banquet Style 10pax/round	Maximum Round Tables	U-Shape 3 pax/trestle	Cocktail
LEVEL 3											
Wentworth Ballroom	629	22m x 28.6m	5.3m	-	750	468	432	540	54	-	750
Perth Room	198	22m x9m	5.3m	66	266	156	136	170	17	72	340
Sydney Room	229	22m x 10.4m	5.3m	66	304	156	144	180	18	72	360
Melbourne Room	198	22m x 9m	5.3m	66	266	156	136	170	17	72	340
Brisbane Room	227	16.8m x 13.5m	2.7m	5	20	81	96	180	18	5	200
Canberra Room	55	9.8m x 5.9m	2.7m	4	0	27	32	40	4	4	40
Level 3 Foyer	468	36m x 10.8m	2.7m	26	51	-	-	-	-	27	50
LEVEL 4											
Adelaide Room	165	20.9m x 7.9m	2.4m	58	14	66	8	100	1	65	140
Executive Boardroom	46	8m x 5.76m	2.4m	16	0 -	-	0	-	0	-	-
LEVEL 5											
Edwin Flack Room	57	10.07m x 5.7m	3.2m	30	50	33	32	40	4	30	50
Wentworth Room	41	7.45m x 5.7m	3.2m	18	35	21	16	20	2	18	30
James Cook Room	69	13.8m x 5m	3.2m	36	50	20	40	50	5	36	60
Velvet Room	59	9.15m x 6.5m	3.2m	12	20	-	24	20	2	-	30
LEVEL 8											
Wentworth Suite	100			10	-	-	-	-	-	-	15
Prestige Suite	51			6	-	-	-	-	-	-	-



61 - 101 Phillip St, Sydney, NSW 2000

T +61 (02) 9228 9188 E H3665@sofitel.com W sofitelsydney.com.au

