



The Williamsburg Hotel

Venue & Event Spaces

96 WYTHE AVE. BROOKLYN, NY, 11249





WELCOME

Located at the corner of North 10th Street & Wythe Ave, stands an eight-story Hotel that combines the perfect blend of the neighborhood's eclectic style with unmatched service & panaché. Each guest room is richly tiled-and-textured with authentic reclaimed materials, floor-to-ceiling windows and its own individual pizzazz.

ACCOMMODATIONS

- 145 Guest Rooms
- 24-Hour Front Desk
- Connecting Rooms
- Bar & Lounge
- Central Air Conditioning
- Complimentary Wi-Fi
- Pet Friendly
- Self-Service Parking Nearby
- Shopping & Public Transportation Nearby
- Wake-Up Call
- Free Wi-Fi
- Laundry Service Available





LOCATION

Fifty years ago, Williamsburg was a neighborhood of industry. Today, it is a bustling community full of creatives, dreamers, and doers meeting for a drink and making things happen. Located on Wythe Avenue and North 10th Street, The Williamsburg Hotel stands at the nexus of history and history in the making.

TRANSPORTATION

L Train: 7 Minute Walk

G Train: 10 Minute Walk

JMZ Train: 20 Minute Walk

East River Ferry: 8 Minute Walk

JFK Airport: 45 Minute Drive

La Guardia Airport: 30 Minute Drive

Newark Airport: 60 Minute Drive





PLANNING

Event Inclusions

STAFFING

- 1 bartender per 50 guests
- 1 server per 15 for plated meals
- 1 server per 20 for buffet or family style meals

FURNITURE

- 60 in. round tables
- 6 ft. rectangular tables
- 8 ft. rectangular tables
- Black Chiavari chairs

TABLEWARE

- White ceramic plateware
- Glassware
- Silverware
- White floor-length table linens
- White linen napkins
- Accent candles







VENUES

Ballroom

6,550 SQ. FT.

Up to 300 guests for sit down dinner

Up to 250 guests for dinner and dancing

Up to 400 guests for theatre or reception style

TWH Restaurant

1,250 SQ. FT.

Up to 25 guests for family style dinner

Lobby Bar

3,000 SQ. FT.

Up to 100 guests for reception style (semi-private)





VENUES

Outdoor Patio

1,050 SQ. FT.

Up to 30 guests for terrace seating

Up to 50 guests for reception style



Mirror Bar

1,600 SQ. FT.

Up to 75 guests for sit down dinner or meetings

Up to 120 guests theatre or reception style



The WaterTower

960 SQ. FT.

Up to 28 guests for sit down dinner or meetings

Up to 70 guests for reception style





VENUES

Rooftop

10,000 SQ. FT.

Up to 300 guest reception style

Up to 150 guests for semi-private reservations





BALLROOM

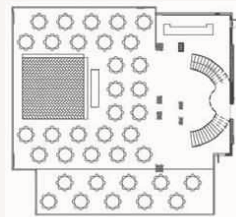
Your special event deserves the opulence of our immaculate Ballroom, an elegantly dynamic space featuring 30-foot ceilings, gleaming chandeliers, and brilliant marble floors. Perfect for weddings, conferences, trade shows and more. The Ballroom is a versatile and flexible space that can be transformed to bring any vision to life.

6,550 SQ. FEET

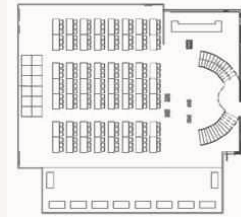




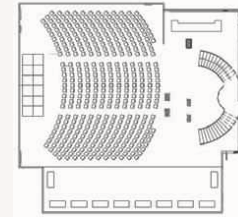
Ballroom Configurations



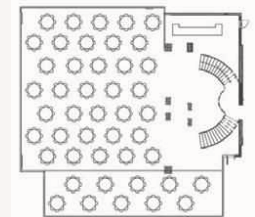
**DINNER & DANCING
UP TO 250**



**CLASSROOM-STYLE
UP TO 170**



**MEETINGS, KEYNOTES
UP TO 400**



**SEATED DINNER
UP TO 300**



TWH RESTAURANT

Come check out our 50-seat restaurant, where we celebrate locally sourced veggies, roots, and herbs. Our chef, Alberto Gomez, has crafted a menu that puts fresh, innovative, and seasonal fare front and center. It's the perfect spot for a casual yet elegant dining experience, where you can appreciate the benefits of eating natural food while enjoying some seriously tasty food & drink.

1,250 SQ. FEET



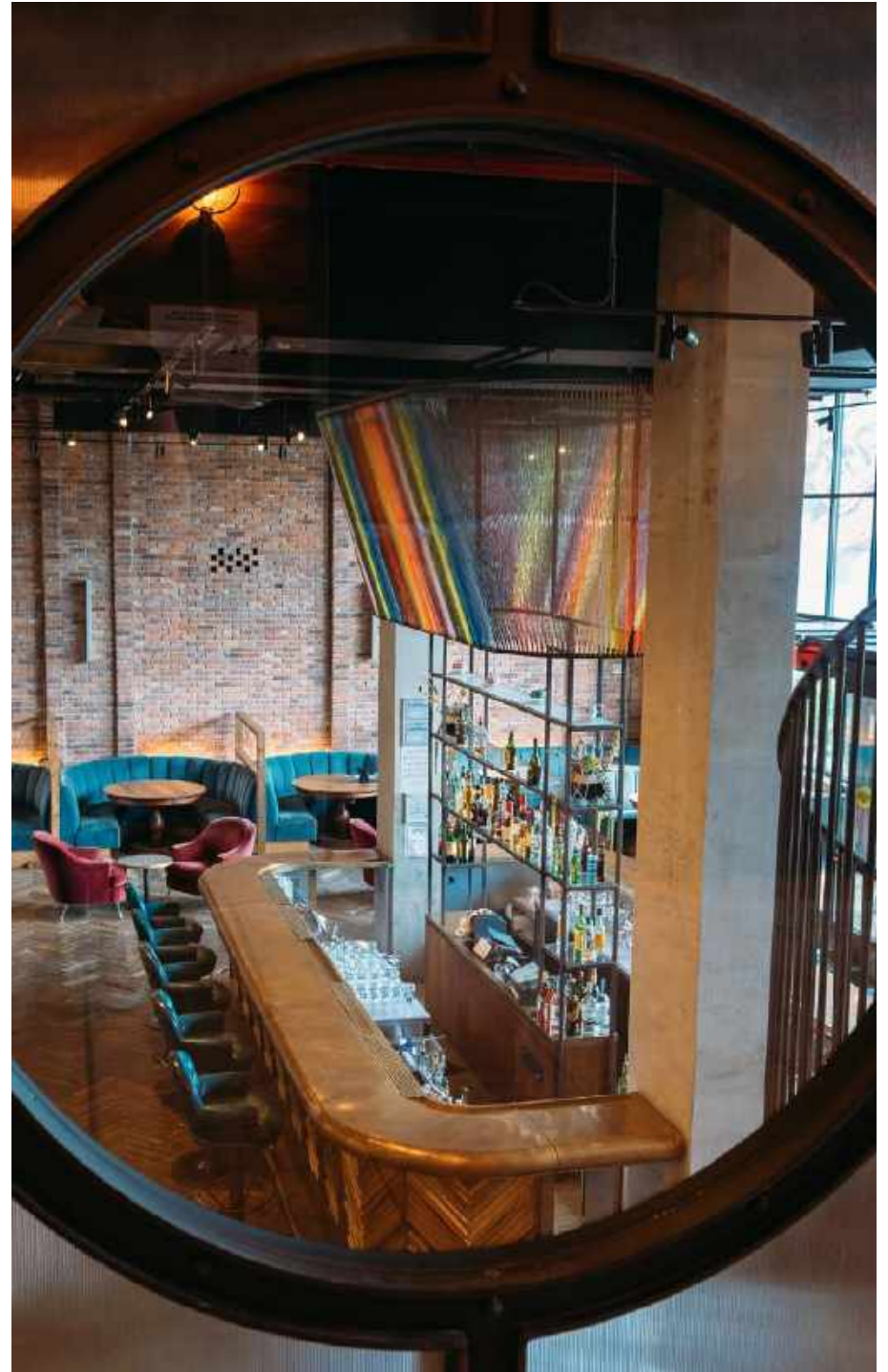


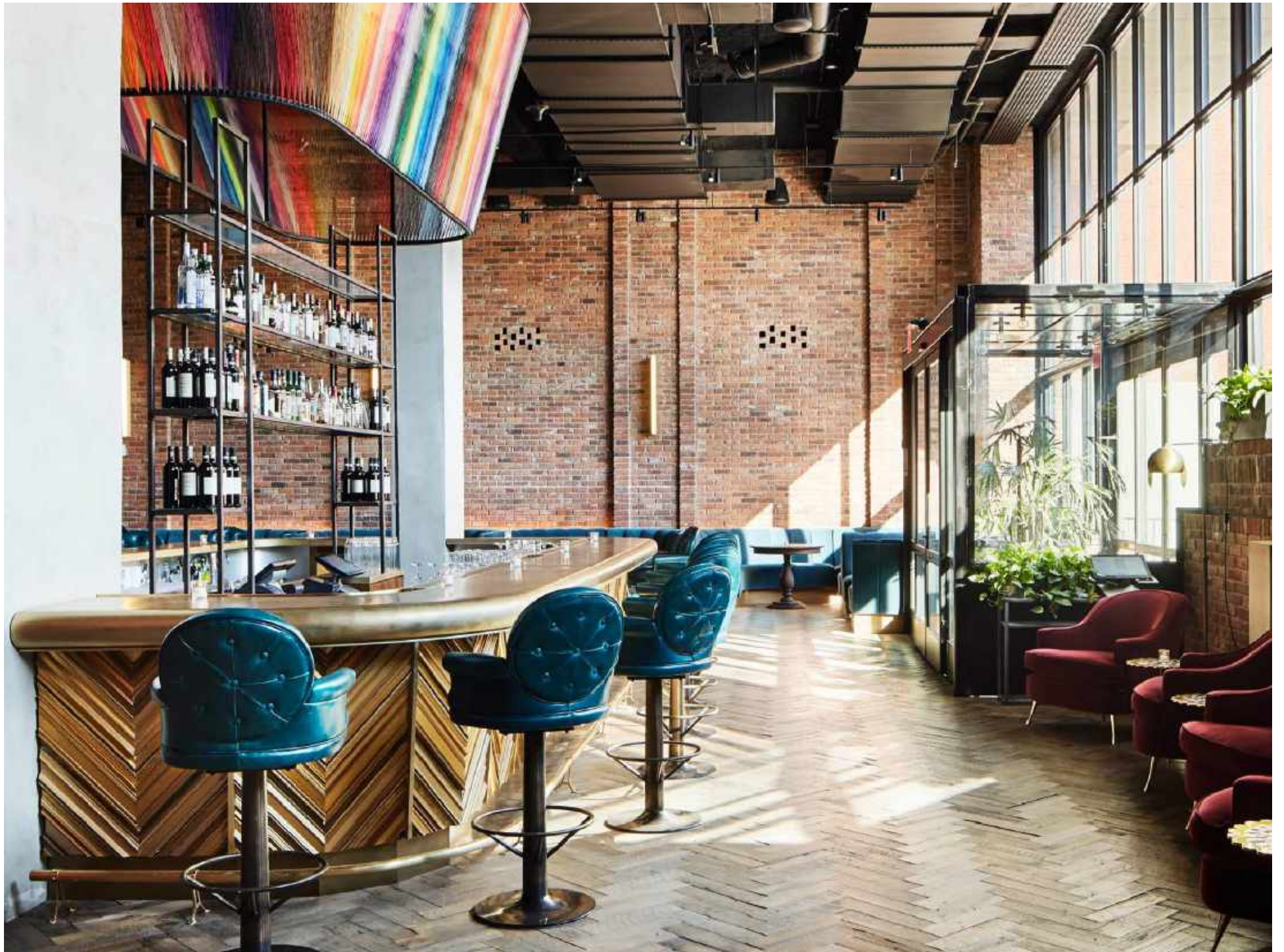


THE LOBBY BAR

The Lobby Bar corners the market on playful atmosphere and serene sophistication. Featuring local street artist Eric Reiger's colorful installation, reclaimed hardwood floors, and exposed industrial detailing, the Lobby Bar is perfect for anything from intimate cocktails to lavish events.

3,000 SQ. FEET







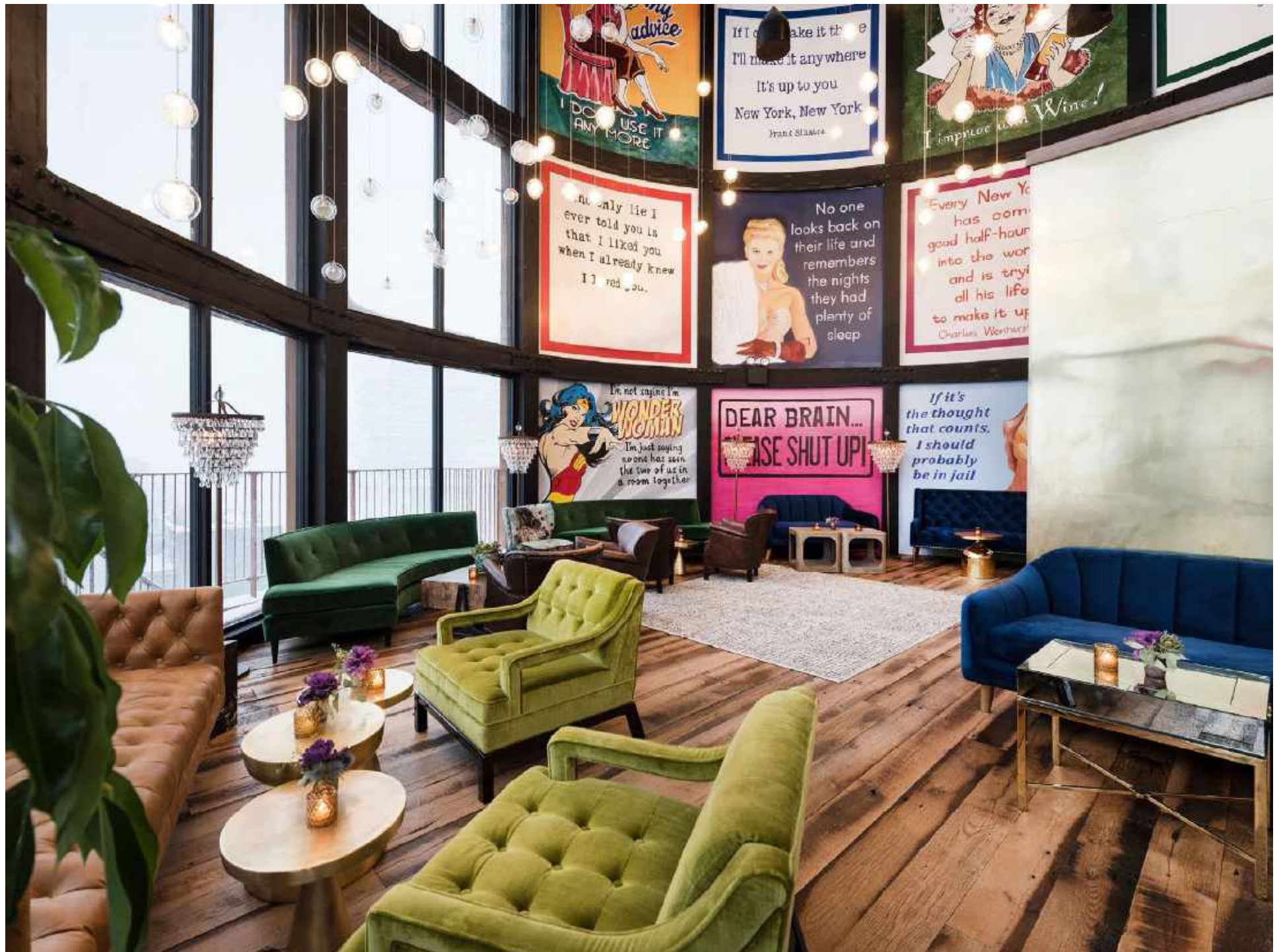


THE WATER TOWER

Experience the iconic Manhattan skyline views from our one-of-a-kind venue in the sky. Vintage-style murals, velvet sofas, and steel-encased, floor-to-ceiling windows make a unique setting for intimate celebrations and meetings. Don't miss out on the 360° terrace for a view of Brooklyn, too!

960 SQ. FEET







OUTDOOR PATIO

The Outdoor Patio is an open courtyard with built-in seating and beautiful landscaped surroundings.

Offering casual get togethers, outdoor dining, and receptions- the Outdoor Patio is a great space to enjoy the fresh air and the sights of vibrant Wythe Ave.

1,050 SQ. FEET





MIRROR BAR

The Mirror Bar, a hidden gem in The Williamsburg Hotel, is an intimate and chic enclave featuring 1,600 square feet of peaceful ambiance graced with modern design details. Event space by day and speak-easy bar by night, the Mirror Bar is an unconventional venue perfect for meetings, dinners, and celebrations.

1,600 SQ. FEET

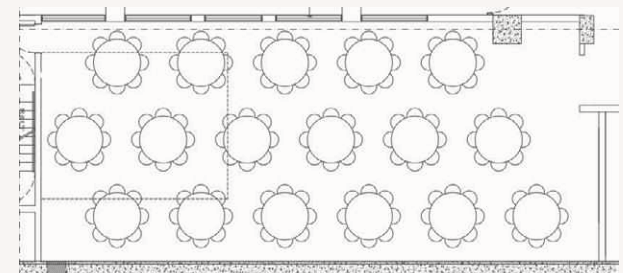




Mirror Bar Configurations



**UP TO 120 GUESTS FOR THEATRE OR
RECEPTION STYLE**



**UP TO 75 GUESTS FOR SIT
DOWN DINNER OR MEETINGS**

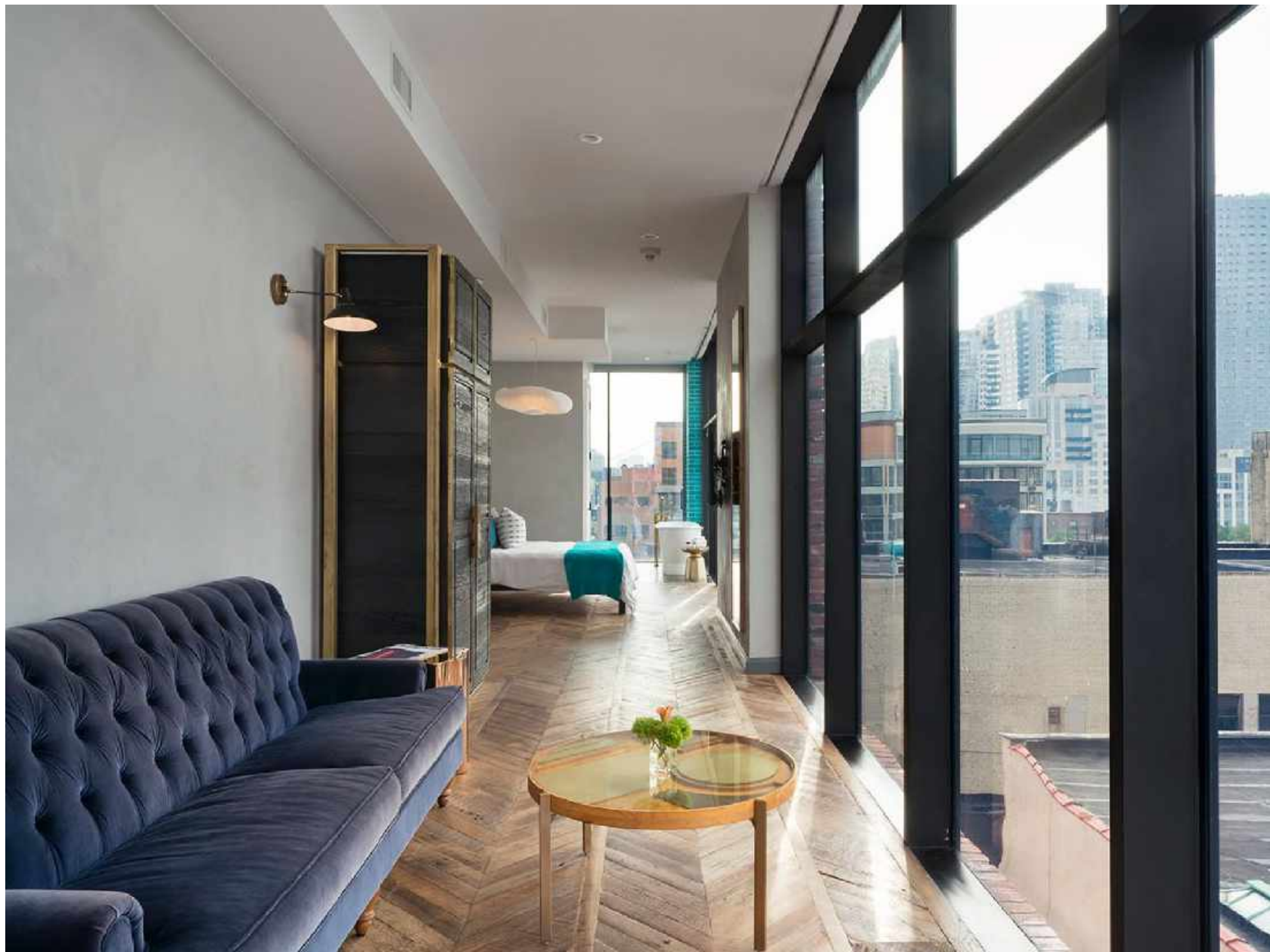


SKYLINE SUITE

The Skyline Suites are located on the west side of the Hotel, overlooking the East River. The floor to ceiling windows give an unobstructed panoramic view of the city skyline. The Skyline Suite is perfect for intimate gatherings such as bridal parties or meetings of up to 10 guests.

550 SQ. FEET



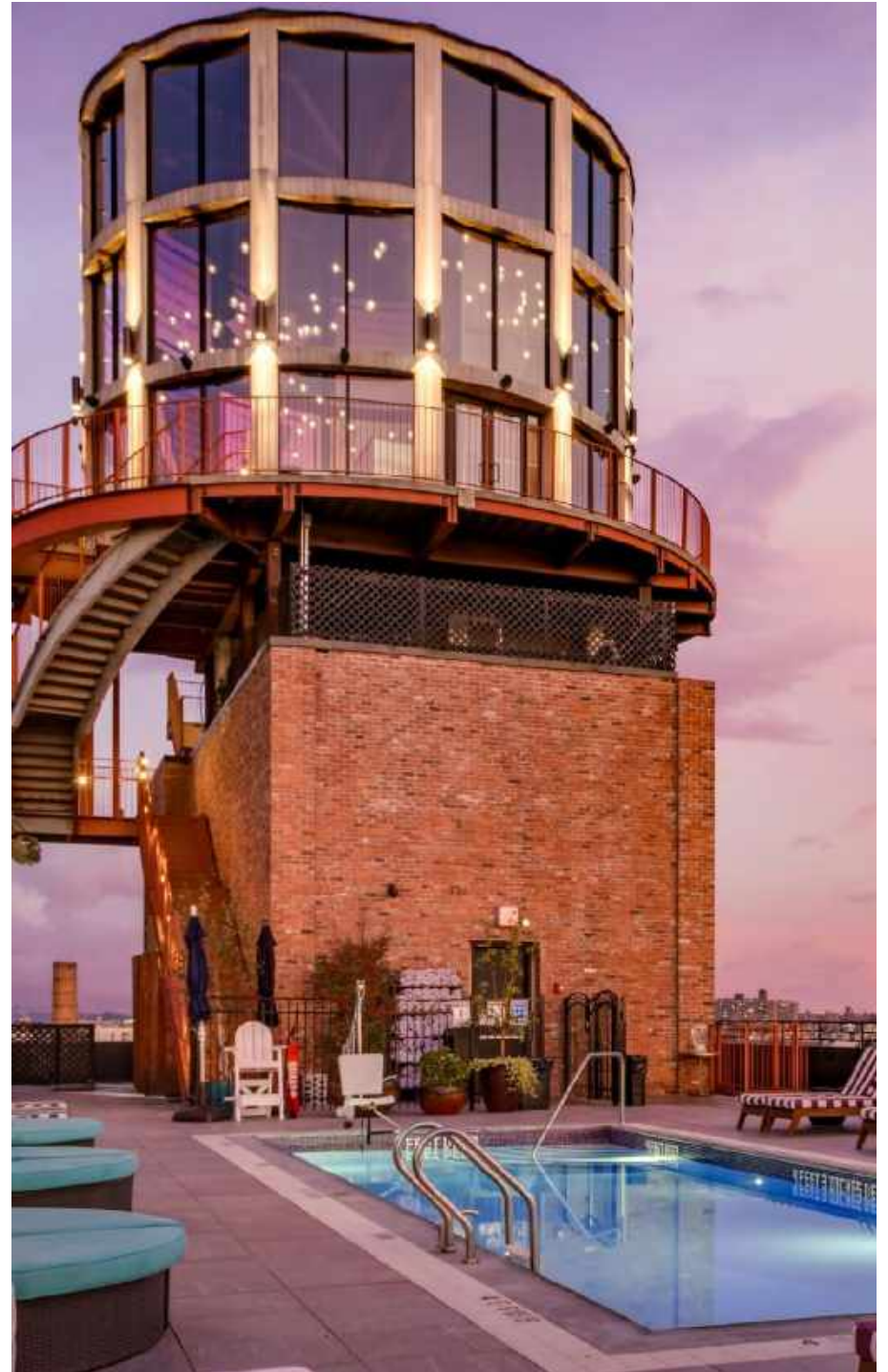




ROOFTOP

Our rooftop pool and lounge is the ultimate spot for taking in the views of NYC. With alfresco dining and delicious cocktails poolside, you'll feel like you're on top of the world. And when the sun goes down, join us for music and drinks or host your next happy hour, birthday party, or celebration- there's nothing else like it in the neighborhood!

10,000 SQ. FEET







Contact Us

**96 WYTHE AVE.
BROOKLYN, NY 11249**

**718.362.8100
EVENTS@THEWILLIAMSBURGHOTEL.COM**