



NITA LAKE LODGE

RESORT & SPA

NITA SEASON PASS PACKAGE
2025/26

SEASON PASS PACKAGE

2025/26

The Nita Season Pass is a multi-night package, pre-paid at the beginning of the season. It gives you unbeatable savings on your room rate for multiple stays throughout winter.

The Season Pass is available in **10**, **20** or even **30**-night packs. In addition, it provides exclusive perks and benefits for pass holders leaving you more time to plan your Whistler adventure!

SEASON PASS HOLDER

PERKS

- Receive support from your personal, on-site contact at the Lodge for all inquiries, reservations, changes and more.
- VIP Gold discount card to use at the Lodge; get 20% off food at The Den, Cure Lounge & Patio, Fix Cafe, and discounts at The Spa at Nita Lake Lodge.
- Complimentary mountain-side ski storage in Creekside throughout the season.
- Complimentary self-parking for one vehicle per stay.



SEASON PASS PRICING 2025/26

AVAILABLE TRAVEL DATES

December 1, 2025 to May 14, 2026.

Minimum 2 nights required each stay.

Rates are valid only for stays from
December 1, 2025 to May 14, 2026.

Season Pass 2025/26 (Pre-tax)	10 nights		20 nights		30 nights	
Suite Type	Midweek	Unlimited	Midweek	Unlimited	Midweek	Unlimited
Studio Non-Lakeview	\$2,993	\$5,592	\$5,586	\$10,485	\$7,781	\$14,679
Studio Lakeview	\$3,368	\$5,992	\$6,286	\$11,235	\$8,756	\$15,729
One Bedroom Non-Lakeview	\$4,118	\$7,192	\$7,686	\$13,485	\$10,706	\$18,879
One Bedroom Lakeview	\$4,493	\$7,592	\$8,386	\$14,235	\$11,681	\$19,929
Two bedroom Non-Lakeview	\$5,693	\$11,192	\$10,626	\$20,985	\$14,801	\$29,379
Two Bedroom Lakeview	\$6,068	\$11,592	\$11,326	\$21,735	\$15,776	\$30,429

Prices in CAD and do not include applicable taxes. Midweek Pass is bookable Sunday - Thursday only, Unlimited Pass is bookable any day of the week. Optional breakfast addon for an additional price (\$30 per adult per night).

Blackout dates:

Dec 19 2025-Jan 3 2026.

Jan 16-18 2026.

Feb 13-22, 2026.

TERMS & CONDITIONS

GENERAL

Rates may not be disclosed to any other party without prior agreement of Nita Lake Lodge management. Additional room nights are available, subject to availability, at the same average rate as your purchased Pass Program. Rates disclosed in the rate chart are all prior to applicable taxes. Rates are subject to change if full payment is not made by November 3rd, 2025.

The hotel aims to provide all advertised amenities, but their availability may change or be limited due to maintenance, renovations, or unforeseen events without prior notice. The hotel is not responsible for refunds, compensation, or damages resulting from any amenity's unavailability.

PAYMENT TERMS

100% of your selected program total, including applicable taxes, will be due on November 3rd, 2025.

Once processed, these amounts are 100% non-refundable under any circumstance including, but not limited to: acts of God, war, riot, epidemic, pandemic, government act or restriction, fire, flood, hurricanes, in preparation of weather event forthcoming, any travel warning or health warning imposed by a government, the World Health Organization or the Center for Disease Control.

BLACKOUT DATES:

December 19 2025-January 3 2026.
January 16-18 2026. February 13-22, 2026.

INDIVIDUAL RESERVATION CANCELLATION POLICY

Date changes, for any reason including illness, require 7 days’ notice to the hotel and are subject to availability. No shows, reservation cancellations or early departures within 7 days’ of confirmed arrival date, forfeit those number of nights for use.

ADDITIONAL FEES

Self-parking fee of \$35 per night (plus applicable taxes) for additional vehicles.

Pet cleaning fee of \$35 per night (plus applicable taxes) if a pet stays in the room.

VIP GOLD DISCOUNT CARD TERMS

20% off at The Den, Cure Lounge & Patio and Fix Cafe. Excludes alcohol. Discounts at The Spa at Nita Lake Lodge exclude RMT, packages and spa retail products. Discounts cannot be combined with other offers.

INJURY

In the event of injury or illness that prevents participation in the Seasons Pass Program, the participant acknowledges and agrees that all room night bookings under this program are non-transferable and non-

refundable, regardless of circumstance. This includes, but is not limited to, personal injury, medical conditions, emergencies, or any other inability to use the room nights.

The hotel is not responsible for providing refunds, credits, or alternative accommodations in such cases. All nights must be utilized between December 1, 2025 and May 14th, 2026. Guests are encouraged to obtain appropriate travel insurance to cover unforeseen events.



Photo credit: Guy Fattal, Tourism Whistler

NATURALLY CAPTIVATING

Embark on an adventure into unrivaled mountain comfort.

Each of our 77 spacious suites are beautifully appointed and feature king-sized beds, a double-soaker tub, glass-enclosed rain shower and a comfortable seating area with a basalt gas fireplace.

With stunning lake or valley views, these luxury suites offer the perfect escape after your day of Whistler adventures.



FEATURED AS STANDARD

- King-sized bed
- Basalt gas fireplace
- SMART TV
- CubieBlue® docking station
- Free, unlimited Wi-Fi and hardwired internet
- Double-soaker bath tub and separate rain shower
- Luxurious heated slate tile flooring in the bathroom
- Private, in-room safe
- Complete with fridge, sink & Nespresso coffee machine



STUDIO SUITES

Offering a contemporary twist on iconic mountain comfort, our Studio Suites are not your average hotel rooms.

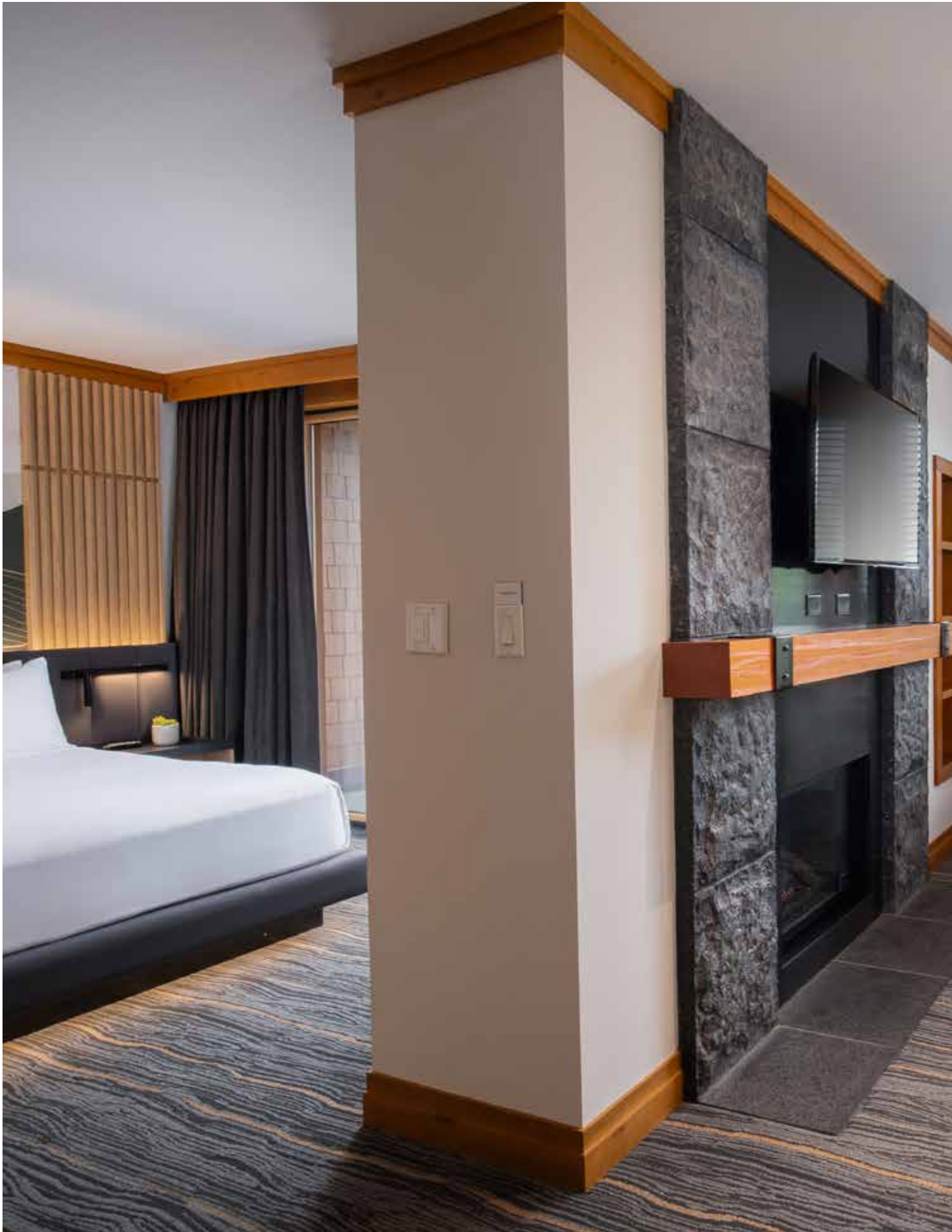
These spacious 500 square-foot studios boast lounge areas with a basalt gas fireplace, fabulous bathrooms and luxurious king-sized beds. Enjoy views of the Creekside valley, or upgrade to our Studio Lake View Suite.

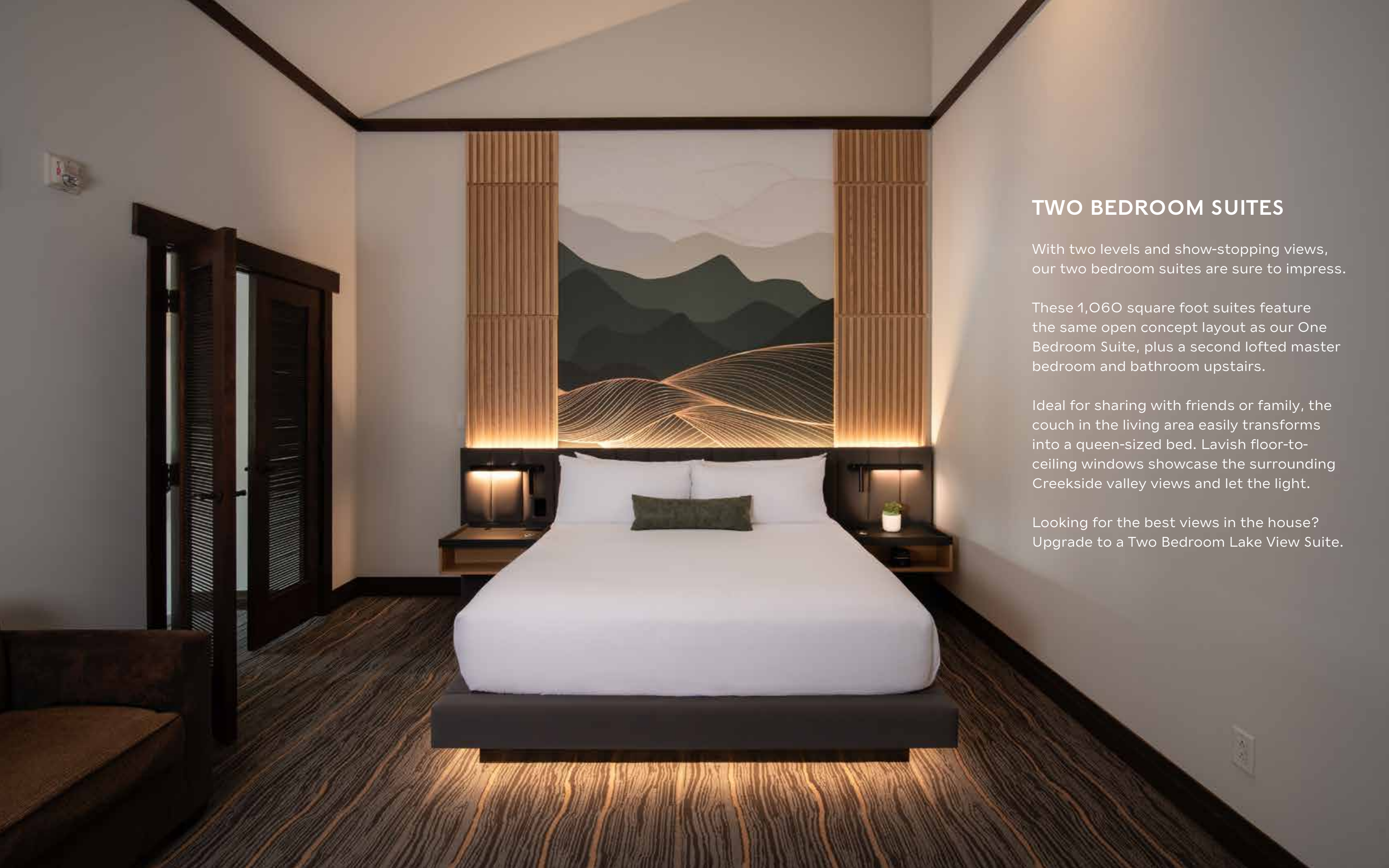
ONE BEDROOM SUITES

Our most popular suite will tempt even the most ambitious adventurer to relax.

Separated by a $\frac{3}{4}$ length wall, the bedroom and living areas both feature unique design elements and allow light to flow seamlessly through the 640 square-foot space. If you have to share; a queen sized pullout couch provides extra sleep space.

To really up the "wow" factor, upgrade to a One Bedroom Lake View Suite.





TWO BEDROOM SUITES

With two levels and show-stopping views, our two bedroom suites are sure to impress.

These 1,060 square foot suites feature the same open concept layout as our One Bedroom Suite, plus a second lofted master bedroom and bathroom upstairs.

Ideal for sharing with friends or family, the couch in the living area easily transforms into a queen-sized bed. Lavish floor-to-ceiling windows showcase the surrounding Creekside valley views and let the light.

Looking for the best views in the house? Upgrade to a Two Bedroom Lake View Suite.

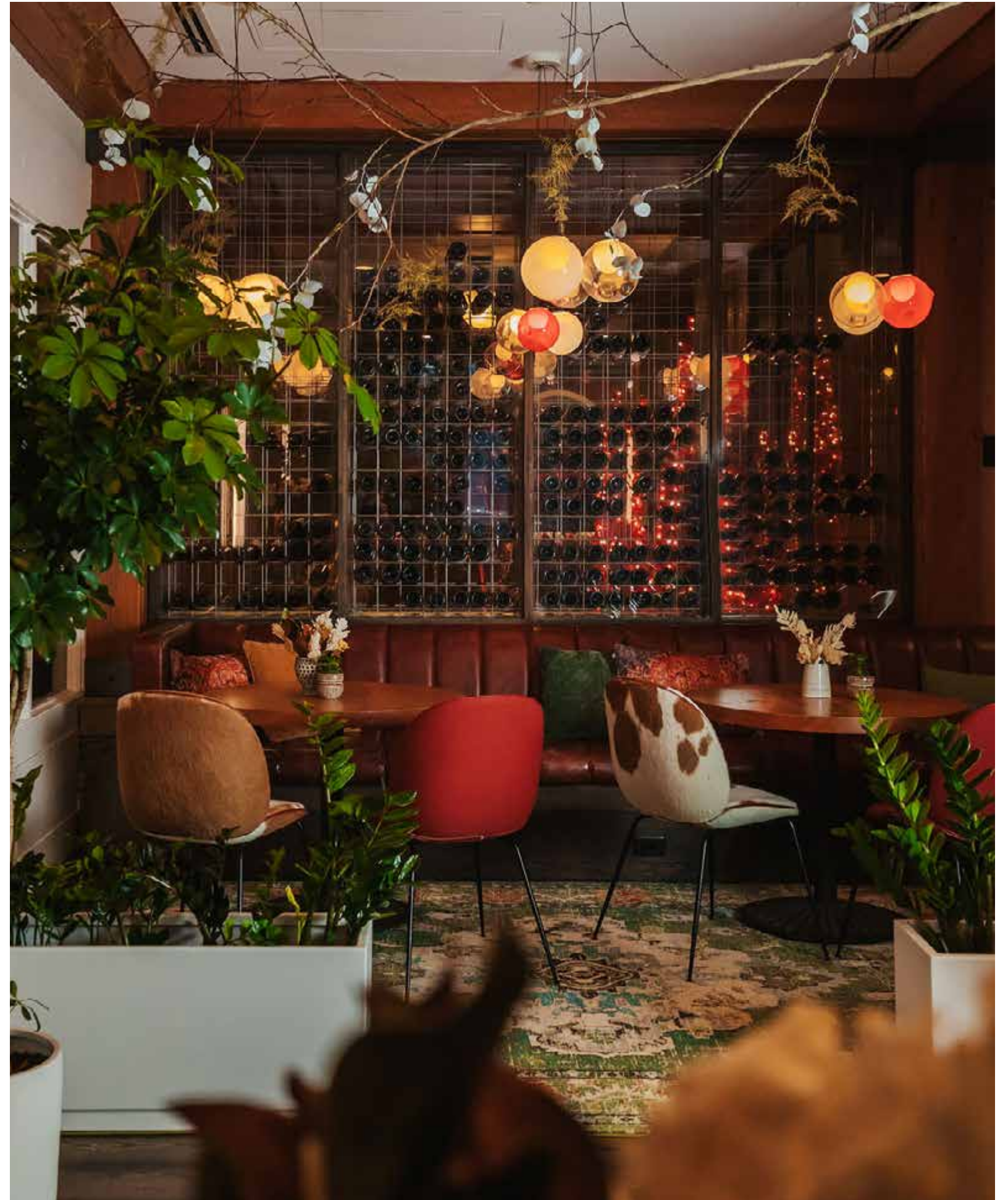


INSPIRED LAKEFRONT DINING

Discover cuisine as personalized and approachable as our service. We serve honest, innovative food and creative drinks in a unique lakeside setting. Whether you crave a sensational lakeside breakfast, a healthy lunch to fuel your adventures, or a social drink fireside, The Den, Cure Lounge & Patio and Fix Cafe offer something for all.

THE DEN

Nestled on the glacier fed Nita Lake, by the foot of Mt. Sproatt in Whistler, The Den celebrates the wilderness around us. We create our seasonal dishes with local products, artisan meats & cheeses and our garden-grown herbs & greens, with a strong emphasis on plant-based alternatives.





Whether it's nourishing fuel for the day, or simply wanting to linger by the fire and watch the world happen, Fix Cafe at Nita Lake Lodge is a Creekside locals' favourite.

Fairtrade organic coffees, freshly baked pastries, homemade soups, sandwiches and pizza, fresh fruit and vegetable juices, smoothies and even local craft beer give you locally-sourced, freshly made options to get your fix for the day.



creekbread

Wood-fired love.

Enjoy iconic locals favourites like the Pemberton Potato Pie and Mopsy's Kalua Pork, or build your own flatbread!

The perfect family friendly restaurant for great food, an authentic atmosphere and now sports too! Located just steps away from the lodge, it's definitely worth the visit.



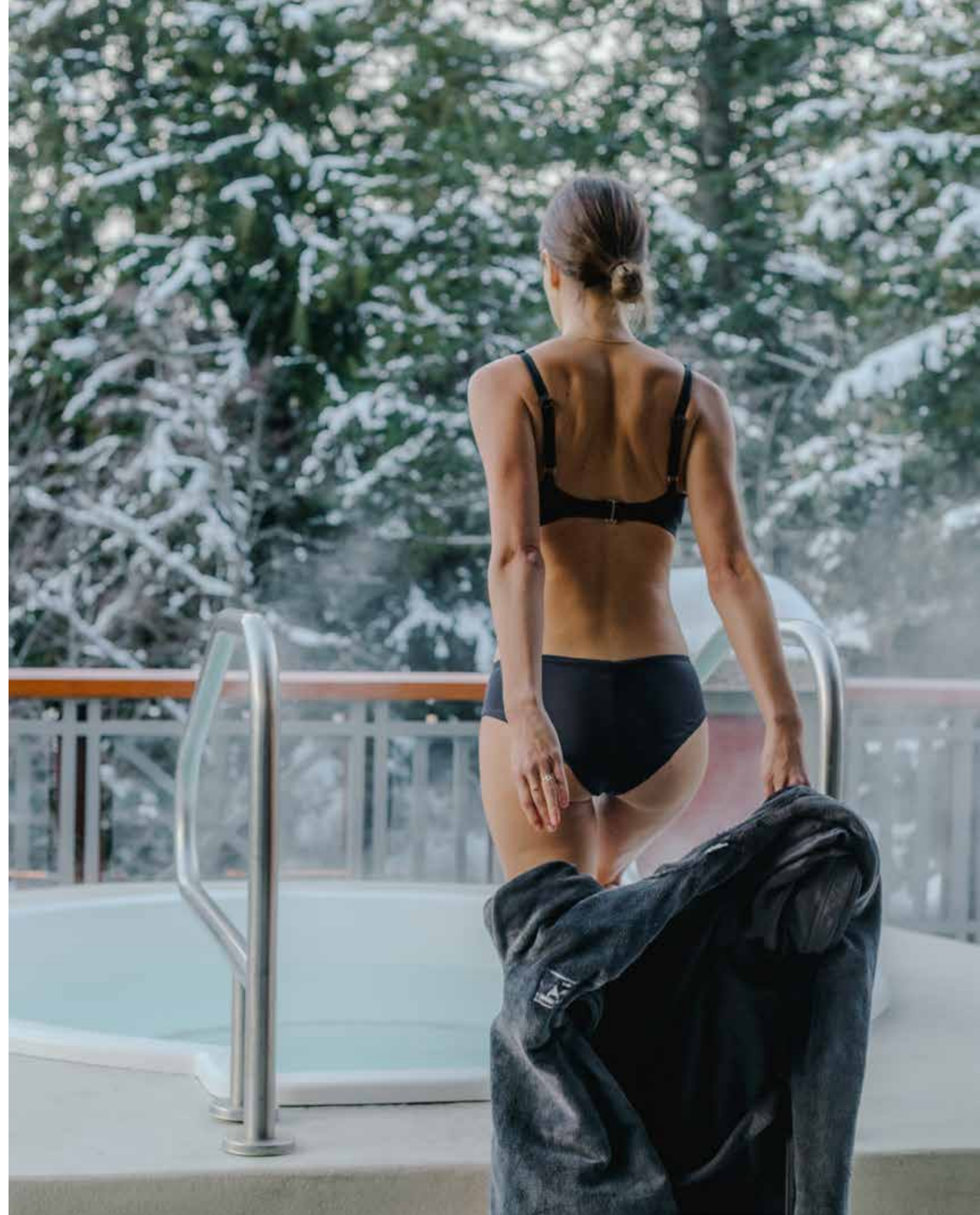
TRANSCENDENT WELLNESS

In a tranquil lakeside setting that is already a retreat from the everyday, The Spa at Nita Lake Lodge welcomes you to a transcendent wellness experience. From soothing and rejuvenating massages, scrubs and body treatments to the one-of-a kind Champagne Nail Bar.

The Spa is sure to restore, relax, and reinvigorate the senses. Together with rooftop hot tubs to take in the magnificent natural surroundings, the revitalizing eucalyptus steam room, and the serenity of the relaxation lounge, the award-winning Spa at Nita Lake Lodge is unmatched in Whistler.

The Spa at Nita Lake Lodge has a variety of new exciting and innovative technologies, including the latest in results-driven wellness technologies such as the Hydrafacial, Laser Genesis, Chemical Peels and body toning/sculpting from TruBody.

THE
SPA
AT NITA LAKE LODGE



A GENEROSITY OF EXPERIENCES

Wellness at Nita Lake Lodge is right at your fingertips. Revive with a freshly-made smoothie from Fix Cafe or rejuvenate with a reinvigorating spa treatment. Feeling more adventurous?

Re-energize with a gym session, a day of skiing or enjoy a wander along the valley trail.



ON THE SNOW

Nita Lake Lodge is **less than 500 metres** from the newly updated Creekside Gondola at the base of Whistler Mountain.

With North America's premiere ski resort so close by, it makes sense that you'll want to explore in the snow. Creekside has everything you need to schedule ski or snowboard lessons, rent equipment, or treat yourself to something new.



Photo credit: Guy Fattal, Tourism Whistler



VALLEY TRAIL

Slip out for an early morning stroll around Nita Lake on the Valley Trail when the mountain air is at its freshest and the lake at its most serene.

Stretching 45km through Whistler's valley, the Valley Trail connects all of Whistler's neighborhoods, lakes and parks with a paved, accessible and scenic path that's perfect for biking, jogging, walking and sightseeing.

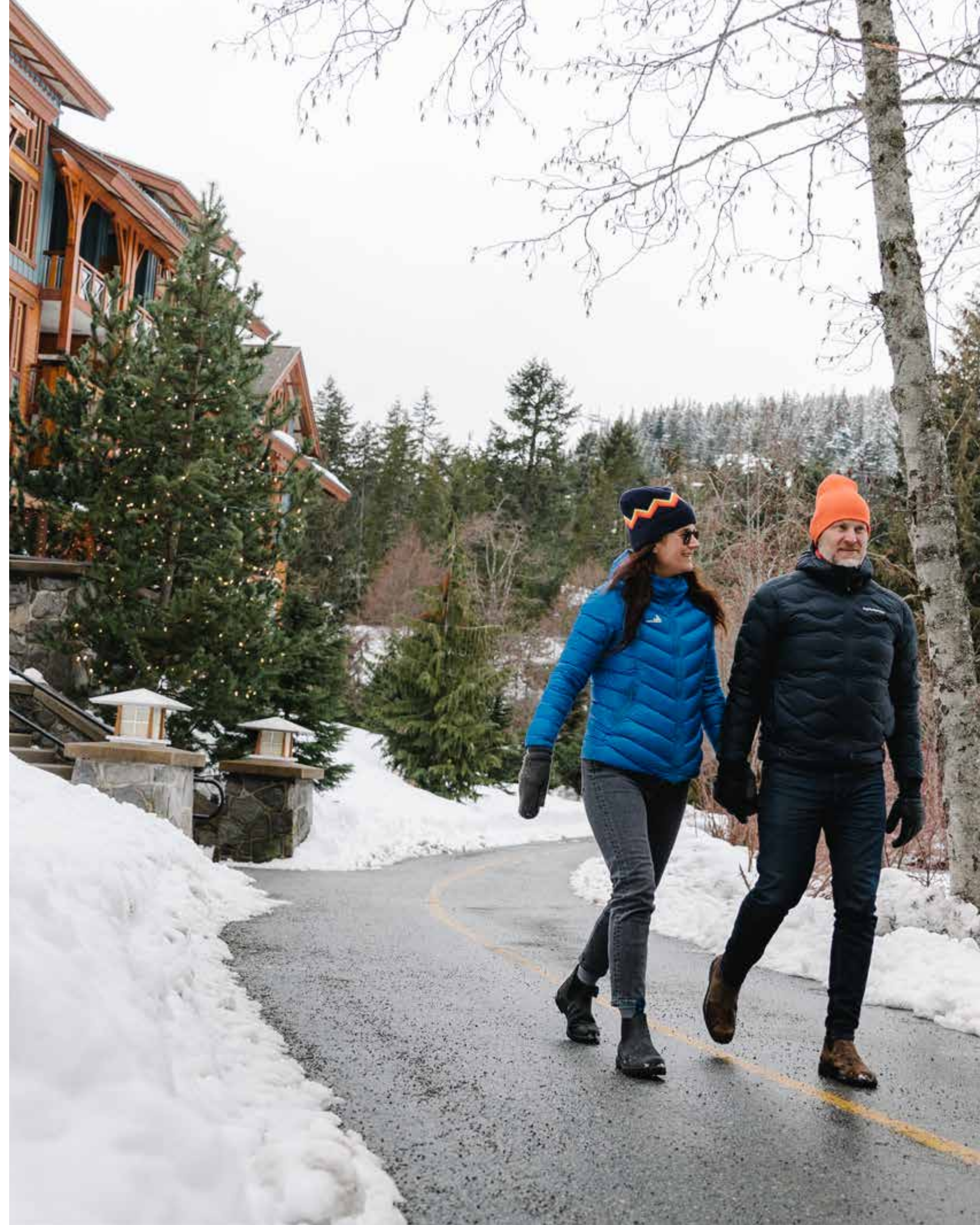




Photo credit: Antoine Charbs

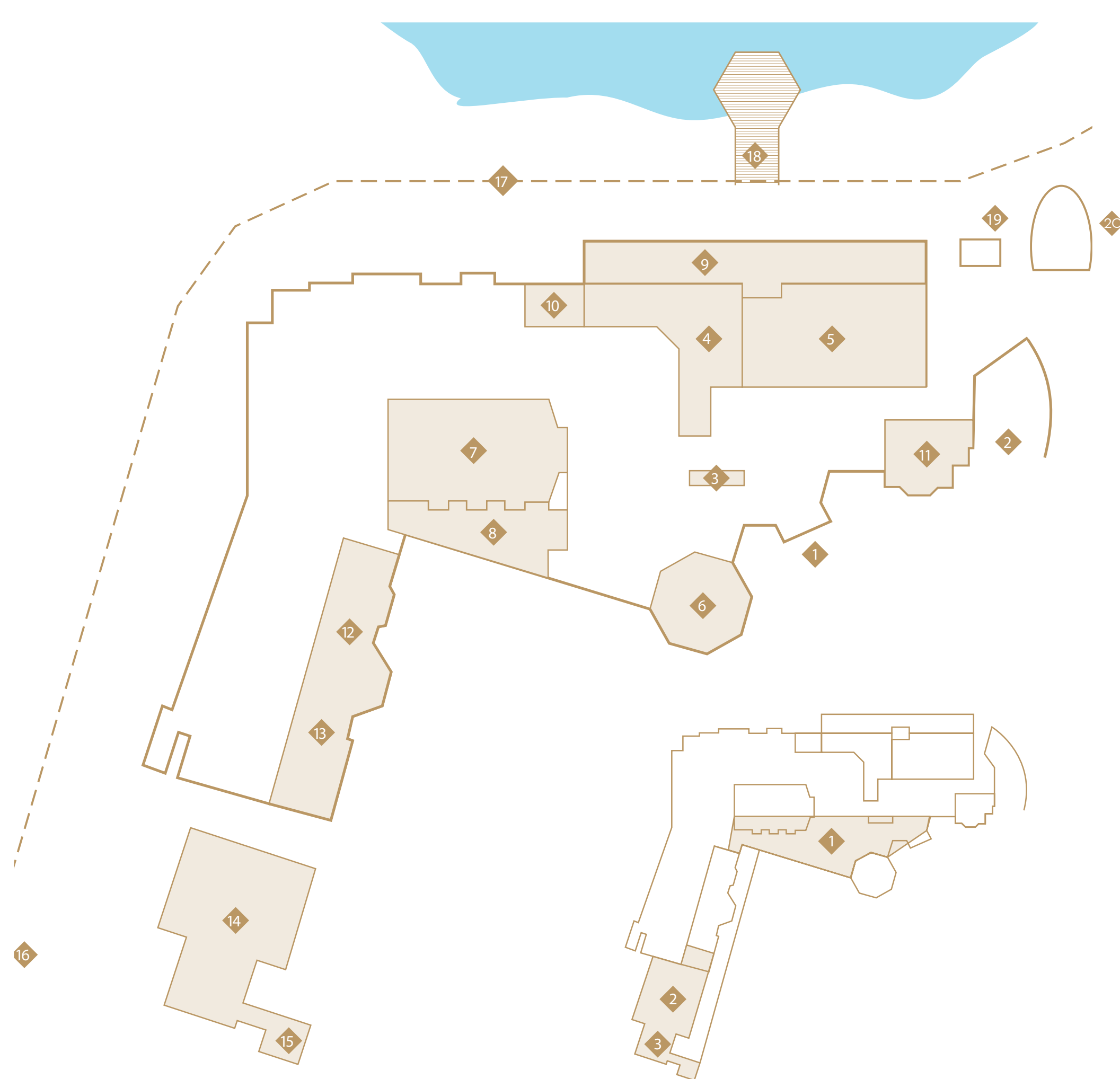
DISCOVER NITA

Take our courtesy shuttle or wander along the lakeside trail to the heart of Whistler. Located in the village of Creekside, less than 500 metres from the base of Whistler Mountain and the newly updated Creekside Gondola, Nita Lake Lodge offers great proximity to activities in all seasons.



With an array of services available and a welcoming team, we offer all the essentials for an unforgettable winter stay in Whistler, including:

- **Hotel courtesy shuttle & EV car service to Creekside & Whistler Village.**
- **Free, unlimited Wi-Fi.**
- **Lakeside plunge pool and hot tub.**
- **Award-winning, luxury spa.**
- **Lakeside barrel sauna.**
- **Ample underground parking.**
- **Fitness facility.**
- **Electric vehicle charging.**
- **Complimentary snow shoe amenities.**
- **Complimentary fat bike amenities.**
- **Complimentary ski lockers at the base of Whistler Mountain.**
- **Cozy lakeside fire pits.**



LEGEND

1. Entrance
2. Underground Parking
3. Front Desk
4. The Den
5. Cure Lounge
6. Fix Cafe
7. Nita Room
8. Nita Room Foyer
9. Lakeside Patio
10. Private Dining Room
11. Library
12. Fitness Studio
13. Champagne Nail Bar
14. Train Station Functions
15. Custom Building Network
16. Rocky Mountaineer
17. Whistler's Valley Trail
18. Nita's Private Dock
19. Lakeside Plunge Pool and Hot tub
20. Lakeside Barrel Sauna

Second Floor

21. Rooftop Garden
22. The Spa at Nita Lake Lodge

nitalakelodge.com | info@nitalakelodge.com | [@nitalakelodge](https://www.instagram.com/nitalakelodge)

Local: 604.966.5700
International: 1.888.755.6482

2131 LAKE PLACID ROAD, WHISTLER, BC CANADA, V8E 0B2

NITA LAKE LODGE

RESORT & SPA