



MINDFUL

MEETINGS

BY MERCURE HOTELS

INSPIRATION | PRODUCTIVITY | PEACE OF MIND

**MERCURE CLEAR MOUNTAIN LODGE, SPA AND VINEYARD
MEETINGS PACK**

MINDFUL MEETINGS BY MERCURE HOTELS

MERCURE CLEARMOUNTAIN LODGE, SPA & VINEYARD

Situated between Albany Creek and Samford, only 40 minutes Northwest of Brisbane’s CBD and Airport, Clear Mountain Lodge is the perfect choice for your next conference or meeting. In this quiet and peaceful atmosphere with panoramic views of the Glasshouse Mountains, Moreton Island, Samford Valley and Brisbane City, conference delegates can escape the pressures of city life and concentrate on the work at hand.

Mercure Clear Mountain Lodge provides multiple conference spaces and breakout areas, 51 accommodation rooms, with Superior rooms offering Twin share capabilities. All accommodation rooms offer fabulous views of the surrounding Samford Valley with views that range from Lake Samsonvale around to the lights of Brisbane City.

RECEPTION OFFICE HOURS

Reception hours operate from 7.00am to 8.30pm daily, with the telephones diverted to the onsite Manager outside of these hours. Arrivals after the restaurant has closed will have access to the onsite resident manager by calling the main hotel number. The Lodge building itself is locked and alarmed after hours with all accommodation rooms being accessible via all the pathways leading from the main entrance and car park.

ACCOMMODATION

For your convenience and comfort Mercure Clear Mountain Lodge offers four different room types, each with modern interiors that complement the natural setting of the Lodge.

Perfect for all your conferencing needs, Mercure Clear Mountain lodge rooms provide guests with an ideal environment, delegates are treated with a peaceful environment free from city noises and distractions perfect for recharging after a day’s team building, training, or brain-storming session.

Standard Rooms	6 Rooms	1 Queen Bed & 1 King Single Bed
Specialty Access	1 Room	1 Queen Bed & 1 King Single Bed
Superior Rooms	27 Rooms	2 Queen Beds
Deluxe Rooms	8 Rooms	1 Queen Bed
Privilege Rooms	6 Rooms	1 Queen Bed
Deluxe Lodge Suites	2 Suites	1 King Bed

Privilege Rooms and Deluxe Lodge Suites offer additional amenities such bathrobes & slippers, espresso coffee machine including 3 free pods, as well as a complimentary bottle of water on arrival.

2 Bedroom Apartment 1 Only Queen Bed in each bedroom

The two-bedroom apartment has 1 Bathroom with Shower only, separate toilet, Kitchenette, open plan dining and lounge room, large balcony with amazing views of the Glasshouse Mountains and Lake Samsonvale, washing machine and drier.

Accommodation rates are subject to change & availability. Accor hotels have dynamic pricing in place and accommodation rates can change daily. Rates quoted are only available with a confirmed in-house conference. No accommodation will be held until a deposit is received, after which an accommodation rate & availability will be confirmed.

STANDARD ROOMS

Standard rooms are contemporary in design with modern finishing's and offer views overlooking the surrounding bushland and filtered lake view and run adjacent to the lodges outdoor swimming pool.

Room Facilities

- 1 x Queen bed & 1 x Single with luxury feather bedding
- Private Ensuite with shower only
- Workstation with lamp
- Foxtel
- Tea and coffee making facilities
- Direct-dial telephone
- Wireless internet access
- Iron & ironing board
- Private balcony



SUPERIOR ROOMS

Superior rooms are slightly larger than the Standard room and offer a range of views from the Glasshouse Mountains, the Australian Native bush with some offering views of Brisbane's CBD. Our Superior rooms offer a great space for business or leisure travellers.

Room Facilities

- 2 x Queen beds with luxury feather bedding
- Private Ensuite with shower only
- Workstation with lamp
- Foxtel
- Tea and coffee making facilities
- Direct-dial telephone
- Wireless internet access
- Iron & ironing board
- Private balcony

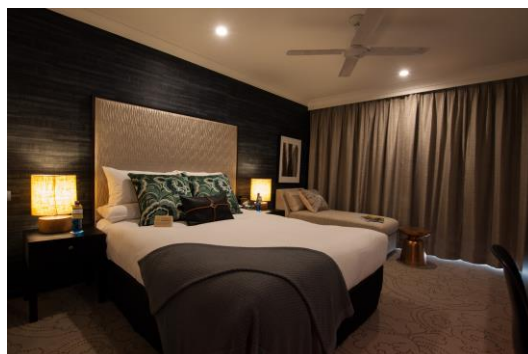


DELUXE ROOMS

Designed with modern finishing's and offering native bush views with filtered lake views so don't be surprised if you spot the odd Koala or Wallaby from your balcony.

Room Facilities

- 1 x Queen bed with luxury feather bedding
- Ensuite with shower only
- Chaise lounge
- Workstation with lamp
- Foxtel
- Tea and coffee making facilities
- Espresso coffee machine
- Direct-dial telephone
- Wireless internet access
- Iron & ironing board
- Private balcony



PRIVILEGE ROOMS

Privilege rooms offer a few little extras to help make your stay more comfortable and enjoyable. Beautifully designed with modern finishing's and offering native bush views and filtered lake views.

Room Facilities

- 1 x Queen bed with luxury feather bedding
- Chaise lounge
- Work station with lamp
- Foxtel
- Tea and coffee making facilities
- Direct-dial telephone
- Wireless internet
- Iron & ironing board
- Private balcony
- Bathrobes & Slippers
- Complimentary welcome bottle of water on day of arrival
- Espresso coffee machine with complimentary pods
- Gorgeous newly renovated bathroom with indulgent rain- shower.



BREAKFAST ON THE MOUNTAIN 7AM-9AM

FULL BUFFET BREAKFAST \$35.00pp (\$30.00 for Overnight Conferences)	
Assorted Fruits, Cereals & Yoghurts	Filtered Coffee & Tea
Fresh Fruit Salad	Hash Browns
Assorted Croissants & Danishes	Eggs: Scrambled, Poached & Fried
Baked Beans	Bacon
Breakfast Sausages	Tomatoes
Mushrooms	Fresh Juices
Assorted Breads & Conserves	Homemade Bread & Butter Pudding
Mini Pancakes	Muesli

LIGHT BREAKFAST OPTIONS DELIVERED TO YOUR MEETING SPACE

Platter of Freshly baked Danishes and croissants	\$10.50pp
BBQ bacon & eggs rolls	\$10.50pp
Seasonal Sliced Fruit Platter	\$7.50pp
Yogurt and granola cups	\$7.50pp
Takeaway barista Coffees (from pre order)	\$5.50pp

CONFERENCE ROOM HIRE

(Included in the Day Delegates Packages for Minimum 20 Delegates)

From \$350.00 per meeting space

Conference Room Hire from 8am – 5pm

1 x flip chart, note pads and pens

1 x whiteboard with markers

Ceiling mounted data projector & electronic screen including sound

Available AV equipment

Filtered water, fresh fruit and mints

*Evening reconvening will incur additional charges for servicing labour & additional room hire from \$150.00 per day

BREAKOUT ROOM HIRE

From \$350.00 per meeting space

Room Hire from 8am – 5pm

NB Evening reconvening will incur additional charges for servicing labour & additional room hire starting from \$150.00

PRIVATE DINING ROOM HIRE

From \$350.00

Due to the layout of the Lodge all Conference groups will be seated in the main Lakeview / City view area at the discretion of Management if you would prefer privacy for your group during your meals, space permitting
Mercure Clear Mountain Lodge can arrange private dining for you.

SERENITY FUNCTION ROOM HIRE

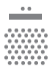



From \$1,000.00

AUDIO VISUAL & EQUIPMENT HIRE

PA system	\$POA
Additional flip chart with paper	\$55.00
Additional whiteboard	\$55.00

NB Audio visual and equipment items are charged per day, prices may be subject to change without notice

CONFERENCE ROOM DIMENSIONS

Room Name	Room Size (sqm)	Ceiling Height (m)	 Theatre	 Cabaret	 U Shape	 Boardroom	 Classroom	 Banquet	 Cocktail
Flynn	64	2.7m	40	25	20	18	28	32	25
Banksia	120	4m	60	35	32	24	40	48	45
Ebert	80	2.7m	40	25	20	18	28	32	35
Esmonde	80	2.7m	40	25	20	18	28	32	35
Mackiehan	80	2.7m	40	25	20	18	28	32	35
Ebert / Esmonde	160	2.7m	80	50	40	36	56	64	75
Ebert / Esmonde / Mackiehan	240	2.7m	140	75	60	54	84	110	150
Cole	49	2.7m	32	20	16	16	20	24	25
Ryan	49	2.7m	32	20	16	16	20	24	25
Cole / Ryan	98	2.7m	64	40	32	32	40	48	50



Banksia



EEM



Flynn



Serenity Lawn

CONFERENCE PACKAGES

Full Day Delegate Package from \$79.00 per delegate

Half Day Delegate Package from \$69.00 per delegate

Inclusions	<p>Minimum 20 Delegates Room hire from 8am - 5pm Wireless internet access for delegates throughout the duration of the event 1 Flip Chart with pad 1 Whiteboard with markers Notepads & Pens Jugs of Filtered Water, Fresh Fruit, and Mints Continuous Tea & Coffee</p>
Upon Arrival	Start with coffee & teas served in your meeting room
Morning Tea	Chef's Choice Sweet & Savory items served to your meeting room
Lunch	Chef's Choice working style lunch served in the Main Lodge building. Our working style lunches change daily and are based upon Chef's choice of Mindful Meetings options
Afternoon Tea	Chef's Choice Sweet & Savory items served to your meeting room

Mercure Clear Mountain Lodges Half Day Delegates includes 4 hours Conference Room Hire from 8-12 or 1-5pm with a Working Style Lunch and either Morning Tea or Afternoon Tea

REFRESHMENT BREAKS

Arrival Tea & Coffee (Included in Day Delegate Conference Package) \$6.50 pp
Jacobs Douwe Egberts automated coffee & teas

Morning Tea and Afternoon Tea Breaks \$15.00 pp
Jacobs Douwe Egberts automated coffee & teas
Chef's Choice of either sweet or savory items served to your meeting space

DAILY CATERING

MONDAY	TUESDAY	WEDNESDAY	THURSDAY	FRIDAY
MORNING TEA	MORNING TEA	MORNING TEA	MORNING TEA	MORNING TEA
Chef Selection 1 x sweet item 1 x savoury item	Chef Selection 1 x sweet item 1 x savoury item	Chef Selection 1 x sweet item 1 x savoury item	Chef Selection 1 x sweet item 1 x savoury item	Chef Selection 1 x sweet item 1 x savoury item
LUNCH	LUNCH	LUNCH	LUNCH	LUNCH
Chef Selection	Chef Selection	Chef Selection	Chef Selection	Chef Selection
AFTERNOON TEA	AFTERNOON TEA	AFTERNOON TEA	AFTERNOON TEA	AFTERNOON TEA
Chef Selection 1 x sweet item 1 x savoury item	Chef Selection 1 x sweet item 1 x savoury item	Chef Selection 1 x sweet item 1 x savoury item	Chef Selection 1 x sweet item 1 x savoury item	Chef Selection 1 x sweet item 1 x savoury item

ADDITIONAL EXTRAS

Bottled Water	\$4.50
Sparkling & Still Water 500ml	\$6.00
Bottle of Soft Drink	\$5.00
Jugs of Soft drink & Orange Juice	\$12.00
Sweet Slice / Cake	\$7.00
Dessert of the day	\$8.00
Hot Chips	\$6.00
Cheese Platter	\$27.00 (2 pax)
Min 2	

CONFERENCE COCKTAIL PACKAGES Minimum 20 Guests

Canapes \$22pp for 6 or \$25pp for 8
Chef selection

Premium Canapé selection - \$8.00 per Canapé

BBQ Pulled Pork Sliders
Fish & Chip Boats
Thai Chicken Salad Bowl
Fried Rice Bowl

BUFFET - \$88pp Minimum 20 Guests

Buffet components are subject to change without notice due to seasonality. If components are not suitable for guests with special dietary requirements a specific dish will be prepared, please be aware that a surcharge may apply if dietary requirements exceed 10% of the total guests dining this fee is to source produce and prepare these special dishes.

Salads:

- Garden Salad
- Potato Salad
- Rocket Salad

Hot Main Dishes (Choose 3 Of the Below Items)

- Chicken Breast & Mustard Sauce
- Roast Beef with Onion & Thyme Jus
- Grilled market Fish with Tomato, Lemon & Capers
- Vegetable Pasta Bake
- Slow Cooked lamb shoulder With Mint sauce
- Sesame Roast Salmon with Asian Greens
- Roast Pork with Apple, Sage and Cashews

Hot Sides:

- Herb Roasted Root Vegetables
- Mixed steamed Vegetables

Desserts:

- Selection Of Petite Desserts
- Fruit salad
- Cheese Platter

FOOD STATION'S - \$25pp Minimum 40 Guests

Antipasto Station:

- Marinated Olives
- Vegetables
- Charcuterie Meats
- Dips
- Australian Cheeses
- Selection Of Breads & Croutons

Taco Station:

- Soft & Hard Taco's
- Pulled Pork
- Crumbed Local Flathead Fillets
- Selection Of Mexican Toppings
- Toppings & Condiments

FUNCTION MEALS Minimum 15 Guests

Function Menus are subject to change without notice due to seasonality, once you have booked your event the current menu will be sent to you for you to select from. If selections are not suitable for guests with special dietary requirements a specific dish will be prepared, please be aware that a surcharge may apply if dietary requirements exceed 10% of the total guests dining this fee is to source produce and prepare these special dishes.

2 Course Alternative Main & Alternative Dessert	from \$75.00 pp
2 Course Alternative Entrée & Alternative Main	from \$82.00 pp
3 Course Alternative Entrée, Alternative Main & Alternative Dessert	from \$95.00 pp

BEVERAGE OPTIONS

SUMMIT PACKAGE – Four (4) Hours \$51.00 pp

- NV Bancroft Bridge Brut | Riverina NSW
- Bancroft Bridge Cabernet Merlot | Riverina NSW
- Bancroft Sauvignon Blanc | Riverina NSW
- Vivo Moscato
- James Boags Premium Light | Tooheys Extra Dry | XXXX Gold | Heineken | Corona
- Monteith Crushed Apple Cider
- Selection of Soft drinks and Juice

FUSION PACKAGE – Four (4) Hours \$58.00 pp

- NV Bancroft Bridge Brut
- Bancroft Bridge Cabernet Merlot
- Bancroft Bridge Sauvignon Blanc
- Vivo Moscato
- James Boags Premium Light | Toohey's Extra Dry | XXXX Gold | Heineken | Corona
- Somersby Crushed Apple Cider
- Absolute Vodka | Bacardi | Bundaberg Rum | Gordons Gin | Jim Beam | J.Walker Red
- Selection of Soft drinks and Juice

MYSTIQUE PACKAGE – Four (4) Hours \$65.00 pp

- NV Bancroft Bridge Brut
- d'Arenberg The Love Grass Shiraz
- Bancroft Sauvignon Blanc
- Vivo Moscato
- James Boags Premium Light | Toohey's Extra Dry | XXXX Gold | Heineken | Corona | James Squire 'One Fifty Lashes' Pale Ale
- Somersby Crushed Apple Cider | Somersby Crushed Pear Cider
- Grey Goose Vodka | Bacardi | Bundaberg Rum | Gordons Gin | Jim Beam | J.Walker Red
- Selection of Soft drinks and Juice

BAR TAB

Please speak to our Conference and Events Coordinators if you wish to arrange a bar tab for your delegates.

TEAM BUILDING IDEAS

Corporate & Group Xperiences

We'll take your team members on the ride of a lifetime, testing their initiative, elevating their self-confidence and supercharging their self-belief and inner strength to that level where they know that anything is possible. Life is hectic and according to some psychologists, people aren't making time to simply "have fun". Understanding this, Corporate & Group Xperiences has developed a portfolio of unique and captivating team building events where clients only need to worry about showing up on the day. Ray Carson and his expert team are waiting to put your team to the test.

Please contact your conference coordinator for more information.

Outgoing Development Australia

Looking for an experienced facilitator to design and run your workshop? Or do you just need a fun Team Building activity, experiential Leadership session or Musical Event as an add-on to your conference? Angie La Motta and her company Outgoing Development Australia (ODA) which was established in 1988 and have a long history with Clear Mountain Lodge.

Please contact your conference coordinator for more information.

Yoga

Begin your day of conferencing with a class of Yoga before breakfast. Advance bookings are essential and dependent on the instructor's availability. Charges Apply