



# *Events & Meetings*

THAT MAKE A DIFFERENCE

All our net proceeds go towards funding  
YWCA's community service programmes.



## GIVING BACK TO OUR COMMUNITY.

Whenever you stay, dine or meet at YWCA Fort Canning, you are also making a difference to the community by contributing to our net proceeds which support YWCA's outreach to those in need.

Find out more about YWCA's  
community service programmes



# Location

## 6 FORT CANNING ROAD SINGAPORE 179494

YWCA Fort Canning is located right opposite Fort Canning Park and a 10-min walk from Dhoby Ghaut and Fort Canning Park MRT stations.



# Sophia Cooke Ballroom



The column-less Sophia Cooke Ballroom has a raised stage and high ceiling which can accommodate up to 450 people. There is also a dedicated pre-function foyer as well as a private room. This grand ballroom has been used for many conferences, dinner banquets and celebrations.

## ROOM SPECIFICATIONS

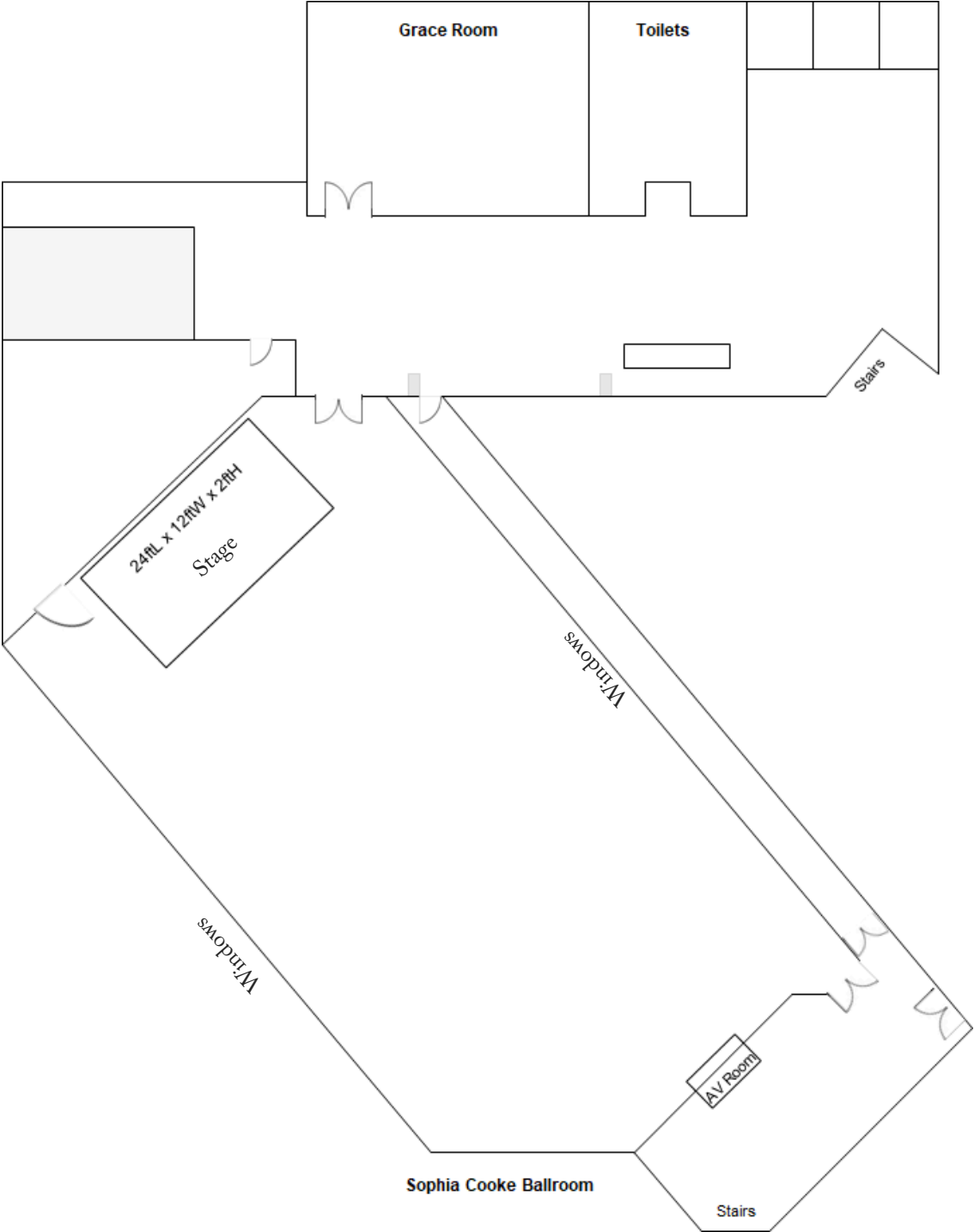
Length: 25m | Width: 17m | Height: 5.4m | Area: 425sqm

Classroom	Theatre	U-Shaped	Banquet	Cocktail
180	450	85	300	350

# Sophia Cooke Ballroom

## FLOOR PLAN

(not drawn to scale)



# Peace Room



This spacious hall located at the level 3 with full glass windows looking out to the swimming pool. This room can accommodate up to 155 persons for a cocktail party and up to 140 persons for dinner banquets.

## ROOM SPECIFICATIONS

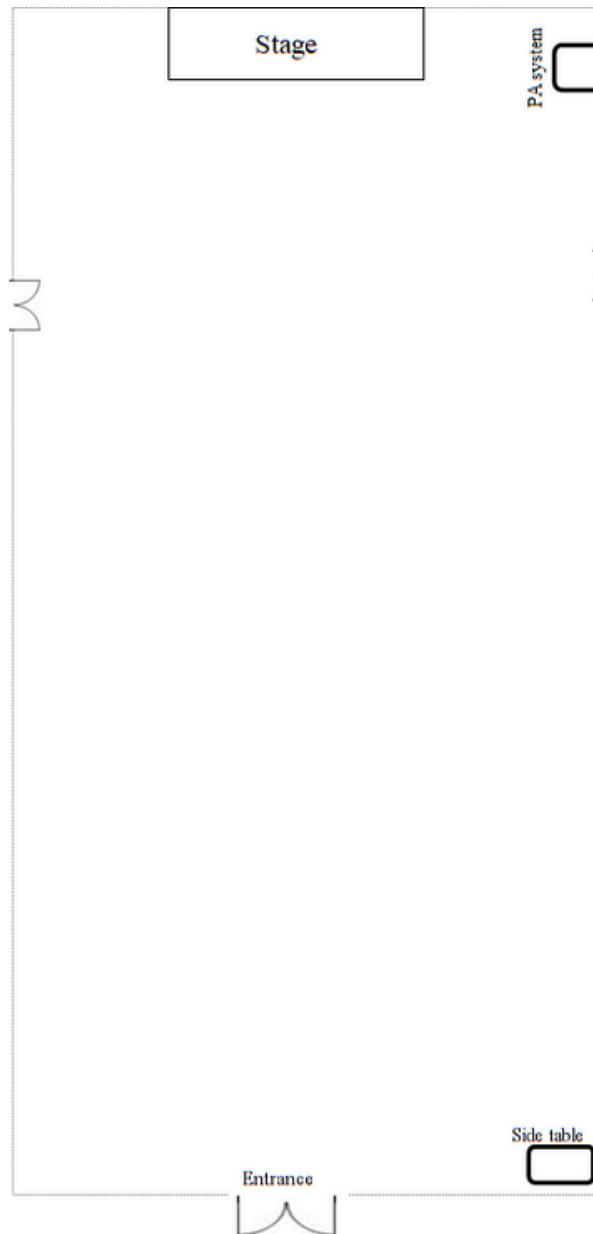
Length: 7.7m | Width: 25.6m | Height: 2.9m | Area: 192sqm

Classroom	Theatre	U-Shaped	Banquet	Cocktail
72	165	50	140	155

# Peace Room

## FLOOR PLAN

(not drawn to scale)



Floor-to-Ceiling Windows

Outdoor Pool

# Love & Charity Room



This room is ideal for board meetings for up to 30 persons & lunch or dinner gatherings for up to 70 persons. With audio-visual equipment in place, organisers can focus on business and their guests.

## ROOM SPECIFICATIONS

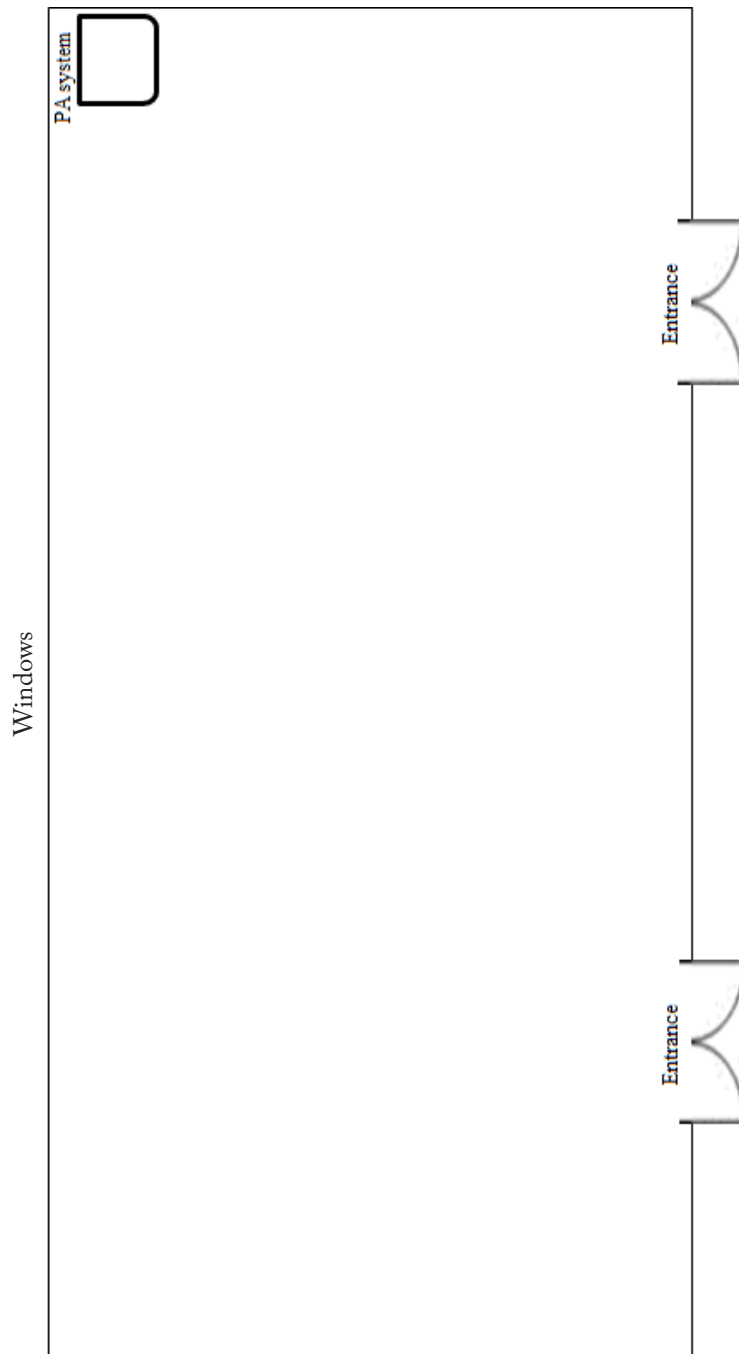
Length: 7.4m | Width: 5.9m | Height: 2.9m | Area: 89sqm

<b>Classroom</b>	<b>Theatre</b>	<b>U-Shaped</b>	<b>Banquet</b>	<b>Cocktail</b>
40	80	30	70	85



# Love & Charity Room

## FLOOR PLAN (not drawn to scale)



# Hope & Faith Room



This spacious room can take up to 90 persons in a theatre style seating with two entrances. Meeting guests can enter from the back of the room during an ongoing talk or seminar.

## ROOM SPECIFICATIONS

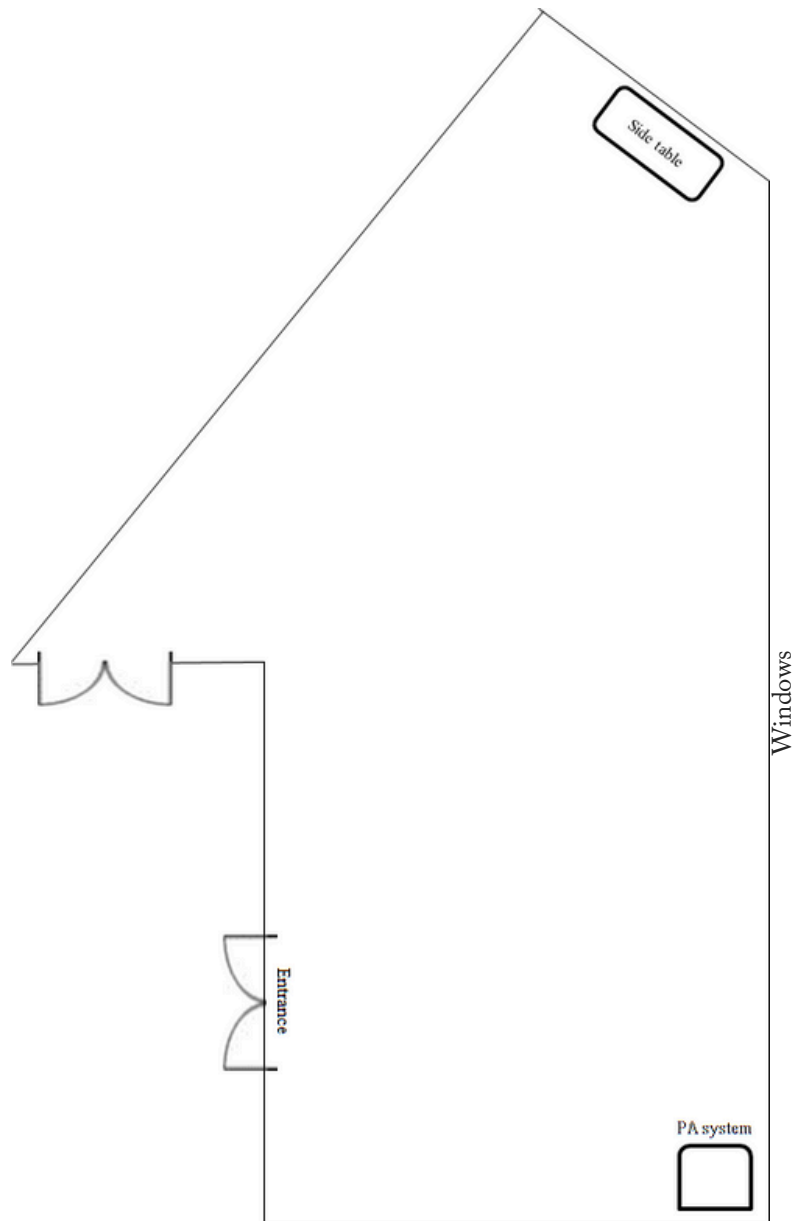
Length: 7.9m | Width: 5.6m | Height: 3.0m | Area: 114sqm

<b>Classroom</b>	<b>Theatre</b>	<b>U-Shaped</b>	<b>Banquet</b>	<b>Cocktail</b>
40	90	30	90	105

# Hope & Faith Room

## FLOOR PLAN

(not drawn to scale)



# Grace Room



This meeting space can take up to 60 persons in a banquet set up and has plenty of daylight. It is located next to our Sophia Cooke Ballroom on Level 2.

## ROOM SPECIFICATIONS

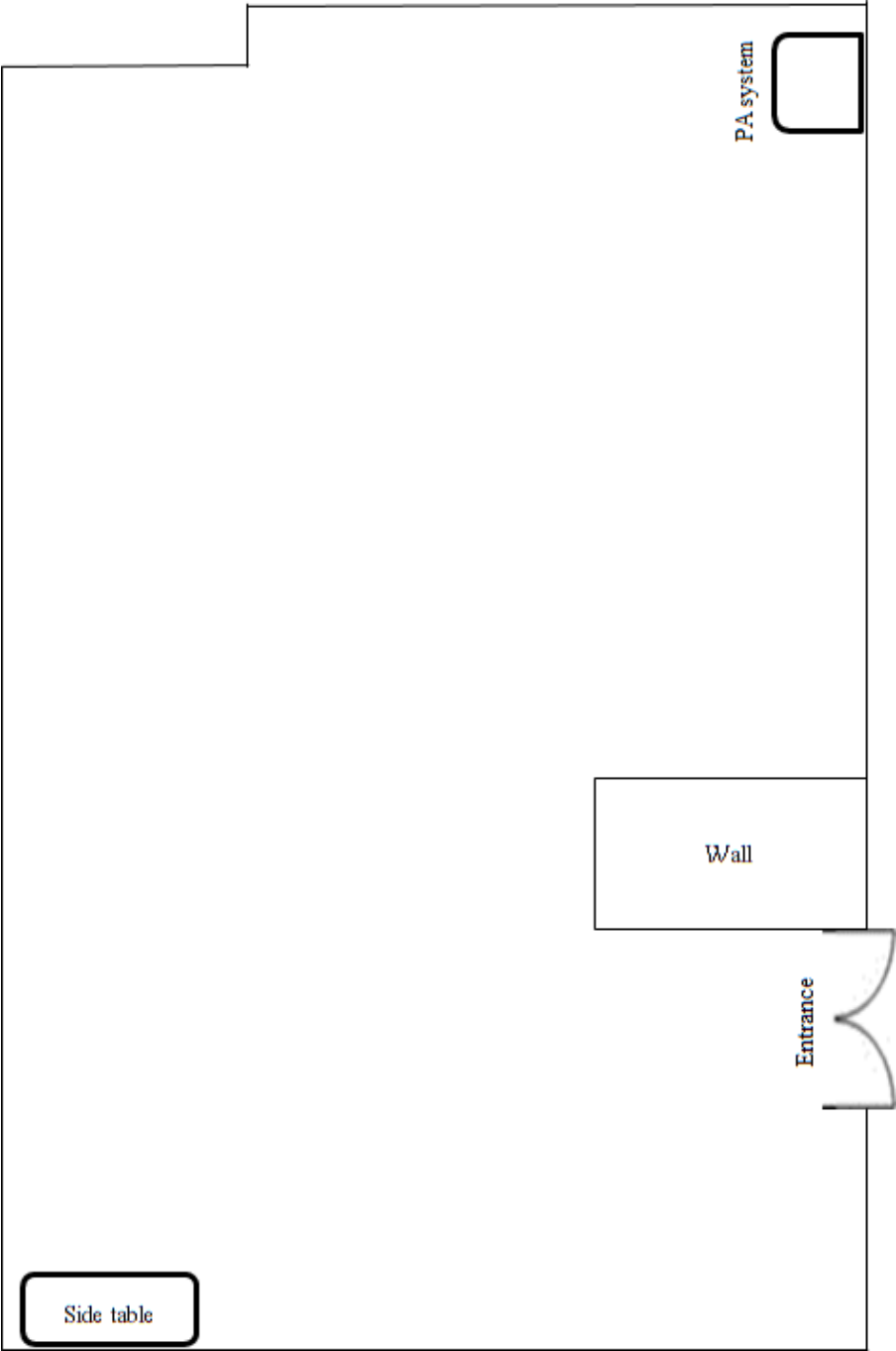
Length: 10.9m | Width: 7.5m | Height: 2.9m | Area: 81sqm

Classroom	Theatre	U-Shaped	Banquet	Cocktail
35	70	25	60	75

# Grace Room

## FLOOR PLAN

(not drawn to scale)



# Joy Room



This room can take up to 50 persons in a banquet style set up. Choose from our extensive menu options when you host your meetings with us.

## ROOM SPECIFICATIONS

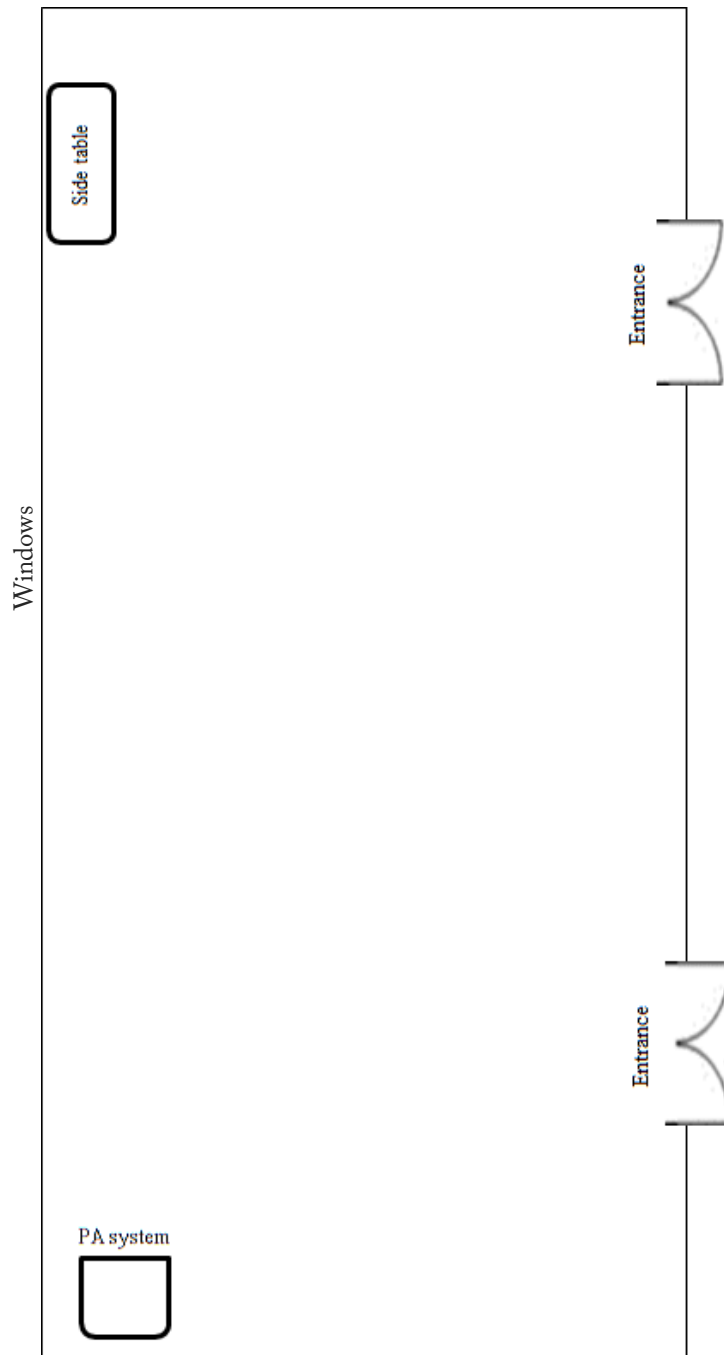
Length: 6.1m | Width: 6.2m | Height: 3.0m | Area: 68sqm

<b>Classroom</b>	<b>Theatre</b>	<b>U-Shaped</b>	<b>Banquet</b>	<b>Cocktail</b>
30	55	20	50	65

# Joy Room

## FLOOR PLAN

(not drawn to scale)



## CALL

6335 8013 / 8003

## EMAIL

ywcabanquetsales@ywca.org.sg

## VISIT

www.ywcafortcanning.org.sg

## FOLLOW

Facebook: @ywcafortcanning

Instagram: ywcafortcanning.sg

## MEET

YWCA Fort Canning  
6 Fort Canning Road,  
Singapore 179494



How to Get There:



**YWCA**  
**FORT CANNING**

STAY. GIVE BACK TO OUR COMMUNITY