

U NIMMAN CHIANG MAI



U NIMMAN CHIANG MAI

U Nimman Chiang Mai is a sophisticated yet vibrant retreat on Nimmanhaemin Road, just minutes away from the city's trendiest shopping, dining and nightlife district.

Merging modern design with elements of traditional Lanna architecture, the hotel's distinctive design is just one of the many superlatives setting U Nimman Chiang Mai as one of Thailand's most unique. Looking for something different in Chiang Mai? U Nimman Chiang Mai has everything the modern traveller seeks.

Opening Date :

1 March 2017

Owner :

Tanboon Company Limited

Hotel Management :

Absolute Hotel Services Co., Ltd.

Brand:

U Hotels & Resorts

General Manager :

Mrs. Chutima Kaewta-Fortescue

UR PLACE

U Nimman Chiang Mai, an exciting 5-star luxury hotel, is a sophisticated yet vibrant retreat on Nimmanhaemin Road, just minutes away from the city's trendiest shopping, dining and nightlife district.



GUEST ROOM FEATURES

[illegible]

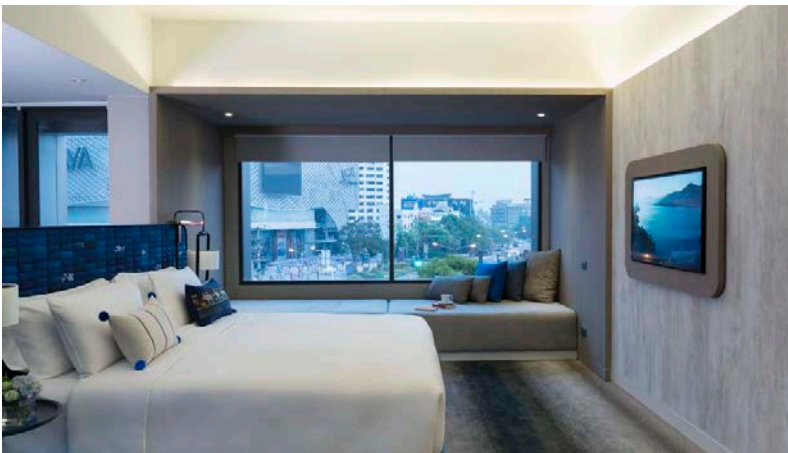
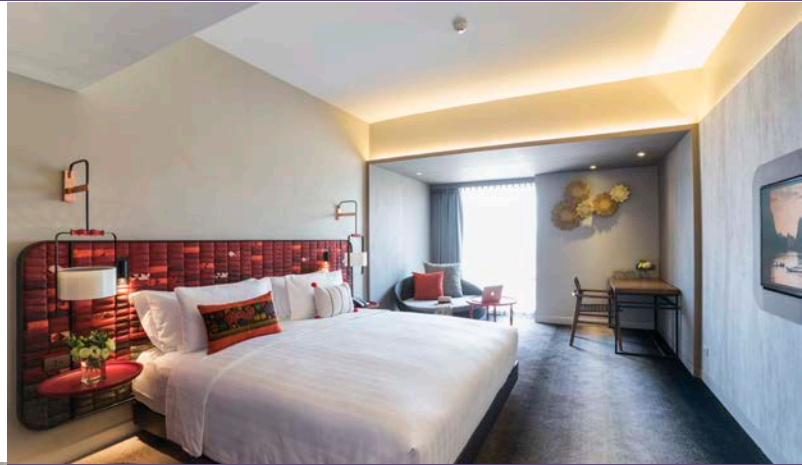


Deluxe

Features a private balcony plus a full host of luxury amenities. Designed and decorated in soft tones merging with elements of traditional Lanna architecture for total relaxation.

Premium Deluxe

These stylish rooms merge modern design with elements of traditional Lanna architecture and are perfect for a relaxing stay. Featuring a full host of luxury amenities, they are the ideal base for your Chiang Mai adventure.

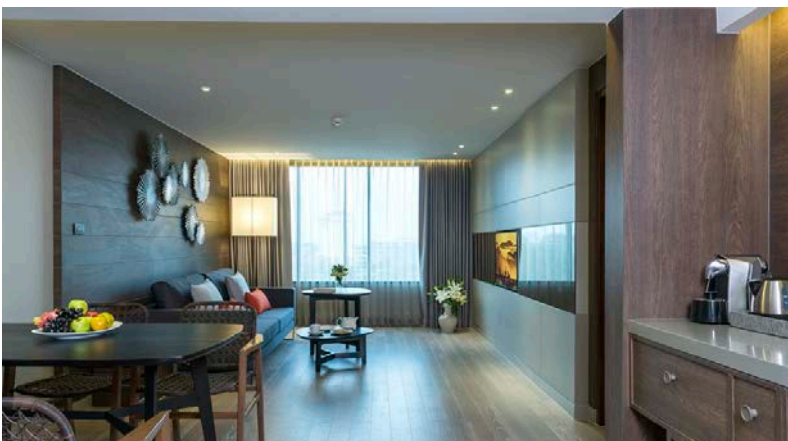
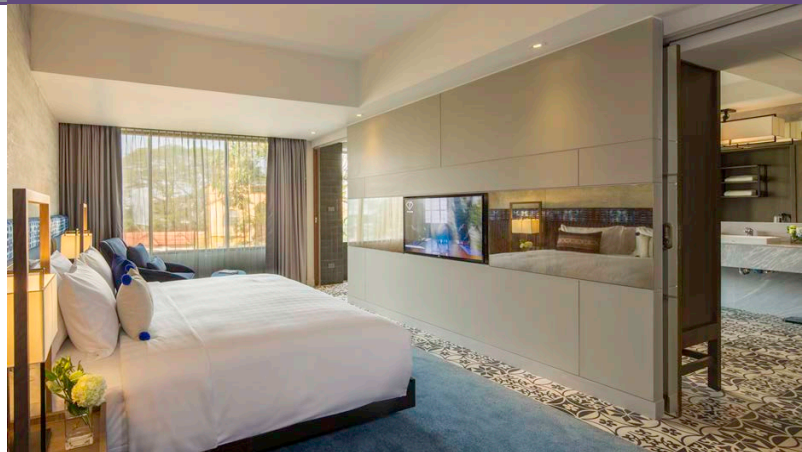


Premium Deluxe Corner

A large 50 sqm. corner room with a spacious living area to chill out in, plus all the luxury amenities you could wish for. Available in king bed only.

One Bedroom Family Suite

One-Bedroom Suites feature luxury living spaces and bathrooms plus indulgent amenities for an unforgettable stay. Available in king bed only, including luxury bathroom with separate rain shower and bathtub in every room.



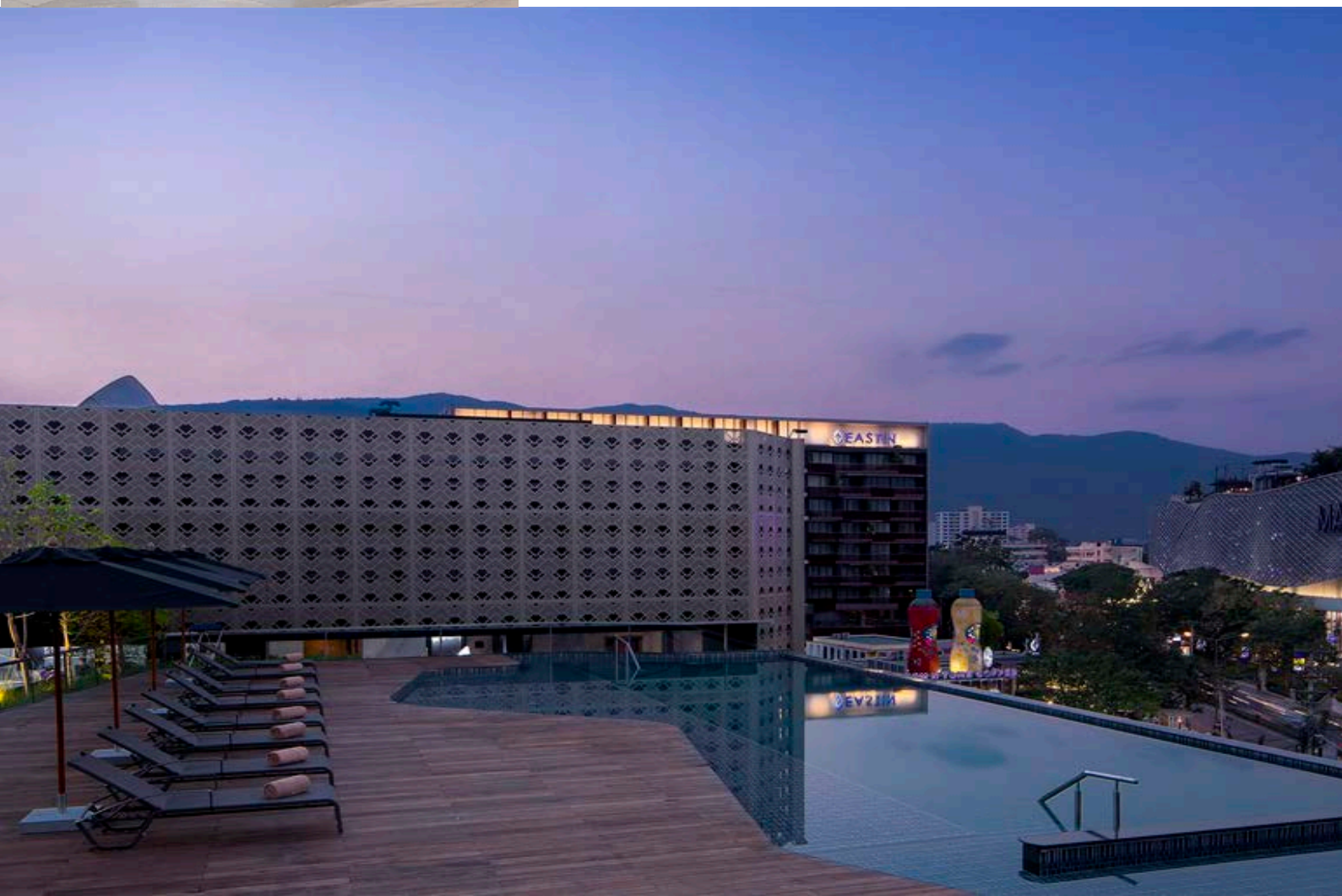
Two Bedroom Family Suite

Two-Bedroom Suites are the perfect place to unwind and completely relax, with separate living rooms and large bathrooms plus a range of luxury amenities. Featuring one king plus twin beds and luxury bathrooms with separate rain shower and bathtub.



FACILITIES & SERVICES

- 24-Hour use of room
- Breakfast Whenever Wherever
- Fitness Centre
- Library
- Outdoor swimming pool
- Meeting and event facilities
- Wedding facilities
- Ur dining room service
- Free bicycle rentals for all guests
- Hi-speed Wi-Fi internet access throughout the hotel
- Daily housekeeping service
- Laundry service
- Sightseeing and tour arrangements





RESTAURANT

EAT@RINCOME

An all-day dining venue open for breakfast, lunch and dinner serving high quality sumptuous cuisine in a contemporary market-style setting.

Opening hours: 6.30 a.m. - 11.00 p.m.

THE LOUNGE

A wine bar with library adjacent to the reception area offering guests the opportunity to savour an extensive selection of wines by the glass as well as classic and avant-garde cocktails complemented by tapas-style fare.

Opening hours: 10.00 a.m. - 11.00 p.m.





The @Nimman Convention Centre is a multipurpose convention facility which provides a one-stop convention solution for any meeting needs. For a truly remarkable and memorable event experience, the hall offers an ideal location, modern facilities and professional services to host conferences, weddings and special events of up to 950 guests.



Venue	Area (sqm.)	Dimensions (m.)
Nimman Hall	1000	48 x 22 x 7
Nimman 1	350	16 x 22 x 7
Nimman 2	150	7 x 22 x 7
Nimman 3	500	25x22x7
Pre-Function area	570	

U'S UNIQUE CONCEPT

- 24-hour use of room which allows guests to enjoy their room for 24 hours from arrival
- Breakfast whenever/wherever during the stay

U CHOOSE PROGRAMME

*Personalise your stay at
U Nimman Chiang Mai.*

Our U Choose Programme allows guests the freedom to select their choice of pillow, soap and tea prior to arrival. Guests can choose their selections when making their booking or by sending an email to the hotel.



Pillow Selection

- Luxury Duck Down
- Ultra Soft Micro Fibre
- Medium Firm Polyester
- Firm Ball Fibre



Soap Selection

- Jasmin
- Lemongrass
- Wild Orchid



Tea Selection

- Green Tea
- Peppermint Tea
- Earl Grey Tea

U MAKE A DIFFERENCE

The “U Make a Difference” programme is carried out in all of our U Hotels & Resorts. It is a community relations activity to support organizations that serve a broad segment of the local community. We invite our guests to be part of this programme too, because U can make a difference!

U Nimman Chiang Mai contributes USD 1 for every night a guest stays at our hotel. The contributions are presented to the charities twice a year. As part of the "U Make a Difference" programme, we also arrange weekly scheduled visits to the charity so guests can see firsthand the improvements that their contributions are making to the Chiang Mai community.

LOCATION

U Nimman Chiang Mai is located on Nimmanhaemin Road in the trendiest section of Chang Mai, just 15 minutes from Chiang Mai International Airport.





NIMMAN
CHIANG MAI

1 Nimmanhaemin Road
Tambon Suthep, Ampoe Muang
Chiang Mai 50200, Thailand
Tel. +66 52 005 111

Reservations : +66 52 001 900
reserve@unimmanchiangmai.com
www.unimmanchiangmai.com



UNimman

Sales & Marketing Centre
1091/343 New Petchburi Road
Makkasan, Rajthevee, Bangkok
10400, Thailand
Tel +662 651 7677
Fax +662 651 7678
salesth@uhotelsresorts.com