


# Eastin Grand Hotel Sathorn Bangkok



EASTIN  
GRAND HOTEL  
SATHORN BANGKOK





Eastin Grand Hotel Sathorn Bangkok is ideally situated in the Sathorn business district and is just minutes from the world-famous Chao Phraya River.

A skybridge linked directly to Surasak BTS station makes it is the only hotel in Bangkok with its own direct access to the Skytrain, literally bringing the city to your doorstep.

**Opening Date :**  
4 May 2012

**Owner :**  
EGS Assests Co., Ltd.

**Hotel Management :**  
Absolute Hotel Services Co., Ltd.

**General Manager:**  
John Westoby





A photograph of a modern hotel lobby. The background features a large, curved wall made of vertical wooden slats. In the foreground, there is a curved reception desk with a dark top and light-colored base. Behind the desk, a person is visible. To the right, a large television screen displays a beach scene. The floor is dark and reflective. The overall atmosphere is warm and contemporary.

Eastin Grand Hotel Sathorn Bangkok has a total of 390 rooms each designed for absolute comfort and functionality. Rooms are equipped with all the luxury amenities necessary for today's business and leisure travellers, and offer fantastic views of Bangkok.

## Guest Room Features

[illegible]





## Superior Rooms

Comfortable and modern rooms for a luxurious stay in the city with outstanding views of either the Chao Phraya River or Bangkok skyline. Double or twin-bedded.

## Superior Sky Rooms

Located on higher floors for outstanding views of either the Chao Phraya River or Bangkok skyline. Double or twin-bedded.



## Executive Superior Sky with Lounge Access

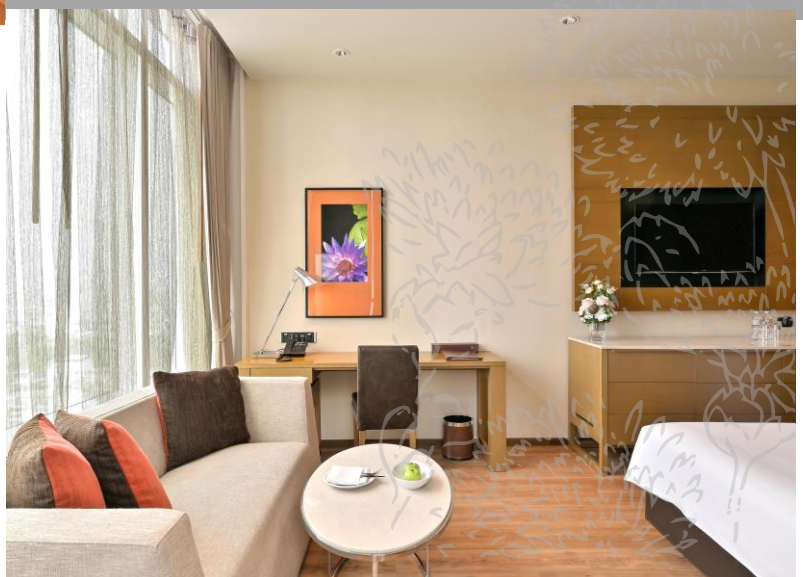
Located on the highest floors for simply the best available views of the city. Double or twin-bedded.

This room provides guests with Executive Lounge access and privileges.

## Executive Deluxe with Lounge Access

Corner rooms that offer complete privacy and modern facilities.

This room provides guests with Executive Lounge access and privileges.







## Premium Deluxe with Lounge Access

Larger sized corner rooms offering complete privacy and added comfort. Double bed only.

This room provides guests with Executive Lounge access and privileges.

## Junior Suite with Lounge Access

Junior Suites consist of separate living rooms and bedrooms for the utmost in luxury and comfort. They are located at the corners of the floor for added privacy.

This room provides guests with Executive Lounge access and privileges.







## Facilities & Services

- Fitness centre & swimming pool
- Meeting facilities
- Hi-speed Wi-Fi internet access throughout the hotel
- Daily housekeeping service
- Laundry service
- Executive Lounge
- Transportation service



## Unique Services

- Flexi Breakie - breakfast served from 06.00 - 11.30 hrs.
- Ready and Welcome, Guaranteed-let us know your arrival time 48 hours in advance of arrival and we guarantee your room will be ready by our check-in time (14.00 hrs.) otherwise the 1st night is free
- Children under 16 years old will not be charged an extra person fee





## Executive Lounge

Guests who choose to stay in rooms that include Executive Lounge access are also given exclusive Executive Lounge privileges. These privileges include complimentary breakfast served in the lounge, access to complimentary snacks and drinks throughout the day and a daily open bar cocktail reception. A dedicated Executive Lounge concierge service is also available to take care of your every need.





# Restaurants

## THE GLASS HOUSE

Your Value Buffet Venue

Our all-day dining restaurant is located on the 5<sup>th</sup> floor, featuring a show kitchen in a modern international setting.

The restaurant offers Asian and Western-inspired buffet specialties as well as an a la carte menu.

### Opening Hours

A La Carte: 06.00 - 23.00 hrs.  
Breakfast Buffet and A La Carte: 06.00 - 11.30 hrs.  
Lunch Buffet 12.00 - 14.30 hrs.  
Dinner Buffet: 18.00 - 22.00 hrs.



## Antito

Zesty Resto-Bar Serving Creative Italian Cuisine

Located on the 14th floor, Antito is an open living room over the city. Michelin star chef Amerigo Tito Sesti's authentic yet creative Italian cuisine features a variety of antipasti as well as seasonal dishes influenced by local and artisanal produce. Vibrant pop art vibes and a comfy space that incites diners to fall in love with an Italian "aperitivo" lifestyle, where a drink leads to dinner and a dinner becomes a night out.

Opening Hours: 12:00 - 23.00 hrs.





# Restaurants

## CHEF MAN

Enjoy the Original Taste of Chinese Cuisine

Chef Man showcases an extensive array of authentic Cantonese cuisine, provincial specialties, creative dim sum menu and premium tea collection in a relaxed yet elegant atmosphere.

A selection of savoury dishes emphasize exquisite ingredients, fresh seafood and traditional flavours. Located on the 3<sup>rd</sup> floor.

Opening Hours

Lunch: 11.30 - 14.30 hrs.

Dinner: 18.00 - 22.00 hrs.



## SWIZZLES

The Place. The Time.  
The Mood.

located on the ground floor, Swizzles offers a variety of drinks and snacks as well as “to go” beverages for guests on the run. It’s the perfect place to rest, relax and unwind at any time of day.

Opening Hours

10.00 - 24.00 hrs.





# Weddings

Let our team of professionals at Eastin Grand Hotel Sathorn Bangkok create a uniquely memorable and personal wedding for you and your guests. Whether you dream of a grand gala affair or an intimate gathering, we invite you to explore all the possibilities for your perfect day



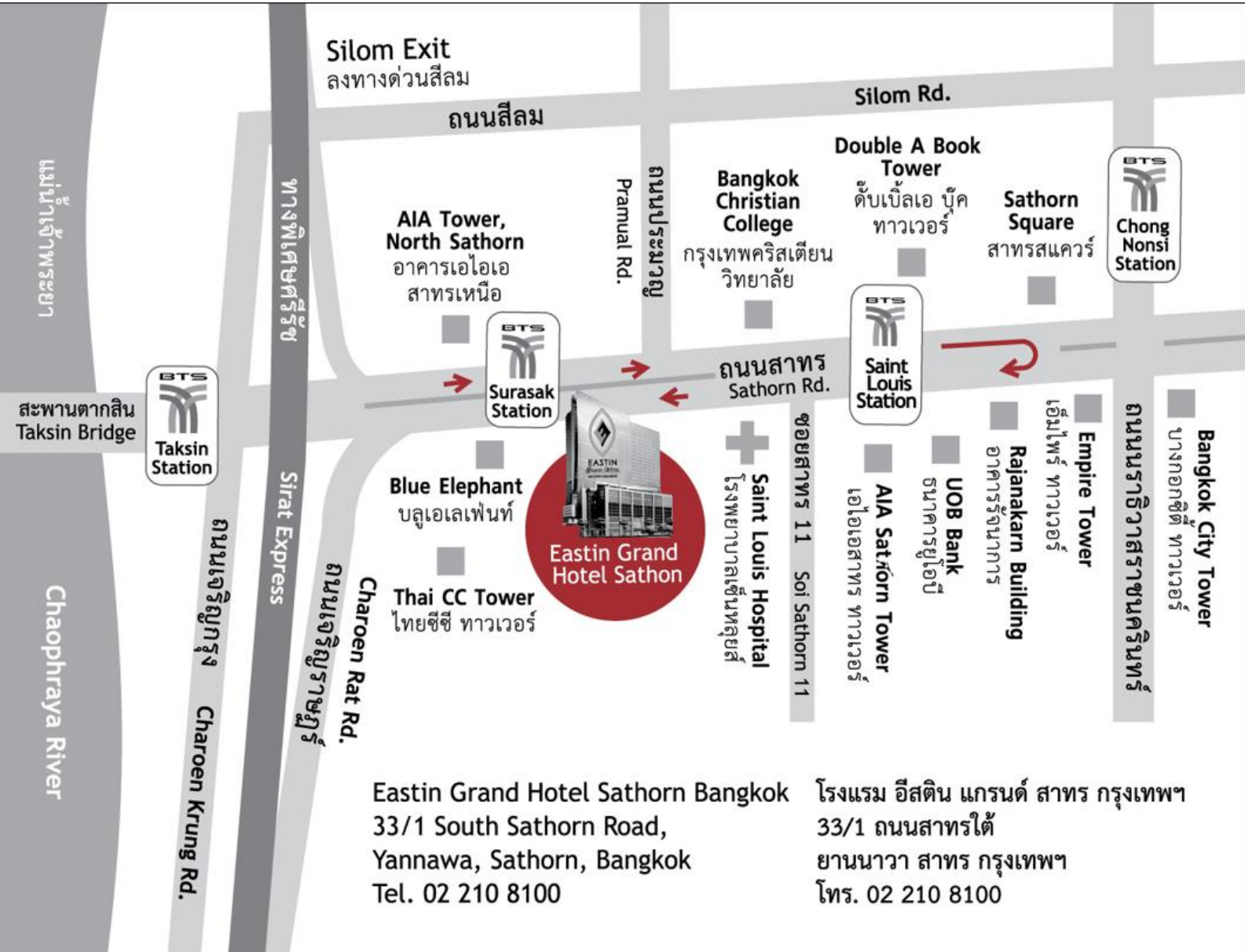
## Conferences & Events

Over 1,800 square meters of event and conference accommodation spread over three entire floors, with 7 meeting rooms, 2 boardrooms and one ballroom that can be divided into 3 small function rooms, with all areas having the benefit of natural light. Four of the meeting rooms are located on the 33<sup>rd</sup> floor offering spectacular views of the Chao Phraya River and city skyline. All are fully equipped with cutting-edge audio visual and other equipment for perfect events. Our experienced team can plan and organize your event with the right choice of menu to suit your individual requirements.



Venue	Area (sqm.)	Dimensions (m.) W x L x H
Surasak Ballroom	612 sqm.	14 x 44.5 x 5.2 m
Foyer	290 sqm.	N/A
Surasak I	416 sqm.	14 x 30.5 x 5.2 m
Surasak II	98 sqm.	14 x 7 x 5.2 m
Surasak I+II	514 sqm.	14 x 37.5 x 5.2 m
Surasak III	98 sqm.	14 x 7 x 5.2 m
Surasak II+III	196 sqm.	14 x 14 x 5.2 m
Terrace	40 sqm.	196 m





## Eastin Grand Hotel Sathorn Bangkok

33/1 South Sathorn Road,  
Yannawa, Sathorn,  
Bangkok 10120 Thailand

Tel: +66 2 210 8100

Fax: +66 2 210 8399

Email: [rsvn@eastingrandsathorn.com](mailto:rsvn@eastingrandsathorn.com)



EastinGrandSathorn

