

THE FULLERTON HERITAGE

SINGAPORE

THE
FULLERTON
HOTEL

FULLERTON
WATERBOAT
HOUSE

ONE FULLERTON

THE FULLERTON PAVILION

CLIFFORD PIER

THE FULLERTON BAY HOTEL

CUSTOMS HOUSE



WWW.THEFULLERTONHERITAGE.COM

THE FULLERTON HERITAGE GALLERY

THE FULLERTON HOTEL SINGAPORE

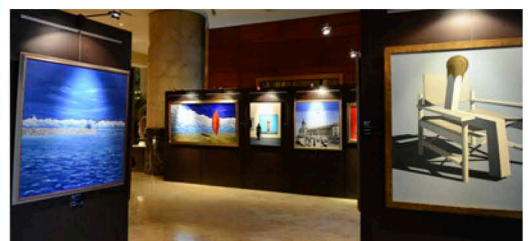
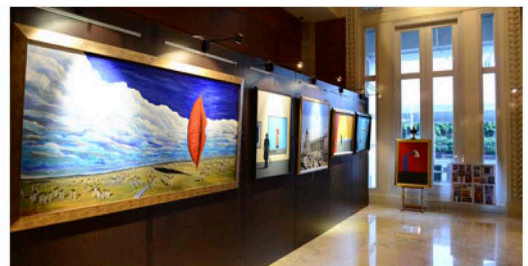
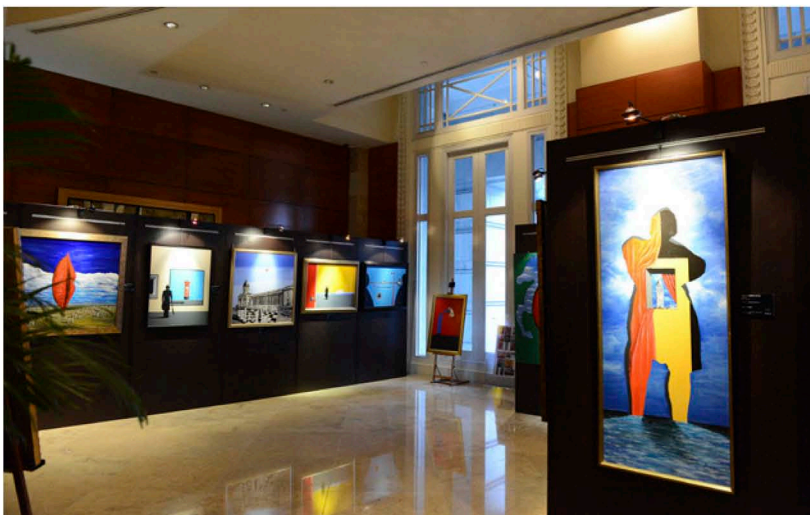
The Fullerton Heritage Gallery is designed to showcase the rich heritage and history behind the precinct through photographs, artefacts, maps, building plans, stamps and philatelic materials that weave the story of the legacy behind the historic buildings of The Fullerton Heritage precinct. A cosy space adjacent to the captivating historic collection is also dedicated as a home to the works of budding artists and photo exhibitions.



EAST GARDEN FOYER GALLERY

THE FULLERTON HOTEL SINGAPORE

Strategically located in the heart of The Fullerton Hotel Singapore, the East Garden Foyer Gallery is the dedicated stage for art collections by international and local artists. Rotating exhibitions are carefully selected to reflect The Fullerton Heritage's commitment to the promotion of arts and culture, making it available for public enjoyment.



THE FULLERTON WATERBOAT HOUSE

LOWER PATIO

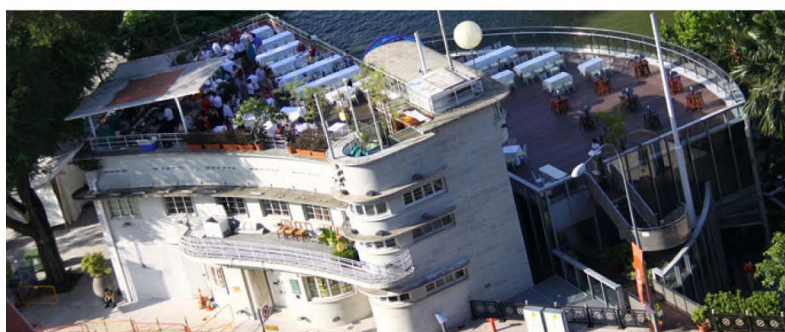
Overlooking Marina Bay and the Esplanade – Theatres on the Bay as well as Singapore’s distinctive arts and civic district, The Fullerton Waterboat House is a historic landmark that has been reinvigorated with a deep appreciation of its classic architectural design, making it an enclave of sophistication for the discerning; a preferred destination for intimate fine dining experiences.

AREA (APPROXIMATE)

1,200 square feet / 111 square metres

CAPACITY

50 pax



THE FULLERTON HOTEL SINGAPORE'S EAST GARDEN

The tranquility of East Garden lends itself to any outdoor celebratory occasion. Its unique charm lies in the subtle touch of chinoiserie, with lion sculptures and a lush shelter of greenery that affords guests privacy in a wide expanse of outdoor space.

CAPACITY

Reception: 200 pax

Theatre: 100 pax



CLIFFORD SQUARE

21,000 square feet of open space with permanent art installations by world-class artists, Clifford Square is the ideal location for creative and unique lifestyle concepts, as well as outdoor exhibitions and displays.

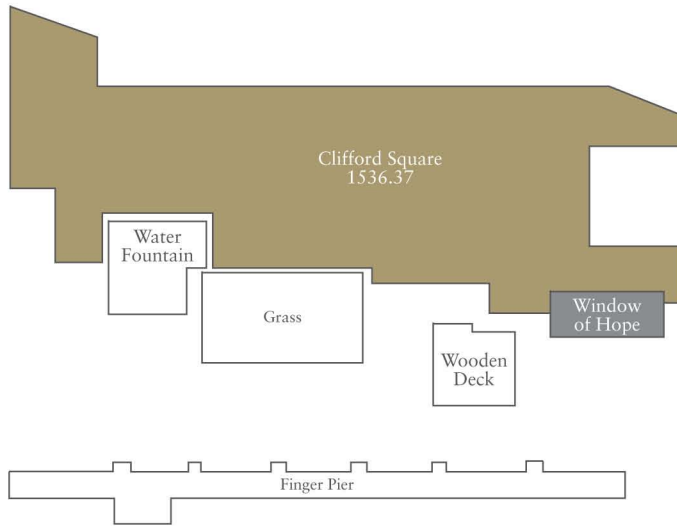
AREA (APPROXIMATE)

21,000 square feet / 1,951 square metres

CAPACITY

Cocktail: 700 – 800 pax

Sit-Down: 250 – 300 pax



ONE FULLERTON ROOFTOP

A graceful, modern two-storey waterfront development blessed with stunning vistas of Marina Bay developments, One Fullerton is perfectly poised to take advantage of the constant flow of tourists, business executives and residents in the area. With its alfresco charm and unique urban promenade, the all-day waterfront dining and entertainment destination is also directly adjacent to the well-recognised historic Merlion Park which is home to the Merlion – Singapore's icon that attracts over 1 million unique visitors every year. This is the focal point for the entire Marina Bay area with vast appeal to tourists and locals alike and a vibrant urban gathering point. It is well served by over 350 parking spaces within a five minutes' walk.

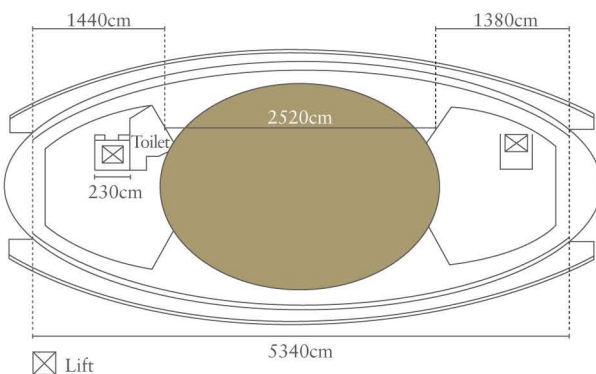
AREA (APPROXIMATE)

3,000 square feet / 279 square metres

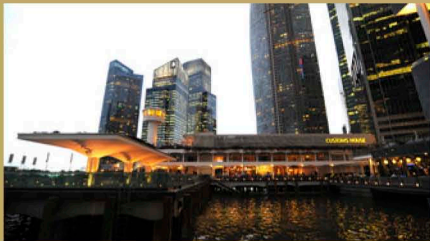
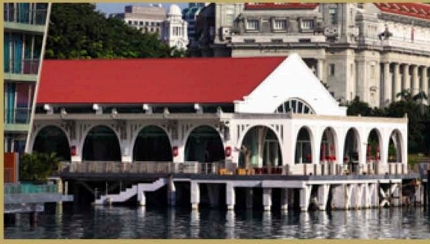
CAPACITY

Cocktail: 230 pax

Sit-Down: 100 pax



OUTDOOR EVENT SPACES



EVENTS AT THE FULLERTON HERITAGE

The Fullerton Heritage is an exquisite dining and hospitality complex with unique event spaces, consisting of The Fullerton Hotel Singapore, The Fullerton Waterboat House, One Fullerton, The Fullerton Pavilion, Clifford Pier, The Fullerton Bay Hotel Singapore and Customs House. This waterfront development's architecture combines the historical with the contemporary, adding vibrancy to the area's rich cultural heritage. It also features one of the longest waterfronts in Singapore, offering unrivalled views of the Marina Bay.

PROMOTIONAL PACKAGES

The Fullerton Hotel Singapore & The Fullerton Bay Hotel Singapore

Privileged room rates will be extended to Local/Overseas guests staying at The Fullerton Hotel Singapore and/or The Fullerton Bay Hotel Singapore for events above 100 persons held within The Fullerton Heritage precinct.

Special Value-add

Complimentary parking will be offered for events (when food is catered from The Fullerton Hotel Singapore or The Fullerton Bay Hotel Singapore), with the number of complimentary coupons being capped at 20% of total number of guests for the event, subject to availability on the date of event.

TERMS AND CONDITIONS

1. The Fullerton Heritage welcomes all outside caterers **except** for catering provided by a hotel other than The Fullerton Hotel Singapore or The Fullerton Bay Hotel Singapore.
2. All such events will be subject to terms and conditions set by the Management of The Fullerton Heritage.

We look forward to assisting you in presenting unique events in our distinctive spaces. For enquiries, please call (65) 6877 8938 or email fullertonheritage@fullerton-heritage.com.

