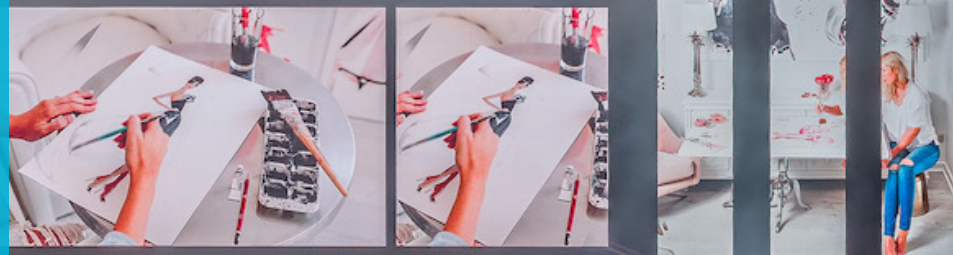


# MAGNIFIQUE MEETINGS



SOFITEL  
BRISBANE CENTRAL





# CONTENTS

THE HOTEL

CONFERENCE PACKAGES

BREAKFAST AND REFRESHMENT BREAKS

LUNCH AND DINNER

COCKTAIL

BEVERAGE

CAPACITY

AUDIO VISUAL



# ACCOMMODATION

## 379 LUXURIOUS ROOMS & 37 SUITES

Luxurious interior spaces that offer relaxation in the heart of Brisbane City. Savour exceptional views from the iconic ANZAC square, to our exquisite city skyline and the famed Sunshine Coast hinterland.





## RESTAURANTS & BARS

### SUZETTE

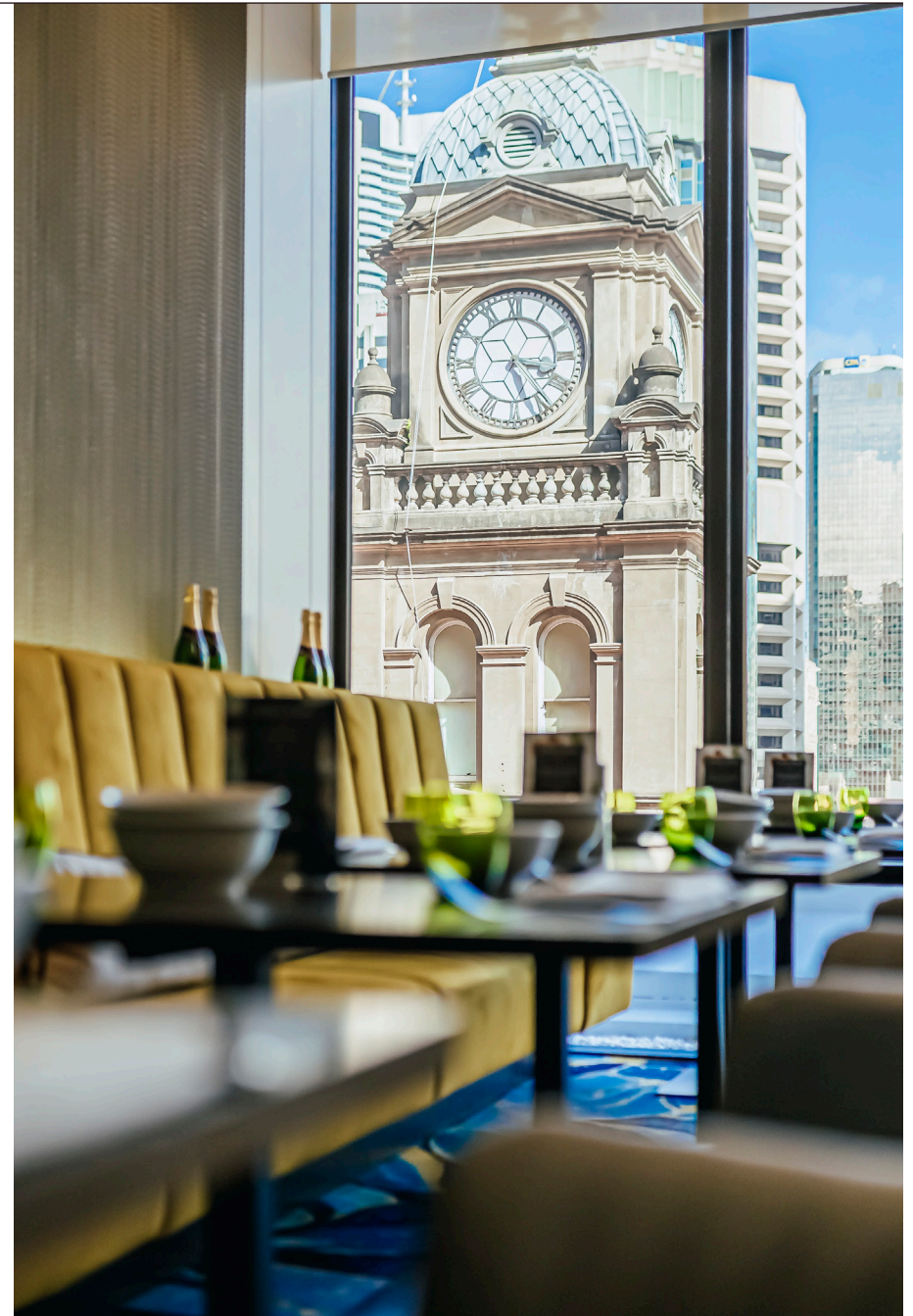
Suzette delivers a unique all-day a la carte dining experience, infusing worldwide culinary trends with the sophistication of Brisbane and its cuisine.

We hope to deliver an indulgent dining experience through our passion for service and providing unforgettable moments for our guests, Suzette offers diners the perfect place to relax, indulge, and celebrate.

### CUVÉE

At Cuvée discerning tastes are indulged with vintage and non-vintage labels from the world's great Champagne houses, complemented by a connoisseur's selection of Australian, European and New World wines and bespoke cocktails.

By day, the lounge is a popular meeting place to enjoy coffee and a European inspired all-day menu.



## SERVICES

- Brisbane's largest hotel meeting and event venue
- Meeting rooms accommodating events of up to 1,100 delegates
- State-of-the-art Audio Visual Partner (AV Partners)
- Elite High Performance Gymnasium
- Stephanies Spa Retreat
- Swimming Pool and Spa
- SoFit Gymnasium
- 24-Hour Reception
- 24-Hour In-Room Dining
- Guest Laundry





# CONFERENCE PACKAGES

## LUXURY MEETING PACKAGE

Arrival tea and espresso/pod machine coffee

Morning tea including espresso/pod machine coffee and tea with two break food items

Working lunch served with espresso/pod machine coffee, tea soft drinks and juice with your choice of a served buffet or boxed lunch

Afternoon tea including espresso/pod machine coffee and tea with two break food items

Whiteboard or flipchart

Sofitel notepads and pens

Chilled water and individually-wrapped mints

## MAGNIFIQUE PACKAGE

Arrival tea and espresso/pod machine coffee with one break food item

Morning tea including espresso/pod machine coffee and tea with two break food items

Working lunch served with espresso/pod machine coffee, tea, soft drinks and juice with your choice of a served buffet or boxed lunch

Afternoon tea including espresso/pod machine coffee and tea with two break items

Whiteboard or flipchart

Sofitel notepads and pens

Chilled bottled still and sparkling water with individually-wrapped mints and sweets



# BREAKFAST AND BREAKS

## CHEF'S BREAKFAST

MINIMUM OF 30 GUESTS

## BREAKS

### MORNING AND AFTERNOON TEA

Chef's selection of 1 savoury and 1 sweet item, tailored to all dietaries, served with freshly brewed coffee and a selection of traditional, infused and herbal tea.

### COFFEE AND TEA

Freshly brewed coffee and a selection of traditional, infused and herbal teas

½ Hour, 4 Hours & 8 Hours Available

### BARISTA CART

A barista cart is available to add to any conference or event.

Half-Day & Full-Day Barista Service Available

### UPGRADE OPTIONS

Additional Break Item

Soft Drinks & Fruit Juices

Sofitel Smoothie of the Day

Whole Seasonal Fruit

## MAGNIFIQUE BREAKS

MINIMUM OF 30 GUESTS





## LUNCH AND DINNER

### MINIMUM OF 30 GUESTS

#### PLATED LUNCH OR DINNER

2 or 3 Courses Available

Alternate Drop Available (per person, per course)

All plated lunches and dinners include freshly baked bread rolls, tea and coffee.

#### BUFFET LUNCH AND DINNER

Freshly baked bread rolls, salads, hot dishes, seasonal fruit and desserts

Served with tea and coffee.

#### BARBEQUE BUFFET

Chefs selection of freshly baked bread rolls, antipasto, salads, barbeque selection and desserts. Served with tea and coffee.





## COCKTAIL RECEPTIONS

### MINIMUM OF 30 GUESTS

#### CANAPÉS

##### CLASSIC SELECTION

Choice of 2 hot and 2 cold canapés served over half an hour.

##### EXECUTIVE SELECTION

Choice of 3 hot and 3 cold canapés served over one hour.

##### PREMIER SELECTION

Choice of 3 hot and 3 cold canapés served over one and half hours.

##### LUXURY SELECTION

Choice of 3 hot and 3 cold canapés served over two hours.

Additional Options Available

#### FORK DISHES

Additional fork dishes available to add to your canapé selection



## BEVERAGE PACKAGES

### **SUPERIOR BEVERAGE PACKAGE**

#### **SELECT TWO WINES AND TWO BEERS**

Legacy Brut - Legacy Sauvignon Blanc - Legacy Chardonnay - Legacy Pinot Grigio  
- Legacy Cabernet Merlot - Legacy Shiraz Cabernet - Legacy Rosé

Byron Bay Lager - Hahn Premium Light - XXXX Gold - Heineken Zero

Soft drinks and juices

**1 to 5 Hours Available**

### **LUXURY BEVERAGE PACKAGE**

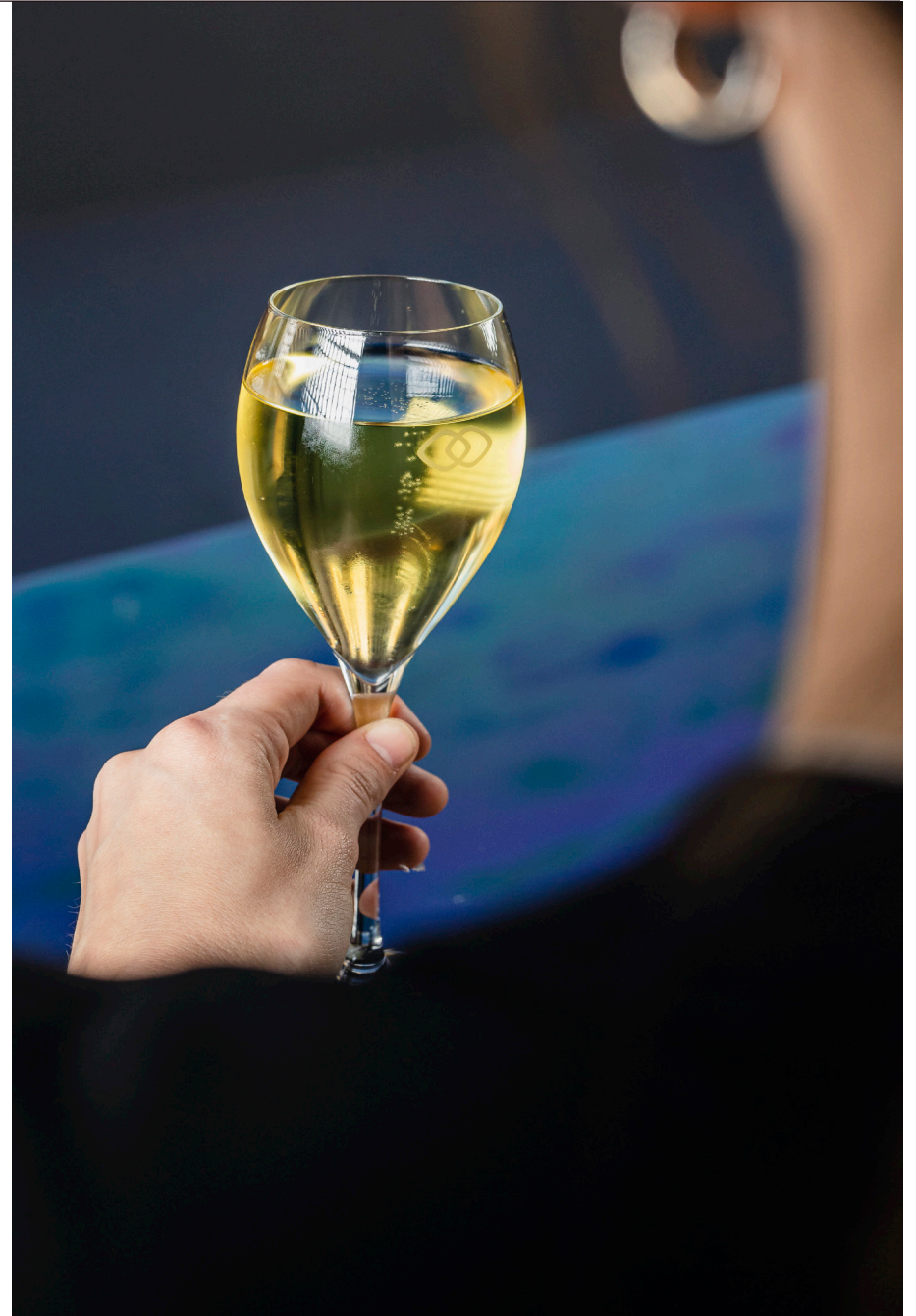
#### **SELECT TWO WINES AND THREE BEERS**

Munro Valley Sparkling Brut - Kismut Moscato - The Falls Sauvignon Blanc  
- Aquilani Pinot Grigio - Credaro Five Tales Chardonnay - ALTA Pinot Noir -  
Bruno Shiraz - Reverie Rosé

Eumundi Lager - Hahn Premium Light - James Squires Swindler - James Squires  
Mid Strength - Heineken 3 - Heineken Zero

Soft drinks and juices

**1 to 5 Hours Available**





# BEVERAGE PACKAGES

## DELUXE BEVERAGE PACKAGE

### SELECT TWO WINES AND THREE BEERS

Veuve Ambal - Felines Jourdan Picpoul - Fringe Societe Grenache Blanc -  
Reverie Chardonnay - Reverie Pinot Noir - Rameau d'Or Petit Amour Rosé  
- Alain Jaume Cotes Du Rhone 'Grand Veneur' - Vincent Paris Syrah

Kirin Lager - James Squire 150 Lashes - Hahn Premium Light -  
Heineken 3 - Heineken Zero

Soft drinks, juices and sparkling water

1 to 5 Hours Available

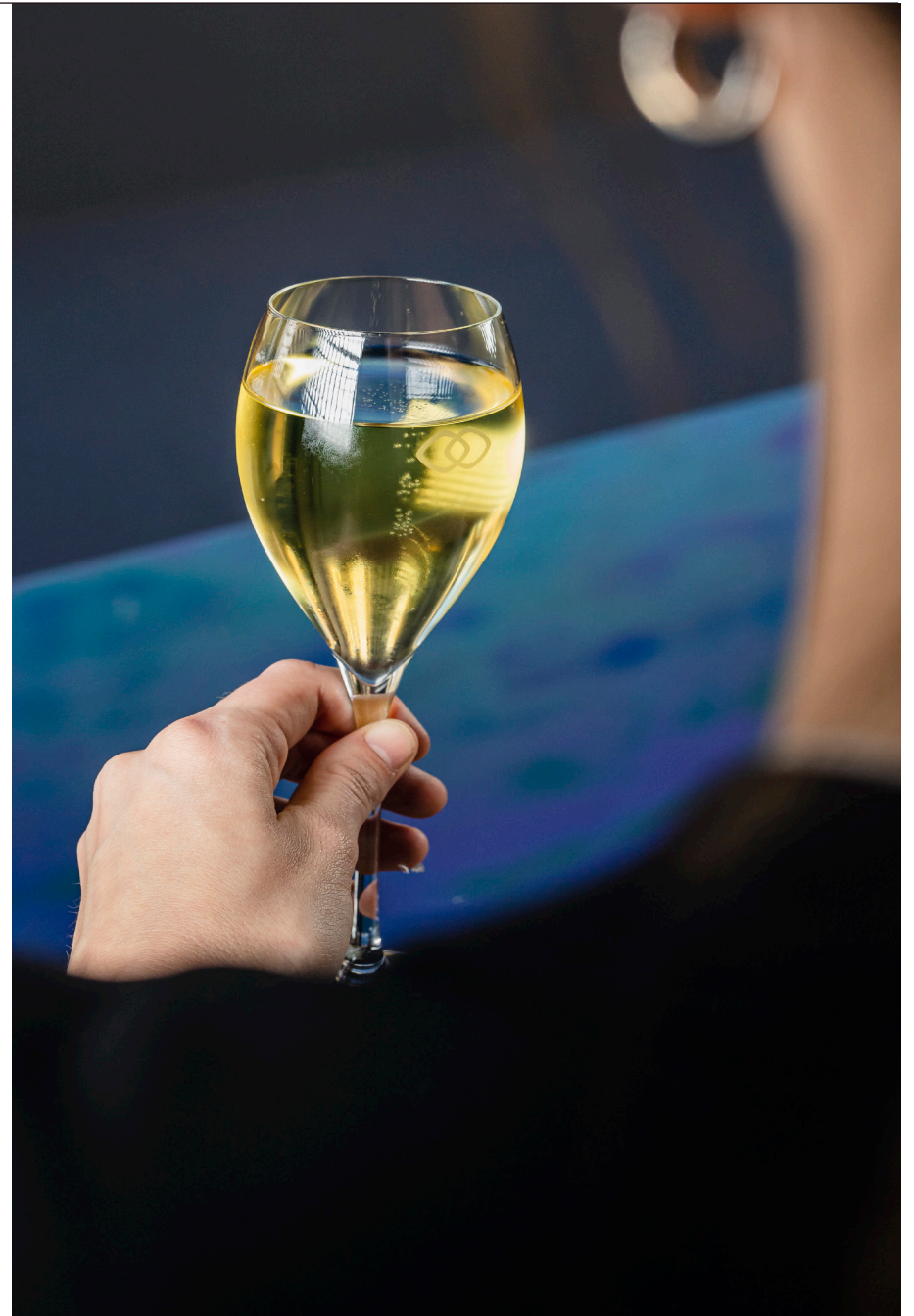
## SPIRITS

### ADD ON TO ANY BEVERAGE PACKAGE

Absolut Vodka - Malfy Gin - Barcardi Rum - Bundaberg Rum  
- Chivas Regal 12 Yr - Wild Turkey Bourbon

1 to 4 Hours Available

All served with post-mix mixer.



# BEVERAGE PACKAGES

## NON-ALCOHOLIC COCKTAILS

### ADD ON TO ANY BEVERAGE PACKAGE

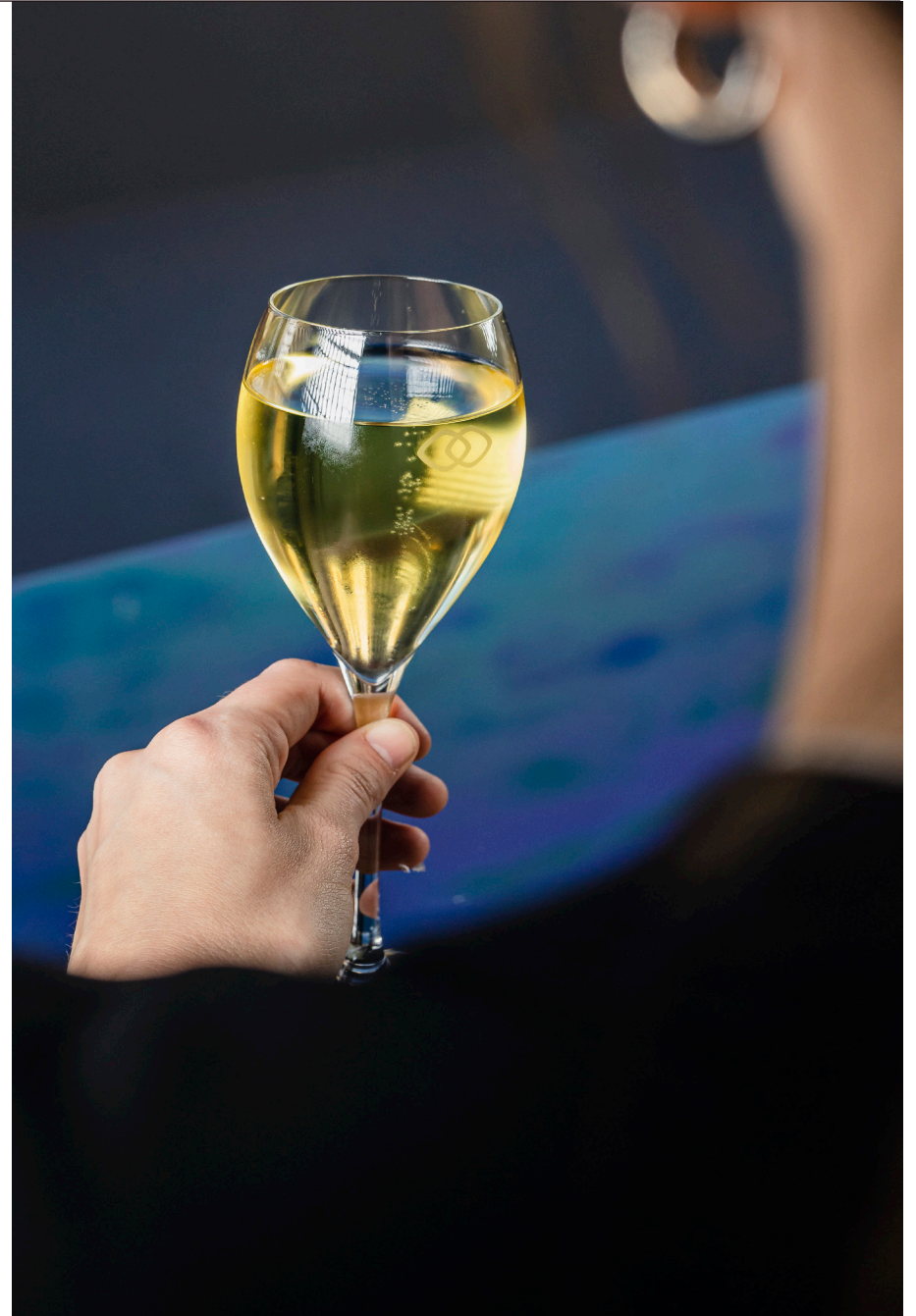
Amalfi Spritz - Lyre's Amaretto Sour - Lyre's Americano - Lyre's Rosso & Tonic

1 to 4 Hours Available

## SOFT DRINKS

Inclusive of soft drinks and juices.

1 to 4 Hours Available





# CAPACITY AND FLOOR PLAN



FUNCTION ROOM	SURFACE M²	HEIGHT M	CLASSROOM	CABARET	THEATRE	U-SHAPE	BOARDROOM	DINNER
BALLROOM LE GRAND	798	6.5	550	440	1056	-	-	580
BALLROOM THREE	331.8	6.5	252	176	400	-	-	220
BALLROOM TWO	254.1	6.5	216	136	300	-	-	170
BALLROOM ONE	212.1	6.5	120	112	200	-	-	140
ANN STREET LOBBY	450	2.8	-	-	-	-	-	-
REGISTRATION LOBBY	198	6.5	-	-	-	-	-	-
ST GERMAIN	63.51	2.7	30	32	50	18	18	40
BASTILLE	106.24	2.7	72	48	90	39	39	60
BASTILLE ONE	49.92	2.7	24	24	40	15	15	20
BASTILLE TWO	56.32	2.7	24	24	40	15	15	20
CONCORDE	80.5	2.7	45	40	70	24	24	50
ODEON	128	2.4	81	64	100	36	40	80
SOIREE	143	-	-	-	-	-	-	150
LYON	240	3	126	112	230	-	-	140
LYON ONE	112.8	3	54	48	108	36	24	60
LYON TWO	127.2	3	63	64	120	36	30	80
NORMANDY	18.24	2.4	-	-	-	-	8	8
BORDEAUX	12.8	2.4	-	-	-	-	6	6

## AUDIO VISUAL

Sofitel Brisbane Central's production is managed in-house by AV Partners, Australia's most experienced, innovative and professional audio visual organisation.

The AV Partners team work alongside the Sofitel Brisbane Central Conference and Events department to ensure a flawless five-star event experience for yourself and each of your delegates.

For any enquiries please contact our on-site Audio Visual Manager Brendon Biffin on +61 (07) 3835 4731

**AVPartners**™





S O F I T E L

BRISBANE CENTRAL

249 TURBOT STREET - BRISBANE CITY - QUEENSLAND 4000

TEL. +61 (7) 3835 3535 - [H5992@SOFITEL.COM](mailto:H5992@SOFITEL.COM)

[WWW.SOFITELBRISBANE.COM.AU](http://WWW.SOFITELBRISBANE.COM.AU)

PRICING AND MENUS WITHIN THIS DOCUMENT ARE SUBJECT TO CHANGE