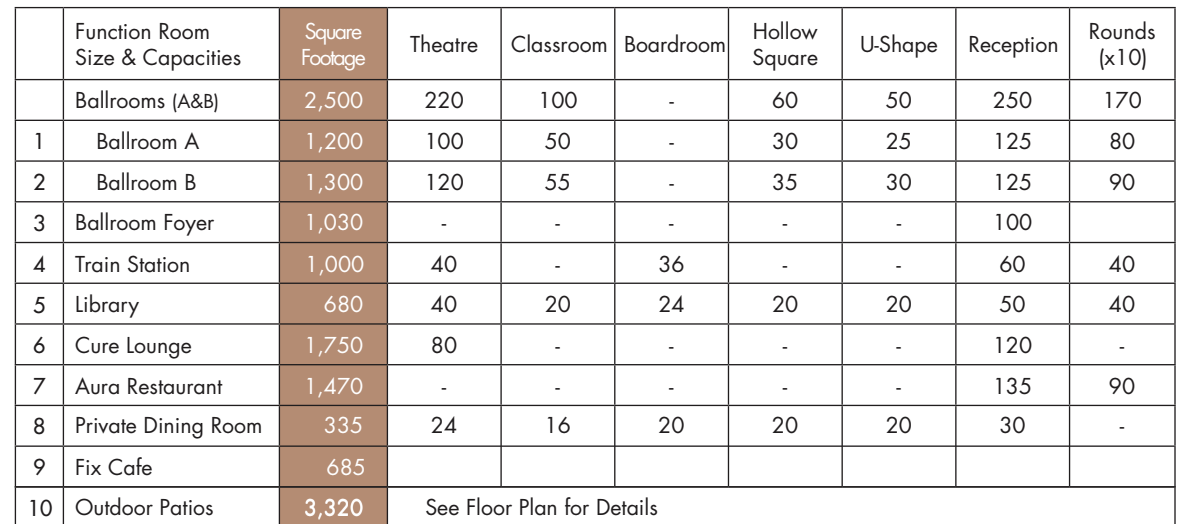




Welcome your attendees to an inspiring mountain and lake setting, perfect for team and personal development. With customized service and attention to detail, Nita Lake Lodge has a genuine desire to be a part of your program's success. Whether you're planning a board retreat for 20 or an awards banquet for 150, you can count on it being an unparalleled Whistler experience.





NITA LAKE LODGE



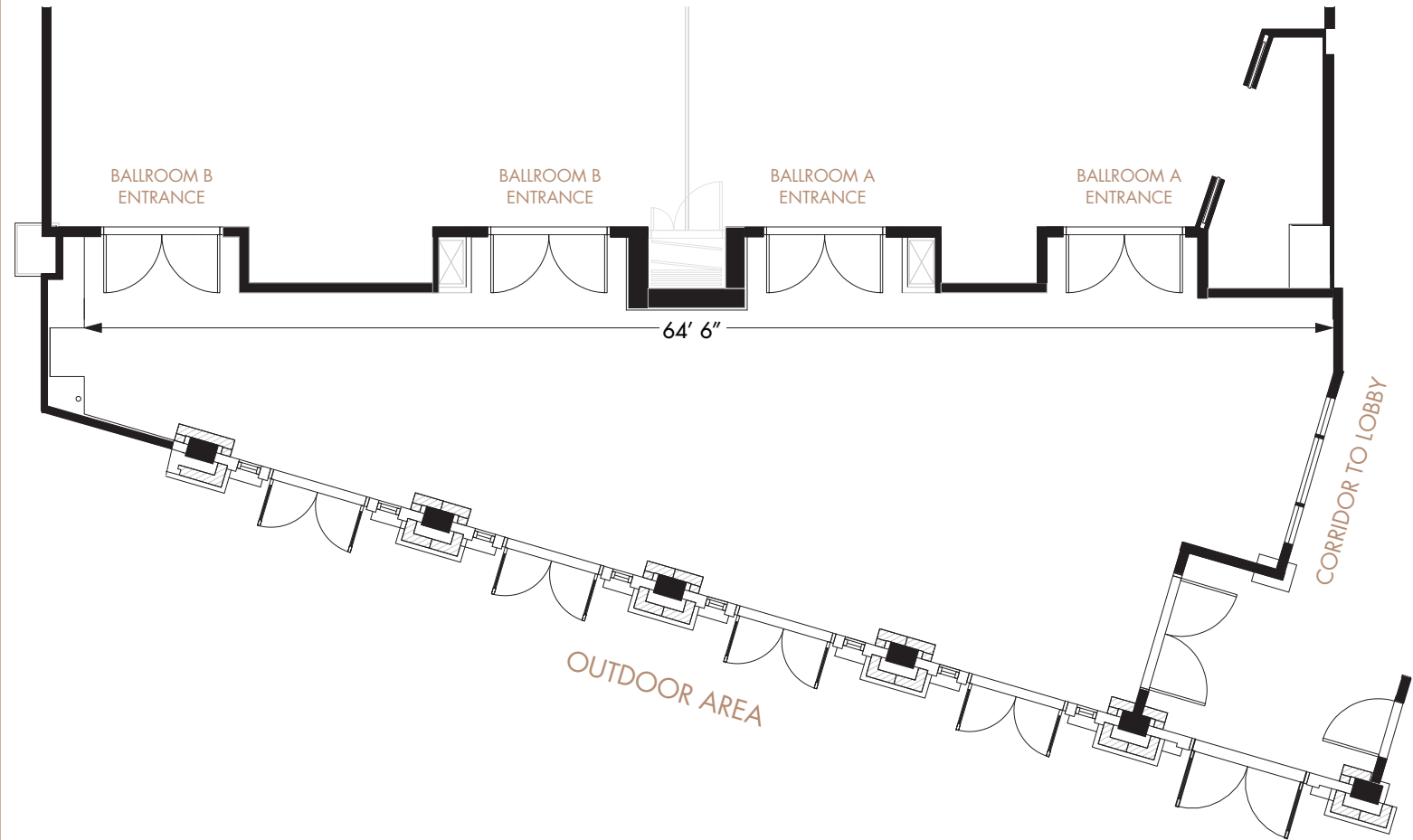
BALLROOMS

Ballroom A & B: 2,500 sq.ft.
Ballroom A: 1,200 sq.ft.
Ballroom B: 1,300 sq.ft.
Ceiling Height: 10 ft

BALLROOM FOYER
(PRE-FUNCTION LOBBY)



NITA LAKE LODGE

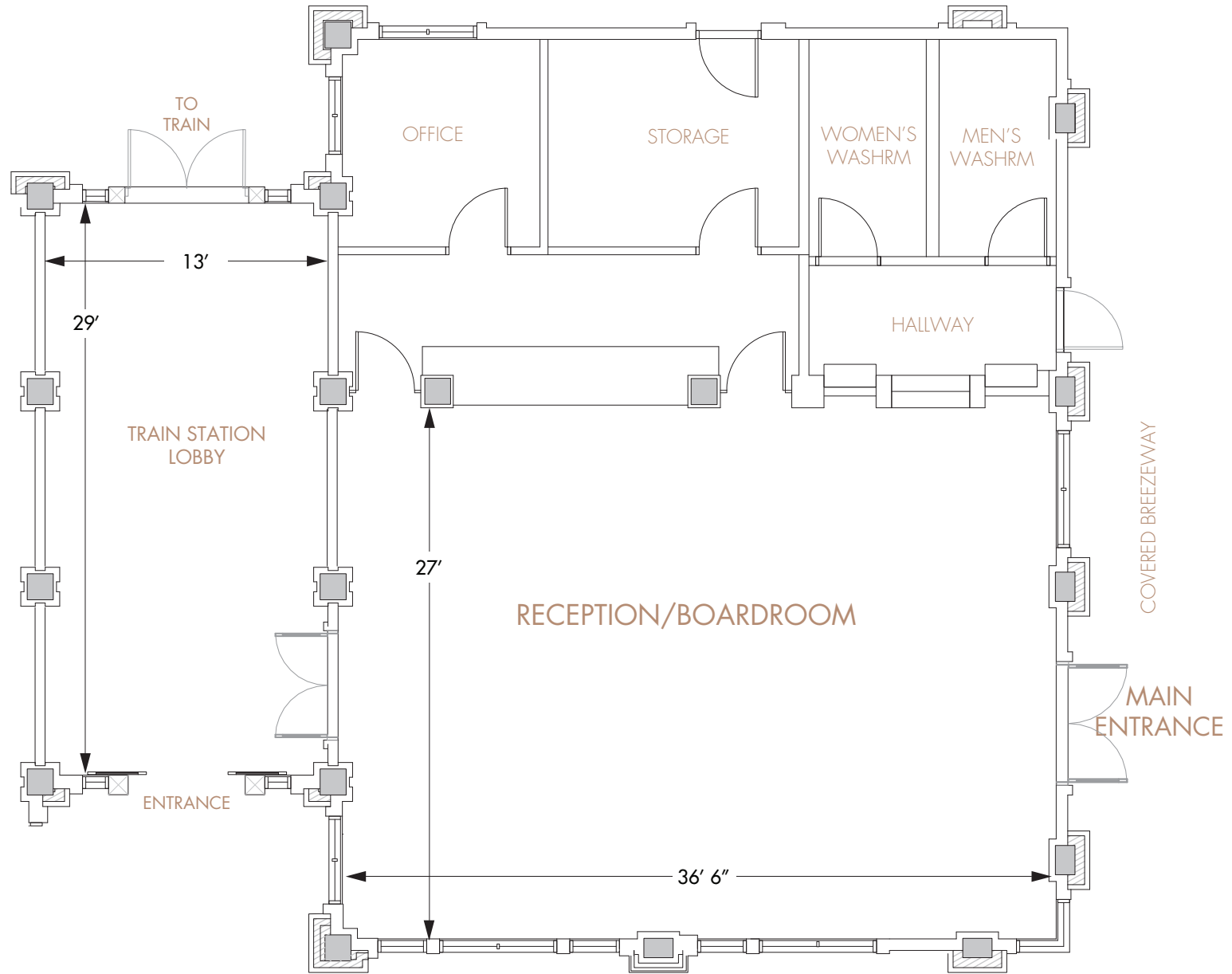


BALLROOM FOYER

Total Area: 1,030 sq.ft.
Ceiling Height: 10 ft. (3m)



NITA LAKE LODGE



TRAIN STATION

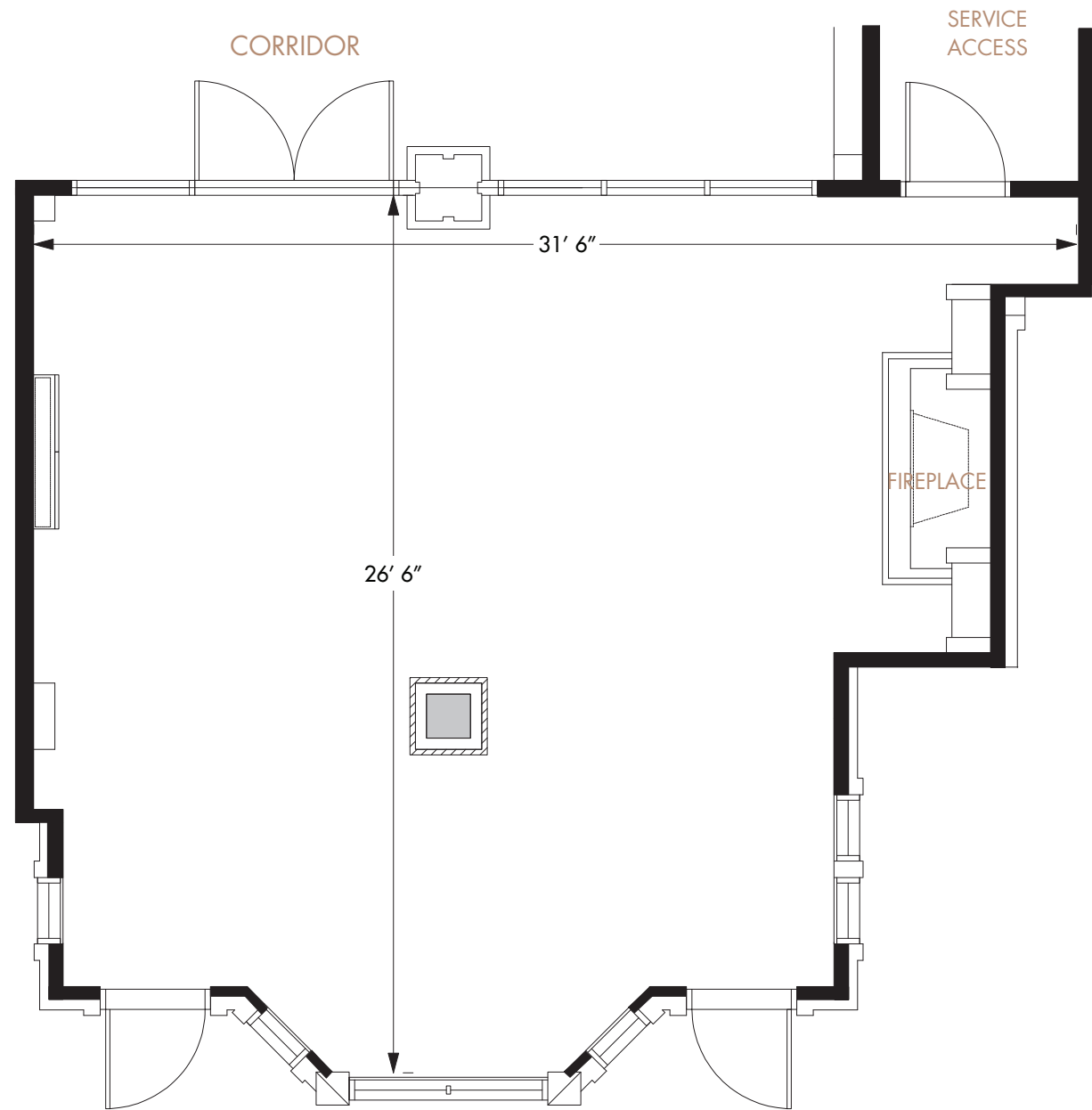
Main Room Area: 1,000 sq.ft.
Lobby Area: 375 sq.ft.
Ceiling Height: 10 ft. (3m)



NITA LAKE LODGE

THE LIBRARY

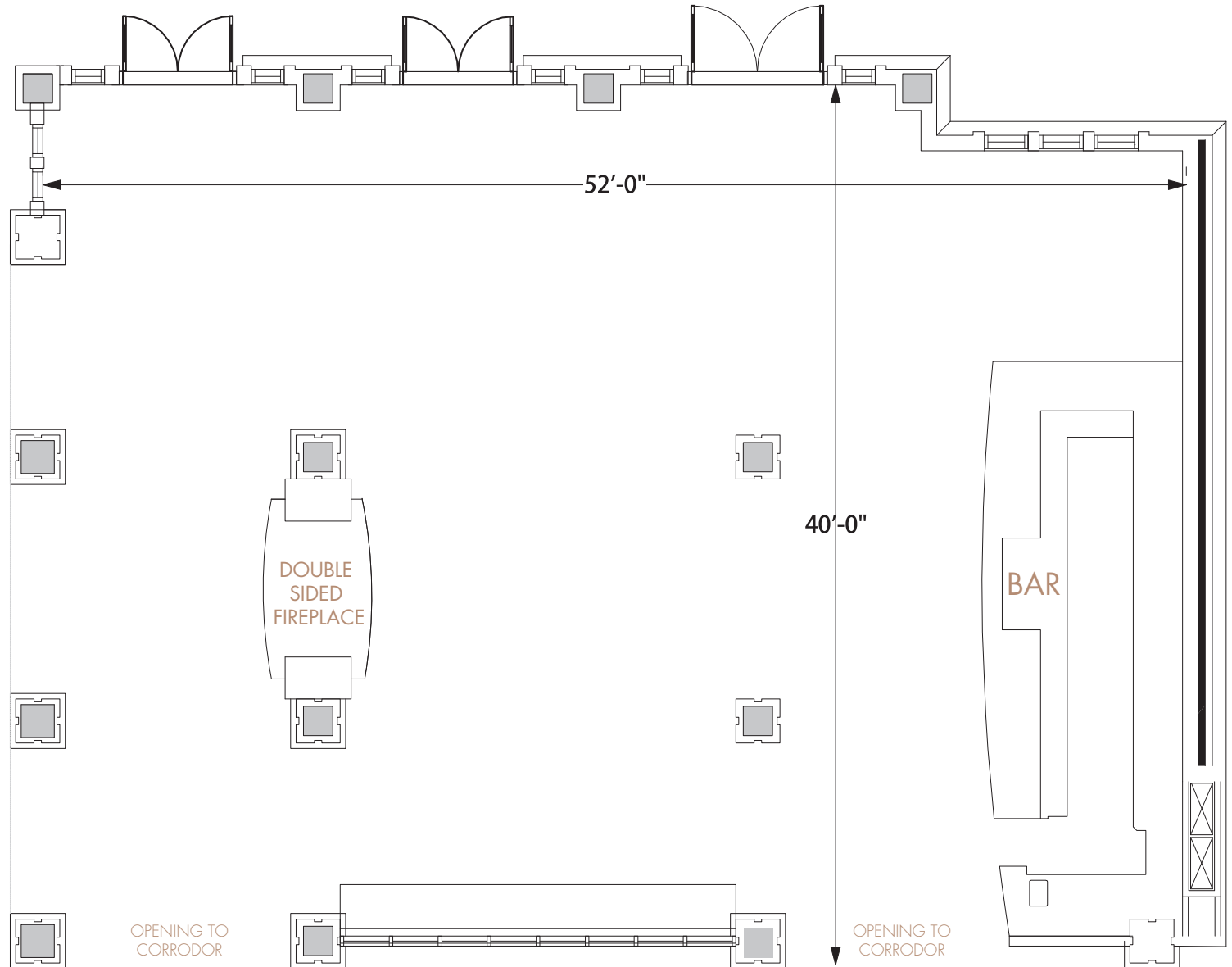
Total Area: 680 sq.ft.
Ceiling Height: 11 ft. 9 in





NITA LAKE LODGE

CURE PATIO AND OUTDOOR AREA

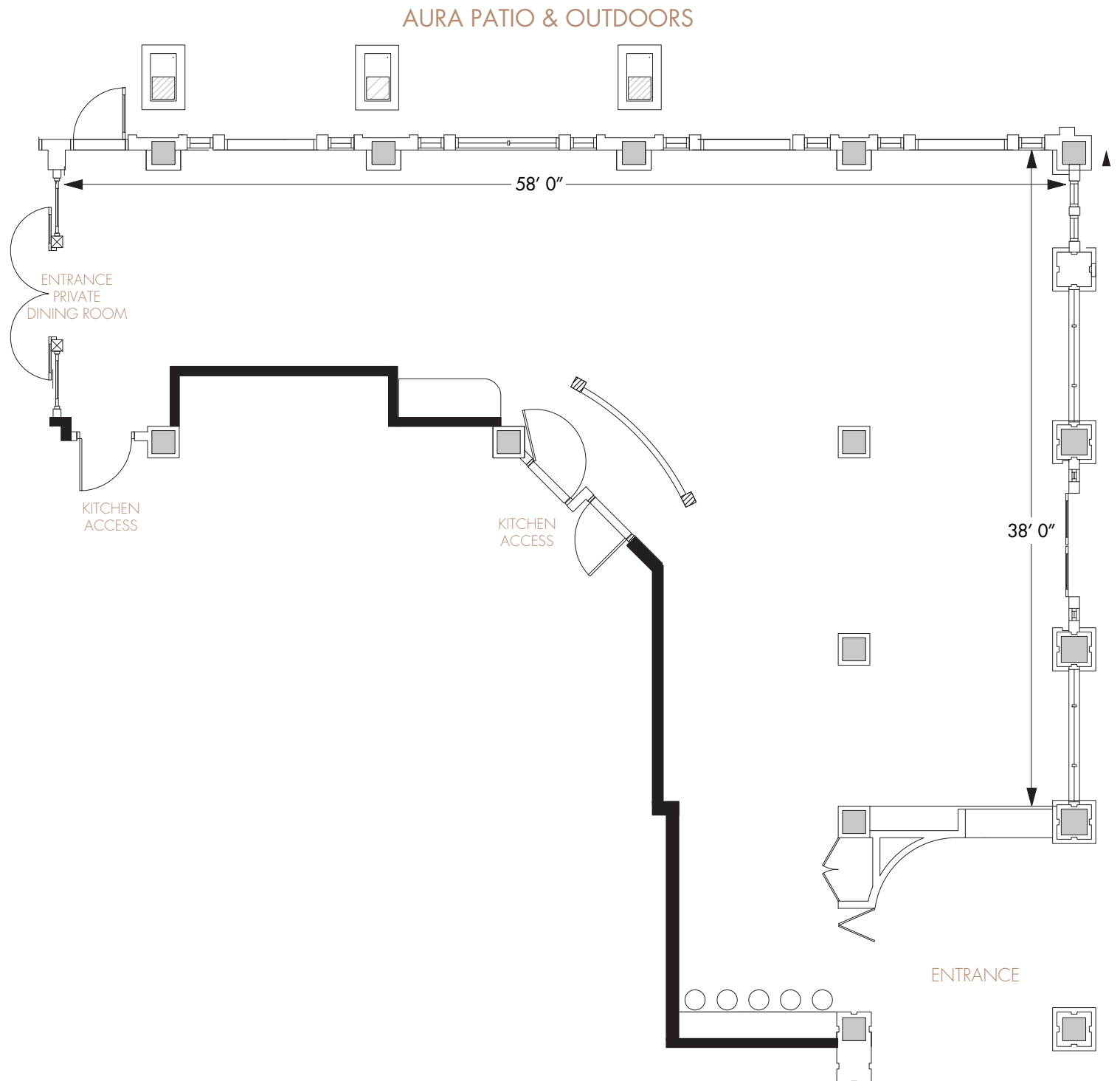


CURE LOUNGE

Total Area: 2,050 sq.ft.
Usable Area: 1,750 sq.ft.
Ceiling Height: 11 ft. 9 in

AURA RESTAURANT

Total Area: 1,470 sq.ft.
Ceiling Height: 11 ft. 9 in

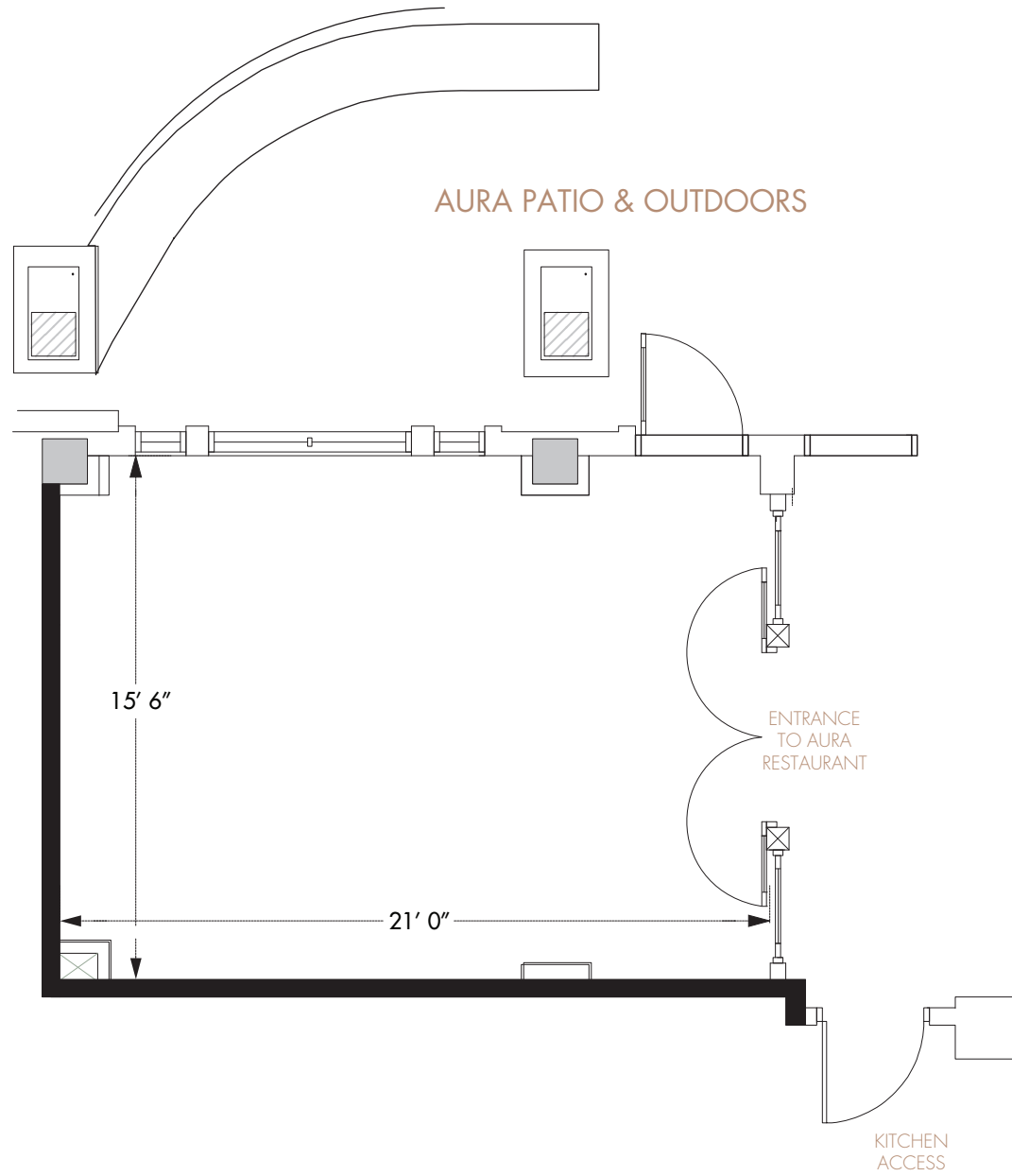


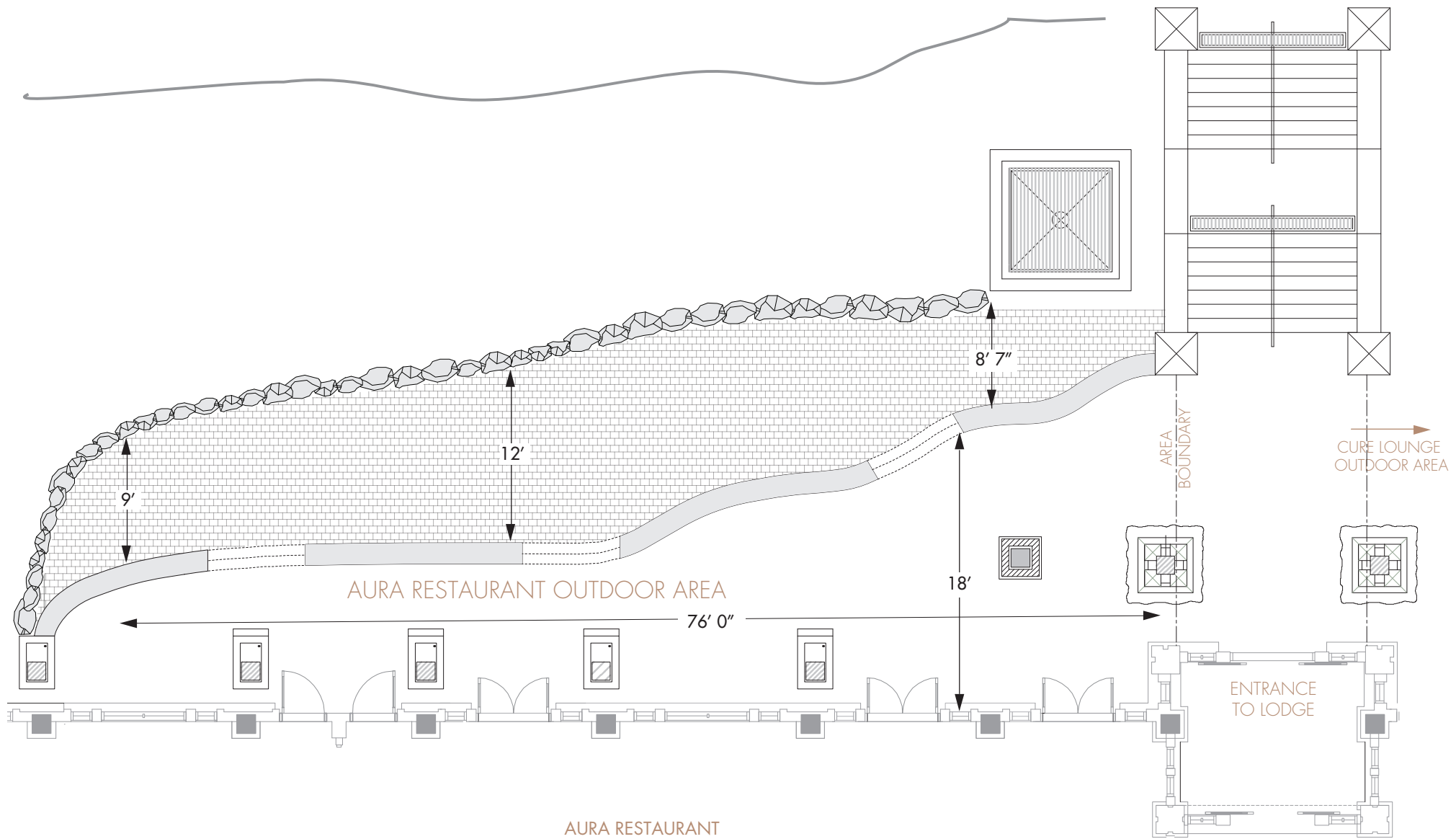


NITA LAKE LODGE

PRIVATE DINING ROOM

Total Area: 335 sq.ft.
Ceiling Height: 11 ft. 9 in





NITA LAKE
LODGE

AURA OUTDOOR AREA

Total Outdoor Area: 1,060 sq.ft.