

Healthium Clinics

HEALTHIUM CLINICSGARDEN COTTAGE, BADGEMORE PARK, HENLEY-ON-THAMES, OXON, RG9 4NR



TABLE OF CONTENTS

1.	Ashmira Botanica Facials	Page 3 – 4
2.	Ashmira Botanica Hair Removal [Waxing]	Page 5
3.	Tinting: Eyebrows & Eyelashes	Page 5
4.	Noon Aesthetics Facials	Page 6
5.	Thuzzle Multi-Wave Body Rejuvenation	Page 6
6.	Anti-Wrinkle Injections	Page 7
7.	Volumising Dermal Fillers	Page 7
8.	Micro Needling	Page 7
9.	PRP Therapy	Page 8

ASHMIRA BOTANICA FACIALS

ASHMIRA BOTANICA HEAVENS FLOWER

Luxurious five elements facial to improve facial vitality, radiance and brighten the complexion by exfoliation, acupressure massage, lymphatic drainage and crystal therapy.
60 mins
£70



Choose one of our Five Element facials to balance your own personal energies from the inside out. Each facial imparts vitality and radiance to your skin as well as creating inner calm from within. Your face will be deeply cleansed and then exfoliated to help to instantly brighten your skin. Our lymphatic drainage and acupressure massage will then help you to deeply relax, followed by one of our Five Element masks, cream and elixir chosen especially for you and whatever you need at this time. Each facial has a sensory addition to balance your specific element, choose from:

Wood - crystals are incorporated to brighten and soothe your eyes.

Fire - pure, ceremonial cacao is drunk to energise and invoke the sense of taste.

Earth - a foot massage soothes anxiety and gives you the sense of touch.

Metal - a facial steam with essential oils balances your sense of smells.

Water - sound creates ease and balance for your sense of hearing.

ASHMIRA BOTANICA PURE ALCHEMY

Youth Boosting Facial incorporating all 5 Elements, back exfoliation meridian massage.
60 mins
£100



Unwind with this luxurious facial that helps to ease away your tension and stress to create inner harmony that will be reflected in your skin. Your back will be exfoliated with ground rice powder and then an acupressure and meridian massage helps stimulate and balance your emotions. Your face will then be deeply cleansed, receive two massages with tourmaline crystal powder and our special oil blends to balance yin and yang energies in your skin and help soften lines and wrinkles. Our facial cups help to remove toxins and after a personalised elemental mask and rose quartz rollers, your skin will be radiant and glowing with renewed energy.

ASHMIRA BOTANICA INNER BLISS

Meridian body massage with full body exfoliation, cacao drink and foot soak
90 mins
£120



The ultimate in body treatments which incorporates techniques to balance each of the Five Elements to help create peace and harmony and impart inner peace. Your journey will begin with a foot soak and cup of ceremonial cacao to drink. You will then be exfoliated with pure rice powder and hydrating aloe to remove dead skin cells and smooth and soften your skin. Our Chinese inspired massage moves energy through a series of channels known as meridians which lie beneath the surface of your skin, whilst acupressure points clear energy blocks to give you deep peace and relaxation. Choose from either our Yin or our Yang blend of synergistically blended essential oils to either uplift or deeply relax you. Strategically placed crystals help to enhance your experience and a sound bowl helps create a state of ease and harmony within your body. You are left smooth, soft and renewed.

The Organic Raw Ceremonial Cacao is drunk at the beginning of some of our treatments. happy chemicals - serotonin, tryptophan, tyrosine and phenylethylamine.

We include it in our treatments to help you journey within and connect with your emotional heart to uplift, help heal your emotions and leave you with a feeling of uttermost bliss.

ASHMIRA BOTANICA FACIALS

ASHMIRA BOTANICA INNER ZEN

Meridian body massage
60 mins
£70



Evolve feeling positive and energised from this full body massage which helps balance mind, body and spirit. Energy is moved through a series of channels known as meridians which lie beneath the surface of your skin whilst acupressure points clear energy blocks to give you deep peace and relaxation. Choose from either our Yin or our Yang blend of synergistically blended essential oils to either uplift or deeply relax you.

ASHMIRA BOTANICA ELEMENTAL BODY EXFOLIATION

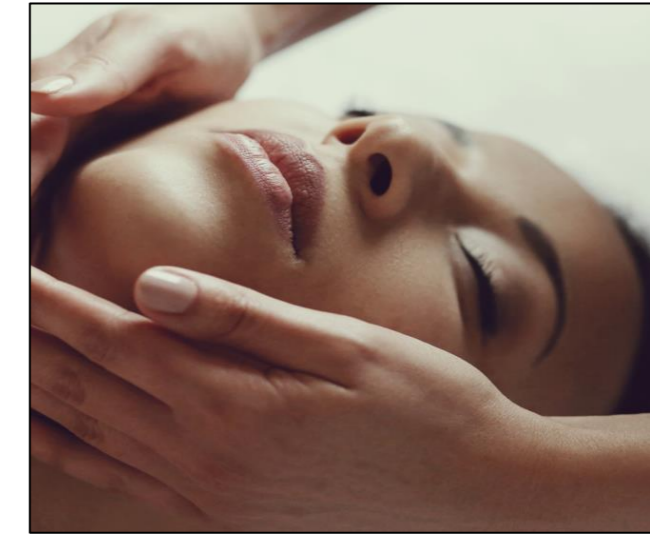
Full body skin softening
30 mins
£40



Your skin softening experience begins with a foot soak and head massage. Your dry skin is then buffed away with a blend of rice powder, aloe, and your chosen Elemental Elixir to help stimulate blood and lymph flow and leave your skin silky, smooth and radiant.

ASHMIRA BOTANICA RELAX & REJUVINATE MINI FACIAL

Using luxury balancing oils for your face, skin type & conditions
30 mins
£40



Ideal for those with a busy lifestyle needing a little time out. Indulge your skin with a deep cleanse using beautiful scented rose oil and buffing away dull skin cells with a blend of rice powder, leaving a healthy glowing complexion. Followed by a relaxing facial massage and a nourishing, hydrating and detoxing facial clay powder mask. Perfect before any occasion.

ASHMIRA BOTANICA HAIR REMOVAL [WAXING]

Ashmira Botanica Waxes and products are organic, vegan-friendly, and completely cruelty free. Every product is founded on a base of three natural oils and butters: argan oil, hazelnut oil and cupuacu butter, which have been picked for their amazing ability to nourish, repair, and protect the skin.

Some of the amazing ingredients used in the Ashmira products are, "Refreshing cucumber, mandarin with basil, and exotic orange and sandalwood are just some of the lovely aromas in the product range – giving a Spa like feel to Waxing!

ASHMIRA EXPRESS MINI FACIAL WITH WAXING

This treatment is great for making your regular waxing maintenance a relaxing experience.

This treatment includes a calming facial cleanse, removed with lovely warm mitts, a facial steam, eyebrows, and upper lip wax followed by a soothing mask and red LED light therapy (this will help to reduce the redness and inflammation).

Enjoy our unique way of facial waxing.

30 mins
£55



Treatment Area	Duration	Price
Eyebrows	15 mins	£18
Lip Wax	15 mins	£15
Chin Wax	15 mins	£15
Under Arm	30 mins	£15
Lower Arm	30 mins	£22
Full Arm	30 mins	£33
Front Torso	70 mins	£48
Back Torso	70 mins	£48
Bikini Line	20 mins	£21
High Bikini	30 mins	£32
Hollywood	70 mins	£46
Brazilian	70 mins	£40
Male Intimates	60 mins	£68
Upper Leg	30 mins	£35
Lower Leg	60 mins	£28
Full Leg	60 mins	£60

TINTING: EYEBROWS & EYELASHES

30 mins

Description	Price	Description	Price
Eyelash Tint	£17	Eyebrow Shape	£12
Eyebrow Tint	£14	Eyebrow Shape & Tint	£22
Eyelash & Brow Tint	£24	Eyebrow & Eyelash Tint Eyebrow Shape	£36

**Patch testing required 24hrs prior to treatment*

NOON AESTHETICS FACIALS

Noon Aesthetics Chemical Peels are unique due to the additive **DermShield™**.

When chemical irritants such as Azelaic acid or alpha hydroxyacids (AHAs) that are included in high concentrations in skin peels along with other skin products, nerve fibres called type c nociceptors are activated.

HEALTHIUM CLINICS NOON SIGNATURE FACIAL [NON-PEEL]	HEALTHIUM CLINICS NOON EXPRESS FACIAL [NON-PEEL]	NOON AESTHETICS SKIN PEEL								
<p>This treatment is an intensive introduction to result driven, clinical skin care, which includes a deep cleanse, a thorough skin analysis, exfoliation with brightening, hydrating and softening lactic acid, and a relaxing face massage to ease tired facial expressions and muscles. Your facial concludes with a lifting, cooling, hydrating and purifying mask for ultimate skin rejuvenation, Vitamin C serum, sunscreen, a personalised skin care program and treatment plan. Suitable for all skin types and conditions.</p> <p style="text-align: center;">60 mins £90</p>	<p>This booster facial is an introduction to the world of Noon rejuvenating clinical skincare for ultimate results, changing your complexion within minutes. Starting with a deep cleanse, skin brightening exfoliation, and lymphatic drainage to revive tired facial expressions, concluding with a treatment moisturiser and sunscreen for glowing skin and protection. Ideal for those who are new to clinical treatments pre- party, special occasions and those with a busy lifestyle. Suitable for all skin types, conditions and teenagers too.</p> <p style="text-align: center;">30 mins £40</p>	<p>Your peel protocol will be based on the completion of a thorough skin analysis and questionnaire and tailor made for you once your needs and skin health have been assessed by one of our highly trained skincare experts. This innovative product line will lead to impressive results and skincare solutions for various skincare problems and concerns.</p> <p style="text-align: center;">60 mins</p> <table style="margin-left: auto; margin-right: auto;"> <tr> <td>Course of 1</td> <td>£125</td> </tr> <tr> <td>Course of 2</td> <td>£200</td> </tr> <tr> <td>Course of 3</td> <td>£300</td> </tr> <tr> <td>Course of 6</td> <td>£570</td> </tr> </table>	Course of 1	£125	Course of 2	£200	Course of 3	£300	Course of 6	£570
Course of 1	£125									
Course of 2	£200									
Course of 3	£300									
Course of 6	£570									

THUZZLE MULTI-WAVE BODY REJUVENATION

Thuzzle is a multiple and combined thermal energies that compose the “puzzle of beauty” for a complete rejuvenation of the body using high-frequency electromagnetic waves.

THUZZLE FOR FACE & NECK TIGHTENING	THUZZLE FOR FACE, NECK & DECOLLTAGE TIGHTENING	THUZZLE FOR BODY CONTOURING																		
<p>Thuzzle skin tightening results in the smoothing of fine lines and wrinkles, overall tightening of face and neck region, dermal volumizing, periorbital, perioral and neck lifting and overall targeting of the visible signs of aging to lift, smooth, tighten, and revitalise for a more youthful look to the skin.</p> <p style="text-align: center;">30 mins</p> <table style="margin-left: auto; margin-right: auto;"> <tr> <td>Course of 1</td> <td>£130</td> </tr> <tr> <td>Course of 4</td> <td>£495</td> </tr> <tr> <td>Course of 6</td> <td>£699</td> </tr> </table>	Course of 1	£130	Course of 4	£495	Course of 6	£699	<p>Thuzzle face tightening results in the smoothing of fine lines and wrinkles, overall tightening of face and neck region, dermal volumising, periorbital, perioral and neck lifting and overall targeting of the visible signs of aging to lift, smooth, tighten, and revitalise for a more youthful look to the skin.</p> <p style="text-align: center;">30 mins</p> <table style="margin-left: auto; margin-right: auto;"> <tr> <td>Course of 1</td> <td>£155</td> </tr> <tr> <td>Course of 4</td> <td>£590</td> </tr> <tr> <td>Course of 6</td> <td>£899</td> </tr> </table>	Course of 1	£155	Course of 4	£590	Course of 6	£899	<p>Thuzzle Skin Resurfacing and Lifting utilises Fractional Radial technology to deliver superficial epidermal micro-ablation and volumetric heating of the dermis to rejuvenate skin texture and heal from within.</p> <p style="text-align: center;">30 mins</p> <table style="margin-left: auto; margin-right: auto;"> <tr> <td>Course of 1</td> <td>£180</td> </tr> <tr> <td>Course of 4</td> <td>£699</td> </tr> <tr> <td>Course of 6</td> <td>£1,020</td> </tr> </table>	Course of 1	£180	Course of 4	£699	Course of 6	£1,020
Course of 1	£130																			
Course of 4	£495																			
Course of 6	£699																			
Course of 1	£155																			
Course of 4	£590																			
Course of 6	£899																			
Course of 1	£180																			
Course of 4	£699																			
Course of 6	£1,020																			

ANTI-WRINKLE INJECTIONS

A quick, simple anti-wrinkle injections targeting wrinkles, giving your skin a healthy, youthful appearance in two weeks or less. It's a simple, fuss-free procedure designed to help you look and feel your best, no matter your age.

60 mins

1 Area	£190
2 Areas	£260
3 Areas	£330
Hyperhidrosis (both arms)	£495



VOLUMISING DERMAL FILLER

Dermal fillers used to fill out facial lines, wrinkles, and creases, increasing both the volume and definition of the lips and cheeks. The aim is to leave you with a more youthful and enhance natural look.

60 mins

Lips – Per syringe	£395
Lips – Additional syringe	£265
Face – Per syringe	£425
Face – Additional syringe	£395
Volumising Fillers	£460
Additional syringe	£410



MICRO NEEDLING

This technique involves using multiple tiny, sterile needles (a Dermapen) to puncture the skin, to promote healing and the growth of new skin to help with the signs of ageing, fine lines, stretch marks, rosacea, hypopigmentation, alopecia and acne scars.

60 mins

Course of 1	£149
Course of 4	£475
Course of 6	£670



PLATELET-RICH PLASMA (PRP) THERAPY

PRP is platelet-rich plasma. It is developed by preparing the patient's own blood in a centrifuge to separate platelets and plasma from the red blood cells. PRP contains stem cells and growth factors, which stimulates the body to heal and generate new cells. This has a variety of uses both in medicine and cosmetics. At Glamour Plastic Surgery and Med Spa, we use PRP to help patients improve their skin, restore hair growth, and improve their intimate health.



PRP FOR THE SKIN

For the skin, we offer two treatment options: a PRP Facelift and Vampire Facial. These treatments both use PRP but have different purposes and are suited to different patients.

60 mins

Course of 1	£290
Course of 2	£559
Course of 3	£749



PRP FOR HAIR RESTORATION

PRP treatment can tackle both male and female pattern baldness and alopecia as it encourages the growth of existing hair follicles, making your hair appear fuller and healthier without resorting to surgery. It is therefore the most natural way to stimulate hair growth.

Course of 3 £1000
4-6-week period



PRP FOR JOINT INJECTIONS

PRP is an orthopaedic treatment suitable for both sports injuries and degenerative conditions. It helps reduce pain and inflammation and improves healing and function. It can be used in all patients and in all age groups.

Course of 3 £1,000