



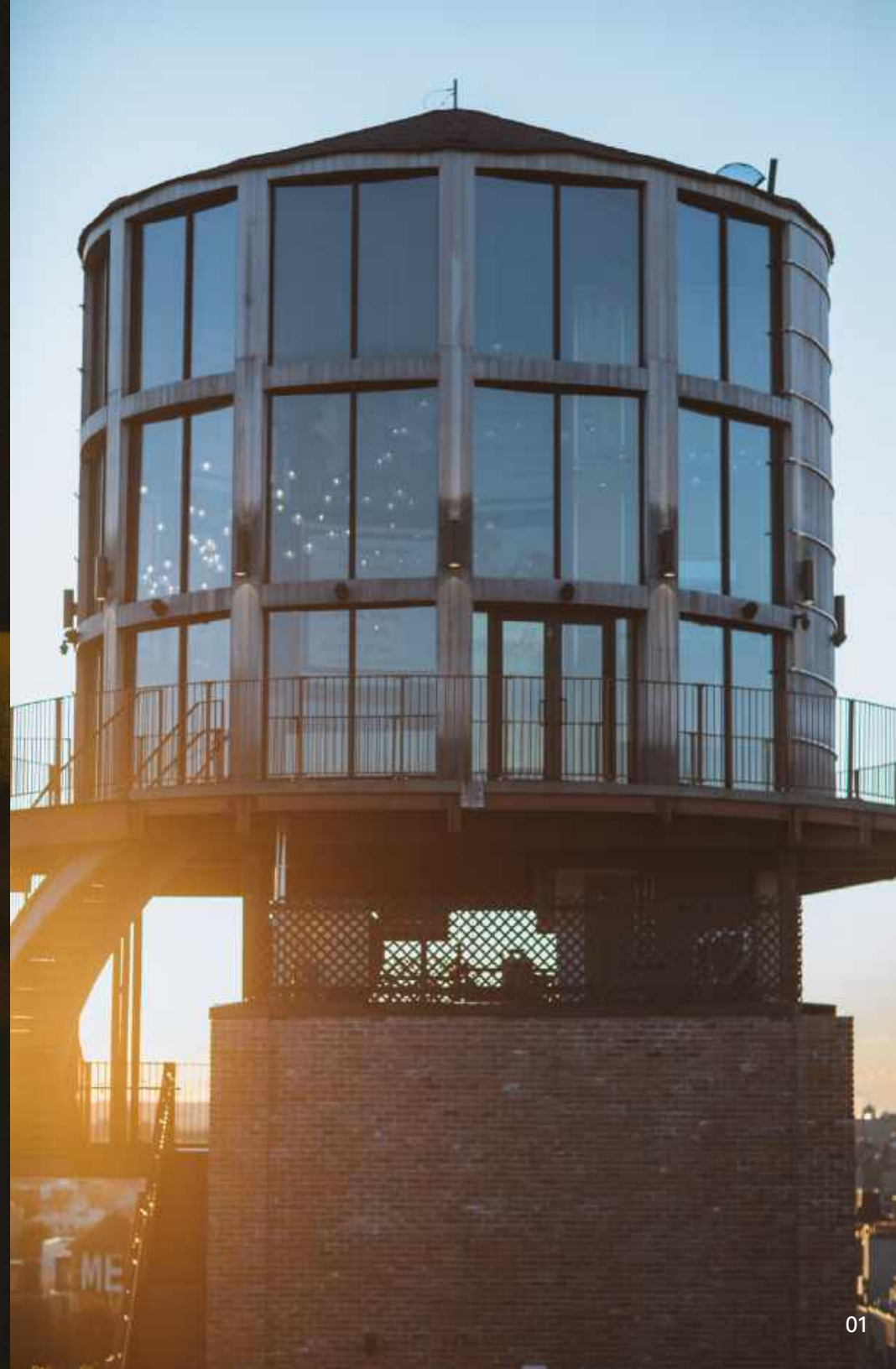
THE
Williamsburg
Hotel

Hotel Story, Sleep with a Local



The Williamsburg Hotel is eight stories and 147 rooms encased in brick, glass, and Corten steel.

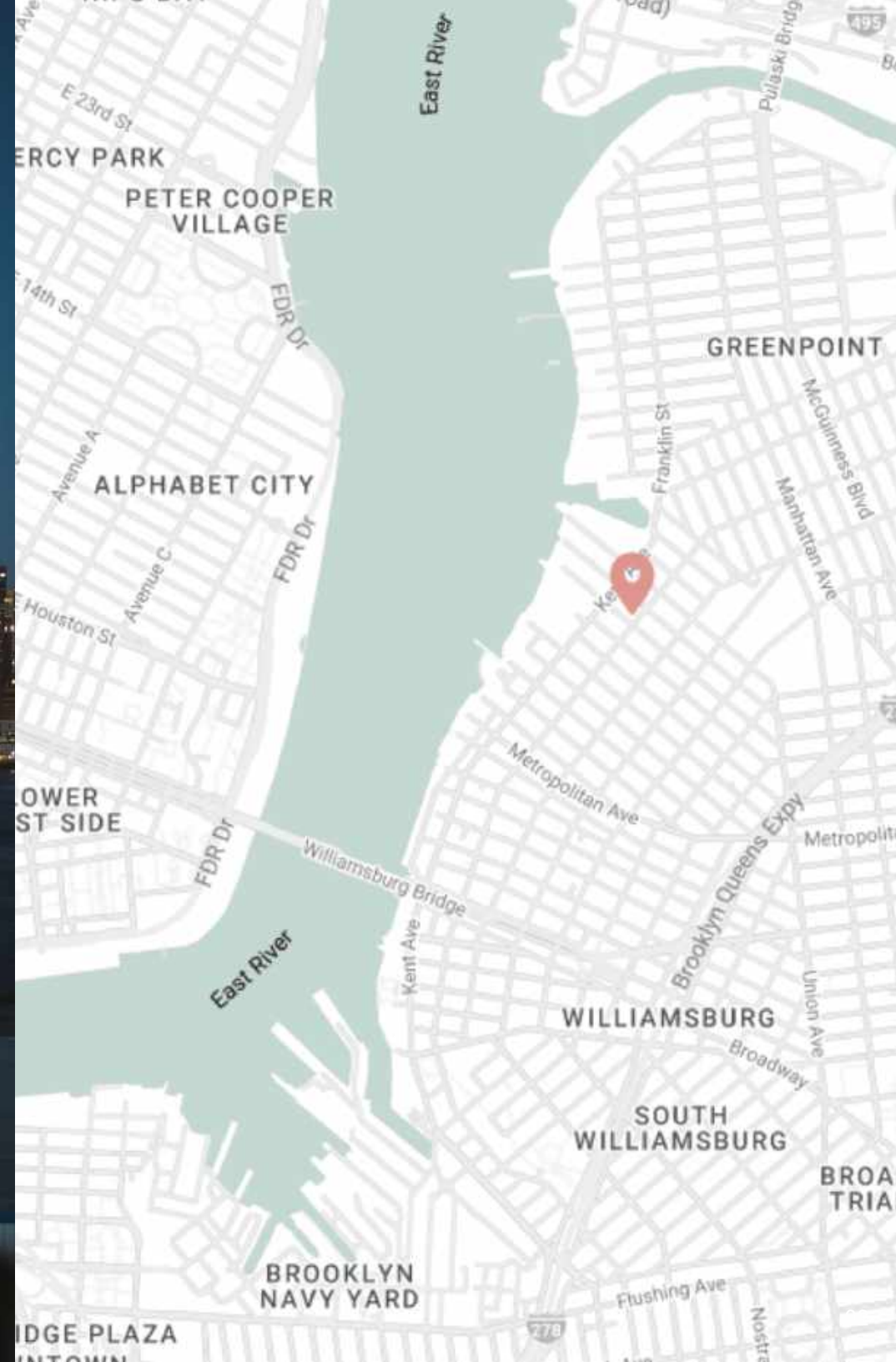
Designed by London-based design firm Michaelis Boyd Studio (Babington House UK, Soho House Berlin), our double-height ceilings, natural finishes and eclectic style invite you to stay awhile.



Located in prime North Brooklyn, with Manhattan just over the bridge, The Williamsburg Hotel is your home sweet hotel at the heart of it all.

The Williamsburg Hotel stands at the nexus of history and history in the making.

L Train | 7 minute walk
G Train | 10 minute walk
JMZ Train | 4 minute walk
East River Ferry | 8 minute walk
John F Kennedy Airport | 30 minute drive
La Guardia Airport | 20 minute drive
Newark Airport | 40 minute drive



We stand for supreme service with a Brooklyn twist.

No nickel-and-diming, plenty of mind reading, and an eagle-eye focus on what matters most:

**Being great hosts
and showing our
guests a great
time.**



Hotel features & In-Room Amenities

147 Guest Rooms including 8 suites

24-hour front desk

Complimentary wi-fi

Complimentary bicycle rental

Complimentary coffee and cookies
from 6AM to 9AM

Work desk and chairs

Outdoor 40' Pool with Roof Deck
(seasonal)

Pet Friendly Hotel with special
amenities (charges apply)

Central air conditioning

Flat screen TV

Laundry Service

Wake-up Calls

Restaurant, Bar & Lounge

Jazz Brunch & High Tea



Wake up on the right side of the river

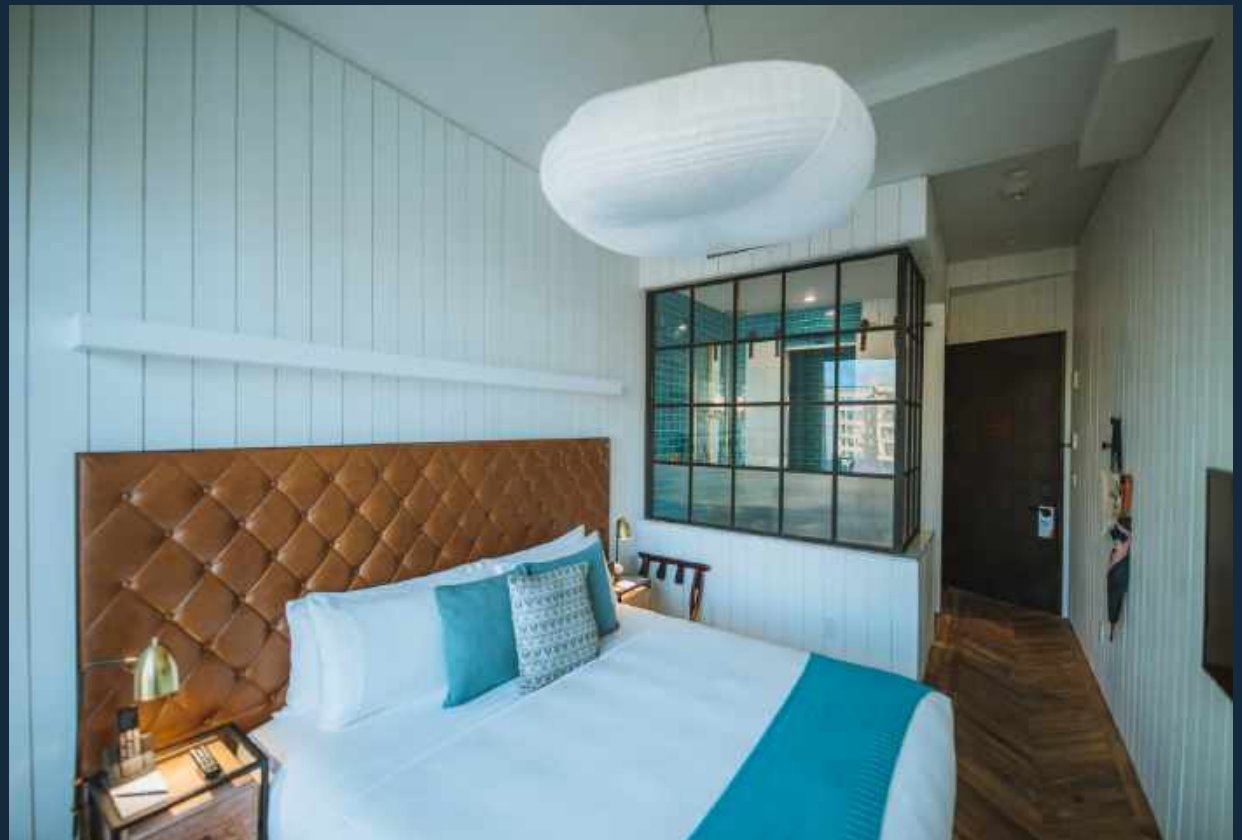
Our stylish (and pet friendly) hotel features each room with floor-to-ceiling windows, custom furnishings designed by Michaelis Boyd Studio. Many rooms offer a private balcony, and bathrooms include classic marble and brass by Waterworks, plus pocket-worthy toiletries by C.O. Bigelow.



Queen Room (220 sq. Ft.)

BROOKLYN VIEWS | SHOWER

Cozy up to the Queen, the perfect room for singles, couples, or close friends. Enjoy chic industrial accents, reclaimed oak floors, and floor-to-ceiling windows with spectacular views of the best borough (that's Brooklyn).



Queen Terrace | Premier Queen Terrace (220 sq. ft.)

BROOKLYN + MANHATTAN VIEWS
SHOWER & TUB OPTION AVAILABLE
UPON REQUEST

Similar to the Queen room, but with more to explore outdoors. The Queen terrace includes a private balcony, custom furnishings and floor-to-ceiling with views of the Manhattan skyline. Connecting rooms are available as well.



Studio King Terrace | Premier King Terrace (250 sq. ft.)

BROOKLYN + MANHATTAN VIEWS
SHOWER & TUB OPTION AVAILABLE
UPON REQUEST

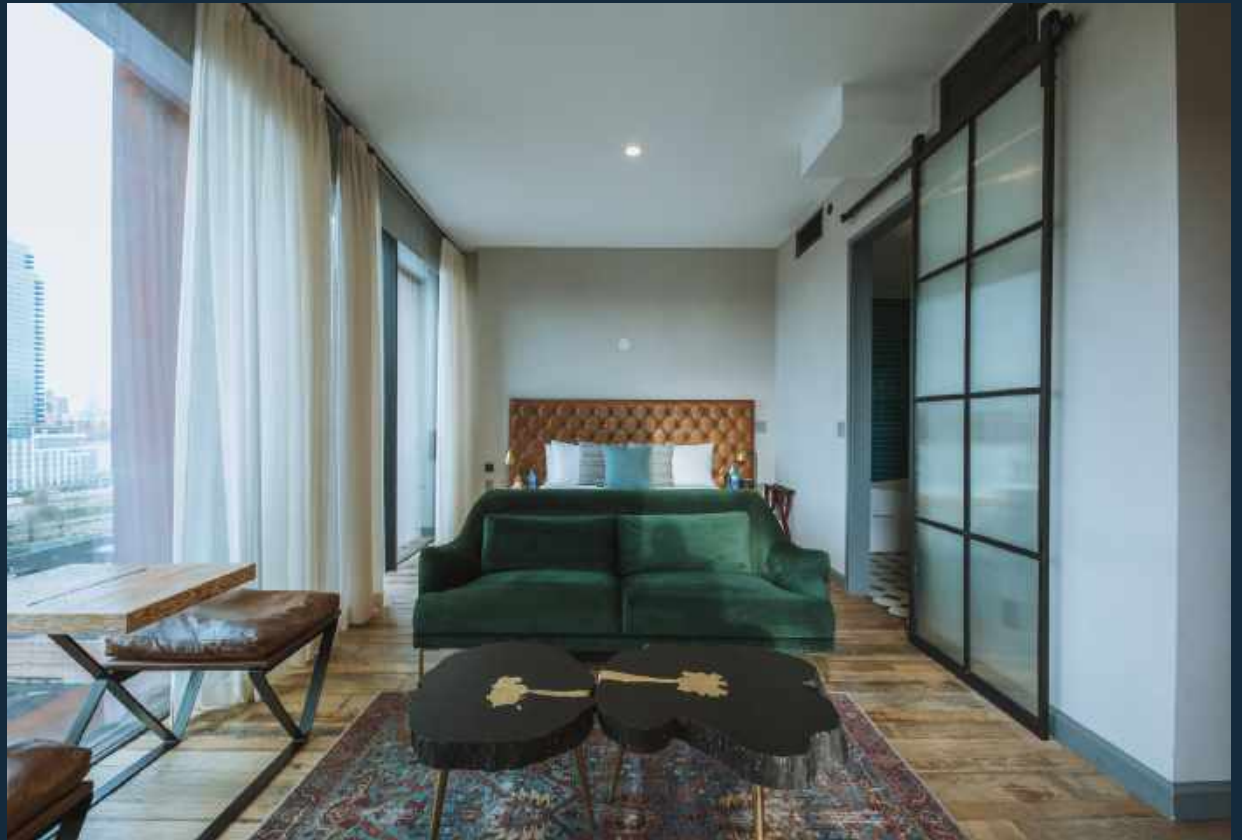
The King terrace includes a private balcony, brass accents, and a king-sized bed for extra sleep space. Floor-to-ceiling windows frame views of the Manhattan skyline. Connecting rooms are available to accommodate larger groups.



Loft Suite | Premier Loft Suite (400 sq. ft.)

BROOKLYN VIEWS | TUB + SHOWER

The Loft Suite is a corner suite offering 180-degree views of Brooklyn from its floor-to-ceiling windows and oversized private balcony. Enjoy a separate seating area, plush king bed, oak wood floors, custom furnishings, and an art deco-inspired bath.



Skyline Suite | Premier Skyline Suite (550 sq. ft.)

MANHATTAN SKYLINE VIEWS | TUB +
DOUBLE SHOWER

The biggest and best views in the house. The suite boasts a king-sized bed, separate seating area, and a private terrace with uninterrupted panoramic views of the Manhattan skyline.



The Williamsburg Hotel Restaurant

50-seat American bistro

American Cuisine

Serves breakfast, lunch and dinner

Brooklyn High Tea Saturday - Sunday



Lobby Bar

Seating for 40 guests

Exquisite rainbow bar

Sophisticated cocktail menu



Patio

Seating for 30 guests

Beautiful landscape surroundings

Open seasonal

Outdoor dining



The Rooftop Pool & Bar

Perched above the city streets, our rooftop oasis boasts breathtaking views, an outdoor pool, bar and restaurant. (seasonal)



The Water Tower Bar

Exclusive 70-person bar offering a truly unique experience with custom menu looking over the entirety of Brooklyn, East River and skyline of Manhattan.



The Ballroom

The Ballroom is our largest and most versatile space. Rich in character and luxury with 30-foot-tall soaring ceilings, chandeliers, sweeping staircases and parquet & marble floors. The Ballroom is a stately event space with shine and swagger.



The Mirror Bar

An emerald gem tucked inside The Williamsburg Hotel, The Mirror Bar features French empire crystal chandeliers hung from 17-ft. ceilings, reclaimed wood floors, luxurious velvet sofas and cool tone finishing. This venue can accommodate up to 70 guests seated and 120 guests standing.

Seating for 70 guests

Standing for 120 guests

Daily live events & Private Hire

100 cocktails





**96 WYTHE AVE.
BROOKLYN, NY, 11249**

718-362-8100

SALES@THEWILLIAMSBURGHOTEL.COM

WWW.THEWILLIAMSBURGHOTEL.COM