
POLO CLUB HOTEL

A RURAL RETREAT
WITH A SPORTING SOUL




POLO CLUB
HOTEL

WWW.POLOCLUBHOTEL.CO.UK

the **HOTEL**



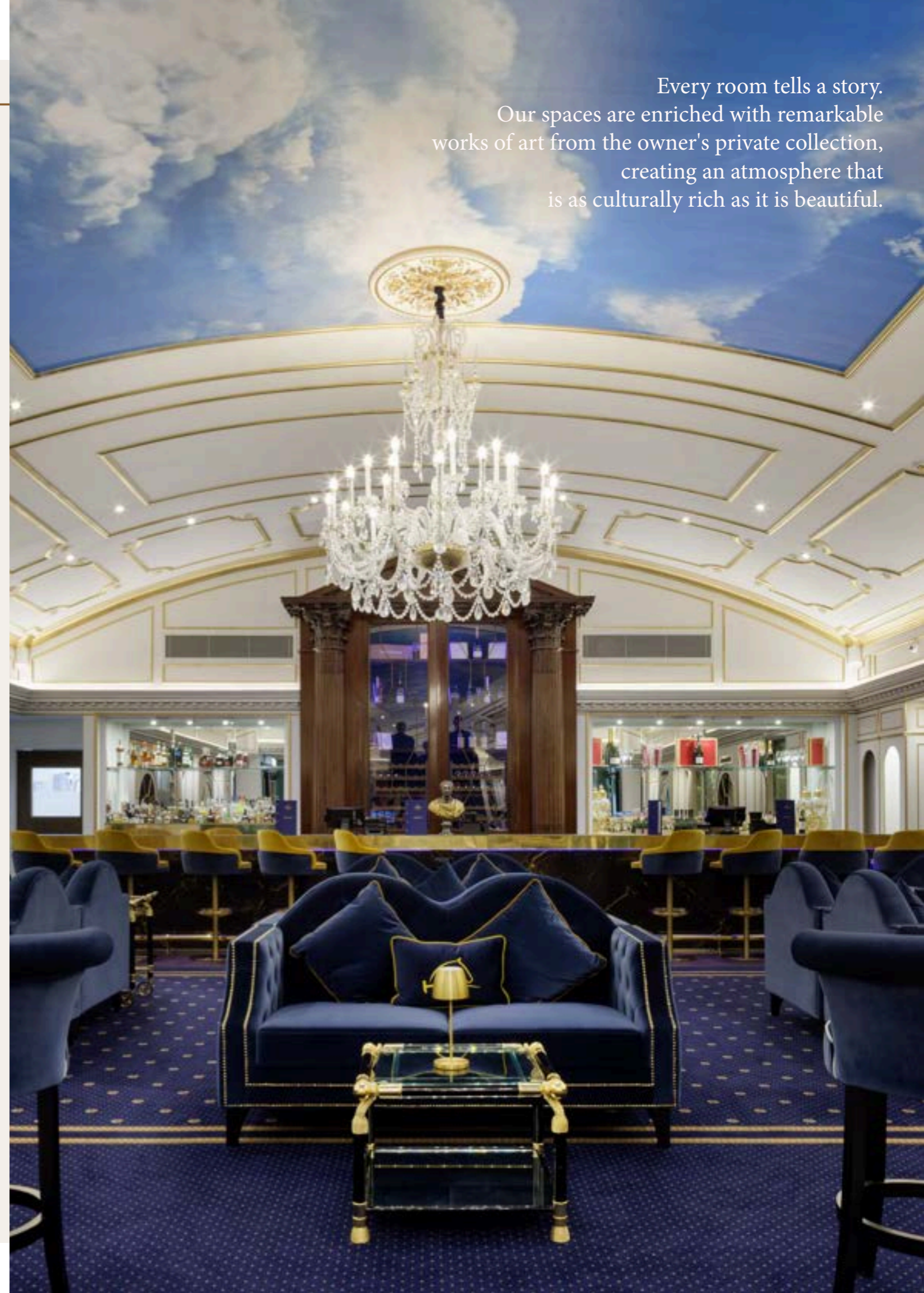
**MODERN
EXQUISITE
ELEGANT**

“
*With plush velvet
seating and
Roman-inspired
interiors, it's a
relaxed start with
a luxurious feel.*”



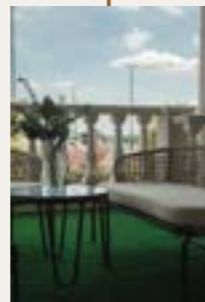
Surrounded by 600-acres of sweeping grounds, Polo Club Hotel offers a truly unique Warwickshire retreat - where the thrill of the sport of the Kings meets effortless luxury. Whether you are here to explore all that the county has to offer or to relax in well-appointed cosy suites, we are here to make your stay extraordinary.

Every room tells a story.
Our spaces are enriched with remarkable
works of art from the owner's private collection,
creating an atmosphere that
is as culturally rich as it is beautiful.





the ROOMS



With 56 rooms across our estate, we have something to suit all. From opulent rooms nestled within the heart of the hotel to our charming Mews accommodation set apart on the grounds, each offer its own distinct character and charm.

SETTLE UNWIND ENJOY LUXURY

Character and charm
Gold detailing
Velvet textures
Elegant styling
Thoughtfully equipped



“
WOW...what a beautiful hotel. Had 2 nights here for a family wedding down the road. Staff were brilliant and attentive. Breakfast was superb and the surroundings just fantastic.”



the **BAR**



**EAT.
DRINK.
SLEEP.
REPEAT.**

“ Fabulous breakfast and well presented ”



From the first light of morning to the last sip of the evening, every moment at our table is crafted to be savoured — all within the heart of the hotel, where Caesar's Lounge beckons with its imperial charm.



Start your day with breakfast worth taking your time over. Choose from a fresh buffet selection or classic hot dishes made to order.



By day, it's the perfect spot for a leisurely coffee or a light refreshment, while by night, Caesar's Lounge transforms into a vibrant cocktail destination, with expert mixologists crafting signature drinks.



Choose from a carefully curated selection of tapas, designed to complement every drink and every mood. From classic Spanish favourites to Polo Club twists, there's something for everyone.

your MEETING



Whether you're planning a small team meeting, a training session or a large corporate event, Polo Club Hotel has the perfect space for you.



EFFORTLESSLY CONNECTED

We cater for all group sizes, offering you and your delegates multiple options in a relaxed countryside setting. Explore our packages, or design a bespoke experience.

THE EMPRESS SUITE

- 👤 Up to 8 delegates
- 📍 Polo Club Hotel

With sumptuous furnishings & wraparound balcony offering an exceptional and unique setting.

CHUKKA LOUNGE

- 👤 Up to 21 delegates
- 📍 Polo Club Hotel

An equestrian-themed event and meeting space offering an alternative to traditional corporate boardrooms.

THE TERRACE

- 👤 Up to 35 delegates
- 📍 Polo Club Hotel

Seated: Up to 12
Bathed with natural light, ideal for networking events and small meetings.



Looking for a bigger venue? Our close proximity to the Millstone Hare and Warwickshire's top event destination, the IXL Events Centre, enables us to offer a personalised service for you and your guests.

- 👤 Up to 800 delegates

- 📍 5-min walk



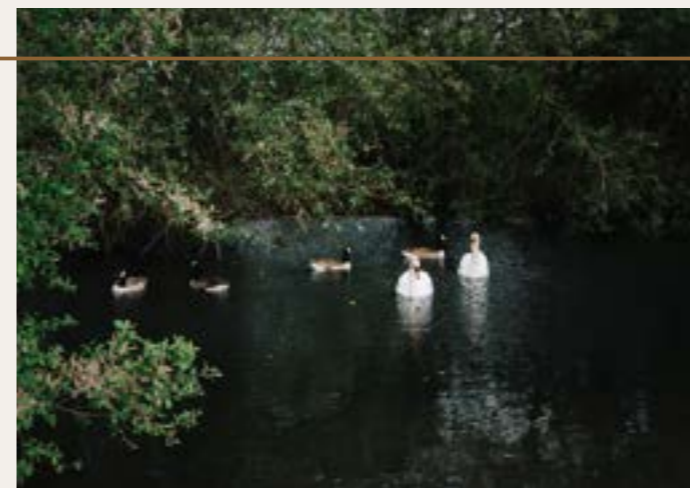
the **ESTATE**



GREENERY AS FAR AS THE EYE CAN SEE



Nestled within the verdant estate, Polo Club Hotel enjoys direct access to public footpaths. Surrounded by sweeping grounds, wildlife, horses and fields, the estate offers a peaceful retreat for anyone drawn to the great outdoors. Enjoy the fresh air!



“
The hotel guests who never check out, waddling in a perfect little line like they own the place...
Yes, okay, they do!”



the AMENITIES



Books from the 'Take a book, leave a book' shelf are free for guests to borrow, read, and pass on. It's a simple idea, but one we think makes a stay a little more enjoyable — and gives good books a second life.



Polo Club Hotel is part of the Dallas Burston Polo Club estate, giving guests exclusive access to its thrilling polo matches, elegant events, and stunning countryside setting — the perfect complement to a luxurious stay.



Elevate your wellness routine in our fully equipped fitness centre, open 24 hours a day for your convenience. Enjoy complimentary towels, refreshing water stations, and premium experience, no matter where you are in your fitness journey.



Polo Club Hotel is ideally situated for scenic walks, with numerous trails and green spaces within easy reach.



going the extra
MILE



DOGS VERY WELCOME

Travelling with your four-legged friend? we are proud to be a dog-friendly hotel, From dog beds and treats to acres of countryside to roam, we've thought of everything.



SPECIAL OCCASIONS

Celebrating something special? Leave it to us. From balloons, champagne and decorative touches, we can make your stay extra memorable. Simply let us know in advance.



We've partnered with Sir Woofchester's whose goal is to help dogs (and their pet-parents) to live their best life! As you'd expect, Sir Woofchester's works hard when it comes to palatability, quality, and ethical & environmental standards.



hire for
FILMING



**WE ARE
FILM
FRIENDLY**

- ✓ X parking spaces
- ✓ Exclusive-use availability
- ✓ Grab & go breakfast
- ✓ Flexible cancellation terms
- ✓ Space for catering trucks & RVs



With its gallery-worthy fine art, sweeping architecture, and an atmosphere of effortless sophistication, Polo Club Hotel is the ideal location for your production. The luxury feels lived-in, the beauty feels real, and the camera will love every inch of it.

To discuss your project, or request production rates, please contact our events team who will be delighted to support your filming enquiry.

M: 01926967600
E: enquiries@poloclubhotel.co.uk



RESOURCES

BBC Birmingham & Midlands production:

A main regional production hub in the heart of England, creating and broadcasting local news as well as factual and drama productions

Midlands film office network:

Connecting productions with experienced regional crew, suppliers and specialist services across

Accessibility:

- 20 minutes from Leamington Spa train station

- 40 minutes from Birmingham Airport, with extensive UK and international connections

- 90 minutes by train from London via Leamington Spa.

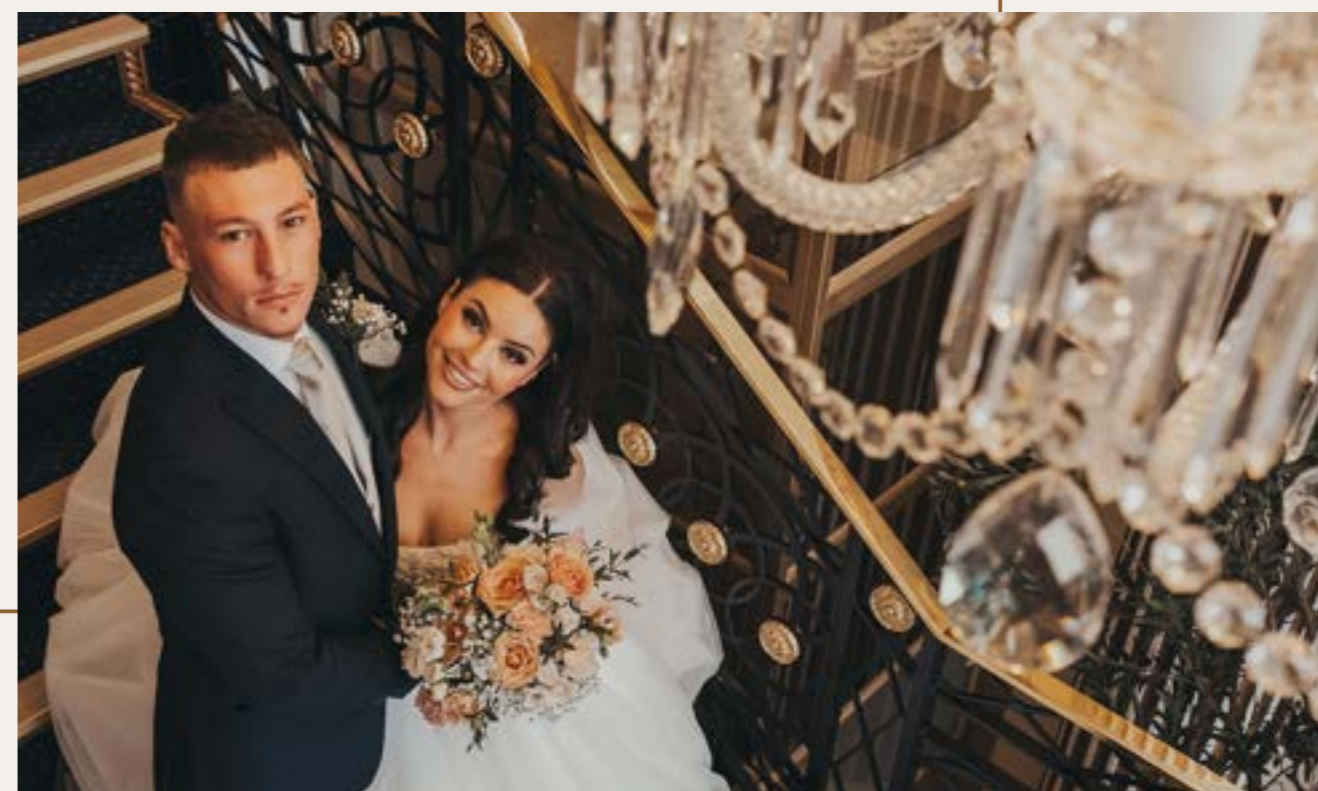
- Easily accessible by road via the M40, M1 and M42



your WEDDING



STUNNING & UNFORGETTABLE



Imagine saying "I do" surrounded by the timeless elegance of Polo club hotel, where rolling grounds and refined sophistication set the scene for the wedding day you've always dreamed of. Our fully licensed venues offer a breathtaking backdrop for every magical moment.



CLOUD PAVILLION - Dallas Burston
305 persons maximum

SILCHAR RESTAURANT - Dallas Burston
133 persons maximum

EMPRESS SUITE - Polo Club Hotel
48 persons maximum

SNAFFLES BAR - Dallas Burston
35 persons maximum

CHUKKA LOUNGE - Polo Club Hotel
34 persons maximum






POLO CLUB
HOTEL

Stoneythorpe Estate, Southam, Warwickshire, CV47 2DL
01926967600
enquiries@poloclubhotel.co.uk

Help us spread
the word about Polo Club Hotel
Leave us a review

