

MAY 12, 2022

Grand Park City Hall: The Official Hotel Partner for Singapore International Festival of Arts (SIFA) 2022

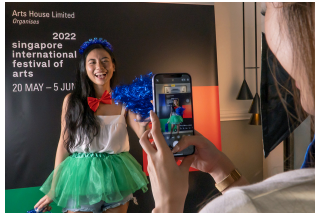
The exclusive partnership creates an immersive experience featuring SIFA on Demand, a festival-themed Insta-Grand Studio and exclusive savings on room and dining offers for Grand Park City Hall's hotel guests and SIFA 2022 ticket holders.



SINGAPORE – As an ardent supporter of the local arts and heritage, Grand Park City Hall is pleased to be the host to Singapore International Festival of Arts (SIFA) 2022 as the Official Hotel Partner for the event. This exclusive partnership brings about a myriad of exciting offers and privileges for both Grand Park City Hall's hotel guests as well as SIFA 2022 ticket holders to elevate the festival's experience.

Catch SIFA on Demand directly in Grand Park City Hall's rooms and suites

From 20 May to 10 July 2022, guests staying at Grand Park City Hall can get direct complimentary access to **Delicate Spells of the Mind** (20 May to 10 July), **MEPAAN, Ceremonial Enactments and Bangswan Gemala Malam** (20 June to 10 July) throughout their stay as an exclusive privilege. SIFA on Demand Tickets can otherwise be purchased on sifa.sg at S\$15 per show or S\$25 for bundle of 4*



RGB Insta-Grand Studio at Grand Park City Hall

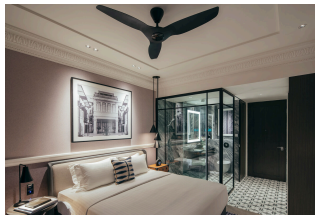
Grand Park City Hall's self-photo taking studio is given a festival makeover and is dressed up in Red, Green and Blue (RGB), aligned with the Festival's colours. SIFA ticket holders or hotel guests who purchased tickets to SIFA 2022 will enjoy complimentary 60 minutes of usage of the Insta-Grand Studio to have some selfie-fun, with flattering studio lights, and SIFA-themed props including sunglasses, necklaces, scarves, pom-poms and tutus to complete the picture-perfect festival outfit.



RGB Cocktails at Tablescape Bar

Head over to the hotel's signature restaurant & bar, Tablescape for some pre- or post-festival cocktails. The Red Lantern, Moon Fizz and Blue Sky Citrus were created with the colours of SIFA 2022 in mind and boast dynamic profiles on the palate with floral and fruity twists, with each only more exciting than the next.

Available for a limited time only from 20 May to 10 July 2022, priced at S\$20+ each. Guests staying at Grand Park City Hall or SIFA Ticket Holders will enjoy 10% savings off any RGB Cocktail.



SIFA 2022 Ticket Holders Enjoy a One-night Stay from S\$208++

Conveniently located within walking distance to various SIFA 2022 performing venues such as Esplanade Theatre, The Arts House and Victoria Theatre, Grand Park City Hall is the ideal pitstop to stay and recharge in between the festivities. SIFA 2022 ticket holders can treat themselves to a one-night stay with breakfast for two in a Deluxe Room from S\$208++* or a Premier Room at S\$258++*

*Terms and conditions apply

10% off SIFA 2022 Festival Tickets for Grand Park City Hall Guests

The exclusive hotel partnership allows guests staying with Grand Park City Hall to enjoy 10% savings for all SIFA 2022 shows.

For further information and reservations, visit:

<https://www.parkhotelgroup.com/singapore/grand-park-city-hall/sifa>

Availability: 20 May to 10 July 2022

Price: Complimentary 60-minute usage for SIFA 2022 Ticket Holders

How to book:

- Email corporate@parkhotelgroup.com with your SIFA 2022 ticket number and preferred date and time
- Festival tickets must be presented upon check-in
- Subject to availability on a first-come-first-serve basis

SIFA 2022 OFFER: 10% OFF RGB COCKTAILS*

Offer Validity: 20 May to 10 July 2022

New Cocktail Menu: RGB Cocktails

Price: S\$20+ per cocktail

Availability: 5pm to 10pm daily

Menu:

- Red Lantern: Rum, Strawberry Mojin and Cranberry Juice
- Moon Fizz: Moon Liqueur, Gin and Fresh Lemon Juice
- Blue Sky Citrus: Vodka, Bols Blue Curacao, Yuzu Juice, Pineapple Juice

*Discount is only applicable to in-house guests and SIFA 2022 ticket holders. To enjoy the discount, hotel guests must present their key card while SIFA ticket holders must present their tickets.

One-night stay in a Deluxe Room from S\$208++* per night or Premier Room from S\$258++* per night

Inclusions:

- Breakfast for two persons at Tablescape Restaurant
- SIFA on Demand
- Complimentary Wi-Fi
- 10% savings off RGB Cocktails

Book period: Now to 10 July 2022

Stay Period: 20 May to 10 July 2022

How to book: <https://www.parkhotelgroup.com/singapore/grand-park-city-hall/sifa2022>

*To enjoy these exclusive rates, SIFA 2022 festival tickets must be presented upon check-in.

Appendix

RGB Insta-Grand Studio

Tablescape Restaurant & Bar

Stay at Grand Park City Hall

SIFA On Demand

Guests staying at Grand Park City Hall from 20 May to 10 July can enjoy complimentary direct access to these four shows in their guest rooms:

- **Delicate Spells of Mind by Lucy McRae (20 May to 10 July)**, a performance film that dissects the operating system of the mind where a Seeker contends with ego, the inherited artificial intelligence.
- **MEPAAN (20 June to 10 July)**, an ethereal sonic and visual nature centred opus by Singapore Chinese Orchestra and Malaysia based creative agency, The Toyang Initiative.
- **Ceremonial Enactments (20 June to 10 July)** by MAX TAN, Nadi Singapura and Bhasikar's Arts Academy which puts together three re-enactments of culturally specific customs and rites from birth, to wedding
- **Bangswan Gemala Malam (20 June to 10 July)** by Teater Ekambara, a Malay adaptation of the Shakespearean classic, A Midsummer Night's Dream.

SIFA on Demand Tickets can otherwise be purchased on sifa.sg at S\$15 per show or S\$25 for bundle of 4.

10% off SIFA 2022 Festival Tickets for Grand Park City Hall Guests

The exclusive hotel partnership allows guests staying with Grand Park City Hall to enjoy 10% savings for all SIFA 2022 shows.

For more info and to book tickets: www.sifa.sg

SIFA 2022 Schedule

Ceremonial Enactments

By MAX TAN, Nadi Singapura and Bhasikar's Academy (Singapore)

Date: 21 May – 22 May, Saturday – Sunday

Time: 8pm

Duration: Approx 2h, no intermission

Venue: Esplanade Theatre

Tickets: S\$8 (Cat 1), S\$48 (Cat 2), S\$8* (Cat 3)

*Limited concessions available for students, NSFs and seniors. Also available on SIFA On Demand: S\$15

In Ceremonial Enactments, three Singaporean companies imagine a resplendent tapestry of local customary rituals, told with a contemporary twist.

Drawing from customs and rites within Singapore's diverse culture, Ceremonial Enactments features three festival commissions, woven into one seamless performance experience.

Held at the Esplanade Theatre, *Ceremonial Enactments* flips conventional notions of staging and the audience-to-performance relationship within a traditional proscenium theatre.

In Act I, designer powerhouse and label MAX TAN opens the evening with *AMC*, a fashion performance inspired by Chinese and Southeast Asian birth rituals. Conceived as a sartorial love letter to designer Max Tan's mother, Tan constructs and weaves garments of ethereal beauty layered with ideas of birth, re-birth and Sambara.

In Act II, percussion ensemble Nadi Singapura, led by Artistic Director Riduan Zalani, presents one of the grandest ceremonies within the Malay community – the wedding or the majlis perandingan. *293NW* elegantly weaves dance and narrative, along with Nadi Singapura's signature style of traditional Malay percussion rhythms.

In Act III, Cultural Medallion recipient Mrs Saritha Bhaskar presents *Yantra Mantra*, an enactment of an ancient dance ritual performed in Hindu temples. Drawing from compositions by the Indian classical composer Sri Muthuswamy Dhikshitar and poetry by the 18th century Tanjore Quairat, dancers pay obeisance to the nine celestial custodians that guard the eight directions and the centre of the earth.

Ceremonial Enactments features a stellar team of creatives, including Randy Chan of Zarch Collaboratives Architectural Studios conceiving the startling set design, Brian Gohing Tan, Andy Lim and Philip Tan designing multimedia, light and music respectively, Gino Babagay lending choreographic unity along with fashion designer Max Tan conceiving costumes for the entire work.

Grand and gorgeously realised, *Ceremonial Enactments* is a sensorial awakening celebrating customary rituals in a highly contemporary performance.



Holly Hemdon: PROTO

By Holly Hemdon (United States)

Date: 20 – 21 May, Friday – Saturday
Time: 8pm
Duration: 1h, no intermission
Venue: Victoria Theatre
Tickets: \$38*, \$48

*Limited concessions available for students, NPSs and seniors

One of the most intelligent, disruptive musical voices of our age, experimental musician Holly Hemdon dazzles in her first concert in Asia at SIFA 2022.

Billed as “shaping the future of A.I.” by CNN, Holly Hemdon navigates the nexus of technological evolution and musical catharsis through elevated live performances with her vocal ensemble.

Operating at the edge of electronic and avant-garde pop music, her work involves augmentation of her voice and image, facilitated by critical research in Artificial Intelligence and decentralised infrastructure.

On her most recent full-length album, *PROTO* (released in 2019 via 4AD), Hemdon fronts and conducts an electronic pop choir, comprised of both human and A.I. voices, over a musical palette that encompasses everything from synth to Sacred Harp stylings.

PROTO is a thrilling engagement with one of today's greatest cultural shifts – the “protocol era” – where rapidly surfacing ideological battles over the future of A.I. protocols, centralised and decentralised internet protocols, and personal and political protocols are emerging.

The sounds synthesised on stage by Hemdon, her A.I. “baby” *Spawm*, and the ensemble combine elements from Hemdon's dynamic and idiosyncratic personal journey: the timeless folk traditions of her childhood experiences in church-going East Tennessee (particularly the prismatic bygone practice of Sacred Harp singing); the avant-garde music she explored while at Mills College; and the radical club culture of Berlin, all enhanced by her recent PhD composition studies researching machine learning and music.

Euphoric, dynamic and eye-opening, *Holly Hemdon: PROTO* promises to be an exhilarating concert from a musician at the forefront of today's technological revolutions.

The Neon Hieroglyph

By Tai Shani

Take a trip into the unconventional mind of Turner Prize award-winning artist, Tai Shani, in this exciting new iteration of her film *The Neon Hieroglyph*, created for SIFA 2022.

With her singular ability to build worlds of arresting and mythic beauty, British artist and the 2019 Turner Prize award winner Tai Shani draws inspiration from forgotten sources, fictional stories and collective fantasies.

The Neon Hieroglyph is a filmic performance that takes audiences into a hallucinatory universe, where Shani unleashes her artistic imagination to an unlikely subject: a speculative history of ergot, a fungus that grows on common grains, linked to mass hallucinations in Europe.

Shani weaves a series of psychedelic vignettes around ergot that encompass a historical narrative between myth and reality, including references to a continuous 450-year outbreak of ergot poisoning in Alsace, one of seven islands that make up Italy's Aeolian Islands.

With scenes set in “impossible places”, *The Neon Hieroglyph* seizes from the cellular to the planetary, from ice cream sundaes to Palaeolithic caves, dancing plaques to communist witches, as Shani weaves her subtle commentaries on altered states, community and speculative futures.

In the register of the fantastical, immaterial and mystical, Shani casts well-known Malaysian actress A. Kukathas in the role of narrator for this new exciting iteration of *The Neon Hieroglyph*, created for SIFA 2022.

Astonishing, iconoclastic and full of surprise, *The Neon Hieroglyph* is a spectacular filmic performance not to be missed.

Devil's Cherry

By Kaylene Tan and Paul Rae

Two lost Singapore souls cross the Devil's path in Australia. As they reckon with personal demons and the ghosts of the landscape, will they be an easy catch, or has the Devil met his match?

Set where urban life meets the Australian Bush, *Devil's Cherry* is a fantastical tale of ordinary desire, the escape it promises, and the dreams it dangles.

Dobbin and Mo are a couple in search of themselves and on the run from each other. Lured by the Singapore dream of Australia's wide open spaces, they've been on the road for months now. When these lost souls stumble across the Devil's path, they seem like an easy catch. But maybe this time he has met his match, and it's the Devil's cherry that's ripe for the picking.

In *Devil's Cherry*, SIFA is proud to announce the return of Kaylene Tan and Paul Rae, formerly of cult Singapore performance company spell87. Bringing their trademark everyday poetry and bare bones theatricality to the atmospheric environment of Pasir Panjang Power Station, they will stage a hallucinatory collision of beauty, banality and terror.

Featuring some of Singapore's most charismatic actors – Lim Kay Shi, Neo Swee Lin, and enigmatic new-generation actor Elizabeth Sengupta Tan – and mobility-trained Indian-Australian queer dancer Riana Peterson, the experience blends striking visuals by Andy Lim and Wong Chee Wai with immersive spatial audio by Darius Kedros and the gothic Outback blues of faded Australian songsmith, C.W. Sionking.

As personal demons collide with the ghosts of the landscape, *Devil's Cherry* is an intimate epic about our careworn past, uneasy present, and necessary future.



The Once and Future

By Yeo Siew Hui

A unique collaboration between one of Singapore's leading filmmakers and one of the world's greatest orchestras, this expanded cinema experience, set in the not-so-distant future, contemplates the human journey as humanity looks towards planetary exodus to escape extinction.

In the near future, planet Earth has become unsustainable for human survival as we look towards planetary exodus to escape extinction. Unable to withstand the voyage, we had to leave our bodies behind and upload the totality of human experience into a singularity we call The Labyrinth. Finally, now the human race is one. But have we lost our humanity in the making, when all is left are memories with no one to remember?

The Once and Future is an expanded cinema experience by lauded Singaporean filmmaker Yeo Siew Hui. Winner of the Golden Leopard grand prize at the 71st Locarno Film Festival for his film *A Land Imagined*, Yeo directs this illuminating and affecting work that speaks to the impending fears of our age.

His cinematic vision comes together with the virtuosic composition by Eugene Birman, and performed live by musicians from the world-renowned Berliner Philharmoniker, forming the *Zam/* Ensemble Berlin. Charismatic female vocalist Anandi Bhattacharya gives voice to *The Once and Future* as the Artificial Intelligence who guides the audience through its philosophical journey between laser light sculptures that bring to life the film on screen.

Deeply human and gazing at lives in an allied world, *The Once and Future* is a daring and exquisite work about the borders of land, body and love, to discover what separates and binds us, and ultimately, what makes us truly human.

SALOME

By Ong King Sin

From internationally acclaimed Singapore director Ong King Sin, comes an arresting evocation of the enigmatic character Salome from Oscar Wilde's renowned play. Ong joins the ranks of towering artists throughout history who have re-imagined famous classics to make ground-breaking art. In project *SALOME*, Ong unravels the rituals of projecting – via social media and creative documentary film-making – to finally recast the idiom “heads will roll”.

“How do we express ourselves, and remain free, during the challenging restrictions of the pandemic? As our bodies are locked down, can we find the imaginative freedom to roam the wildest fantasies in our apartment? This was the beginning of the project to transform my apartment in Berlin into the world of *SALOME*. Two, juxtapose that with a live performer in Singapore. These, harness social media as the site of performance which have long superseded our theatre buildings. It's necessary to assert performance with the limited resources available, as we become debilitated by regulations and our dreams continue to be under threat. The rest as they say is history. We know we are now in a new world of reimposed barriers, in a precarious future where we are struggling to regain our imagination of the possible.” Ong King Sin

Salome is a larger-than-life character who has from time immemorial horrified and fascinated all. Who is *SALOME* in our contemporary times, who attempts to transform their position of no-power into some kind of power?

Based on English playwright Oscar Wilde's symbolist play from 1891, *SALOME* fights to be free from the systems of morality and patriarchal power which have imprisoned them. Salome staked both controversy and acclaim when it was first performed – and today, Ong's *SALOME* strikes a provocative and ferocious double portrait of individuals unafraid to pursue their deepest instincts to become emancipated.

Ong collaborates with Berlin-based performance artist Michaela J. Douda, to navigate the edges of documentary film, and Singaporean actor Janice Koh, to occupy social media with a low at all costs. Set in an unexpected installation by Heman Chong with the engaging rhythms of composer Kaffa Matthews, they jointly contemplate the *SALOME* complex from diverse directions.

In an intriguing pre-performance on social media, the *SALOME* complex is performed, even before the audience enters the theatre. Koh embodies her contemporary Salome on Instagram @thehalomecomplex from now till 26 May 2022.

Meanwhile, Douda performs their mesmerizing autobiography on film from Berlin, recounting their perilous journey into the European Union fortress and the shedding of different selves in order to survive en route to freedom.

A meditation on the rituals of projecting, transitioning, becoming and self-mythologising, project *SALOME* is a startling performance from one of Asia's most accomplished directors.

About Singapore International Festival of Arts (SIFA)

As Singapore's annual pinnacle performing arts festival, the Singapore International Festival of Arts (SIFA) presents captivating and diverse works across theatre, music, dance, film and visual arts. First launched as the Singapore Festival of Arts in 1977, the festival has gone through several evolutions and inspired generations of arts lovers and practitioners. Today, the highly anticipated festival is a high point on Singapore's arts and cultural calendar. SIFA continues its festival mission to champion the creation and presentation of Singaporean and international works.

About Grand Park City Hall

Grand Park City Hall is the flagship luxury hotel of Park Hotel Group, occupying a prime location in Singapore's civic and central business districts. Part of Grand Park City Hall is City Hall Square, a three-storey mixed lifestyle development with a dining, beauty, and fashion boutique created by integrating two century-old conservation shophouses within its modern structure, which comprises 343 guestrooms across 10 floors – a design that perfectly embodies Singapore's unique culture.

By building new upon the old, history and heritage and the hotel fabric become inseparable. Visual touches acknowledge this connection: take the neo-classical aesthetic of the restaurant – a tribute to the Neoclassical and Palladian architecture to nearby landmarks such as the National Gallery, Nanankian Museum, and Supreme Court.

More information is available on its website, Facebook and Instagram.

Next article
A Special Mother's Day Treat at Tablescope >

Press Contact

Dia Maeda
dia.maeda@parkhotelgroup.com
+65 6432 5517