

BREAKFAST MEETINGS



BREAKFAST PACKAGES

BUSINESS BREAKFAST- \$50 PER PERSON**Private Meeting Space:**

- Venue hire included with minimum spend, maximum four hour booking*
- Ceiling-mounted data projector and screen
- Wi-Fi access for all attendees
- Notepads, pens, water and mints

Catering Inclusions:

- Freshly brewed coffee and a selection of Dilmah teas
- Orange juice and apple juice
- Continental Breakfast Menu

PREMIUM BREAKFAST- \$55 PER PERSON**Private Meeting Space:**

- Venue hire included with minimum spend, maximum four hour booking*
- Ceiling-mounted data projector and screen
- Wi-Fi access for all attendees
- Notepads, pens, water and mints

Catering Inclusions:

- Freshly brewed coffee and a selection of Dilmah teas
- Orange juice and apple juice
- Sliced seasonal fruits and selection of Danish pastries
- Premium Plated Breakfast Menu

Continental Breakfast Menu

- Sliced seasonal fruits
- Granola with coconut yoghurt, maple syrup, berries
- House made bircher muesli
- Selection of freshly baked croissant and Danish pastries, jam and butter
- Selection of Australian cheese and cured meats

Premium Plated Breakfast Menu

SELECT ONE of the following to be served to each guest:

- Smashed Avo on sourdough, scrambled egg, field mushroom, crumbled feta cheese
- Croissant Benny, cheesy scrambled egg, Virginia ham, wilted spinach, hollandaise
- Vegetarian Brekkie, wilted spinach, mushroom, baked bean, roasted tomatoes, scrambled egg, toasted sourdough, sweet potatoes rosti
- Australian Brekkie - chicken sausage, smoked bacon, scrambled egg, mushrooms, tomato, sourdough
- Mushroom & Sweet Potato Rosti Benny, bacon, homemade caponata, scrambled egg, sriracha hollandaise

Catering upgrades also available!

*Event must conclude no later than 11am. Minimum 20 guests required; standard event T&Cs apply.
Menus are subject to seasonal change.

CONTACT US TODAY:

casey.mikus@accor.com



VENUE OPTIONS



RIVERSIDE BALLROOM

- Hotel's premium event space
- Pillarless room, 476sqm
- 4.5m ceiling height
- Ability to divide into Ballroom SOUTH + Ballroom NORTH



SILVER ROOM

- Features generous amount of natural light
- Pillarless room, 182sqm
- 4.5m ceiling height



THE BOARDROOM

- Features natural light
- Dedicated catering area at rear of room
- Located directly opposite the main Ballroom



THE LANGLEY ROOM

- Easy access direct from the hotel lobby
- Ground floor location
- Self-contained bathroom facilities

MEETING ROOM CAPACITIES

Room	Height (m)	Area (m2)	Theatre	Cabaret	Classroom	U-Shape	Boardroom	Cocktail	Banquet
Riverside Ballroom	4.5	476	500	264	250	51	40	600	300
Ballroom South	4.5	260	300	128	150	51	40	300	140
Ballroom North	4.5	180	180	96	72	42	30	200	90
Silver Room	4.5	182	180	112	72	42	30	200	120
Boardroom	2.7	95	50	32	30	24	20	60	50
Langley Room	3	96	60	40	30	24	20	60	-

ACCOMMODATION

Discounted room rates available for your guests

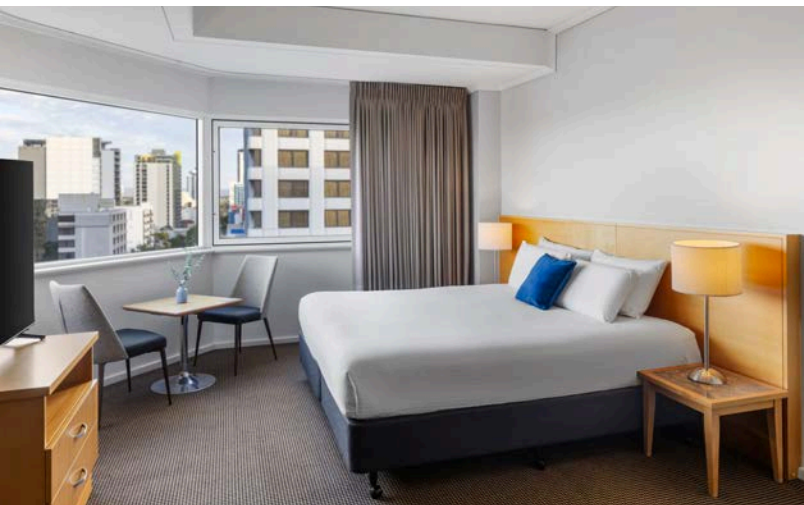
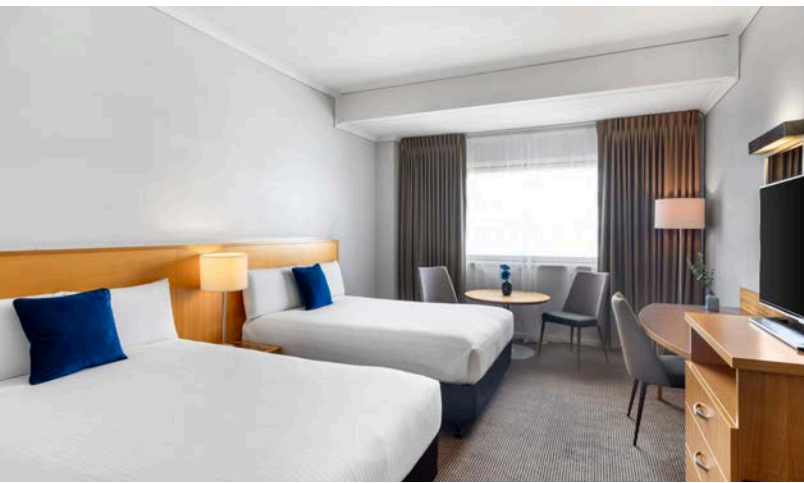
Experience 4.5-star centrally located accommodation at Novotel Perth Langley with 256 beautifully appointed guests rooms and suites, featuring the Swan River and city views.

HOTEL FACILITIES

- Sen5es Restaurant & Wine Bar
- Fenians Irish Pub
- 24 hour room service
- Daily buffet breakfast
- Onsite secure parking
- Top-floor gymnasium & relaxation area
- Business centre
- Children's play area
- Self-serve laundry
- Laundry and dry-cleaning service
- Complimentary Wi-Fi & access to PressReader

ROOM TYPES

- 137 Classic rooms - available in queen & king
- 72 Classic twin rooms
- 19 Superior king rooms
- 28 Suites, available in three room types



GET REWARDED WITH LOYALTY POINTS WHEN YOU ORGANISE YOUR EVENTS WITH US

**JOIN ACCOR'S ALL
MEMBERSHIP PROGRAM**



CONTACT US TODAY

casey.mikus@accor.com

+61 8 9425 1630

221 Adelaide Tce, Perth, WA 6000

novotelperthlangley.com.au

