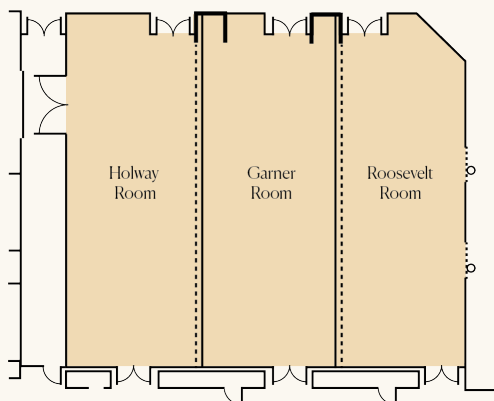


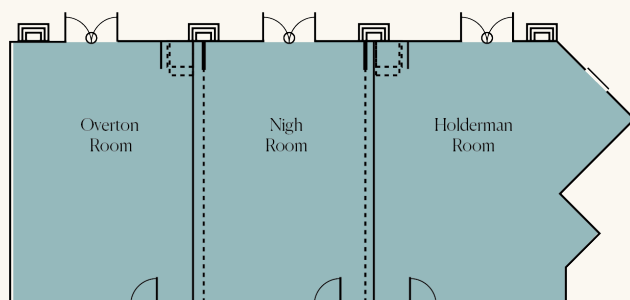
Event Function Space

General dimensions and capacity



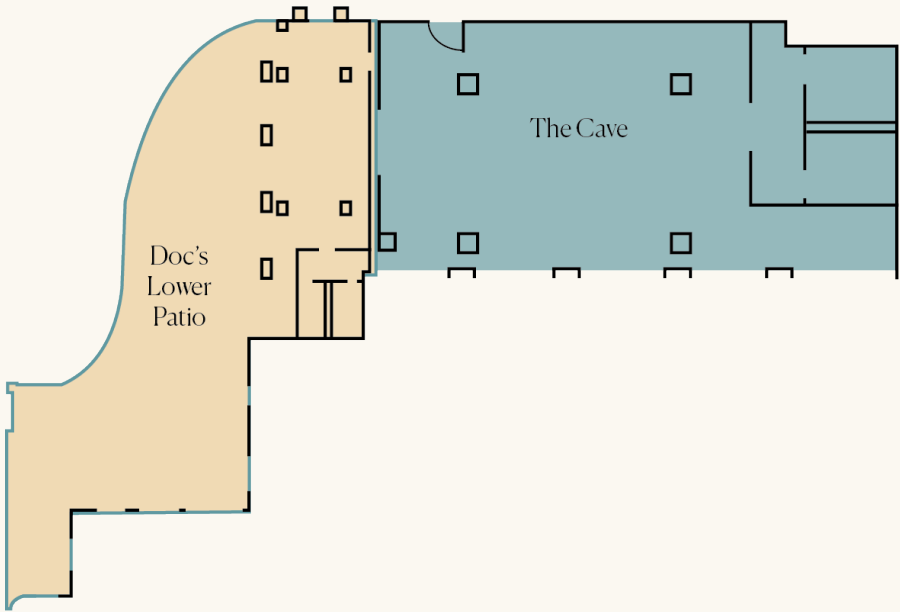
Roosevelt Ballroom | Divisible into three individual meeting rooms

Room	Dim.	SF	Ceiling Height	Theatre	Classroom	Banquet	Reception
Roosevelt Ballroom	67x75	5025	14'	550	200	260	500
Holway Room	67x75	1675	14'	185	70	80	175
Garner Room	67x75	1675	14'	185	70	80	175
Roosevelt Room	67x75	1675	14'	185	70	80	175



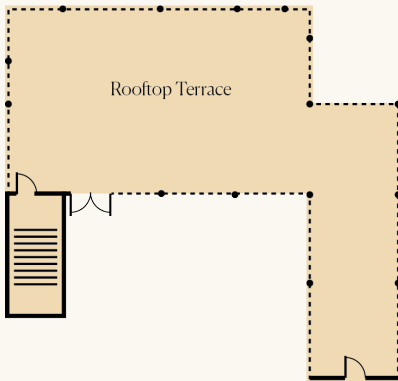
Holdermann Ballroom | Divisible into three individual meeting rooms

Room	Dim.	SF	Ceiling Height	Theatre	Classroom	Banquet	Reception
Holderman Ballroom	68x30	2040	10'	225	85	90	225
Overton Room	22x30	650	10'	70	30	40	70
Nigh Room	22x30	650	10'	70	30	40	70
Holderman Room	25x30	740	10'	80	35	50	80



Doc's Lower Patio

Space	SF	Banquet	Reception
Doc's Lower Patio	6000	90	150
The Cave	1240	40	60

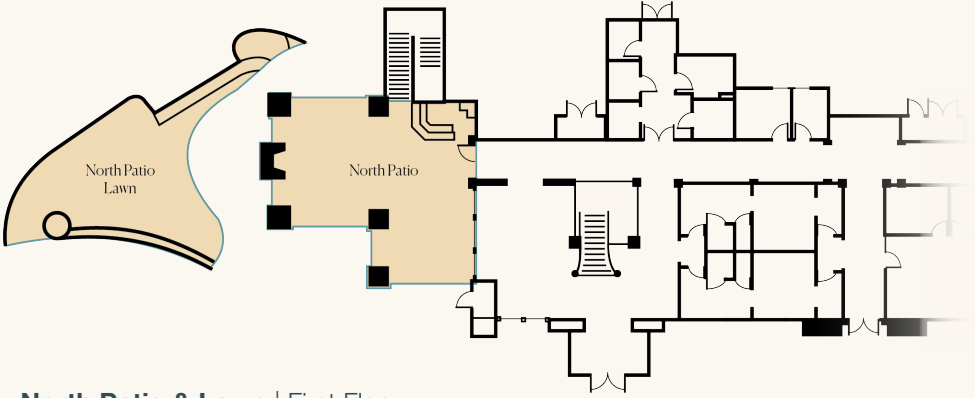


Rooftop Terrace

Space	SF	Banquet	Reception
Rooftop Terrace	1625	40	100

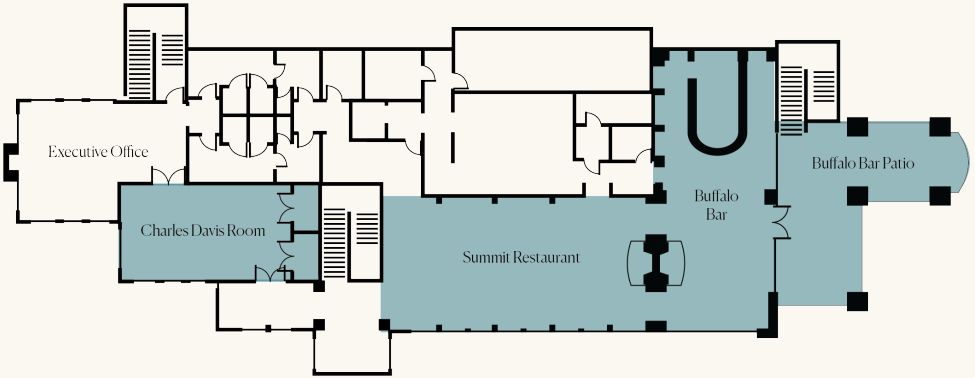
Hotel Front Entrance

Space	SF	Banquet	Reception
Grand Lawn	56628	400	700



North Patio & Lawn | First Floor

Space	SF	Banquet	Reception	Theatre
North Patio	1255	40	75	75
North Patio Lawn	2756	60	100	-



North Patio & Lawn | Second Floor

Room	SF	Banquet	Reception	Theatre	Crescent Rounds
Summit	1275	58	75	-	-
Buffalo Bar	1475	42	25	-	-
Buffalo Patio	920	36	25	-	-
Charles Davis Room	625	40	60	50	40
Willingham Room	-	32	-	50	-



Easily Accessible

Shangri-La Resort is located at the tip of Monkey Island in the center of northeastern Oklahoma's beautiful Grand Lake O' the Cherokees. All facilities are available by land, water and air. Nearby Grand Lake Regional Airport with its 3,925-foot runway Grove Municipal Airport with a 5,250-foot runway is a short car ride away. Shuttle service is available to local airports. Transportation can be arranged to and from the regional Airports. Commercial air travelers can utilize either Tulsa International Airport [TUL], Northwest Arkansas Regional Airport [XNA], or Joplin [JLN], which are slightly more than an hour drive.