

ALMANAC X

ALCRON PRAGUE

HOST & BE HOSTED

Find your story in Almanac X Alcron Prague with inspiring spaces designed for mindful business meetings, legendary reunions, and parties to remember forever.

204 fresh and stylish guest rooms in the heart of the city that sparked creativity and connections for centuries.

From our iconic Crystal Ballroom under a glass atrium roof with adjoining meeting rooms and space of a total of 544m² to the culinary art hotspot at our Alcron Restaurant, the choice for impressing is yours.



ROOMS

- 117 Almanac X rooms
- 61 Deluxe rooms
- 13 Junior suites
- 9 Executive suites
- 3 Almanac X Castle suites
- 1 Presidential suite

FACILITIES

- Alcron restaurant & bar
- Specialty coffee shop
- Fully-equipped gym
- Saunas & massages
- Private garage
- Free Wi-Fi internet (1GB/s)



TRANSPORTATION

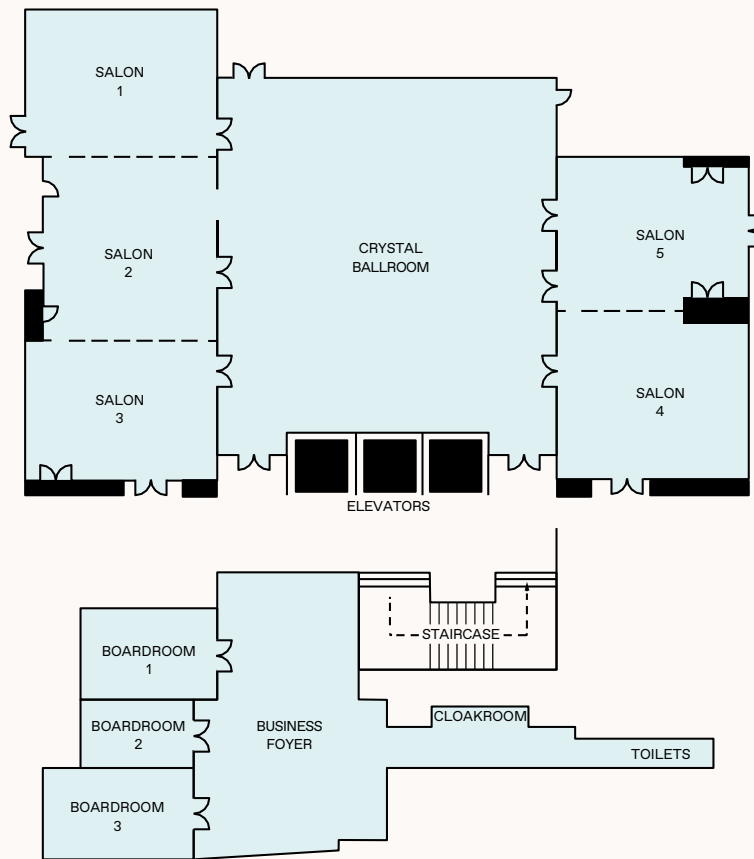
Distance from:

- Vaclav Havel Prague Airport: 16km (10.3mi)
- Main train station: 1 km (0.6 mi)
- Main bus station: 2 km (1.2 mi)

CONTACT

- ✉ meetings.prague@almanachotels.com
- 🌐 almanachotels.com/prague
- ☎ +420 222 820 222

Almanac X Alcron Prague
Štěpánská 40, 110 00 Prague
Czech Republic



Room	SQM	Height (M)	Room Dim (m)	Max Capacity	Board-room	Theatre	Class Room	U-Shape	Banquet	Coctail	Cabaret
Crystal Ballroom	215	4.1	15×15	200	45	200	120	45	130	200	80
Boardroom 1	22	2.2	6×4	10	10	-	-	-	-	-	-
Boardroom 2	12	2.2	4×3	6	6	-	-	-	-	-	-
Boardroom 3	22	2.2	4×6	10	10	-	-	-	-	-	-
Salon 1	60	2.2	8×8	42	24	42	30	21	28	40	22
Salon 2	41	2.2	7×6	30	18	30	24	19	20	30	16
Salon 3	60	2.2	8×8	42	24	42	30	21	28	40	22
Salon 4	56	2.2	7×8	42	24	42	30	21	28	40	22
Salon 5	56	2.2	7×8	42	24	42	30	21	28	40	22
Salon 1+2	105	2.2	13×8	72	32	72	36	32	40	70	32
Salon 2+3	105	2.2	8×13	72	32	72	36	32	40	70	32
Salon 1+2+3	165	2.2	8×21	110	42	90	54	42	60	110	48
Salon 4+5	112	2.2	8×14	80	32	72	36	32	40	80	32
Business Foyer	70	2.2	10×7	150	-	-	-	-	-	150	-