

A photograph of three women in formal, strapless dresses standing in a grand, ornate hallway. They are all looking upwards with expressions of awe and admiration. The woman on the left is wearing a brown dress with a large ruffle. The woman in the middle is wearing a dark dress. The woman on the right is wearing a light blue dress. The hallway has high ceilings, large windows, and decorative architectural details.

MAGNIFIQUE MEETINGS



EXPERIENCE JOIE DE VIVRE IN THE
HEART OF THE SYDNEY CBD

S O F I T E L
SYDNEY WENTWORTH

BEST CONFERENCE VENUE IN SYDNEY



Sofitel Sydney Wentworth has been hosting events since 1966 and has gained a stellar reputation for its sophisticated historical venue and signature French hospitality. Whether it be a celebration with family, friends or colleagues, an award ceremony, birthday, success celebration, bachelor or bachelorette party or wedding...

Sofitel Sydney Wentworth will host your event with flair.

From the most serious professional events to the most frivolous or from the most understated to the most extravagant!

There is a world of possibilities for your event at Sofitel Sydney Wentworth.

TABLE OF CONTENTS



Rooms & Suites	04
Club Sofitel Lounge	10
Dining	11
Conference Packages	14
Specialty Food Stations	18
Capacity & Floorplans	23
Technical Event Services & Hybrid Solutions	32

ACCOMMODATION ROOMS



Discover the perfect blend of classic European style and Sofitel luxury, from 436 beautifully appointed rooms and suites that gracefully curves the terrace.

CLASSIC ROOM

24-25.5sqm, king bed or two twin beds



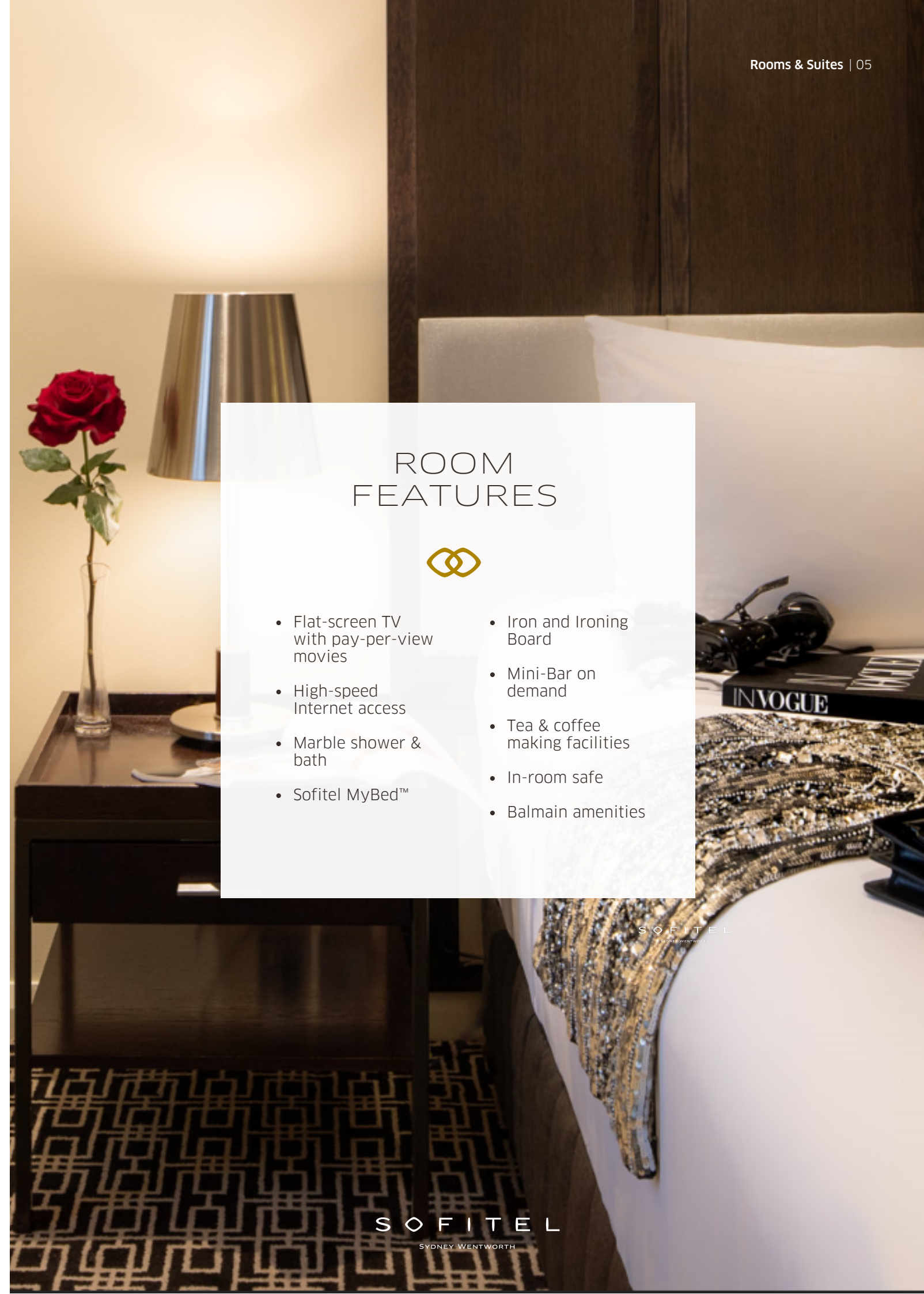
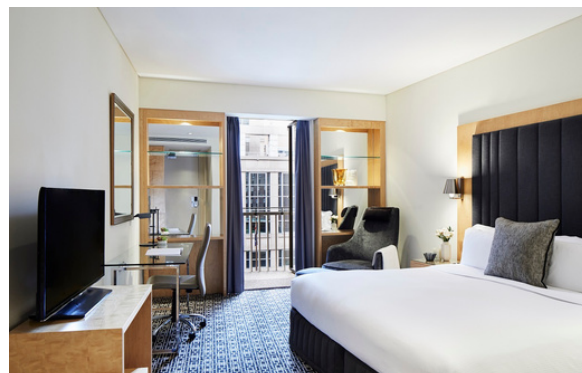
SUPERIOR ROOM

28sqm, king bed, two twin beds or two double beds



LUXURY ROOM

28sqm, king bed or two twin beds



ROOM FEATURES



- Flat-screen TV with pay-per-view movies
- High-speed Internet access
- Marble shower & bath
- Sofitel MyBed™
- Iron and Ironing Board
- Mini-Bar on demand
- Tea & coffee making facilities
- In-room safe
- Balmain amenities



“ SLEEP THE FRENCH WAY... ”

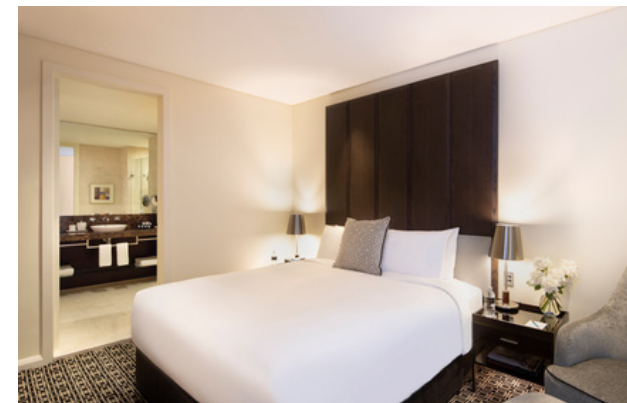
THE SUITE LIFE



Immerse yourself in a bath with bespoke French Balmain amenities before sinking into your Sofitel MyBed™. Unwind a peaceful retreat for the night.

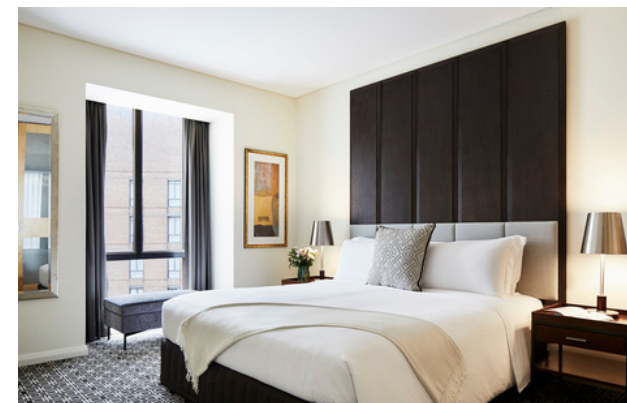
JUNIOR SUITE

42sqm, king bed or two twin beds



PRESTIGE SUITE

51sqm, king bed or two twin beds



THE WENTWORTH SUITE



Located on the 8th floor with Juliet balconies overlooking the Garden Courtyard, the Wentworth Suite is our most exclusive luxury accommodation. Adding to the legend, Princess Diana once used the suite to prepare for a Grand Ballroom function, where famous footage was taken of Prince Charles spinning her whilst dancing.

Wentworth Suite guests enjoy access to Club Sofitel. Situated on level 5 and opening onto the Garden Courtyard, Club Sofitel features a private lounge serving breakfast, afternoon tea and evening canapés. Our dedicated Team of Club Sofitel ambassadors will make your stay truly magnifique.

Wentworth Suite

145sqm, one king bed, guest powder room, main bathroom, dressing area, interconnecting accommodation and private entrances



SUITE FEATURES



- Spacious living room area
- Separate dining room, seating up to 12 people, with adjoining kitchenette
- Bedroom with one king size bed
- Guest powder room
- Main bathroom
- Dressing area
- Interconnecting accommodation
- Private entrances
- Access to Club Sofitel Lounge on level 5



CLUB SOFITEL LOUNGE



Club Sofitel Lounge is a private oasis, offering club guests the perfect space to relax, catch up on work or meet with colleagues.

- Exclusive access to the Velvet Room located on level 5
 - Priority check-in/out
 - Daily breakfast in lounge
 - Food & beverage refreshments through the day
 - Complimentary afternoon tea and early evening beverages with canapés
- Dedicated guest services manager and butler service

"LUXURY IS
TIME AND SPACE..."

CONFERENCE PACKAGES



For Magnifique events, trust Sofitel's meticulous attention to detail and creative vision that extends beyond the details. From sumptuous cuisine to dramatic décor, Sofitel event planners provide seamless organisation and a stunning stage for your inspired meetings. As the first international 5-star hotel to open, we have long been established as the city's crème de le crème venue for meetings, conferences and gala events.

Being one of Sydney's largest conferencing venues, the team at Sofitel Sydney Wentworth provide you with the knowledge and expertise to make your vision of your ideal event come true. Be inspired by creative event planning from intimate soirées to lavish banquets, boardroom meetings, large conferences to product launches. Enjoy menus blending French and local flavours, champagne and cocktails. There is a world of possibilities for event planners.

BREAKFAST

Continental breakfast from \$32
Minimum 30 guests

Wellness breakfast from \$36
Minimum 30 guests

ELEVATED EVENTS

Access to car hoist

Barista coffee cart hire

All vegetarian or vegan menu

In-Suite private events in
the Wentworth Suite

Specialty menus

FULL DAY DELEGATE PACKAGE \$130

Arrival tea and coffee

Wellness or focused morning tea

Set standing working lunch buffet

Set energised or focused afternoon tea

Sparkling and mineral water

Notepads and pens

HALF-DAY DELEGATE PACKAGE \$122

Arrival tea and coffee

Set energised or focused morning tea or
afternoon tea

Set standing working lunch buffet

Sparkling and mineral water

Notepads and pens

LUNCH & DINNER PACKAGES



Executive Chef, Bektas Ozcan, offers guests a magnifique discovery of French gastronomy infused with contemporary Australian cuisine.

WORKING LUNCH PACKAGES

Minimum 30 guests

Light working lunch
From \$55.00 per guest

Working lunch
From \$65.00 per guest

PLATED LUNCH & DINNER PACKAGES

Minimum 10 to 30 guests

2 courses from \$80.00 per person
3 courses from \$100.00 per person

Choice of alternate serves from
\$5.00 per person per course at
minimum 30 guests.

LUNCH & DINNER BUFFET PACKAGES

Minimum 30 guests

Menu A at \$92.00 per person
Menu B at \$112.00 per person
Menu C at \$75.00 per person





COCKTAIL CANAPÉ PACKAGES

MINIMUM 25 GUESTS



Let us assist you with the organization leading up to the big event. Then, when the day comes, truly enjoy the present moment like all your guests. Our team will listen to your desires to design a tailor-made event adapted to your needs, to make the vision of your ideal event come true.

You will be captivated by the prestigious address, the luxurious setting, the French art de vivre, the fresh and seasonal French gastronomie designed by Executive Chef Boris Cuzon and the personalised service.

**We recommend a minimum of 5 canapés (from \$30) per person
Additional canapés will be \$6.00 per canape item**

1/2 hour

We recommend a minimum of 3 canapés (from \$22.00)
per person: 2 cold canapés, 1 hot canapés

1 hours

We recommend a minimum of 6 canapés (from \$38.00)
per person: 3 cold canapés, 3 hot canapés

1 1/2 hours

We recommend a minimum of 8 canapés (from \$45.00) per
person: 4 cold canapés, 4 hot canapés

2 hours

We recommend a minimum of 10 canapés (from \$51.00) per
person: 4 cold canapés, 4 hot canapés & 2 dessert canapés

3 hours

We recommend a minimum of 11 canapés (from \$58.00) per
person: 4 cold canapés, 4 hot canapés, 1 substantial & 2
dessert canapés

COCKTAIL BEVERAGE PACKAGES



CLASSIC PACKAGE

- 1 hour package from \$33.00 per person
- 2 hours package from \$39.00 per person
- 3 hours package from \$44.00 per person
- Extension Time of 1 hour \$13.50pp per hour

DELUXE PACKAGE

- 1 hour package from \$36.00 per person
- 2 hour package from \$41.00 per person
- 3 hour package from \$46.00 per person
- Extension Time of 1 hour \$13.50pp per hour
- Spirits available in package for \$10.00pp per hour

PREMIUM PACKAGE

- 1 hour package from \$38.00 per person
- 2 hour package from \$43.00 per person
- 3 hour package from \$48.00 per person
- Extension Time of 1 hour \$14.50 pp per hour
- Spirits available in package for \$10.00pp per hour

WENTWORTH PACKAGE

- 1 hour package from \$64.00 per person
- 2 hour package from \$73.00 per person
- 3 hour package from \$82.00 per person
- Extension Time of 1 hour \$15.00pp per hour
- Spirits available in package for \$10.00pp per hour



SPECIALTY FOOD STATIONS

MINIMUM 25 GUESTS



FORMAGER/CHEESE STATION

From \$35.00 per person

Millawa Blue, Meridith Goats Cheese, Maffra Cheddar, Camembert and Gorgonzola. Served with chutney, grapes, dried fruits and nuts, breadsticks, water crackers and sliced breads.

ARTISAN CHARCUTERIE STATION

From \$32.00 per person

Soft flowery, washed rind, hard, blue, goat cheese (selection of 3). Bread rolls and crackers, dried fruits, Muscat, grapes, fig jam, walnuts.

A LA DECOUPE/CARVERY STATION

From \$29.00 per person

Beautiful roasted beef, pork and grilled salmon. Side dishes include potato dauphinois & roasted Mediterranean vegetables

MARAICHER/VEGETABLE STATION

From \$35.00 per person

Beautiful assortment of organic vegetarian dishes accompanied with a seasonal wellness shooter.

ECAILLER/OYSTER STATION

From \$35.00 per person

Live oyster shucker of Sydney Rock oysters, Pacific oysters and prawns (GF) Served with traditional sauces and condiments.

CHINATOWN STATION

From \$20.00 per person

Cantonese vegetable spring rolls and assortment of Dim Sum. Served with traditional sauces and condiments.

360 VIRTUAL WALKTHROUGH

Sofitel Sydney Wentworth is excited to announce the arrival of its innovative 360* Virtual Tour! We invite you to click on the Sofitel Link and immerse yourself within each aspect of our beautiful hotel.

Picture your future magnifique event in true detail.

ACCORHOTELS
CLICK ON THE LINK TO EXPLORE OUR
MAGNIFIQUE MEETING SPACES

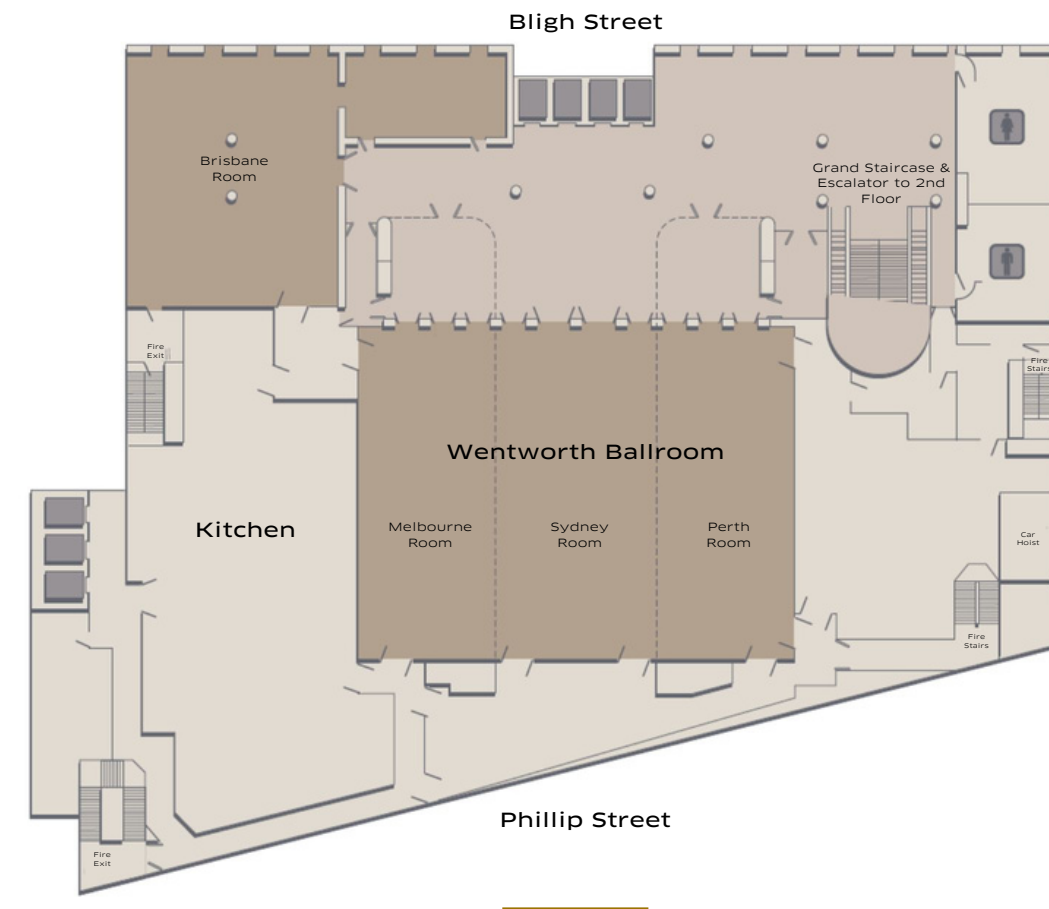




CAPACITY & FLOORPLANS



THIRD FLOOR MEETING ROOM LAYOUT

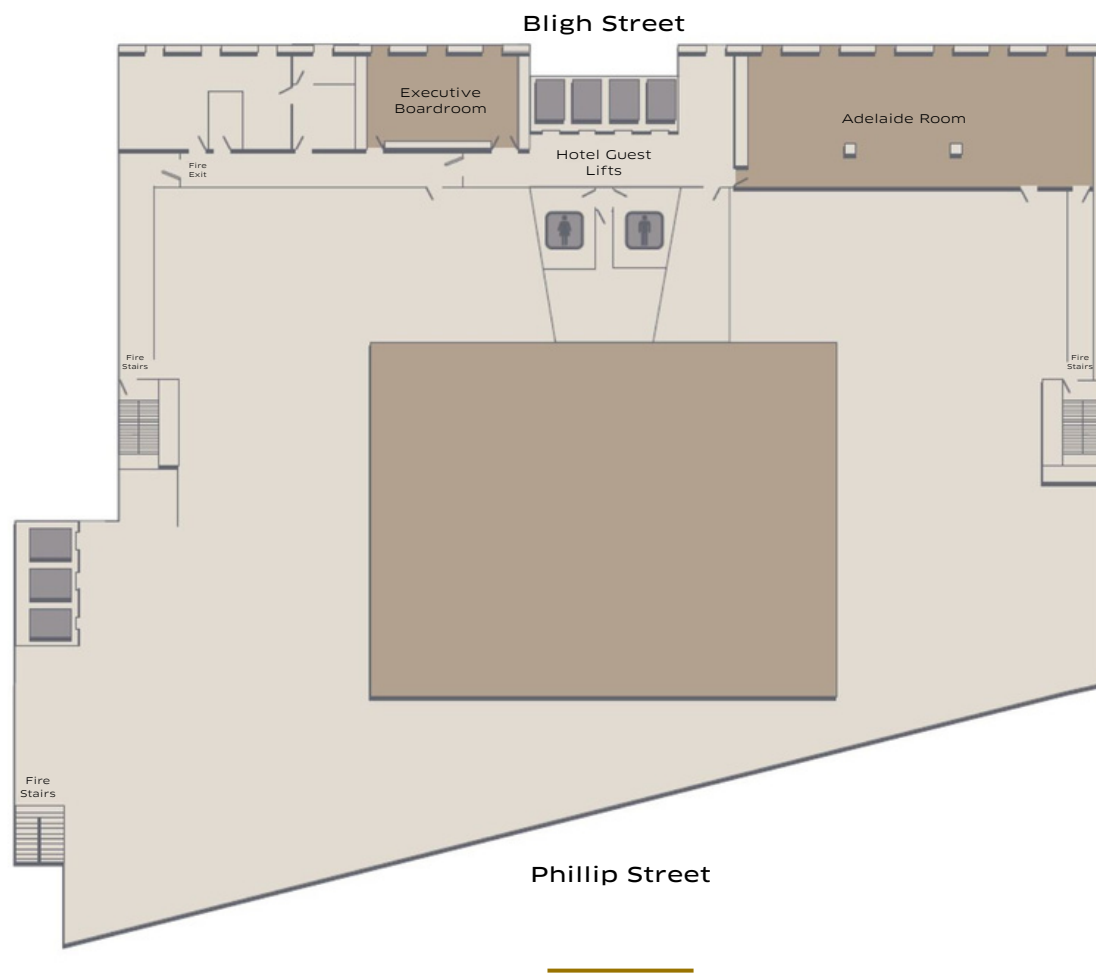


Function Rooms	Area SQM	Dimension	Ceiling Height						Maximum		
				Boardroom	Theatre	Classroom	Cabaret	Banquet	Round Tables	U-Shape	Cocktail
Wentworth Ballroom	629	22m x 28.6m	5.3m	-	750	468	432	540	54	-	750
Perth	198	22m x 9.0m	5.3m	66	266	156	136	170	17	72	340
Sydney	229	22m x 10.4m	5.3m	66	304	156	144	180	18	72	360
Melbourne	198	22m x 9.0m	5.3m	66	266	156	136	170	17	72	340
Brisbane	227	16.8m x 13.5m	2.7m	54	200	81	96	180	18	54	200
Canberra	55	9.8m x 5.9m	2.7m	26	51	27	32	40	4	27	40
Level 3 Foyer	468	36m x 10.8m	2.7m	-	-	-	-	-	-	-	500

CAPACITY & FLOORPLANS



FOURTH FLOOR MEETING ROOM LAYOUT



Function Rooms	Area SQM	Dimension	Ceiling Height	Boardroom	Theatre	Classroom	Cabaret	Banquet	Maximum Round Tables	U-Shape	Cocktail
Adelaide	165	20.9m x 7.9m	2.4m	58	140	66	80	100	10	65	140
Executive Boardroom	46	8m x 5.76m	2.4m	16	-	-	-	-	-	-	-

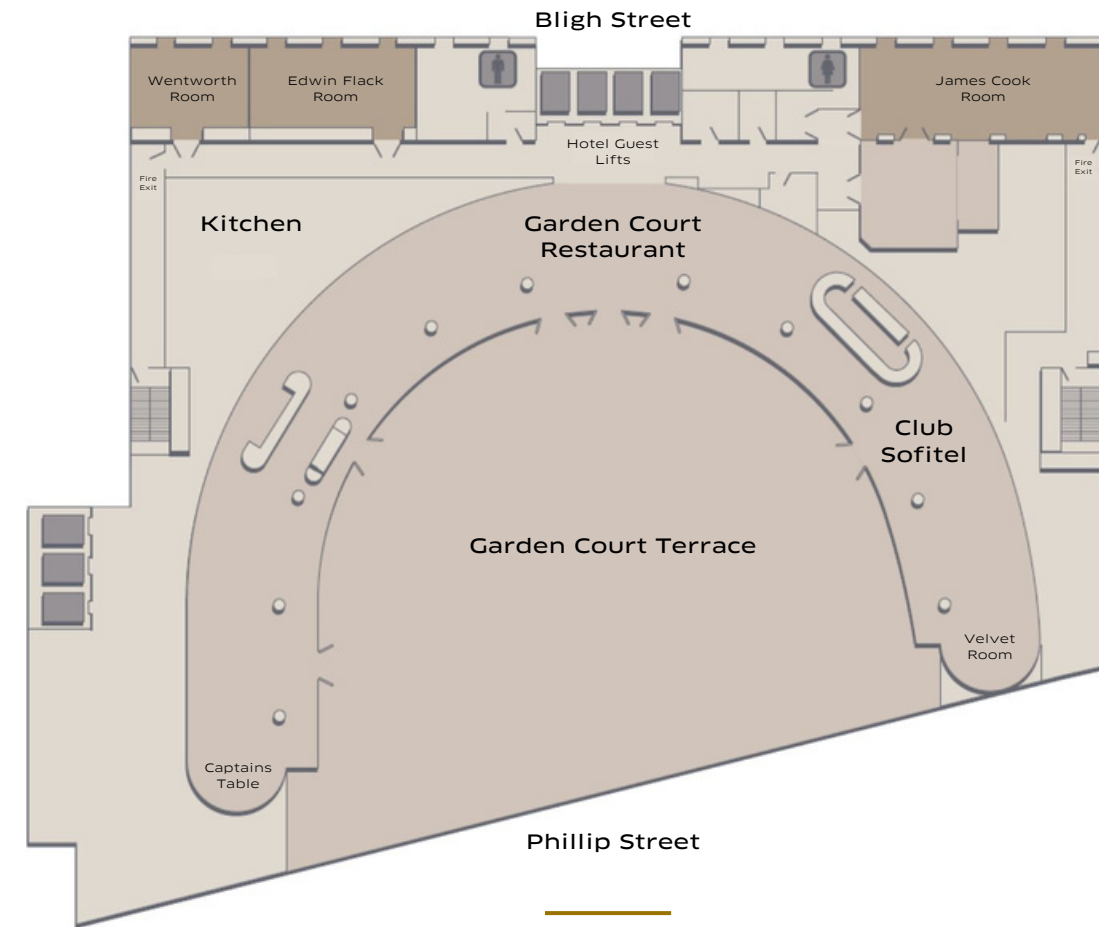


“ELEVATE YOUR MAGNIFIQUE MEETING EXPERIENCE...”

CAPACITY & FLOORPLANS



FIFTH FLOOR MEETING ROOM LAYOUT



Function Rooms	Area SQM	Dimension	Ceiling Height	Boardroom	Theatre	Classroom	Cabaret	Banquet	Maximum Round Tables	U-Shape	Cocktail
Edwin Flack	57	10.7m x 5.7m	3.2m	30	50	33	32	40	4	30	50
Wentworth	41	7.45m x 5.7m	3.2m	18	35	21	16	20	2	18	30
James Cook	69	13.8m x 5m	3.2m	36	50	20	40	50	5	36	60
Velvet Room	59	9.15m x 6.5m	3.2m	12	20	-	24	20	2	-	30

TECHNICAL EVENT SERVICES & HYBRID SOLUTIONS



Dedicated Technical Support & State-of-the-Art Technology

Sofitel Sydney Wentworth partners with award winning event specialists Encore Event Technologies for delivery of event services in our hotel. They have delivered some of the largest conferences and events in Australia and have locations throughout the Asia Pacific. They work in-house with our teams and are experts at delivering events in our hotel.

Encore also offers a complete event service including superior audio-visual technology, styling, set design, multimedia, production management, social media, live polling, mobile apps and more.

Encore has developed a new suite of hybrid and virtual services enabling events to be delivered with presenters and attendees from anywhere in the world.

These Include:
 Live streaming
 Video conferencing
 Interactive event streaming platform
 Managed webinars and webcasting
 Audience polling
 Social media integration
 Event apps

CONTACT

+61 2 9556 8888 or e-mail details directly to
sofitelsydney@encore-anzpac.com

SOFITEL
 SYDNEY WENTWORTH



SOFITEL
 SYDNEY WENTWORTH



SOFITEL SYDNEY WENTWORTH



61/101 Phillip St, Sydney, NSW, 2000

T: +61 (02) 9228 9188

E: H3665@sofitel.com

W: sofitelsydney.com.au