

# PELHAM HOUSE RESORT



Meeting Room Name	Square Footage	Dimensions
<i>Outdoor Venues</i>		
The Pool Deck	2000	40x50
Beach	21,600	480x45
Lawn	6480	144x45
<i>Pre-function/Offices/Registration Venues/Breakout</i>		
The Lobby Bar	1288	32x40
Garden View Suite	286	22x13
<i>Meeting and/or Private Dining Space</i>		
Nantucket Sound Room	506	22x23
Sea Level Ballroom	3600	90x40
The Patio (partially covered off Sea Level Ballroom	1800	90x20
The Rooftop Bar	405	9x45
The Rooftop	1610	70x23





# 14 SEA STREET



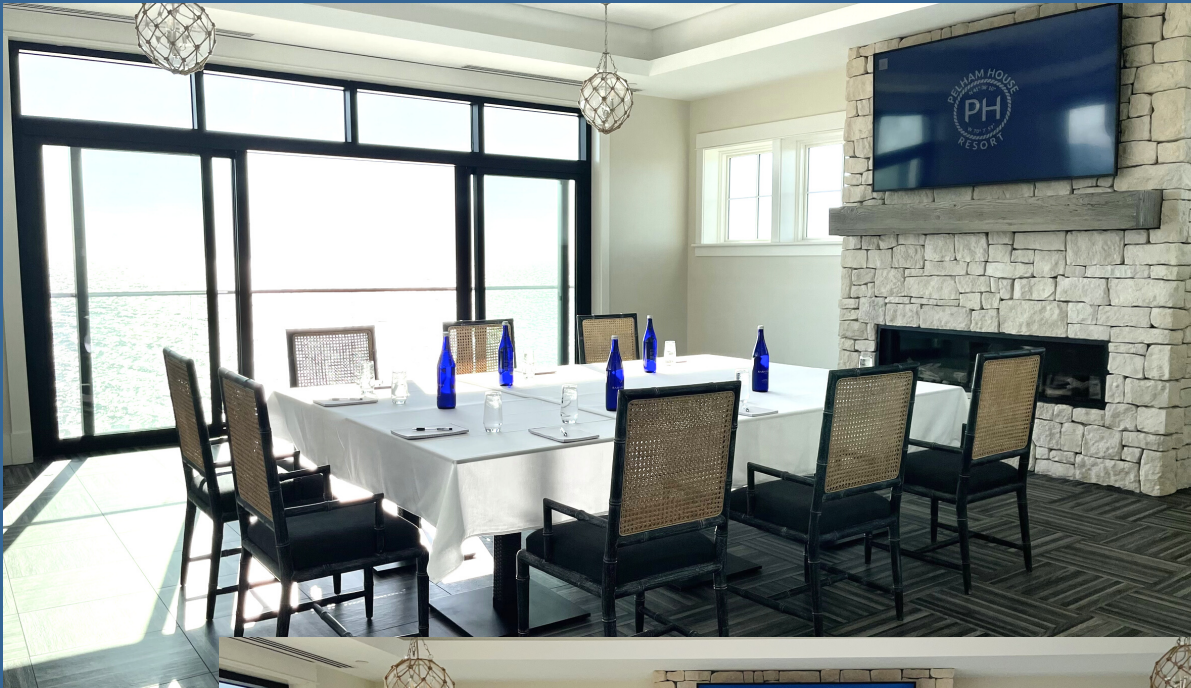
A view from the lawn facing the patio with firepits and glass doors into the Sea Street Ballroom, located on the first floor.

The top left window opens into the Nantucket Sound Room.  
On the top right side you can see the rooftop dining area which can be covered and heated.





# NANTUCKET SOUND ROOM



Our Nantucket Sound Room has a second floor view of the ocean. On a clear day, you can even see Monomoy Island from this space. The balcony doors open allowing fresh air and nature sounds into your meeting space. This room sets beautifully as a boardroom or U-shape. The fireplace and plasma T.V. make this a great space to get a lot of work accomplished.





# GARDEN VIEW SUITE





# LOBBY BAR



The Lobby Bar has a built in bar but plenty of room for a nice registration or welcome area. It could also be used for boxed lunches, a staggered welcome reception or even a small breakout. Try hosting a night cap cordial or martini bar in this event space. It is steps from our outdoor pool.



# SEA LEVEL BALLROOM



Cape Cod's newest ballroom, Sea Level Ballroom, overlooks Nantucket Sound. It boasts 18' ceilings, tons of natural light, a beautiful fireplace, built in bar, state-of-the art audio visual equipment and opens onto its private patio (partially covered), our lawn and of course our private beach.





# PATIO





# OVER 400FT PRIVATE BEACH





# FLOOR PLANS

