

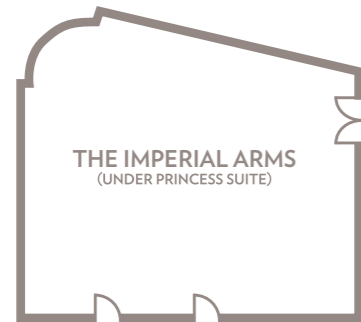


Floorplans and capacity charts

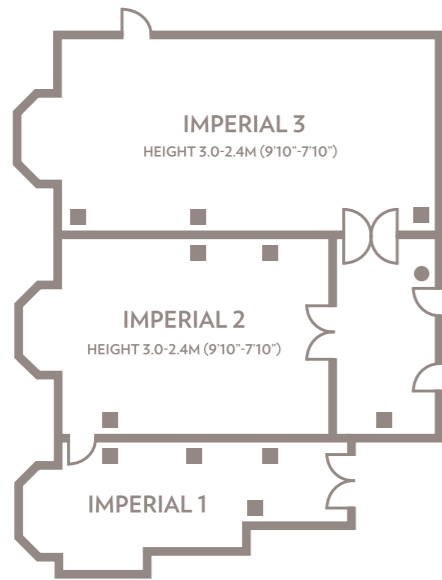
THE
IMPERIAL
HOTEL
BLACKPOOL

Floorplans

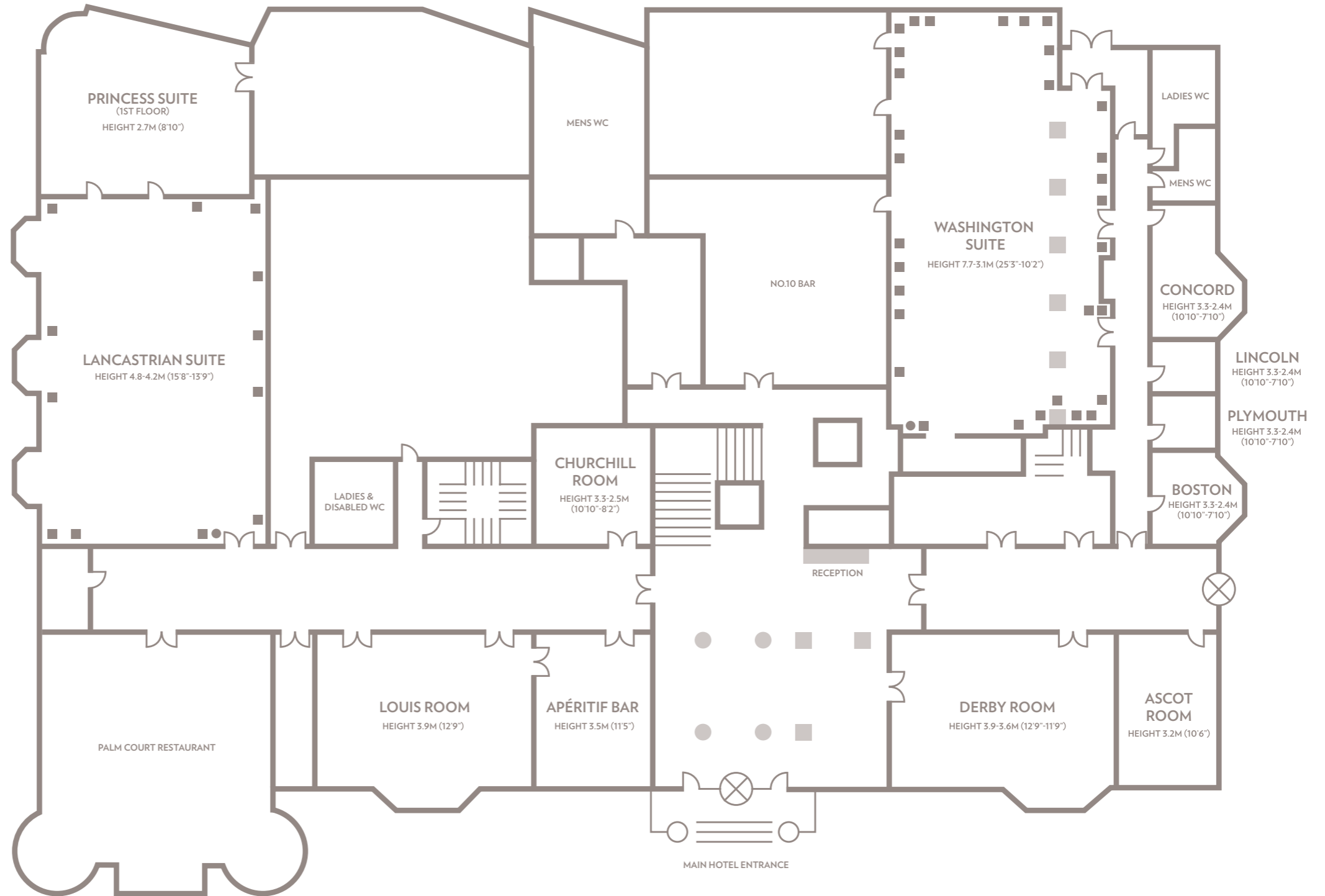
Ground Floor



Lower Ground Floor



First Floor



Room Capacities

	Maximum Capacities									Dimensions					Lighting					General		
	Theatre	Theatre (Back Projection)	Classroom	Boardroom	U-Shape	Cabaret	Cabaret (Back Projection)	Banquet	Dinner Dance	Length (m)	Width	Max. Ceiling Height	Min. Ceiling Height	Room Area (sq m)	Controls in Room	Tungsten	Dimmers	Blackout	Natural Light	3 Phase	Air Conditioning	Free WiFi
Lancastrian Suite	600	412	280	120	100	320	240	400	340	25.3	16.4	4.8	4.2	415	•	-	•	•	•	•	•	•
Washington Suite	350	300	200	80	72	144	120	240	200	26.5	14.6	7.7	3.1	387	•	•	•	•	-	•	-	•
Princess Room	140	90	50	40	32	64	48	100	84	12.3	15.2	2.7	2.7	187.9	•	•	-	-	•	-	-	•
Louis Room	100	60	36	30	30	48	32	84	68	13.8	7.2	3.9	3.9	99.3	•	•	•	•	•	-	-	•
Churchill Room	60	40	36	26	24	40	-	50	40	7.6	8	3.3	2.5	60.8	•	-	-	•	-	-	-	•
Derby Room	50	30	30	24	24	32	-	50	-	7.4	7	3.9	3.6	51.8	•	-	•	-	•	-	-	•
Aperitif Room	40	-	18	20	16	24	-	-	-	7.9	7	3.5	3.5	55.3	•	-	-	-	•	-	-	•
Concord Room	35	-	12	20	16	16	-	24	-	4.3	7.1	3.3	2.4	30.5	•	-	-	•	•	-	-	•
Ascot Room	20	-	-	12	-	-	-	14	-	7.2	3.9	3.2	3.2	28	•	-	-	•	•	-	-	•
Boston Room	24	-	12	12	12	-	-	-	-	4.3	3.3	3.3	2.4	22.7	•	-	-	•	•	-	-	•
Lincoln Room	10	-	4	6	-	-	-	-	-	4.3	3.3	3.3	2.4	15.5	•	-	-	•	•	-	-	•
Plymouth Room	10	-	4	6	-	-	-	-	-	4.3	3.3	3.3	2.4	14.6	•	•	-	-	•	-	-	-
Imperial 2 Room	70	40	48	30	28	48	24	60	48	12.1	3.0	3.0	2.4	104.6	•	•	-	-	•	-	-	-
Imperial 3 Room	140	100	80	44	32	64	48	84	72	15.2	3.0	3.0	2.4	126.9	•	•	-	-	•	-	-	-

• Available – Not Available



For more information, contact our Meetings and Events Team on **01253 623971**
or email events@imperialhotelblackpool.co.uk