



RICHMOND HILL HOTEL

MEETING & EVENTS CAPACITIES

Room	Length x Width x Height	Reception	Cabaret	Theatre	Boardroom	Classroom	U-Shape	Private Dinner	Dinner Dance
Ballroom	22 x 13 x 4	250	144	220	-	100	50	240	228
Thames	8 x 4 x 4	60	-	30	16	14	-	16	-
Richmond	14 x 12 x 3	150	64	120	30	50	40	108	96
Oak	12 x 5 x 3	80	30	72	28	18	22	-	-
Ormond	11 x 8 x 3	-	45	70	22	30	26	-	-
Stafford	11 x 5 x 3	50	30	32	24	18	22	30	-
Cambrian	7 x 6 x 3	-	-	-	12	-	-	16	-
Queens	8 x 6 x 4	50	32	50	25	16	20	40	-
Beaufort	6 x 5 x 3	-	-	-	12	-	-	12	-
Chestnut	6 x 3 x 3	-	-	-	8	-	-	-	-
Birch	6 x 3 x 3	-	-	-	8	-	-	-	-
Ash	6 x 3 x 3	-	-	-	10	-	-	-	-
144 Main Restaurant	9 x 9 x 4	100	-	-	-	-	-	70	-
144 Lounge	6 x 6 x 4	30	-	-	-	-	-	-	-
144 Outdoor Terrace	10 x 6	50	-	-	-	-	-	-	-
144 Snug	5 x 4 x 4	20	-	-	-	-	-	-	-

Please note that all measurements are approximate

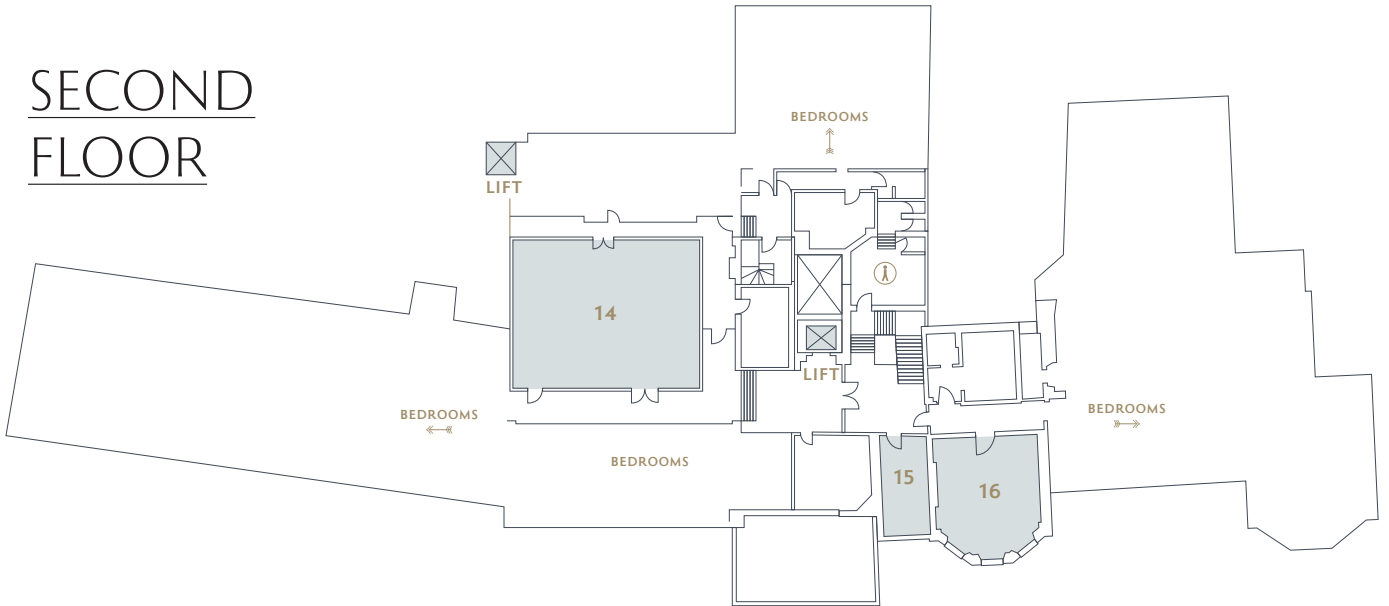
144-150 Richmond Hill, Richmond-upon-Thames, Surrey, TW10 6RW

020 8940 2247

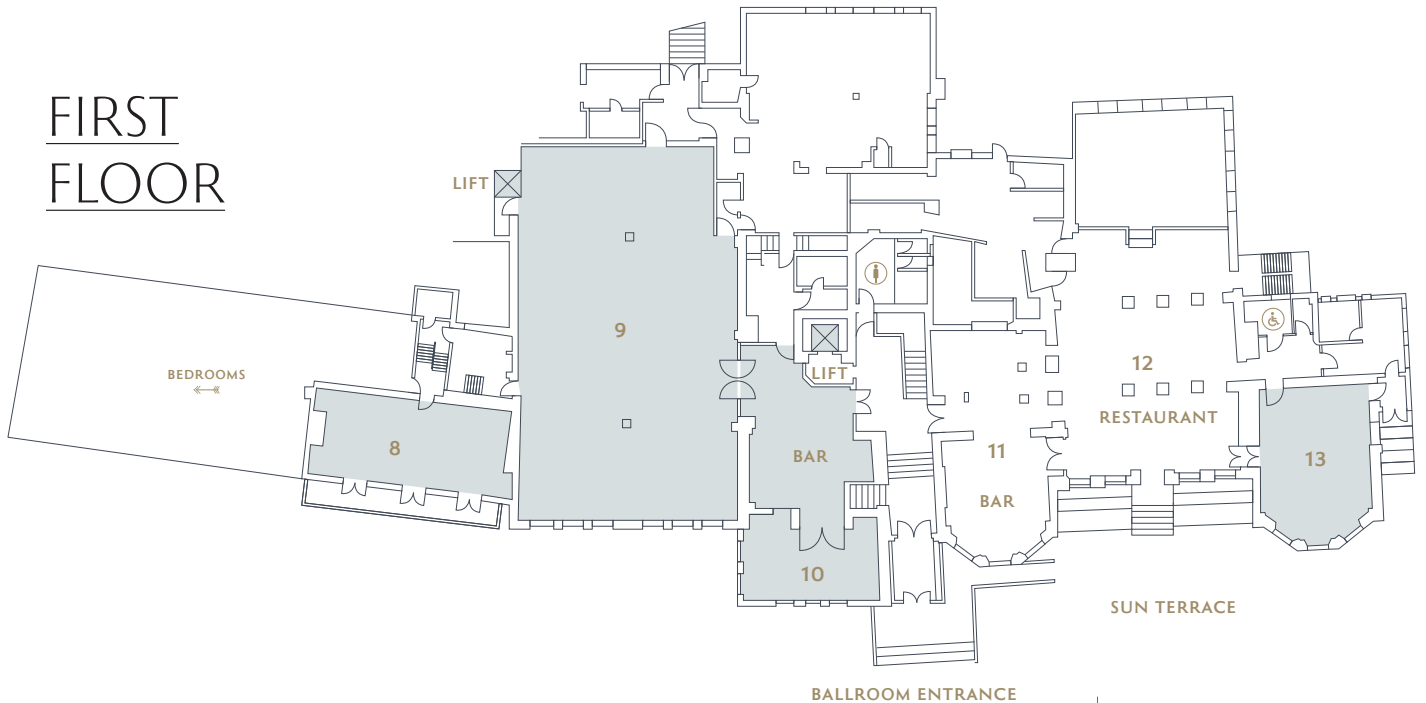
meetingsandevents@richmondhill.co.uk

www.richmondhill-hotel.co.uk

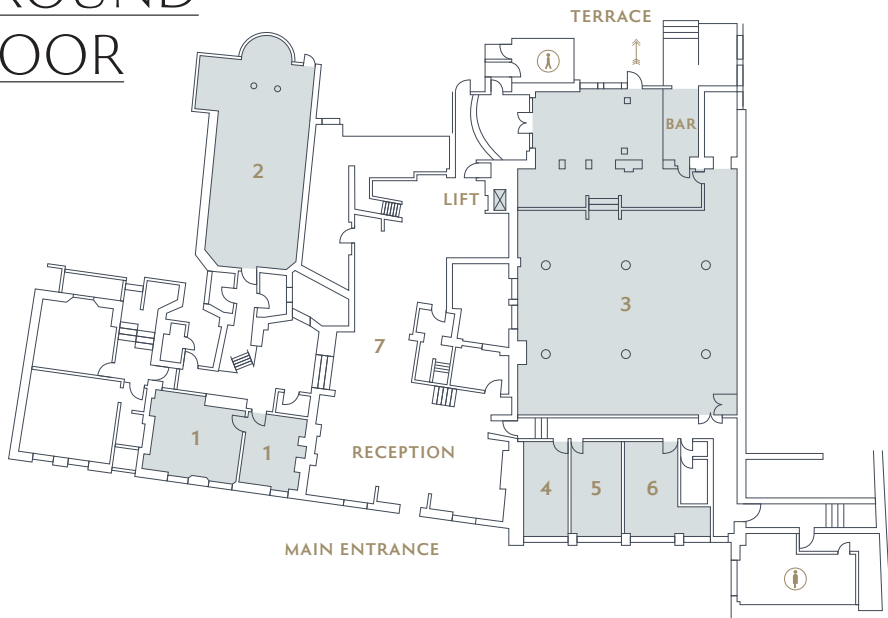
SECOND FLOOR



FIRST FLOOR



GROUND FLOOR



KEY

- 1 BEAUFORT
 - 2 OAK
 - 3 RICHMOND
 - 4 CHESTNUT
 - 5 BIRCH
 - 6 ASH
 - 7 RECEPTION
 - 8 STAFFORD
 - 9 BALLROOM
 - 10 THAMES
 - 11 BAR
 - 12 RESTAURANT
 - 13 QUEENS
 - 14 ORMOND
 - 15 WALPOLE
 - 16 CAMBRIAN
-
- MENS TOILETS
 - LADIES TOILETS
 - DISABLED TOILETS