



# UNIQUE CONFERENCES & EVENTS

MERCURE

HOTEL

CLEAR MOUNTAIN

1

**WELCOME TO  
CLEAR MOUNTAIN**



# ABOUT

## Mercure Clear Mountain

### Property Overview

Mercure Clear Mountain offers a tranquil and scenic setting for conferences and events, located just 40 minutes from Brisbane's CBD and airport. Nestled between Albany Creek and Samford, the property features sweeping views of the Glasshouse Mountains, Samford Valley, and Brisbane City, creating an inspiring backdrop for focused and productive gatherings.

The hotel includes seven versatile, light-filled event spaces, along with 51 well-appointed guest rooms with twin-share options. Onsite facilities include complimentary parking, an onsite restaurant and bar, and purpose-built conference areas with pre-function spaces and seamless access to accommodation and amenities.

Reception is open daily from 7.00am to 7.30pm. After-hours arrivals are supported by the onsite resident manager, accessible via the main hotel number. Mercure Clear Mountain provides the space, privacy and comfort to step away from the city and connect with purpose.



# 2

## ACCOMMODATION AND FACILITIES



# ACCOMMODATION

## Room Options

Room Type	Rooms Available	Bed Configuration
Standard Room	12 Rooms	2 Queen
Superior Special Access	1 Room	1 Double & 1 Single
Superior Room	15 Rooms	2 Queen
Deluxe Room	6 Rooms	1 Queen & 1 Single
Deluxe Room	8 Rooms	1 Queen
Privilege Room	6 Rooms	1 Queen
King Apartment	1 Apartment	1 Queen in each room
Lodge Suite	2 Suites	1 King

\*Deluxe and Privilege Rooms include free Wi-Fi, bathrobes, slippers, an espresso machine, complimentary bottle of water on arrival and mountain views

\*The 2 Bedroom Apartment has 1 bathroom with a shower, separate toilet, kitchenette, open plan living and dining, large balcony and laundry cupboard



# ACCOMMODATION

## Room Inclusions

Standard Room	Superior Room	Deluxe Rooms	Privilege Rooms	King Apartment	Lodge Suites
Standard rooms offer modern finishings and runs adjacent to the onsite outdoor pool.	Superior rooms offer views of the Glasshouse Mountains, Native Bush and Brisbane CBD.	Deluxe rooms are designed with elegant modern finishing's, offering views of the Mountains.	Privilege Rooms offer elegant modern finishes with views of the Glasshouse Mountains.	The King Apartment offers spacious comfort with views of Brisbane City & Lake Samsonvale.	Lodge Suites offer elegant finishes with views of the market gardens, bushland and Lake Samsonvale.
<b><i>Includes:</i></b> Luxury feather bedding Private Ensuite with shower only Work station with lamp Foxtel Tea and coffee making facilities Direct-dial telephone Wireless internet access Iron & ironing board Scheduled in house movies Private balcony	<b><i>Includes:</i></b> Luxury feather bedding Private Ensuite with shower only Work station with lamp Foxtel Tea and coffee making facilities Direct-dial telephone Wireless internet access Iron & ironing board Scheduled in house movies Private balcony	<b><i>Includes:</i></b> Luxury feather bedding Ensuite with shower only Chaise lounge Work station with lamp Foxtel Coffee machine with pods Direct-dial telephone Wireless internet access Iron & ironing board Scheduled in house movies Private balcony Bottle of water on arrival Bathrobes & slippers	<b><i>Includes:</i></b> Luxury feather bedding Chaise lounge Work station with lamp Foxtel Direct-dial telephone Wireless internet access Iron & ironing board Scheduled in house movies Private balcony Bathrobes & Slippers Bottle of water on arrival Coffee machine with pods Bathroom with rain-shower	<b><i>Includes:</i></b> Two bedrooms with luxury feather bedding Wireless internet access Foxtel Open-plan living and dining Washing Machine & Dryer Scheduled in house movies Spacious balcony Bathrobes & Slippers Bottle of water on arrival Coffee machine with pods Bathroom with shower Separate toilet Kitchenette Coffee machine with pods	<b><i>Includes:</i></b> Luxury feather bedding Foxtel Direct-dial telephone Wireless internet access Scheduled in house movies Bathrobes & Slippers Bottle of water on arrival Coffee machine with pods Bathroom with rain-shower.

# BREAKFAST WITH A VIEW

## Mandy's on the Mountain

### Buffet Breakfast - \$30

***Buffet Includes:***

Assorted Fruits,  
Assorted Cereals  
Assorted Yoghurts  
Fresh Fruit Salad  
Assorted Croissants & Danishes  
Baked Beans  
Breakfast Sausages  
Mini Pancakes  
Assorted Breads & Conserves  
Filtered Coffee & Tea  
Hash Browns  
Eggs: Scrambled/Poached/Fried  
Bacon  
Muesli  
Fresh juices

***Monday to Thursday: 7am - 9am, Friday to Sunday: 7am - 10am***

### Light Breakfast

Light breakfast options will be delivered to your meeting space.

***Options Include:***

Danishes & Croissants: \$10.50 PP  
Seasonal Fruit Platter: \$12.50 PP  
Preordered Takeaway Coffee: \$5.50 PP



# 3

## ROOM HIRE



# EVENT SPACES

## Room Options For Hire



### Conference Room Hire - \$350

Included in the Day Delegates Package for minimum 20 guests.

#### ***Inclusions:***

Conference Room hire from 8am - 5pm

1 x flip chart, note pads and pens

1 x whiteboard with markers

Ceiling mounted data projector & electronic screen including sound

Available AV equipment

Filtered water

***NB Evening reconvening will incur additional charges for servicing labor & additional room hire from \$150.00 per day***



### Breakout Room Hire - \$350

Room hire is available from 8:00 am to 5:00 pm, offering comfortable, natural-light-filled spaces ideal for smaller group discussions, workshops, or strategy sessions throughout the day.

Breakout rooms can be arranged in configurations ranging from collaborative seating to structured layouts to best suit your program.

***NB Evening reconvening will incur additional charges for servicing labor & additional room hire starting from \$150***

# EVENT SPACES

## Room Options For Hire



### Private Dining Room Hire - \$350

Due to the layout of the hotel, all conference groups will be seated in the main Lakeview / City view area at the discretion of Hotel Management.

For added privacy during your event, we can alternatively arrange private dining for delegates during meal times (subject to availability), providing a secluded space ideal for networking, focused discussions, or team connection away from the main dining area.



### Serenity Lawn Function Hire - \$1000

The Serenity Lawn offers a unique outdoor setting for corporate functions, team-building activities, or breakout sessions.

Surrounded by native bushland and expansive mountain views, this peaceful space provides a refreshing alternative to indoor venues. Ideal for wellness sessions, informal networking, or creative workshops, it encourages focus, collaboration, and fresh thinking in a naturally inspiring environment.

Versatile and open-air, the Serenity Lawn brings a sense of calm and connection to any conference itinerary.

# EQUIPMENT HIRE

## Extra Equipment

### Hire Additional Meeting Equipment

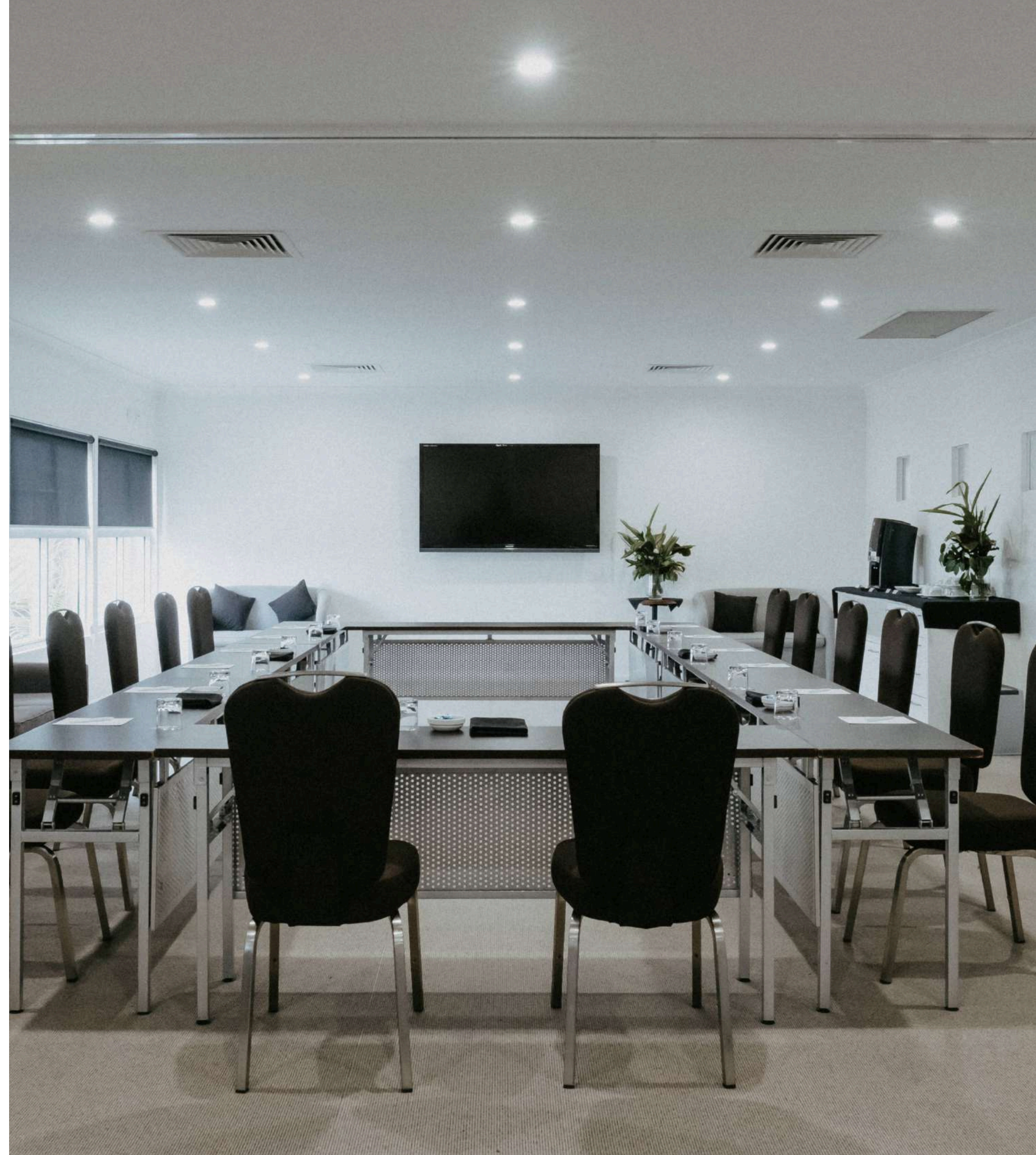
If your session requires extra tools or resources, additional equipment can be arranged upon request for an added fee. Please speak with our team when booking to ensure everything you need is ready on the day.

***Equipment Available for Hire:***

Additional flip chart with paper — \$55

Additional whiteboard — \$55

*NB Items are charged per day, prices may be subject to change without notice.*



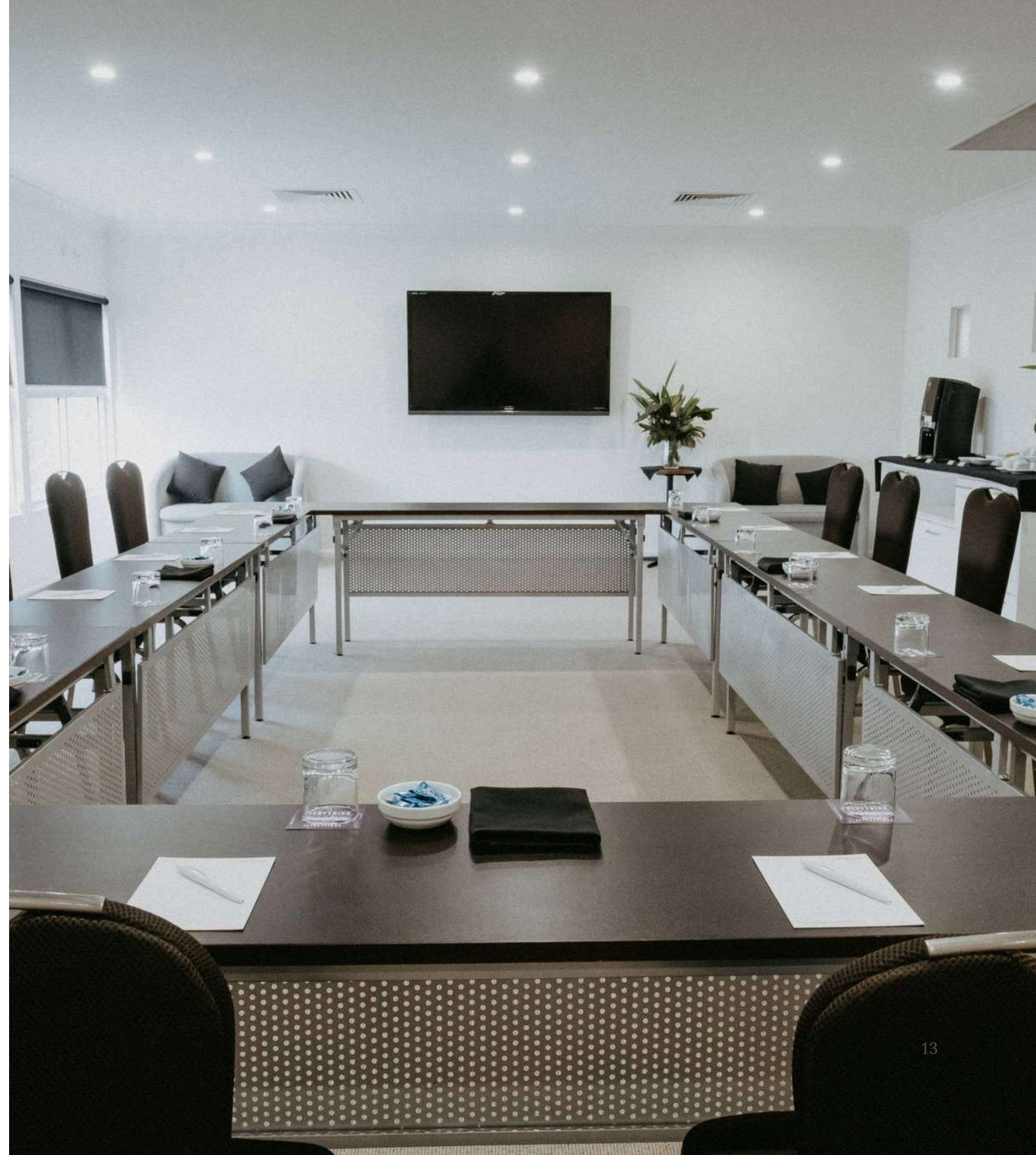
# CONFERENCE ROOMS

## Dimensions and Capacity

Room Name	Room Size	Ceiling Height	Theatre	Cabaret	U Shape	Boardroom	Classroom	Banquet	Cocktail
Flynn	64 sqm	2.7 m	40 pax	25 pax	20 pax	18 pax	28 pax	32 pax	25 pax
Banksia	120 sqm	4 m	60 pax	35 pax	32 pax	24 pax	40 pax	48 pax	45 pax
Ebert	80 sqm	2.7 m	40 pax	25 pax	20 pax	18 pax	28 pax	32 pax	35 pax
Esmonde	80 sqm	2.7 m	40 pax	25 pax	20 pax	18 pax	28 pax	32 pax	35 pax
Mackieham	80 sqm	2.7 m	40 pax	25 pax	20 pax	18 pax	28 pax	32 pax	35 pax
Ebert/Esmonde	160 sqm	2.7 m	80 pax	50 pax	40 pax	36 pax	56 pax	64 pax	75 pax
Ebert/Esmonde/ Mackieham	240 sqm	2.7 m	140 pax	75 pax	60 pax	54 pax	84 pax	100 pax	120 pax
Cole	49 sqm	2.7 m	32 pax	20 pax	16 pax	16 pax	20 pax	24 pax	25 pax
Ryan	49 sqm	2.7 m	32 pax	20 pax	16 pax	16 pax	20 pax	24 pax	25 pax
Cole/ Ryan	98 sqm	2.7 m	64 pax	40 pax	32 pax	32 pax	40 pax	48 pax	50 pax

4

## CONFERENCE PACKAGES



# CONFERENCE PACKAGES

## Full Day & Half Day Options



### Half Day Delegate Package - \$69 PP

Minimum 20 delegates

***Package Inclusions:***

Four hours of room hire (Either 8am-12pm or 1pm-5pm)  
Morning tea or Afternoon Tea  
Catered Lunch  
Wireless internet access throughout the duration of the event  
1 Flip Chart with pad  
1 Whiteboard with markers  
Notepads & Pens  
Jugs of Filtered Water  
Continuous Tea & Coffee



### Full Day Delegate Package - \$79 PP

***Package Inclusions:***

Room hire from 8am - 5pm  
Morning tea & Afternoon Tea  
Catered Lunch  
Wireless internet access throughout the event  
1 Flip Chart with pad  
1 Whiteboard with markers  
Notepads & Pens  
Jugs of Filtered Water  
Continuous Tea & Coffee

5

## Catering Options



# REFRESHMENT BREAKS

## Catering Options

Arrival Tea & Coffee - \$6.50 PP

(Included in Full Day Delegate Package)

Jacobs Douwe Egberts automated coffee & teas

Morning Tea & Afternoon Tea Breaks - \$15 PP

Each break includes a chef's selection of two items, offering a balanced mix of sweet and savoury treats. Made with seasonal ingredients, these light bites are designed to keep your group satisfied and refreshed throughout the day.



# COCKTAIL PACKAGES

## Food Options

### Canapé Options

***Chef Selection:***  
Canapés 6 for \$22 PP or 8 for \$25 PP

***Premium Canapé Selection:***  
\$8.00 per canapé

***Options:***  
BBQ Pulled Pork Sliders  
Fish & Chip Boats  
Thai Chicken Salad Bowl  
Fried Rice Bowl

### Food Stations

Minimum 40 guests  
\$25 PP

***Grazing Station:***  
Marinated Olives  
Vegetables  
Charcuterie Meats  
Dips  
Hard & soft cheeses  
Selection Of Breads & Crackers

***Taco Station:***  
Soft & Hard Taco's  
Pulled Pork  
Battered Flathead Fillets  
Selection Of Mexican Toppings  
Condiments

***Pizza Station:***  
Gourmet Meat Pizzas  
Gourmet Vego Pizzas  
Garlic Breads  
Fresh Salad & Dressings



# BUFFETS - \$88 PP

Minimum 20 Guests

## Classic Italian Buffet

Baked Bread rolls  
Butter & Margarine  
Garden Salad  
Pear rocket & parmesan Salad  
Classic Beef lasagna  
Chicken Breast w/ tomatoes capers and olives  
Spinach And ricotta Cannelloni  
Rosemary Roast Potatoes  
Steamed Vegetables  
Fruit Salad  
Cheese Platter  
Selection of Sweets

## Classic Roast Buffet

Baked Bread rolls  
Butter & Margarine  
Garden Salad  
Potato Salad  
Roast Pork Loin w/ apples sage & cashew  
Slow Roast Lamb Shoulder w/ mint Jus  
Creamy Mushroom pasta bake  
Maple baked root vegetables  
Steamed Greens  
Fruit Salad  
Cheese Platter  
Selection of sweets

## Premium Buffet

Garden Salad  
Potato Salad  
Rocket Salad

***Hot Main Dishes (Choose 3):***  
Chicken Breast & Mustard Sauce  
Roast Beef with Onion & Thyme Jus  
Grilled market Fish with Tomato, Lemon & Capers  
Vegetable Pasta Bake  
Slow Cooked lamb shoulder With Mint sauce  
Sesame Roast Salmon with Asian Greens  
Roast Pork with Apple, Sage and Cashews

***Sides:***  
Herb Roasted Root Vegetables  
Mixed steamed Vegetables

***Desserts:***  
Selection Of Petite Desserts  
Fruit salad  
Cheese Platter

# FUNCTION MEALS

Minimum 20 Guests

## Alternate Drop Menus

Function Menus are subject to change without notice due to seasonality, once you have booked your event the current menu will be sent to closer to the date of your event for you to select from. If selections are not suitable for guests with special dietary requirements a specific dish will be prepared, please be aware that a surcharge may apply if dietary requirements exceed 10% of the total guests dining this fee is to source produce and prepare these special dishes.

### *Options:*

2 Course Alternative — \$85.00 PP

3 Course Alternative — \$95.00 PP



# BEVERAGE PACKAGES

## Four Hour Packages

### Summit Package - \$55.00 PP

NV Bancroft Bridge Brut | Riverina NSW  
Bancroft Bridge Cabernet Merlot | Riverina NSW  
De Bortoli Vivo Sauvignon Blanc | Riverina NSW  
De Bortoli Vivo Moscato | Riverina NSW

James Boags Premium Light  
Tooheys Extra Dry  
XXXX Gold  
Heineken  
Corona

Monteith Crushed Apple & Pear Cider  
Selection of Soft drinks and Juice

### Fusion Package - \$62.00 PP

NV Bancroft Bridge Brut | Riverina NSW  
Bancroft Bridge Cabernet Merlot | Riverina NSW  
De Bortoli Vivo Sauvignon Blanc | Riverina NSW  
De Bortoli Vivo Moscato | Riverina NSW

James Boags Premium Light  
Toohey’s Extra Dry  
XXXX Gold  
Heineken  
Corona

Monteith Crushed Apple Cider

Absolute Vodka  
Bacardi  
Bundaberg Rum  
Gordons Gin  
Jim Beam  
J.Walker Red

Selection of Soft drinks and Juice

### Mystique Package - \$67.00 PP

NV Bancroft Bridge Brut | Riverina NSW  
d’Arenberg Footbolt Shiraz | Mclaren Vale SA  
De Bortoli Vivo Sauvignon Blanc | Riverina NSW  
De Bortoli Vivo Moscato | Riverina NSW

James Boags Premium Light  
Toohey’s Extra Dry  
XXXX Gold  
Heineken  
Corona  
James Squire ‘One Fifty Lashes’ Pale Ale

Monteith Crushed Apple Cider  
Monteith Crushed Pear Cider

Grey Goose Vodka  
Bacardi  
Bundaberg Rum Gordons Gin  
Jim Beam  
J.Walker Red  
Jack Daniels

Selection of Soft drinks and Juice

# TEAM BUILDING IDEAS



## Corporate & Group Xperiences

Get ready for the ride of a lifetime with Corporate & Group Xperiences. Designed to challenge, inspire, and energise, our team-building events boost confidence, initiative, and inner strength—all while having fun. Led by Ray Carson and his expert team, these unique experiences are fully organised, so all you need to do is show up. Contact your conference coordinator for more information.



## Banana Life

Looking for an energising team-building partner for your conference? Banana Life delivers engaging, high-energy activities designed to spark connection and collaboration. With options from interactive game shows to creative workshops, their experienced team makes it easy to make your event memorable.



## Tai Chi & Yoga

Begin your day of conferencing with a class of Tai Chi or Yoga before breakfast. Advance bookings are essential and dependent on the instructor's availability. Charges Apply.

The image shows the entrance to the Mercure Clear Mountain lodge. A large, covered walkway with a dark roof and wooden support pillars leads to the entrance. The pillars are topped with stone bases. A white car is parked under the walkway. Two people are walking towards the entrance. The building has a modern design with large windows and balconies. The sky is a mix of blue and orange, indicating dusk.

*Mercure Clear Mountain*  
*[clearmountainlodge.com.au](http://clearmountainlodge.com.au)*  
*[events@clearmountainlodge.com.au](mailto:events@clearmountainlodge.com.au)*  
*(07) 3298 5100*