

# PARADOX

SINGAPORE  
MERCHANT COURT



## PARADOX SINGAPORE

THE URBAN RESORT IN SINGAPORE,  
CHARACTERISED BY ITS LIVING  
TRADITIONS, EMBRACING INNOVATION,  
DELIVERING SERVICE FROM THE HEART



### *Location*

**A GREAT PLACE TO MEET,  
GROW BUSINESSES & RELAX**

Experience the duality of a cosmopolitan city and the serenity of a resort-style oasis. Situated next to Clarke Quay MRT station, Paradox Singapore Merchant Court is a stone's throw away from the hip and bustling entertainment and dining district of Clarke Quay and Boat Quay as well as the financial hub of Raffles Place.

Find your source of inspiration from the picturesque view of the Singapore River. Sample diverse flavours at the famed Ellenborough Market Café and stay fit during your travels with our 24-hour fitness centre, a free-form swimming pool and a wellness spa. Whether your stay is for business or leisure, enjoy the comfort, relaxation, and genuine service in the heart of Singapore.



### *Guest Rooms*

**URBAN ELEGANCE & IMPRESSIVE VIEWS**

Feel right at home in one of our 476 chic guest rooms and suites. Bask in the natural light and enjoy the modern décor, not to forget the calming view of the Singapore River from many of the rooms. You can also relax in one of our Executive Rooms or Suites, which provide exclusive access to the Executive Lounge for complimentary refreshments served throughout the day and evening.

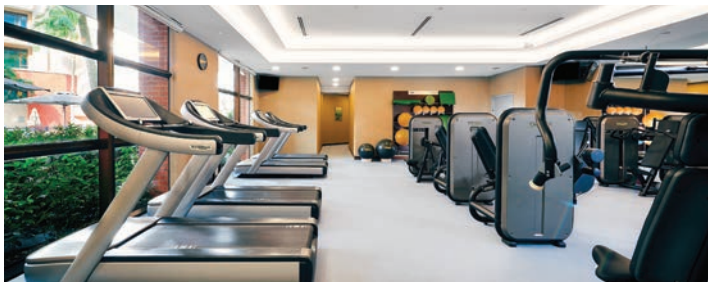




## *Restaurants & Bar*

**CONTEMPORARY DINING  
IN THE HEART OF THE CITY**

Let our renowned chefs at Ellenborough Market Café delight you with their delicious concoctions featuring popular Peranakan (or Straits Chinese), local and international specialties. Set amidst a lush landscape and next to our swimming pool, the Blue Potato offers a delicious Western à la carte menu. Looking to unwind in style? Enjoy themed afternoon teas or Asian-inspired signature cocktails and tapas at the classy Crossroads Bar. Feel the cool river breeze and enjoy stunning sunsets over a meal at the Alfresco.



## *Spa & Sport*

**REJUVENATE YOUR BODY, MIND & SOUL**

Experience the benefits of holistic wellness and beauty offerings from our Spa and Fitness Centre. Relax and sink into pure bliss with our spa treatments which use various essential oils, made to work in tandem with the well-equipped and modern sports training facilities. Our 24-hour two-level fitness centre, resort-style pool with water slides, and an outdoor Jacuzzi will leave you feeling refreshed and re-energised.

## *Conference, Wedding & Events*

**PERFECT SETTING & PROFESSIONAL SUPPORT**

From private board meetings to lavish celebrations, we offer the perfect setting for your event. Facilities include seven meeting rooms and a 680 square metre column-free ballroom with a ceiling height of 6 meters, which comes with an adjoining foyer perfect for a private reception. Whether for an international conference or an exclusive and more intimate meeting, our facilities, service and team are guaranteed to leave a lasting impression. With an elegant ballroom, exclusive foyer and gazebo, and fine cuisine, we can assure you that every wedding will be a memorable and unforgettable one.

## *Facilities & Services*

**ENSURING YOUR COMFORT & CONVENIENCE THROUGHOUT**

- Non-smoking hotel in the centre of the entertainment & dining hotspots of Clarke Quay and Boat Quay
- 476 beautiful and contemporary guest rooms and suites
- Conveniently situated next to Clarke Quay MRT station
- Short walk to the business district and many tourist attractions
- 29-minute drive from the airport
- Four in-house restaurants and bar
- Conference, meeting and event space for up to 500 guests (banquet seating)
- High speed Internet access
- Spa and Fitness Centre
- Free-form swimming pool and outdoor Jacuzzi
- Gazebo garden area for cocktail receptions and solemnisation
- Concierge service
- In-room dining
- Sightseeing and car rental arrangement services
- Laundry and dry-cleaning
- 24-hour self-service launderette
- Turndown service available on request
- Baby-sitting service available on request
- Luggage storage
- 161 parking lots

# CAPACITY CHART

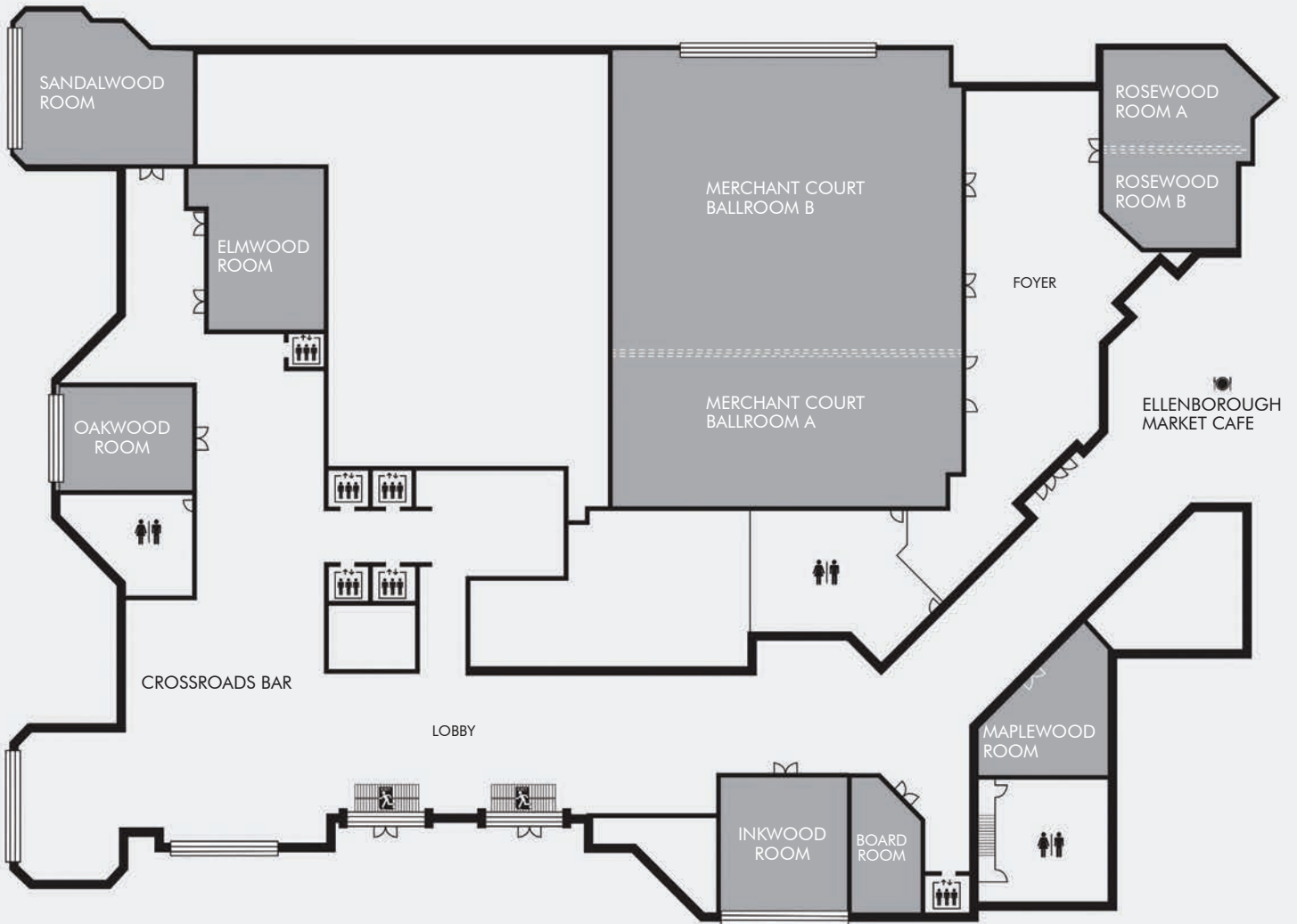
MEETING ROOMS	AREA (M <sup>2</sup> )	CEILING HEIGHT	COCKTAIL	CLASS ROOM	BOARD ROOM	THEATRE	U SHAPE	HOLLOW SQUARE	BANQUET & DANCEFLOOR	BANQUET	LEGEND
---------------	------------------------	----------------	----------	------------	------------	---------	---------	---------------	----------------------	---------	--------

## GROUND LEVEL

Ballroom A & B	680	6	600	324	-	580	100	130	460	500	
Ballroom A	243	6	180	96	-	156	45	66	80	160	
Ballroom B	437	6	300	162	-	250	50	90	180	260	
Rosewood A & B	98	3.6	60	45	24	65	30	36	-	60	
Rosewood A	49	3.6	20	12	12	24	12	18	-	20	
Rosewood B	49	3.6	20	12	12	24	12	18	-	20	
Sandalwood	96	3.6	50	30	24	70	21	23	-	50	
Elmwood	75	3.6	50	45	21	60	24	30	-	40	
Inkwood	72	3.5	40	27	12	60	21	30	-	40	
Oakwood	60	3	30	18	12	36	15	24	-	20	
Maplewood	59	4	40	21	16	30	15	18	-	30	
Boardroom	28	3.5	-	-	9	-	-	-	-	-	

	Meeting Room or Ballroom
	Restrooms
	Elevator
	Food & Beverage Outlet
	Emergency Exit
	Stairway
	Window
	Moveable Partition

## GROUND LEVEL



# PARADOX

SINGAPORE

MERCHANT COURT

20 Merchant Road | Singapore 058281

T: +65 6337 2288 | F: +65 6334 0606 | [paradoxhotels.com/singapore](http://paradoxhotels.com/singapore)



@ParadoxMerchantCourt