


Eastin Grand Hotel Sathorn Bangkok



EASTIN
GRAND HOTEL
SATHORN BANGKOK





Eastin Grand Hotel Sathorn Bangkok is ideally situated in the Sathorn business district and is just minutes from the world-famous Chao Phraya River.

A skybridge linked directly to Surasak BTS station makes it is the only hotel in Bangkok with its own direct access to the Skytrain, literally bringing the city to your doorstep.

Opening Date :
4 May 2012

Owner :
EGS Assests Co., Ltd.

Hotel Management :
Absolute Hotel Services Co., Ltd.

General Manager:
Chuleekorn Mungsunti



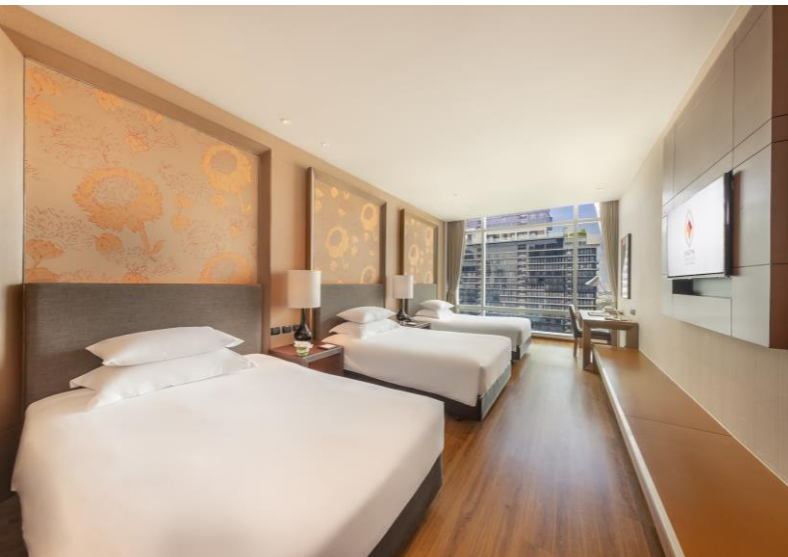


Superior Rooms

Comfortable and modern rooms for a luxurious stay in the city with outstanding views of either the Chao Phraya River or Bangkok skyline. Double or twin-bedded.

Superior Sky Rooms

Located on higher floors for outstanding views of either the Chao Phraya River or Bangkok skyline. Double or twin-bedded.



Superior Sky Triple

Located on the upper floors to offer unrivalled views of Bangkok, our Superior Sky Triple Rooms provide a thrilling elevated experience.

Superior Sky Mahanakhon

Positioned on the higher floors and offering guests supreme views of the Bangkok cityscape, our Superior Sky Mahanakhon Rooms provide an unforgettable experience along with remarkable vistas of the unique Mahanakhon building.





Executive Superior Sky with Lounge access

Located on the highest floors, our Executive Superior Sky Rooms offer fabulous views over the expressway, which is especially enchanting at night. Guests staying in this room enjoy exclusive access to the Executive Lounge.

Executive Superior Sky Mahanakhon with Lounge access

Nestled on the executive floors of the hotel, our Executive Superior Sky Mahanakhon Rooms offer a luxurious ambiance, complemented by exclusive access to the Executive Lounge, as well as sensational views of Bangkok's iconic Mahanakhon building.



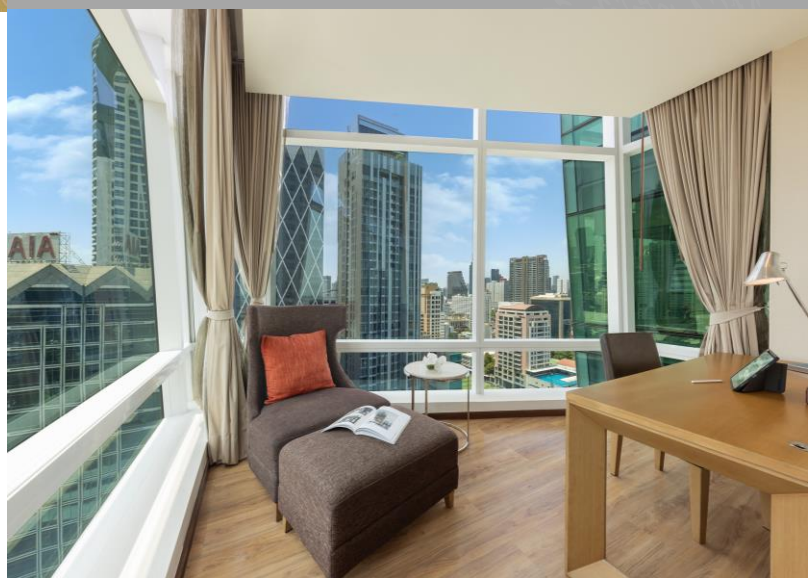
Executive Deluxe with Lounge access

Perfectly positioned on the corner of each floor, our Executive Deluxe Rooms offer complete privacy and outstanding views of Bangkok's renowned Mahanakhon building.

Guests staying in an Executive Deluxe Room are entitled to full Executive Lounge privileges.

Grand Executive Deluxe with Lounge access

Superbly located on the corner of each floor, our Grand Executive Deluxe Rooms offer complete privacy with impressive views of Bangkok's sensational skyline all around you, and full access to Executive Lounge privileges,. These rooms feature a relaxing corner with a daybed and working space, perfect for unwinding or catching up on work.





Premium Executive Deluxe with Lounge access

Our Premium Executive Deluxe Rooms, perfectly situated on the corner of the higher floors, offer unequalled privacy and spaciousness, as well as captivating vistas of the Chao Phraya River. Each room features a relaxing corner with a daybed, working space and Executive Lounge access and privileges.

Executive Suite with Lounge Access

Executive Suites, strategically positioned on the corner of each floor to offer the utmost privacy and panoramic views of Bangkok's celebrated Mahanakhon building. This spacious retreat features a separate living room and bedroom

This room provides guests with Executive Lounge access and privileges.





Facilities & Services

- Fitness centre & swimming pool
- Meeting facilities
- Hi-speed Wi-Fi internet access throughout the hotel
- Daily housekeeping service
- Laundry service
- Executive Lounge
- Transportation service



Unique Services

- Extended breakfast served from 06.00 - 11.00 hrs.
- Ready and Welcome, Guaranteed-let us know your arrival time 48 hours in advance of arrival and we guarantee your room will be ready by our check-in time (14.00 hrs.) otherwise the 1st night is free
- Children under 16 years old will not be charged an extra person fee



Executive Lounge

Guests who choose to stay in rooms that include Executive Lounge access are also given exclusive Executive Lounge privileges. These privileges include complimentary breakfast served in the lounge, access to complimentary snacks and drinks throughout the day and a daily open bar cocktail reception. A dedicated Executive Lounge concierge service is also available to take care of your every need.



Restaurants

THE GLASS HOUSE

Your Value Buffet Venue

Our all-day dining restaurant is located on the 5th floor, featuring a show kitchen in a modern international setting.

The restaurant offers Asian and Western-inspired buffet specialties as well as an a la carte menu.

Opening Hours

A La Carte: 06.00 - 23.00 hrs.

Breakfast Buffet and A La Carte: 06.00 - 11.30 hrs.

Lunch Buffet 12.00 - 14.30 hrs.

Dinner Buffet: 18.00 - 22.00 hrs.

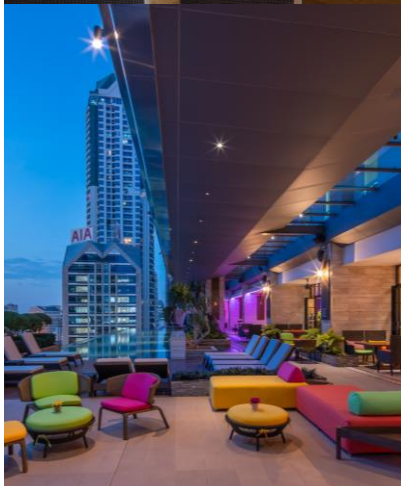


Antito

Zesty Resto-Bar Serving Creative Italian Cuisine

Located on the 14th floor, Antito is an open living room over the city. Michelin star chef Amerigo Tito Sesti's authentic yet creative Italian cuisine features a variety of antipasti as well as seasonal dishes influenced by local and artisanal produce. Vibrant pop art vibes and a comfy space that incites diners to fall in love with an Italian "aperitivo" lifestyle, where a drink leads to dinner and a dinner becomes a night out.

Opening Hours: 12:00 - 23.30 hrs.



Restaurants

CHEF MAN

Enjoy the Original Taste of Chinese Cuisine

Chef Man showcases an extensive array of authentic Cantonese cuisine, provincial specialties, creative dim sum menu and premium tea collection in a relaxed yet elegant atmosphere.

A selection of savoury dishes emphasize exquisite ingredients, fresh seafood and traditional flavours. Located on the 3rd floor.

Opening Hours

Lunch: 11.00 - 15.00 hrs.

Dinner: 18.00 - 22.00 hrs.



SWIZZLES

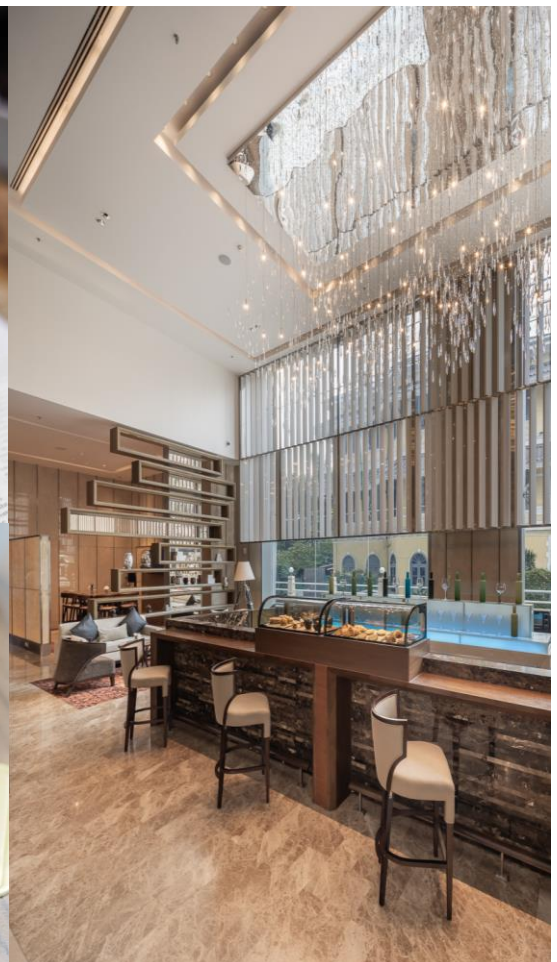
The Place. The Time.

The Mood.

located on the ground floor, Swizzles offers a variety of drinks and snacks as well as “to go” beverages for guests on the run. It’s the perfect place to rest, relax and unwind at any time of day.

Opening Hours

9.00-20.30 hrs.



Weddings

Let our team of professionals at Eastin Grand Hotel Sathorn Bangkok create a uniquely memorable and personal wedding for you and your guests. Whether you dream of a grand gala affair or an intimate gathering, we invite you to explore all the possibilities for your perfect day

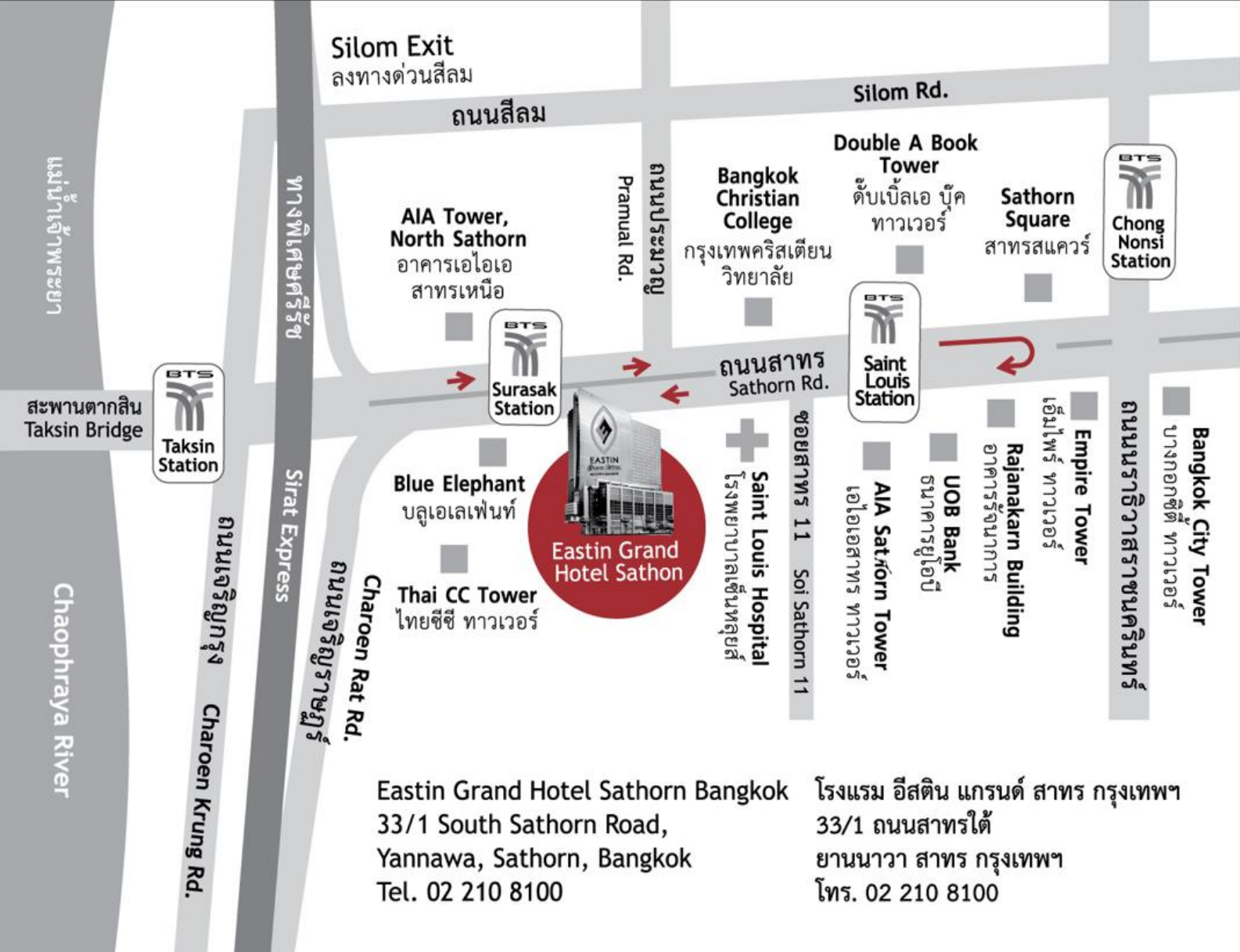


Conferences & Events

Over 1,800 square meters of event and conference accommodation spread over three entire floors, with 7 meeting rooms, 2 boardrooms and one ballroom that can be divided into 3 small function rooms, with all areas having the benefit of natural light. Four of the meeting rooms are located on the 33rd floor offering spectacular views of the Chao Phraya River and city skyline. All are fully equipped with cutting-edge audio visual and other equipment for perfect events. Our experienced team can plan and organize your event with the right choice of menu to suit your individual requirements.



Venue	Area (sqm.)	Dimensions (m.) W x L x H
Surasak Ballroom	612 sqm.	14 x 44.5 x 5.2 m
Foyer	290 sqm.	N/A
Surasak I	416 sqm.	14 x 30.5 x 5.2 m
Surasak II	98 sqm.	14 x 7 x 5.2 m
Surasak I+II	514 sqm.	14 x 37.5 x 5.2 m
Surasak III	98 sqm.	14 x 7 x 5.2 m
Surasak II+III	196 sqm.	14 x 14 x 5.2 m
Terrace	40 sqm.	196 m



Eastin Grand Hotel Sathorn Bangkok

33/1 South Sathorn Road,
Yannawa, Sathorn,
Bangkok 10120 Thailand

Tel: +66 2 210 8100

Fax: +66 2 210 8399

Email: rsvn@eastingrandsathorn.com



EastinGrandSathorn

