

hot dates, hot rates

Looking for the perfect downtown Vancouver location for your next group stay? Book during our exclusive Hot Dates and unlock unbeatable Hot Rates at the Coast Coal Harbour Vancouver Hotel by APA. Just steps from the waterfront, top restaurants, and the Vancouver Convention Centre, our modern rooms, warm hospitality, and signature Japanese-inspired amenities offer comfort and convenience for any group.

Limited availability - secure your dates today and save!

HOT DATES:

July 1–22: \$399

August 1–31: \$399

September 1–20: \$349

September 21–30: \$349

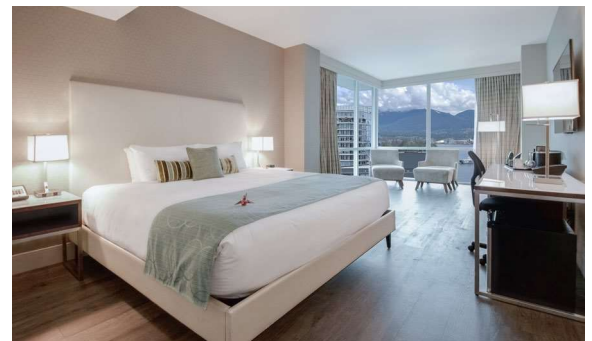
October 15–31: \$249

November 1–14: \$229

Terms & conditions

- * Above rates are eligible for 15% commission when applicable.
- * Book by October 31, 2025 and stay by November 14, 2025.
- * Groups must be a minimum 10 rooms on one night to qualify.
- * Rates are subject to availability. Room rates do not include applicable taxes and fees.
- * Applicable for new bookings only.

[Learn more: Meeting Planner Rewards Points Program](#)



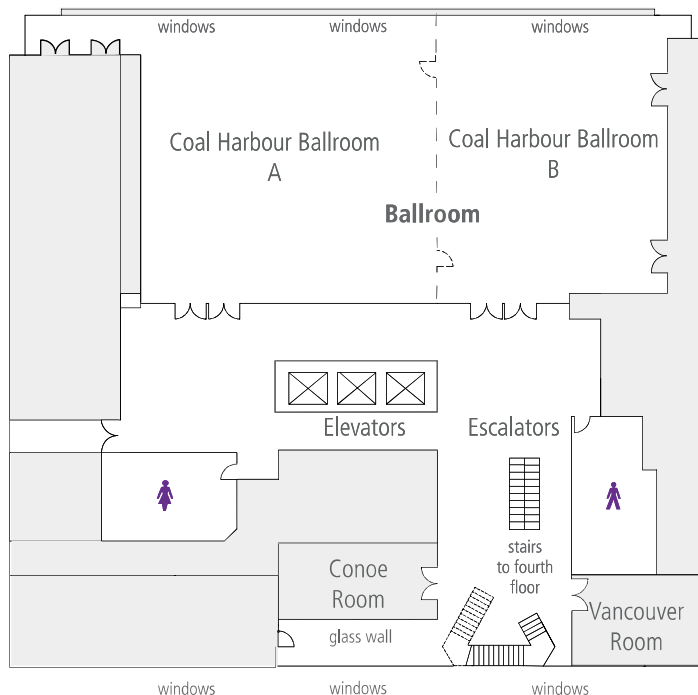
coast coal harbour vancouver hotel by apa sales & catering
ccc.sales@coasthotels.com t. 604.697.0202

Make Your Next Event Extra Rewarding!

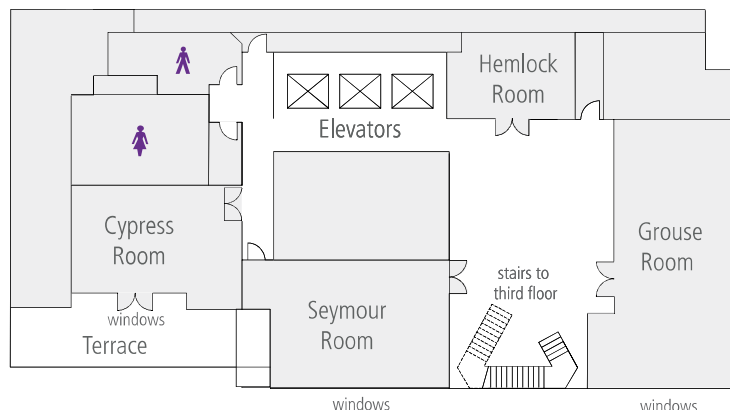
coast rewards™ **AEROPLAN**  **Alaska Mileage Plan** 

the perfect venue for your meetings, events and celebrations

Third Floor - 3F



Fourth Floor - 4F



Room Specifications

Meeting Room	Theatre	Classroom 2 per table	Classroom 3 per table	Boardroom	Rounds of 6	Rounds of 8	Reception	U-Shape	Hollow Sq.	Ceiling Height
COAL HARBOUR BALLROOM	500	224	336	–	216	288	500	–	–	20'
COAL HARBOUR A	300	128	192	–	120	160	300	60	70	20'
COAL HARBOUR B	200	96	144	–	96	128	200	50	60	20'
CONOE	–	–	–	16	–	–	–	–	–	9'
VANCOUVER	25	12	15	14	12	16	15	–	–	10'
GROUSE	80	32	48	38	42	56	70	34	32	9'
SEYMOUR	40	24	36	20	24	32	50	20	22	8'6"
CYPRESS	24	14	21	16	18	16	30	16	18	9'
HEMLOCK	12	8	12	8	6	8	–	–	–	8'10"

Please note the capacity is the maximum for each space and does not account for AV set up, dance floors, DJ, photo booths, bars, and buffets. Wider aisles are required for wheelchair, staging, and ramp access.