



The Sutton Place Hotel

VANCOUVER

Indulge yourself in traditional luxury and timeless elegance. Experience our commitment to providing exceptional service to our guests.



Location

The Sutton Place Hotel Vancouver is ideally located in the heart of downtown Vancouver's most popular districts. We are steps away from the chic boutiques of Robson Street, and the city's best attractions and restaurants.



Accommodations

The hotel features 350 luxurious guest rooms, 46 one-bedroom Executive and Grand Suites, and a Presidential Suite. A separate tower, La Grande Résidence, features 164 furnished one and two-bedroom residences – ideal for long-term stays.



Food & Beverage

Boulevard Kitchen & Oyster Bar at The Sutton Place Hotel provides a unique showcase for the culinary vision of Executive Chef Alex Chen. With an innovative approach that blends a respect for the past with a celebration of the present, Chen's seafood-focused menu is grounded in classical technique and training, while artfully infusing casual West Coast flair and creative hints of his international influences.



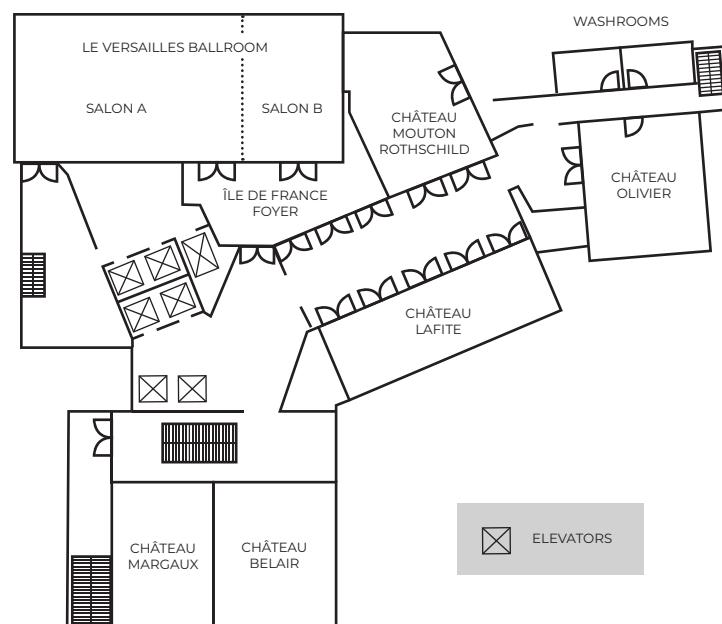
For information or to book your meeting, please contact:

Sales & Catering Office

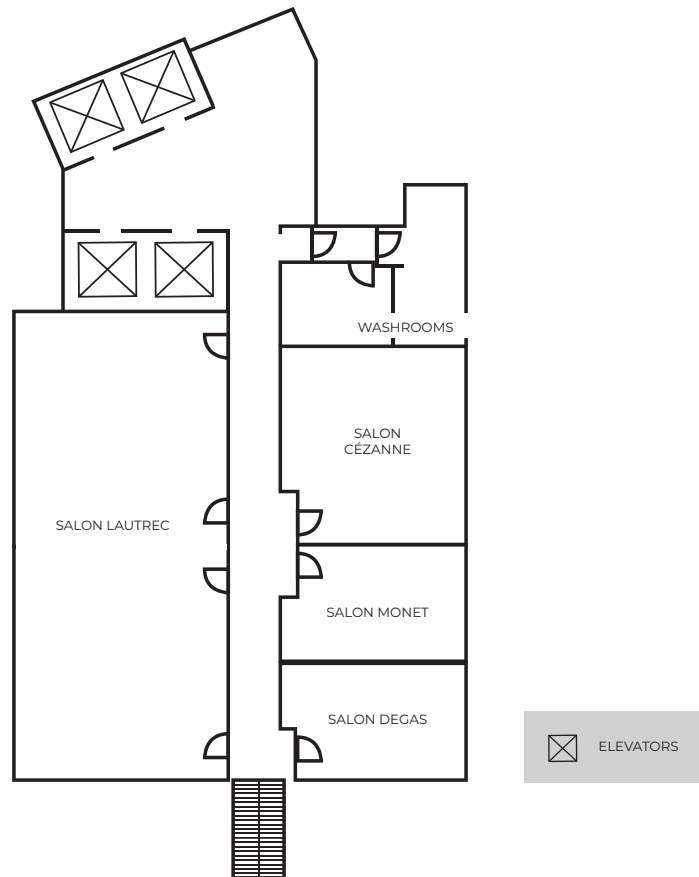
Call: 604-682-5511

Email: cateringdir_van@suttonplace.com

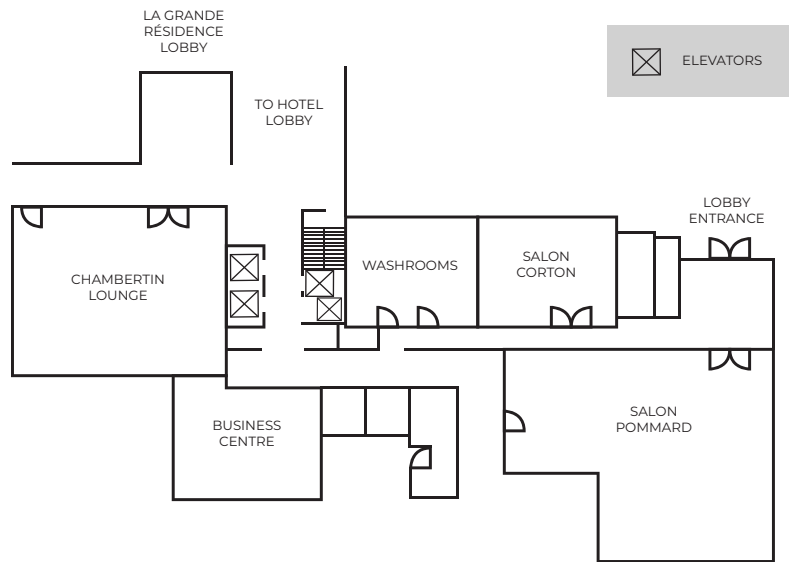
	Le Versailles Ballroom + Château Mouton Rothschild	Le Versailles Ballroom (A & B)	Le Versailles Salon A	Le Versailles Salon B	Château Mouton Rothschild	Château Lafite	Château Belair	Château Margaux	Château Olivier
Natural Light	☀	☀	☀	☀	-	☀	☀	-	☀
Square Footage	4,025	3,150	2,310	840	875	918	910	770	750
Dimension	75' x 42' + 35' x 25'	75' x 42'	55' x 42'	20' x 42'	35' x 25'	54' x 17'	35' x 26'	35' x 22'	30' x 25'
Ceiling Height	12'	12'	12'	12'	12'	12'	10'	10'	10'
Rounds of 10	300	280	200	80	60	50	50	40	50
Half Rounds of 8	204	192	128	48	40	40	40	32	32
Half Rounds of 6	156	144	96	36	30	30	30	24	24
Boardroom	-	70	48	34	28	40	24	22	22
Classroom (2 per 6ft table)	132	132	74	36	30	32	28	24	24
Classroom (3 per 6ft table)	204	204	111	54	45	48	42	36	36
Theatre	330	300	220	80	70	80	80	50	60
Hollow Square	-	90	90	36	26	-	30	24	30
U-Shape	-	80	66	36	24	-	24	22	22
Reception	370	300	220	80	70	70	80	50	50



	Salon Lautrec	Salon Cézanne	Salon Monet	Salon Degas
Natural Light	☀	☀	☀	☀
Square Footage	1150	462	273	273
Dimension	50' x 23'	22' x 21'	21' x 13'	21' x 13'
Ceiling Height	9'	9'	9'	9'
Rounds of 10	80	30	10	-
Half Rounds of 8	64	16	8	-
Half Rounds of 6	48	12	6	-
Boardroom	42	16	12	10
Classroom (2 per 6ft table)	28	12	6	-
Classroom (3 per 6ft table)	42	18	9	-
Theatre	100	30	15	-
Hollow Square	48	18	-	-
U-Shape	42	15	-	-
Reception	100	30	10	-



	Chambertin lounge
Natural Light	-
Square Footage	1,312
Dimension	32'x41'
Ceiling Height	10'
Rounds of 10	50
Half Rounds of 8	40
Half Rounds of 6	30
Boardroom	20
Classroom (2 per 6ft table)	20
Classroom (3 per 6ft table)	30
Theatre	40
Hollow Square	22
U-Shape	20
Reception	100



Our 12 individually designed meeting rooms offer comfortable surroundings, the latest in technological equipment, and enough space to accommodate groups ranging in size from 12 – 370 people. A dedicated on-site audio visual team and skilled catering and banquet teams will work with you to enhance your event, providing impeccable service and attention to detail.

First-class amenities, and elegant guest rooms await you at The Sutton Place Hotel Vancouver.

So many reasons to stay:

- Indoor Pool
- Vida Spa
- Sutton Wine Merchant
- Complimentary Wi-Fi
- Overnight Parking
- Pet-Friendly Rooms
- Fitness Centre

Choose from a range of guest room options including king bed suites, 2 queens, or two bedroom options in our La Grande Résidence tower.

