

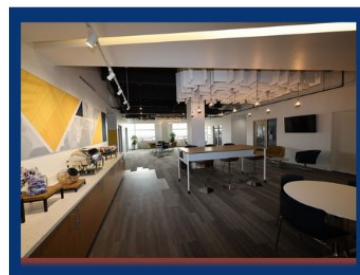
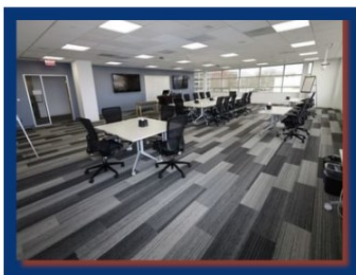
# STATE STREET CAMPUS

7000+ square foot facility is designed for corporate trainings, retreats, and full service dining, with two dedicated meeting rooms, a multipurpose room, and 12 breakout rooms. We have everything you need to host a seamless and productive conference.

## MEETINGS & CONFERENCES

1000 Oakbrook Drive – Suite 300  
Ann Arbor MI 48104

Contact us at [ross-elcc@umich.edu](mailto:ross-elcc@umich.edu)

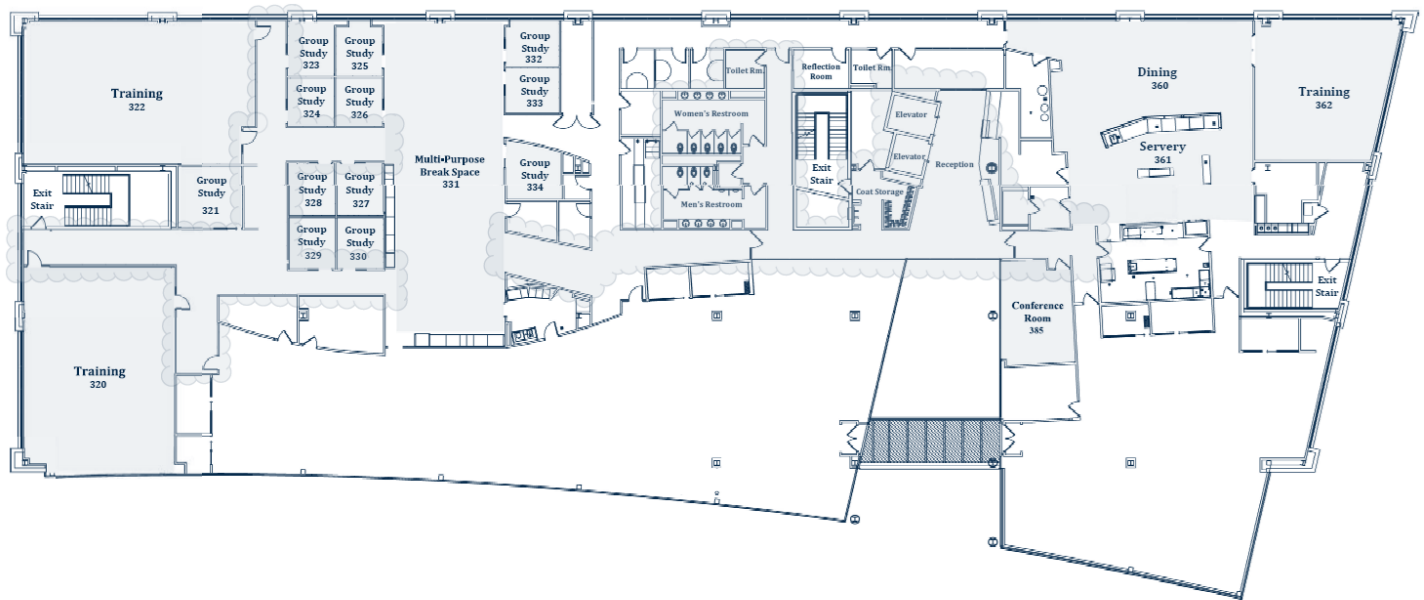


- Daily Meeting Rooms | up to 75 Guests
- Day Meeting Package Available
- Dining Room Available for Breakfast, Lunch, Dinner or Receptions
- Continuous Refreshment Service
- Audio Visual Equipment
- Office Supplies for Your General Session Meeting Room
- Dedicated Conference Planning Manager
- Complimentary Parking & Wireless Internet

*All Prices Subject To Applicable Administration Fees & State Taxes*

# STATE STREET CAMPUS

## ROOM DIAGRAM & CAPACITIES



MEETING ROOM	Area (sq ft)	Dimensions	Theater	Classroom	Conference	U-Shape	Reception	Dining
320	1465	45'x 33'	-	36-48	32	24	-	-
322	1528	50'x 31'	-	48	36	24	-	-
362	868	31'x 30'	40	32	24	18	44	40
331	1840	70'x 26'	18	-	-	-	60-75	-
360	1045	54'x 21'	40	-	-	-	50-60	48
385	338	23'x 16'	-	-	12	-	-	-
321,323-330,332-334	120	12'x 10'	-	-	6	-	-	-