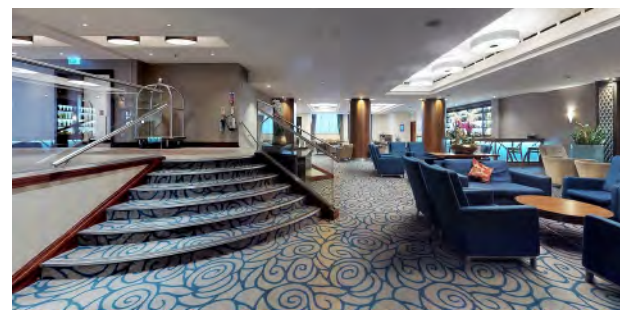


WORK, REST AND STAY



Holiday Inn London-Kensington High Street is situated in the Royal Borough of Kensington & Chelsea in west London, located in a quiet spot of the high street Kensington. Within walking distance of London Olympia, Kensington Palace, Hyde Park, Royal Albert Hall and museums.

HOTEL AMENITIES

- 706 bedrooms – rooms and suites
- 13 meeting rooms with capacity for up to 450 delegates
- Free Wi Fi throughout the hotel
- Lounge and Boulevard Restaurant
- On site Open Lobby Coffee Shop serving Starbucks
- Health Club and Spa with an 18-metre swimming pool, a fully equipped gymnasium and spa
- Private garden - Kensington Court W8

HOTEL LOCATION

- Outside of the London congestion zone
- Easy access to central London and London Heathrow airport through travel connections
- High Street Kensington Tube Line is a 2-minute walk access to Circle/District Lines
- Access to A4/M4/M25



A comfortable stay



Spaces to connect



Onsite bar and restaurant



Kensington Healthclub and Spa
With pool, gym and spa

ROOM TO WORK, SPACE TO RELAX



Holiday Inn London Kensington High Street provides
706 modern and proportioned guestrooms.
Smartly designed with an emphasis on comfort.
Mix of Standard, Premium & Suites.

Our Premium and Suites enjoy luxury touches,
bathrobes, slippers.

All bedrooms have a mini fridge, coffee making facilities and
Complimentary Wi-Fi allows you to stay in touch.

Holiday Inn Kensington High St, Wrights Ln, London W8 5SP
T: +44 (0) 20 7368 4023 E: conference@hilondonkensington.com
www.hilondonkensington.com

EAT & DRINK



Start your day with a full English breakfast buffet served in our Boulevard restaurant and enjoy a wide selection of hot and cold dishes.

Our Lounge Bar is the perfect place to do business over a morning coffee.

Offering a contemporary and relaxed space, featuring classics from around the world for a truly cosmopolitan feel.



OUR OPEN LOBBY COFFEE SHOP

Which serves Starbucks coffee so start your day with a delicious cappuccino or a shot of espresso to keep you going when on the move. We offer a range of hot and cold drinks with a selection of sandwiches, wraps and cakes and pastries which are sold daily. Access can be gained directly from our lobby.

KENSINGTON COURT GARDENS W8



Kensington Court Gardens W8 is located steps from Kensington's popular and stylish High Street, within walking distance of Kensington Palace & Gardens, Hyde Park, Royal Albert Hall, Victoria & Albert Museum, Natural History Museum & Science Museum.

Our garden offers a selection of dishes, ranging from classic European Cuisine which can be accompanied with a cocktail made from Fatty's Organic Spirits, or guests can enjoy a traditional Afternoon Tea menu.

The tranquil garden located in the heart of Kensington is the perfect place to enjoy that summer cocktail, relax and unwind, and dream your day away.

This wonderful location is also available for private hire.



Holiday Inn Kensington High St, Wrights Ln, London W8 5SP
T: +44 (0) 20 7368 4023 E: conference@hilondonkensington.com
www.hilondonkensington.com

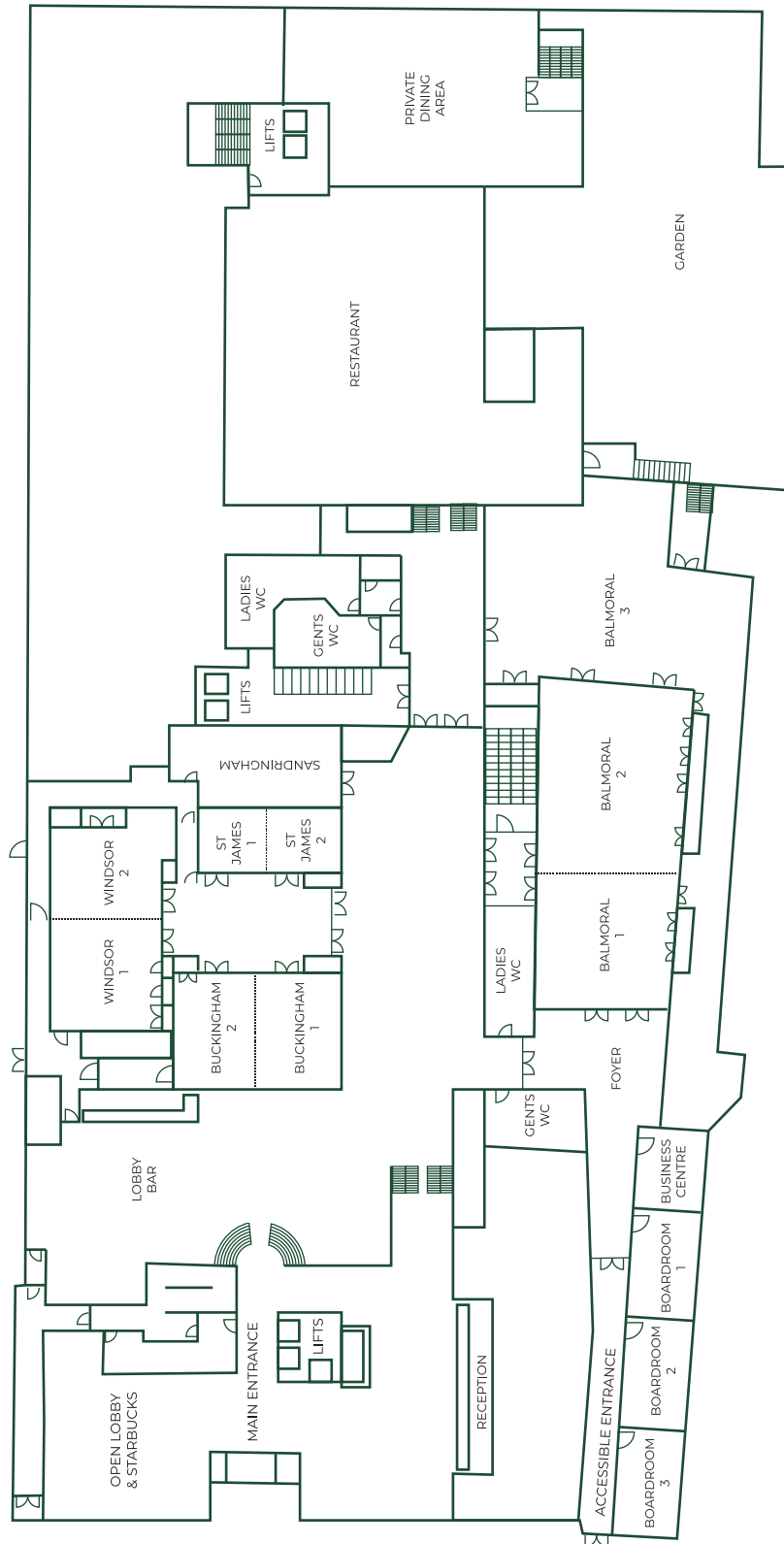
MEETING SPACES



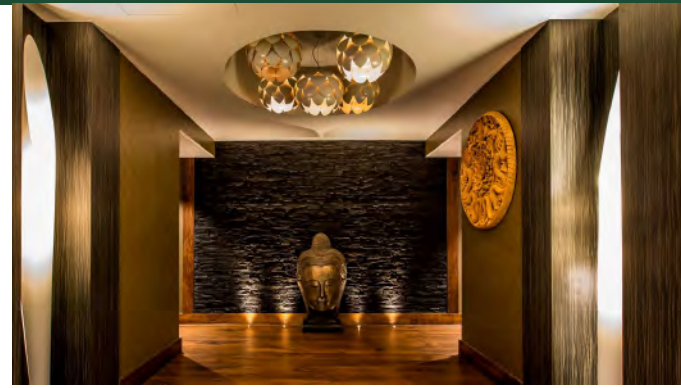
With 13 well-appointed versatile and stylish function rooms, including three executive boardrooms to choose from. Whether you are planning a gala dinner, conference, product launch or training business, we have the facilities to make every event a success. With conference and event space to accommodate up to 450 people. All our spaces can be found on the ground floor, providing easy access to your event.

ROOM	SPACE IN SQM	DIMENSIONS W x L x H (m)	THEATRE	CLASSROOM	BOARD ROOM	U SHAPE	CABARET	ROUNDS	ROUNDS WITH DANCE FLOOR	COCKTAIL
Buckingham (1&2)	86	7.8 x 11 x 2.8	90	50	30	30	48	72	48	90
Buckingham 1	46	7.8 x 5.85 x 2.8	35	20	18	18	24	36	-	40
Buckingham 2	40	7.8 x 5.1 x 2.8	30	18	16	18	24	30	-	30
Windsor (1&2)	95	7.3 x 12.95 x 2.8	100	50	35	32	63	72	60	110
Windsor 1	52	7.3 x 7.05 x 2.8	48	30	18	18	27	48	-	60
Windsor 2	43	7.3 x 5.9 x 2.8	35	24	14	16	21	36	-	40
Sandringham	42	5.1 x 8.3 x 2.7	50	30	20	20	24	30	-	40
St James (1&2)	35	4.2 x 8.5 x 2.8	30	15	20	-	-	20	-	20
St James 1	15	3.95 x 7.31 x 2.8	10	8	6	-	-	-	-	-
St James 2	20	4.2 x 4.66 x 2.8	10	8	6	-	-	-	-	-
Balmoral (1,2&3)	368	9.3 x 32.3 x 2.8	300	130	100	110	180	280	228	450
Balmoral (1&2)	198	9.3 x 21.3 x 3.1	230	96	56	66	126	160	132	250
Balmoral 1	80	9.3 x 8.55 x 3.1	60	36	28	24	45	60	40	100
Balmoral 2	114	9.3 x 12.24 x 3.1	110	54	30	36	63	84	72	150
Balmoral 3	170	11 x 16 x 2.8	100	60	40	34	60	96	-	200
Boardroom 1	30	4.2 x 7 x 2.8	-	-	12	-	-	-	-	-
Boardroom 2	30	4.2 x 7 x 2.8	-	-	12	-	-	-	-	-
Boardroom 3	30	4.2 x 7 x 2.8	25	18	16	16	16	12	-	-

MEETING SPACES



KENSINGTON HEALTH CLUB & SPA



Escape the pressures of your busy schedule and step into your very own moment of tranquillity, whether you're unwinding in the Spa or working out in the Health Club, you are going to leave feeling refreshed.

We have an exciting range of treatments, using Elemis products, available for you to choose from and our friendly, knowledgeable team are on hand to ensure that you have everything that you need.

- 18 metre Indoor heated swimming pool
 - Fully equipped gymnasium
 - Sauna
 - Steam room
 - Hot tub
 - Group Swim and Fitness classes
 - Treatment rooms
 - Nail bar
 - Lockers & Towels.



GET IN TOUCH

Address: Wrights Ln, London W8 5SP

Telephone: +44 (0) 20 7368 4023

General enquiries: info@hilondonkensington.com

Reservations: res@hilondonkensington.com

Conference & events: conference@hilondonkensington.com

www.hilondonkensington.com