



AMORA  
RIVERWALK MELBOURNE

# Hotel Fact Sheet

649 BRIDGE ROAD, RICHMOND. VIC. 3121  
t: +61 3 9246 1200  
e: [res@amora.melbourne](mailto:res@amora.melbourne)  
w: [amorahotels.com/melbourne](http://amorahotels.com/melbourne)



## ACCOMMODATION

With 111 spacious Guest Rooms, Suites and 2 Bedroom Townhouse Apartments. be it business travel or a leisure, we have everything you need to ensure your stay is perfect.

Check-in is 2pm, while check-out time is 11am.

### Room Type

	Number of Rooms
• Courtyard Queen Room with Balcony	41
• Courtyard Special Amenities Room	2 (1 Queen & 1 King)
• Courtyard Twin Room with Balcony	7 (King Zip)
• Courtyard King Room with Balcony	10 (King Zip)
• Riverview Spa Suite	12
• King Room with Spa Bath & Balcony*	19 (King Zip)
• One Bedroom Loft Apartment with Balcony*	19
*These 2 rooms can interconnect to create the 2 bedroom townhouse apartment*	
• Two Bedroom Apartment with Balcony	19
• Two Bedroom Riverview Apartment with Balcony	1

## GUEST ROOM FACILITIES

- Tea & Coffee Making Facilities
- Broadband Internet
- Telephones with mobile charger
- Hair Dryers
- Iron & Ironing Boards
- LCD TV with Chromecast
- Most rooms have balconies or opening windows
- Pillow Menu

## HOTEL FACILITIES & SERVICES

- Guest Laundry & Valet Service
- 24 Hour Reception
- Room Service
- High Speed Internet
- Car Charging Stations available
- Undercover Security Parking (charges apply)
- Work Space area
- Complimentary Mountain Bikes
- Jogging & Cycling Tracks nearby
- Gymnasium

## FOOD & BEVERAGE FACILITIES

**The Reserve Restaurant - Open 6.30am - 9pm Monday - Saturday, Sunday menu available from The Hotel Bar**

Serving contemporary Australian cuisine, the restaurant offers patrons the choice of indoor or al fresco dining in the courtyard. With an excellent a la carte menu offering breakfast 7 days a week, lunch and dinner Monday to Saturday.

**The Hotel Bar Open 6.30am - late (last food orders 9pm)**

Adjacent to the courtyard, The Hotel Bar is the perfect spot to enjoy a light snack, refreshing ale and mingle with locals. Bar Bites and 'On the Run' menu available daily.

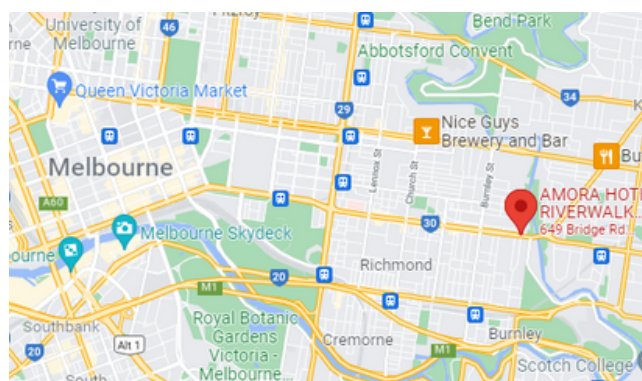
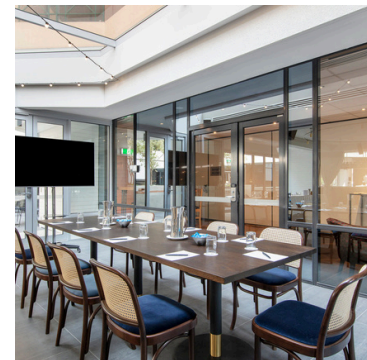
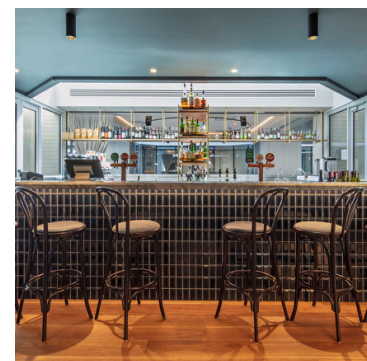
### Conference & Events

Amora Hotel Riverwalk Melbourne has 15 purpose built function rooms and can cater for up to 250 people using a range of configurations. Our unique Event Pavilion and 4 Private Dining spaces are available for lunches, dinners and cocktail events and can be transformed into the perfect setting for a wedding or trade display.

## LOCATION & GETTING HERE

The Amora Hotel Riverwalk Melbourne is ideally positioned hotel is just 3.5 kilometres from the vibrant Melbourne CBD, on the banks of the Yarra River in Richmond. Nearby attractions include, MCG, Melbourne Park, AAMI Stadium, shopping/dining precincts - Bridge Road, Victoria Gardens, Victoria Street and Church\Chapel Streets.

The Amora Hotel Riverwalk Melbourne is approximately 35 minutes drive from Melbourne Airport via the M1 freeway. By Tram to\from the City - Route 48 or 75 Tram line runs along Bridge Road. The hotel stop is #22.



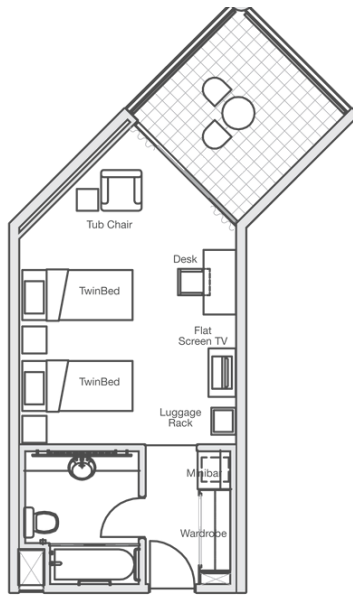
649 BRIDGE ROAD, RICHMOND. VIC. 3121

t: +61 3 9246 1200 | e: res@amora.melbourne | w: amorahotels.com/melbourne

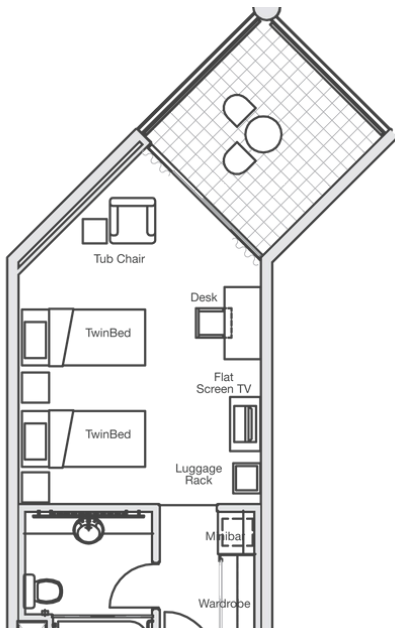
## ACCOMMODATION FLOOR PLANS



**COURTYARD QUEEN ROOM  
WITH BALCONY** 32 square metres



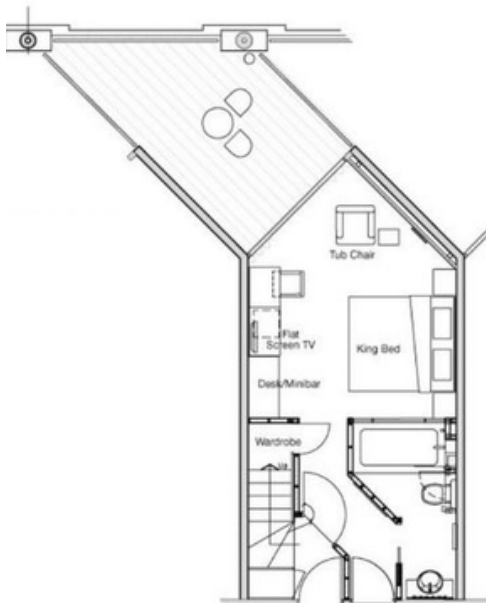
**COURTYARD TWIN ROOM  
WITH BALCONY** 32 square metres



**COURTYARD KING ROOM  
WITH BALCONY** 34 square metres



**RIVERVIEW SPA SUITE**  
43 square metres

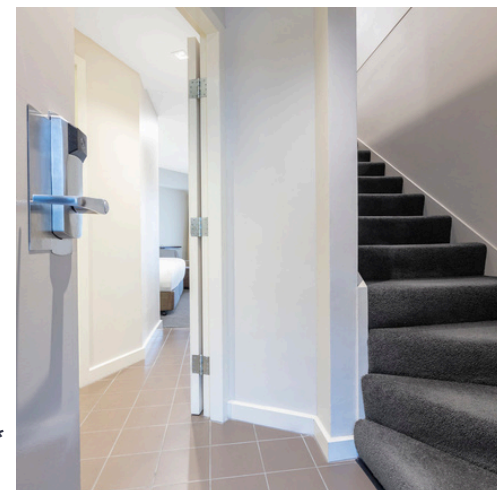
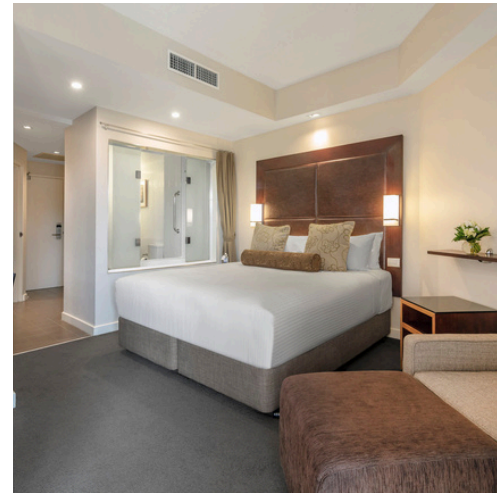


**KING ROOM WITH SPA BATH  
AND BALCONY\*** 27 square metres



**QUEEN LOFT APARTMENT\***  
36 square metres

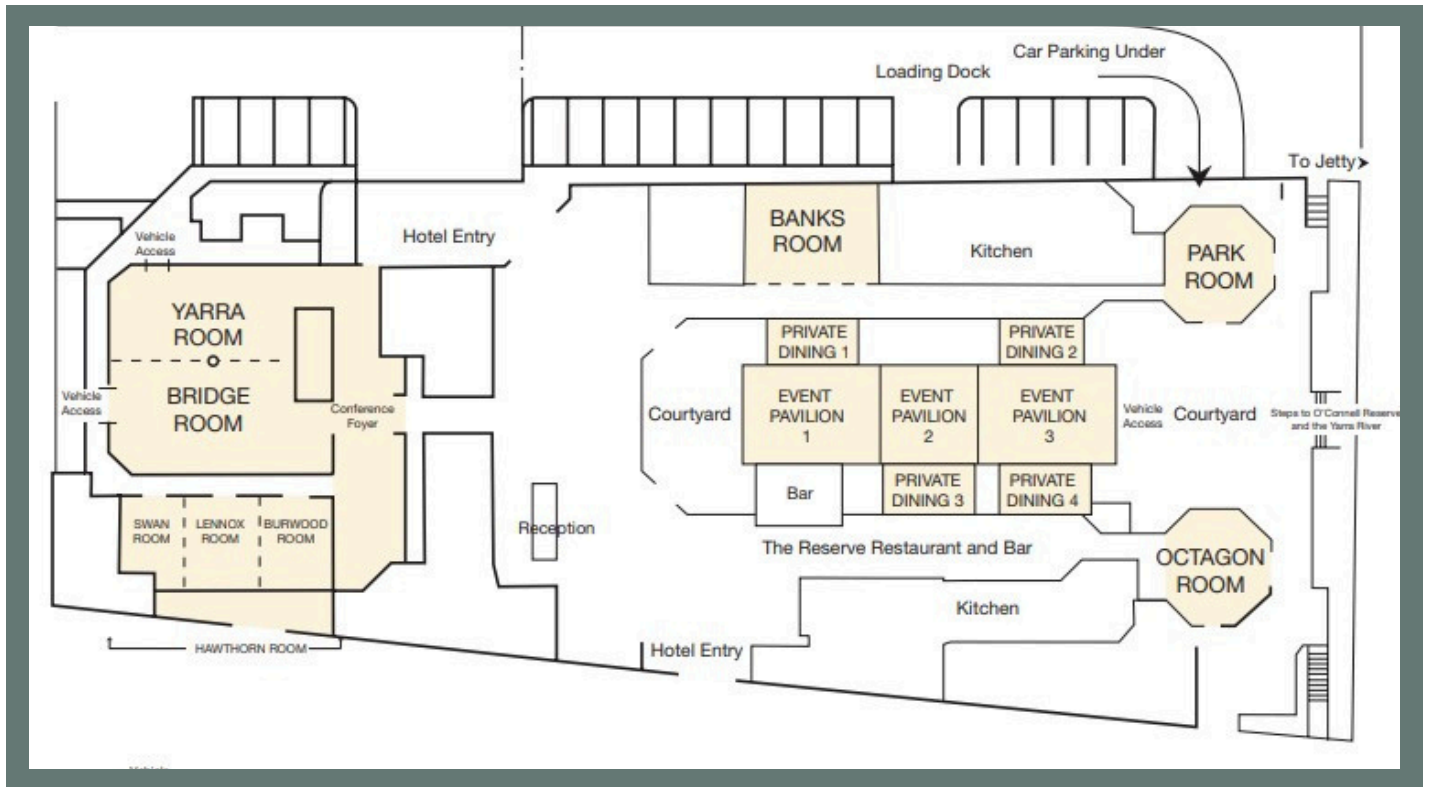
**\*These 2 rooms can interconnect to create the 2 bedroom townhouse apartment\***



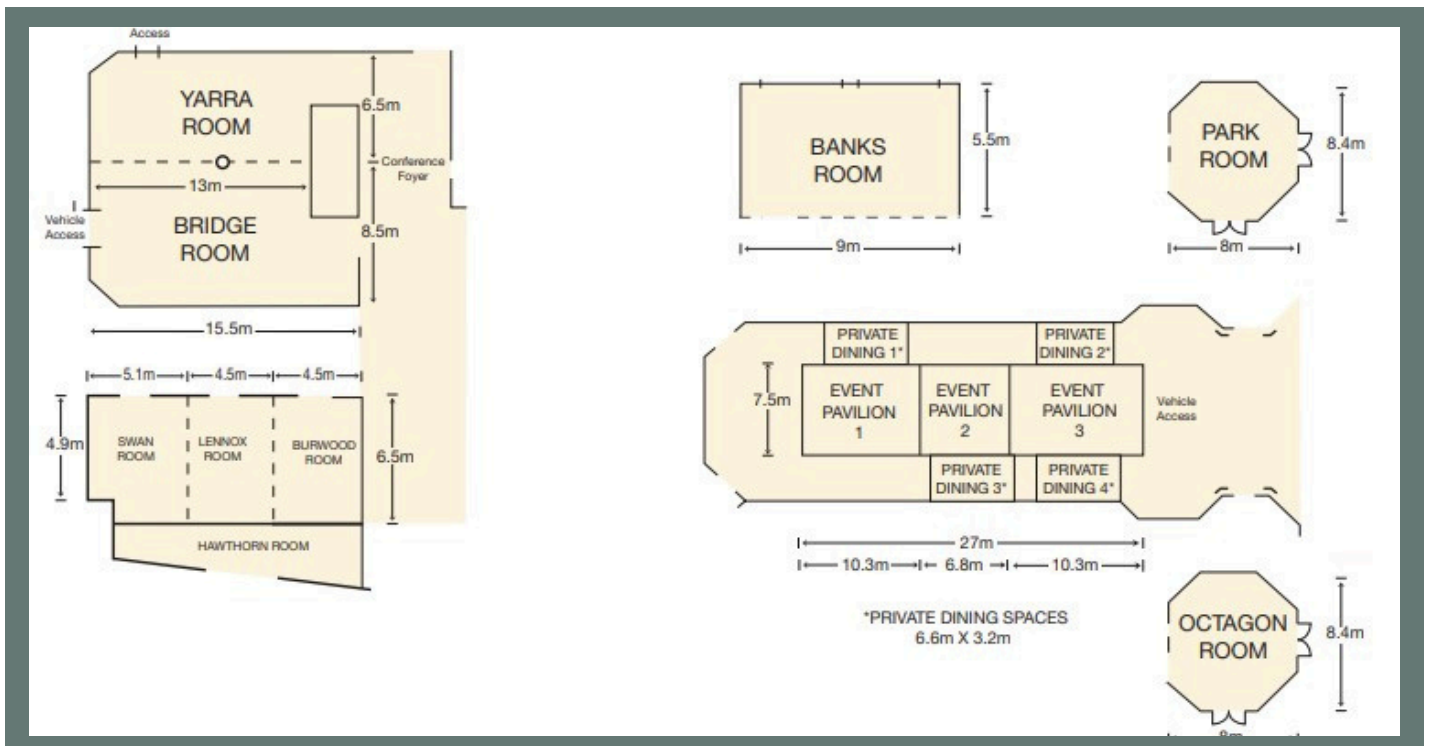


## EVENT FLOOR PLANS

### GROUND FLOOR



### FUNCTION ROOMS



# CAPACITY CHART

ROOM NAME	THEATRE	CLASSROOM	BANQUET AV / NO AV	COCKTAIL	BOARDROOM	U-SHAPE	CABARET PER TABLE 7 / 8	WIDTH	LENGTH	AREA SQM	CEILING HEIGHT
EVENT PAVILION	200	90	130/150	200	74	78	91/104	7.5	27	203	2.7
EVENT PAVILION + PRIVATE DINING	200	90	150/200	250	74	78	105/120	10.7	27	287	2.7
BRIDGE ROOM	120	60	70/70	120	26	33	49/56	8.5	15.5	112	2.9
YARRA ROOM	100	30	50/50	80	26	30	35/40	6.5	15.5	85	2.9
BRIDGE & YARRA	220	81	130/150	200	-	-	91/104	15	15.5	200	2.9
PARK ROOM	50	30	40/50	50	14	20	28/32	8.4	8	67.2	2.7
BANKS ROOM	40	24	30/40	40	14	20	21/24	5.5	9	49.5	2.7
BURWOOD ROOM	20	12	20/20	15	10	10	7/8	6.5	4.5	29	2.7
LENNOX ROOM	20	12	20/20	15	10	10	7/8	6.5	4.5	29	2.7
SWAN ROOM	20	12	20/20	15	10	10	7/8	6.5	4.5	27	2.7
BURWOOD & LENNOX ROOMS	48	24	40/40	50	20	24	28/32	6.5	9	58	2.7
LENNOX & SWAN ROOMS	48	24	30/30	50	20	24	21/24	6.5	9	56	2.7
HAWTHORN ROOM	80	33	60/60	80	32	36	42/48	6.5	14.1	85	2.7
OCTAGON ROOM	50	30	40/50	50	20	24	28/32	8.4	8	67.2	2.7

## Event Pavilion Capacities

ROOM NAME	THEATRE	CLASSROOM	BANQUET AV / NO AV	COCKTAIL	BOARDROOM	U-SHAPE	CABARET PER TABLE 7 / 8	WIDTH	LENGTH	AREA SQM	CEILING HEIGHT
EVENT PAVILION 1	50	24	40/50	60	20	24	28/32	7.5	10.3	77	2.7
EVENT PAVILION 2	32	18	20/30	45	14	18	14/16	7.5	6.8	51	2.7
EVENT PAVILION 3	50	24	40/50	60	20	24	28/32	7.5	10.3	77	2.7
EVENT PAVILION 1 & 2	150	48	70/90	150	32	36	49/56	7.5	17	128	2.7
EVENT PAVILION 2 & 3	150	48	70/90	150	32	36	49/56	7.5	17	128	2.7
PRIVATE DINING 1	-	-	12	20	12	-	-	3.2	6.6	21	2.7
PRIVATE DINING 2	-	-	12	20	12	-	-	3.2	6.6	21	2.7
PRIVATE DINING 3	-	-	12	20	12	-	-	3.2	6.6	21	2.7
PRIVATE DINING 4	-	-	12	20	12	-	-	3.2	6.6	21	2.7

