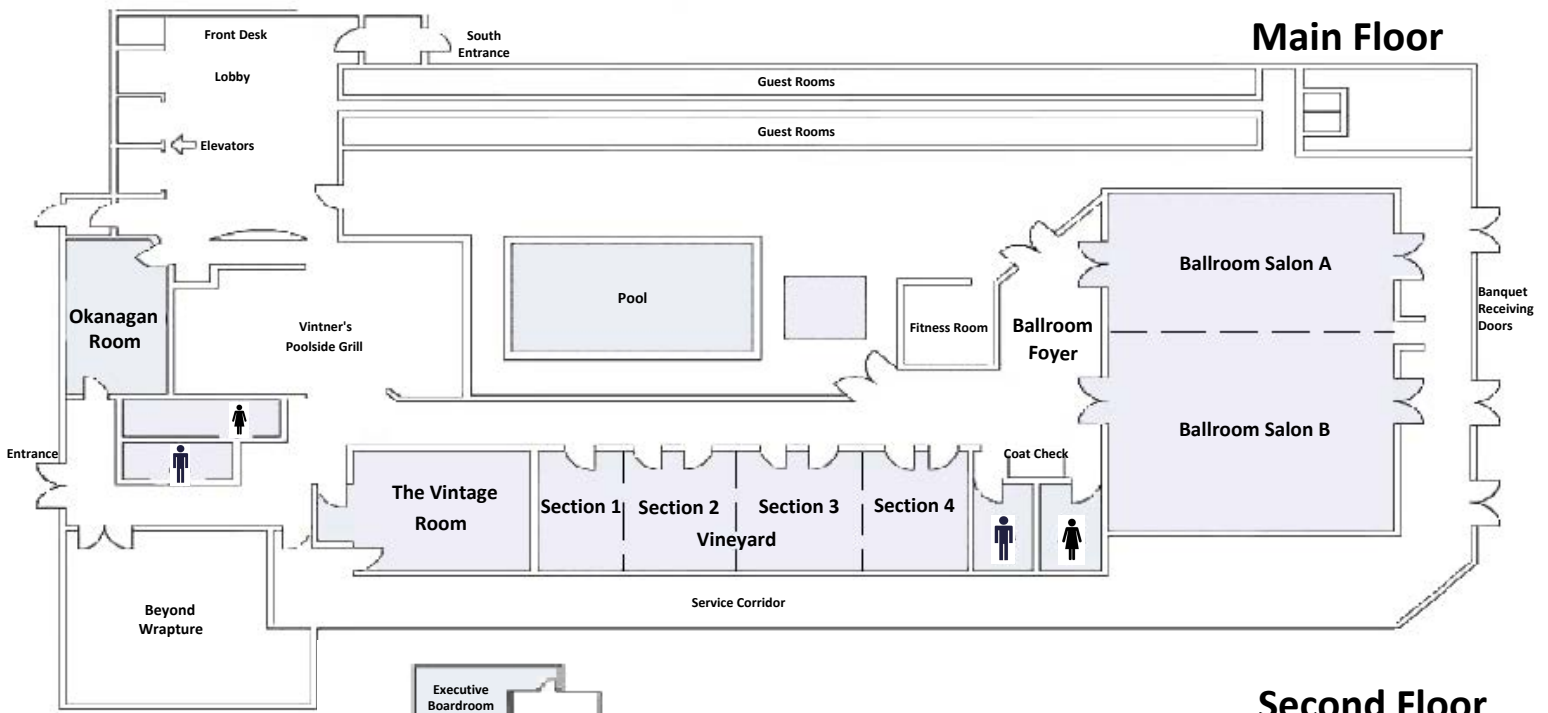
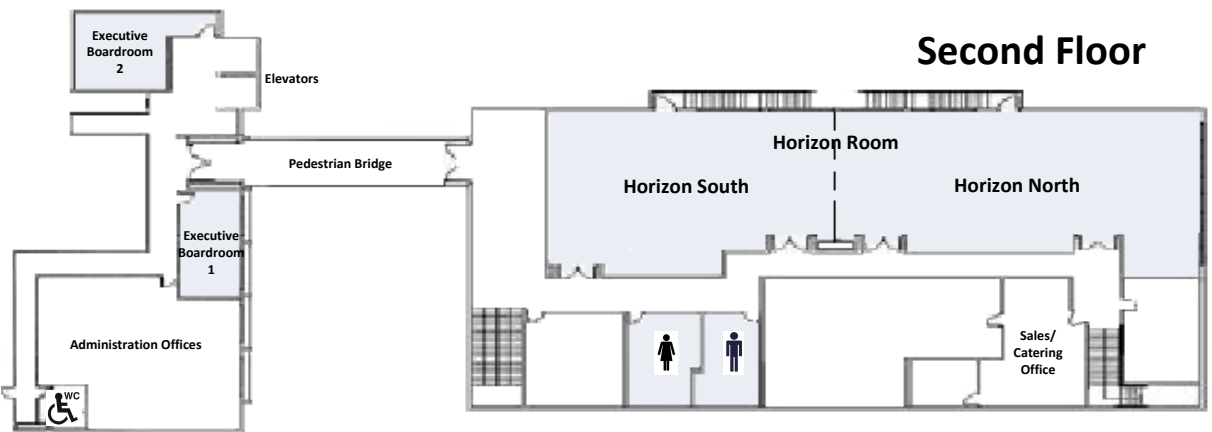


Main Floor



Second Floor



	Square Foot	Theatre	Classroom	U-Shape	Boardroom	Rounds	2/3 Rounds	Reception (empty)	Ceiling
The Ballroom- Main Floor	4160	450	220	-	-	300	175	500	14'
Salon A- Main Floor	1664	90	72	40	32	90	63	200	14'
Salon B- Main Floor	2496	168	120	50	40	150	105	300	14'
The Ballroom Foyer- Main Floor	1300	-	-	-	-	-	-	-	9'9"
The Vineyard- Main Floor	2520	175	100	-	-	140	98	150	9'6"
Section 1- Main Floor	360	-	-	-	4	-	-	-	9'6"
Section 2- Main Floor	720	40	24	20	26	40	35	40	9'6"
Section 3- Main Floor	720	40	24	20	26	40	35	40	9'6"
Section 4- Main Floor	720	40	24	20	26	40	35	40	9'6"
The Okanagan Room- Main	1100	50	30	30	30	50	35	70	9'
The Horizon Room- 2nd Floor	3774	240	120	-	-	200	140	280	9'6"
The Horizon South- 2nd Floor	1745	80	51	40	80	80	56	100	9'6"
The Horizon North- 2nd Floor	1993	140	60	48	48	100	70	150	9'6"
The Horizon Foyer- 2nd Floor	444	-	-	-	-	-	-	-	9'
Executive Boardroom 1- 2nd Floor	270	-	-	-	8	-	-	-	8'
Executive Boardroom 2- 2nd Floor	270	-	-	-	10	-	-	-	8'
The Vintage Room	1400	70	32	27	24	64	48	-	-
The Capri Room- 7th Floor	895	60	24	30	30	40	35	60	10'

Note: The Horizon room only offers buffet style food service.

The capacity of the rooms are maximum set-up without audio/visual equipment, food and beverage set-up, dance floor, staging/risers, or displays. Capacity will be reduced according to client set-up and audio/visual requirements.

reservations
coasthotels.com
 800.663.1144

Coast Capri Hotel
 1171 Harvey Avenue, Kelowna BC, V1Y 6E8
 t. 250.860.6060 f. 250.762.3430