



**SUNWAY**<sup>®</sup>

MediSpa



# BODY MASSAGES & TREATMENTS



TRADITIONAL MALAY URUT / AROMATHERAPY MASSAGE / FOOT MASSAGE / BACK MASSAGE / HEAD NECK SHOULDER / DEEP TISSUE MASSAGE / COFFEE BODY SCRUB  
HIBISCUS & ROSE SCRUB / BALINESE BOREH SCRUB / MICRONIZED ALGAE MARINE MASK / MOCOCA BORNEO BODY WRAP / BODY TONE MARINE BODY PACK



## Traditional Malay Massage

60 mins / RM425\*  
90 mins / RM565\*

Urut Melayu is a deep tissue massage orchestrated with a gentle touch of the hands and fingers to enkindle a symphony of tranquility onto the whole body. This therapeutic art of rejuvenation can nurture one's overall physical well-being such as improving mobility and healing of various ailments. Mental health is also aided to restore a peace of mind.

## Aromatherapy

60 mins / RM425\*  
90 mins / RM565\*

An elegant synergy of a gentle massage with healing powers of pure essential oils, which revolves around the Swedish massage's long, smooth strokes and kneading techniques. Along with fostering blood circulation and lymphatic fluids, this massage aids in releasing toxins, cultivating a balance in energy flow of the meridians and breaking down tension within the muscles.

## Deep Tissue Massage

60 mins / RM475\*  
90 mins / RM660\*

A combination of Hawaiian Lomi Lomi massage, acupressure and gentle stretching. The benefits of soothing essential oils ease muscular tension, with a focus on the back, shoulders and nape of the neck. Perfect for recuperating after a long journey and to release muscle tension and knots caused due to accumulated lactic acids in muscles.

## Foot / Back / Head Neck Shoulder Massage

30 mins / RM190\*

These area focused treatments improve blood circulation and relaxes the tension in the muscles and aids in the lymphatic drainage by dispersing toxins in the concerned area and increasing oxygen supply to the tissue.



## Hibiscus & Rose Scrub

45 mins / RM240\*

Experience the highest of comfort with a blend of hibiscus, rose petals, French clay, ground rice woven with pure essential oils of rose, geranium, ylang-ylang and lavender. The ultra-hydrating and nourishing properties at their core evoke a radiant and luminous glow upon your skin.

## Coffee Body Scrub

45 mins / RM240\*

This revitalising Borneo herbal coffee scrub is rich in anti-oxidants, natural fruit acids and caffeine. Together with the exotic fusion of Tongkat Ali and ginseng, this treatment enhances your skin to adopt a silky smooth and hydrated complexion – an epitome of nourishment.



## Balinese Boreh Scrub

45 mins / RM240\*

A melody of rejuvenation with exotic spices that induces warmth, soothing your body aches, increasing blood circulation and revitalising the skin. The perfect panacea for a tired body.

## Mococa Borneo Body Wrap

45 mins / RM240\*

A unique remedy revolving around the natural essences of cocoa, coconut milk and coffee. Cocoa's vitamins and minerals provide nourishment to the skin whilst delighting the senses, creating a crescendo in serenity.

## Marine Active Body Treatment

## Micronized Algae Marine Mask

60 mins / RM520\*

Pure Marine Algae & Marine Mud are rich in magnesium, calcium, other trace elements and micro nutrients. The detoxification powers of marine mud remove toxins from your body and also soothe general aches and pains, activate circulation, sluggish metabolism and for general wellbeing. End the ritual with a light massage and application of body moisture lotion.

## Body Tone Marine Body Pack

60 mins / RM520\*

The combination of Fucus (a brown algae from Finistere and widely used in Thalassotherapy care), Lithothamnium (a red fragile seaweed from Breton coasts that contains numerous marine and trace elements) and Laminaria (a brown seaweed from Brittany that enhances the slimming action). Laminaria provides iodine needed for the regulation process while Fucus and Lithothamnium assist to increase elimination and lymphatic activity resulting in cleansing and breakdown of cellulites. End the ritual with a light massage and application of body moisture lotion.



# BODY RENEWAL

Your Path to Serenity



# FACIAL TREATMENTS

AROMATHERAPY ESSENCE FACIAL / REJUVENATING ENZYMATIC & JADE FACIAL / DEEP CLEANSE FACIAL / TRIPLE ROSE INTENSIVE LIFTING FACIAL



### Aromatherapy Essence Facial

60 mins / RM520 \*

Revitalising aromatherapy facial with purifying French clay, plant nutrients and anti-oxidants gently restores and balances the skin. Pure plant essences tailored to your skin type enhance elimination and regeneration to ensure the skin is always smooth, supple and glowing with health. Suitable for all skin types.

### Rejuvenating Enzymatic & Jade Facial

60 mins / RM520 \*

A gentle brightening and hydrating facial treatment with natural AHA fruit enzymes papain and bromelain to exfoliate dull skin cells and encourage regeneration and renewal. Jade roller helps boost circulation, reduce puffiness as well as lift and energize the skin. The synergy of customized precious essential oils and natural anti-aging benefits combine to smoothen and nurture fine lines, enhance the skin's natural luminous appearance and balance skin tones.

### Deep Cleanse Facial

*(Perfect for Gentlemen)*

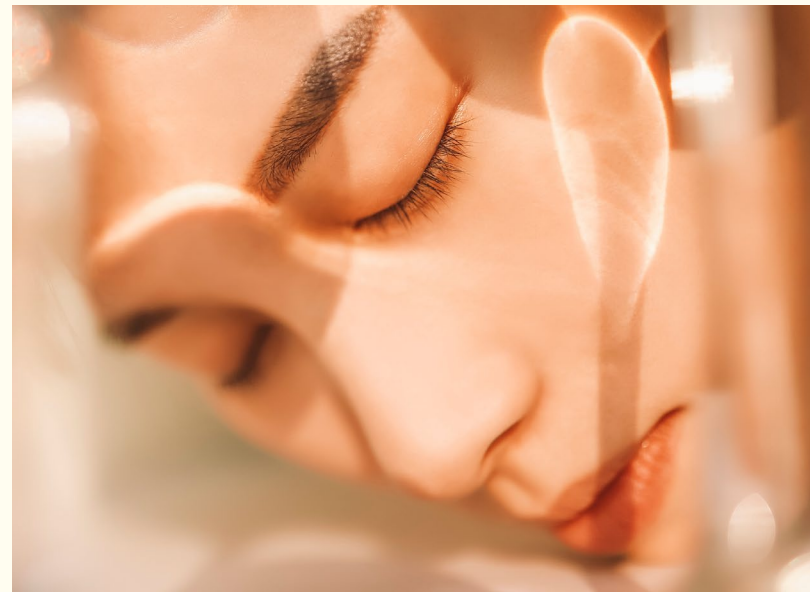
60 mins / RM520 \*

Choice botanicals formulated for congested skin combined with potent marine minerals and clays rich in micro nutrients & trace elements work in synergy to cleanse, detox and restore the skins natural balance. Enriched with the healing powers of essential oils Deep Cleanse is the perfect facial to nourish, hydrate and soothe. For best results a series of treatments are recommended to maintain healthy, clear and glowing skin.

### Triple Rose Intensive Lifting Facial

75 mins / RM565 \*

Triple Rose Intensive Lifting Facial treatment provides a super boost to dehydrated, sun damaged and aging skin. A specialize age-defying facial massage technique gently lifts and energizes the skin targeting fine lines and loss of tone. This is followed by a luxurious triple rose skin rejuvenating and hydrating facial masque with deeply nourishing and balancing pure botanicals. Triple Rose – the ultimate hydrating facial to redefine, soften and replenish texture and tone.



# FACIAL ELEGANCE

— Rejuvenate Your Skin with Style





# MEDI AESTHETIC SPA TREATMENTS

AIR-IN CLEAR SKIN FACIAL / AIR-IN WATERBANK FACIAL / AIR-IN TONNING & BRIGHTENING FACIAL / AIR-IN ANTIOXIDANT FACIAL / AIR-IN ROOTENSION SCALP SPA  
EPIGENETICS AND HEAVY METAL TEST (S-DRIVE) / FULL BODY LYMPHATIC DETOX & REGENERATION PROGRAMME / STEM CELL HAIR SPA (INDIBA) / CELLULAR FACIAL



FOR ACNE

### Air-In Clear Skin Facial 60 mins / RM645\*

Trans-dermal absorption system through air-needle that allows active ingredients of NAD+, Salicylic acid and magnesium to penetrate deep into the skin barrier.

*Target : Acne & Oily Skin*

FOR HYDRATION

### Air-In Waterbank Facial 60 mins / RM645\*

Trans-dermal absorption system through air-needle that allows active ingredients of NAD+, Ceratonin and Sodium PCA to penetrate deep into the skin barrier.

*Target : Dry & Combination Skin*

FOR PIGMENTATION

### Air-In Toning & Brightening Facial 60 mins / RM645\*

Trans-dermal absorption system through air-needle that allows active ingredients of NAD+, Tranexamic acid, Bisabolol and Niacinamide to penetrate deep into the skin barrier.

*Target : Dry, Combination Skin, Pigmentation & Uneven Skin tone*

FOR REPAIR & LIFTING

### Air-In Antioxidant Facial 60 mins / RM645\*

Trans-dermal absorption system through air-needle that allows active ingredients of NAD+, Fibroin and Sericin to penetrate deep into the skin barrier.

*Target : Oily, Dry, Combination Skin, Premature Aging & Fine Lines*

FOR CELL REGENERATION AND LIFTING

### Cellular Facial - Indiba Proionic System 75 mins / RM830\*

Skin tightening treatment via a non-invasive bio stimulation and regeneration, boosting collagen and elastin synthesis, and improving blood flow.

*Target: Skin laxity, Sagginess, Fine Lines & Wrinkles*



# ETERNAL ELEGANCE

— Your Path to Lasting Beauty





## Hair / Scalp

SCALP SPA

### Air-In Rootension 40 mins / RM645\*

Trans-dermal absorption system through air-needle that allows active ingredients of NAD+, Black EX Collagen, Copper-tripeptide-1, and Acetyltetrapeptide-3 to penetrate deep into the scalp.

HAIR SPA

### Stem Cell - Indiba 40 mins / RM830\*

Restores capillary health, increase blood flow and hair thickness and improves the supply of oxygen to the scalp and follicles. For hair redensification and hair strength.



## DIVINE HAIR ELIXIR

Revitalize from Roots to Ends

## Full Body

FULL BODY

### Lymphatic Detox & Regeneration Programme 90 mins / RM1130\*

This treatment provides energy for the body to perform its cleansing functions and recover its optimal functioning. The whole body is worked, activating the path of the lymph nodes, producing a "collection effect" of toxins, which the body ends up accumulating or expelling it out.

#### BENEFITS

- Debloats & Depuffs
- Break Down Cellulite & Fat Cells
- Glowing Skin
- Improve Blood Circulation
- Helps with Post-Injury Swelling
- Eases Body Tension

S-DRIVE

### Epigenetic & Heavy Metal Test RM755\*

Hair and bulb follicles prove effective as biomarkers, accumulating information on homeostasis and epigenetics over time. This personalized, real-time data provides insights into underlying nutritional and metabolic conditions, reflecting various processes often before symptoms manifest.

The resonant information evolves with the individual's epigenetic influences, shaped by macro and micro environments. These factors include chemical toxins, air quality, nutrition, electromagnetic exposure, and mental activity. The report remains relevant for 90 days, aligning with the dynamic nature of epigenetic influences.



# BODY TREATMENT

---

# PROIONIC TREATMENT

◆◆◆

VISCERAL FAT LOSS AND ABDOMINAL FIRMING / PERKY BREAST / FLABBY ARM / CELLULITE FRONT LEG  
STIFF LOWER BACK / STIFF NECK AND UPPER BACK / CELLULITE BACK LEG



## Proionic Treatment

**Cellulite Front leg** 40 mins / RM830\*

Target : Fat Loss, Collagen Stimulation, Skin Tightening & Lymphatic Drainage

**Cellulite back leg** 40 mins / RM830\*

Target : Fat Loss, Collagen Stimulation, Skin Tightening & Lymphatic Drainage

**Visceral Fat Loss & Abdominal firming** 40 mins / RM830\*

Target : Superficial Fat, Visceral Fat & Skin Firming

**Perky Breast** 40 mins / RM830\*

Target : Breast Firming

**Flabby Arm** 40 mins / RM830\*

Target : Fat Loss & Skin Tightening

Proionic treatment is based on the proven CRET® system. By working at a frequency of 448kHz, three biological effects are generated: biostimulation, vascularization and hyperactivation. These processes increase cellular metabolism, blood flow and circulation, at the same time as they improve the oxygenation of tissues and cells. It also help generate new collagen fibers, detoxify the tissue and increase lymphatic drainage. At 448kHz frequency, numerous studies shows the intrinsic properties of normalization of cell function, pain management, anti-inflammatory, anti-adipogenic action and its stimulating effect on STEM CELLS.



## Physiotherapy

**Stiff Neck & Upper Back** 40 mins / RM830\*

Target : Anti-inflammatory, Pain Management & Enhance Soft Tissue Recovery

**Stiff Lower Back** 40 mins / RM830\*

Target : Anti-Inflammatory, Pain Management & Enhance Soft Tissue Recovery





For more info, scan the **QR Code**

Or contact us at **03 - 7495 1666**

Or visit our website **[www.sunwaymedispa.com](http://www.sunwaymedispa.com)**

 Sunway MediSpa

 @sunway\_medispa