



# RICHMOND HILL

## MEETING & EVENTS CAPACITIES

Room	Length x Width x Height	Reception	Cabaret	Theatre	Boardroom	Classroom	U-Shape	Private Dinner	Dinner Dance
Ballroom	22 x 13 x 4	250	144	220	-	100	50	240	228
Thames	8 x 4 x 4	60	-	30	16	14	-	16	-
Richmond	14 x 12 x 3	150	64	120	30	50	40	108	96
Oak	12 x 5 x 3	80	30	72	28	18	22	-	-
Ormond	11 x 8 x 3	-	45	70	22	30	26	-	-
Stafford	11 x 5 x 3	50	30	32	24	18	22	30	-
Cambrian	7 x 6 x 3	-	-	-	12	-	-	16	-
Queens	8 x 6 x 4	50	32	50	25	16	20	40	-
Beaufort	6 x 5 x 3	-	-	-	12	-	-	12	-
Chestnut	6 x 3 x 3	-	-	-	8	-	-	-	-
Birch	6 x 3 x 3	-	-	-	8	-	-	-	-
Ash	6 x 3 x 3	-	-	-	10	-	-	-	-
144 Main Restaurant	9 x 9 x 4	100	-	-	-	-	-	70	-
144 Lounge	6 x 6 x 4	30	-	-	-	-	-	-	-
144 Outdoor Terrace	10 x 6	50	-	-	-	-	-	-	-
144 Snug	5 x 4 x 4	20	-	-	-	-	-	-	-

Please note that all measurements are approximate



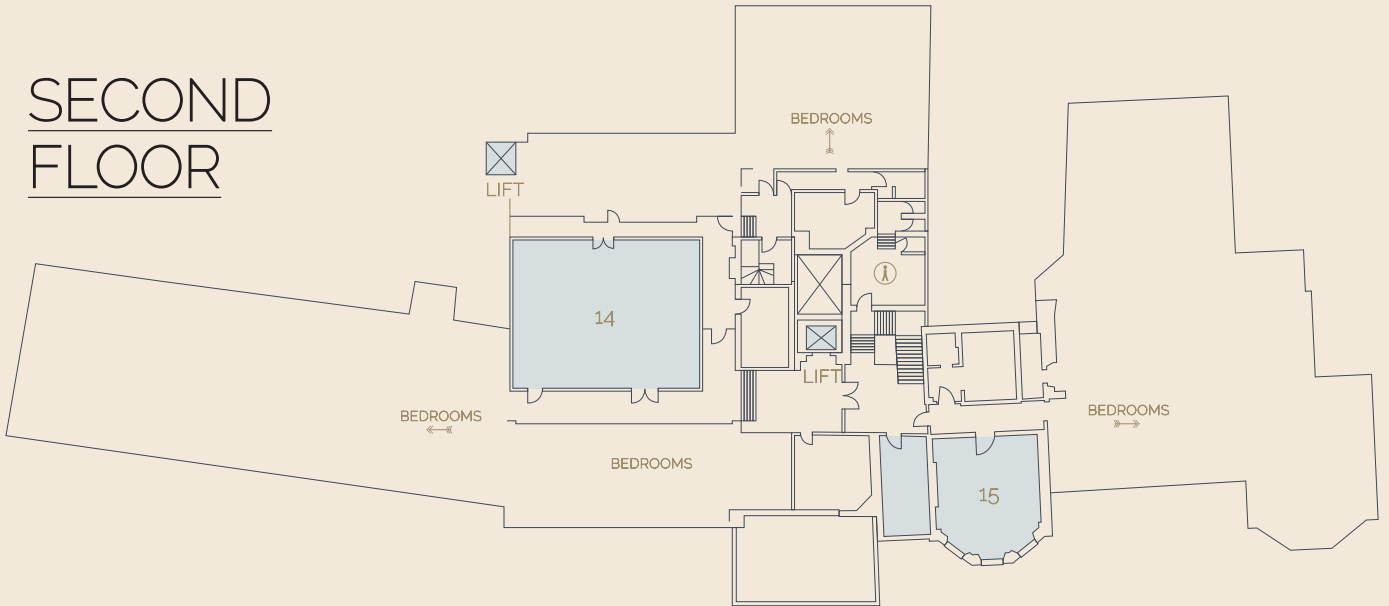
144-150 Richmond Hill, Richmond-upon-Thames, Surrey, TW10  
6RW

020 8940 2247

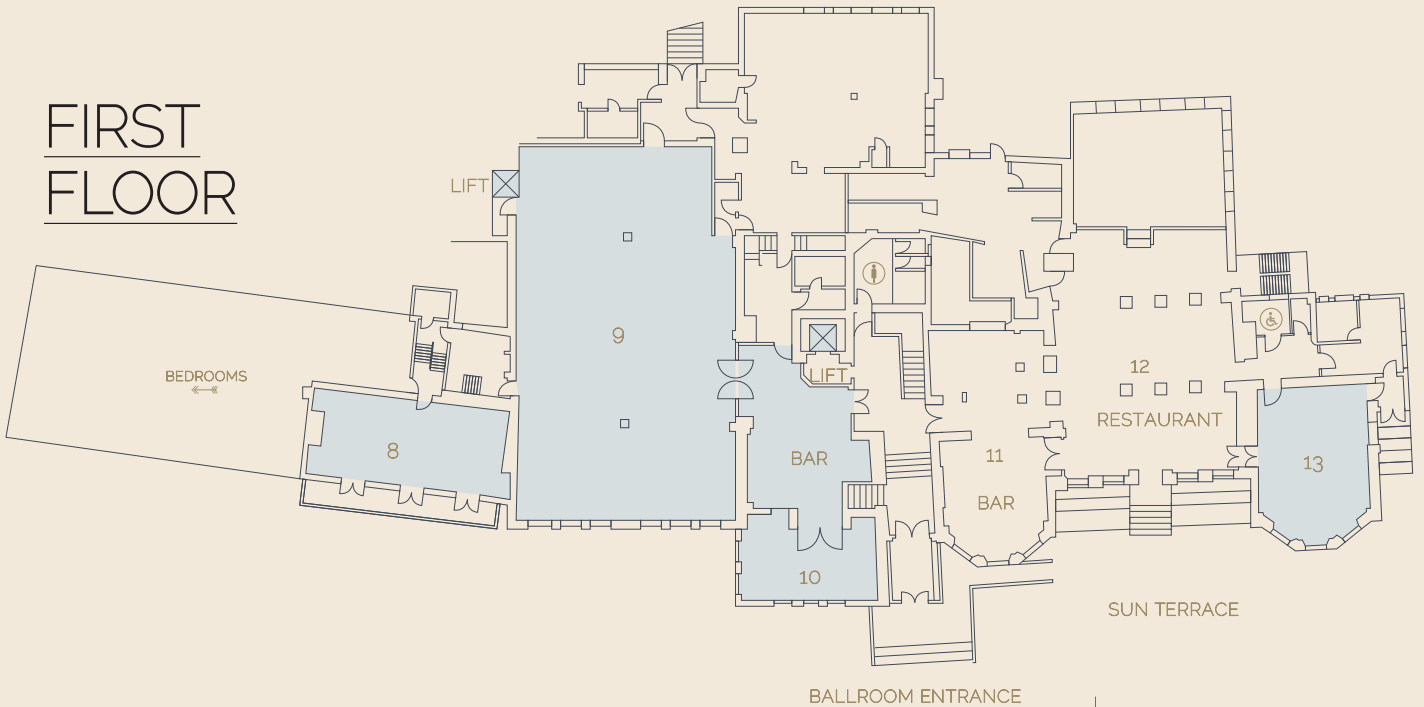
[meetingsandevents@richmondhill.co.uk](mailto:meetingsandevents@richmondhill.co.uk)

[www.richmondhill-hotel.co.uk](http://www.richmondhill-hotel.co.uk)

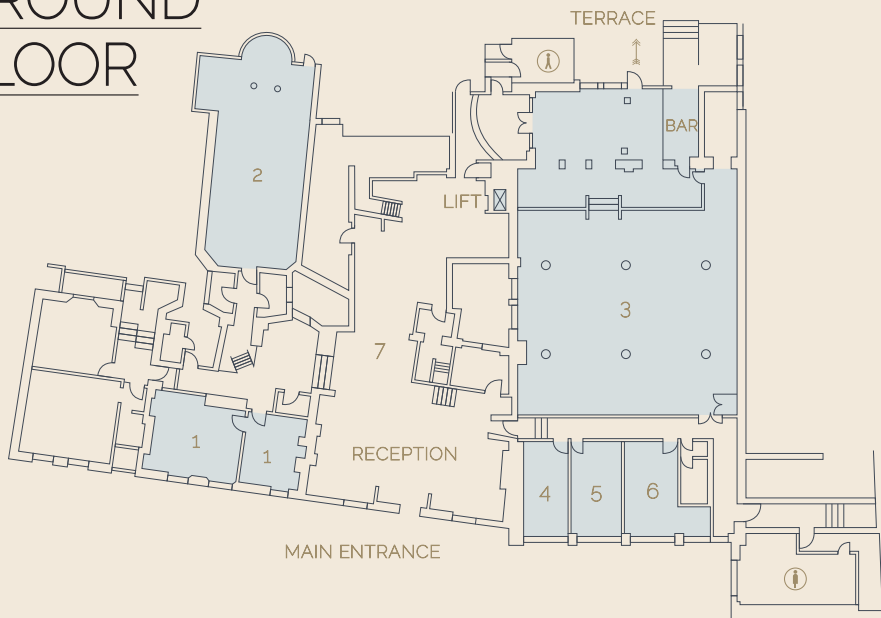
# SECOND FLOOR



# FIRST FLOOR



# GROUND FLOOR



# KEY

- 1 BEAUFORT
- 2 OAK
- 3 RICHMOND
- 4 CHESTNUT
- 5 BIRCH
- 6 ASH
- 7 RECEPTION
- 8 STAFFORD
- 9 BALLROOM
- 10 THAMES
- 11 BAR
- 12 RESTAURANT
- 13 QUEENS
- 14 ORMOND
- 15 CAMBRIAN

- MENS TOILETS
- LADIES TOILETS
- DISABLED TOILETS