

Bluefin Bay FAMILY OF RESORTS

# 2026 Wedding Services





## **BLUEFIN BAY FAMILY OF RESORTS WEDDINGS**

Weddings deserve a venue that's superior, spectacular and well worth the drive. When you host your wedding or special occasion at the Bluefin Bay Family of Resorts you have the combined facilities, amenities and accommodations of three stunning Lake Superior resorts from which to choose – Bluefin Bay, Surfside and Temperance Landing.

We believe that everything about your wedding day should make you feel beautiful, including the backdrop. Exchange vows in our cozy, private cove just a few feet from the shoreline of Lake Superior. Following the ceremony, host your reception in a private room at the Bluefin Grille or our larger ballroom at Surfside Resort. Our first-rate food and beverage services compliment our top-notch location.

At Bluefin Bay Family of Resorts, we host events with up to 80 people. All three of our Lake Superior Resorts offer upscale accommodations, breathtaking views, in-room amenities such as fireplaces and jetted whirlpool tubs, and our warm and friendly North Shore hospitality. Bluefin Bay has been frequently named Minnesota's Most Romantic Resort and MN Bride's Best Honeymoon Resort seven years in a row. Our resorts are also widely popular destinations for honeymoons, mini-moons and anniversaries!

The Bluefin Bay Family of Resorts offers three distinct lodging venues, ranging from the cozy and comfortable hotel suites, condos and townhomes of Bluefin Bay, to the total coastal luxury of our spacious townhomes at Surfside, to the distinctive log home luxury of Temperance Landing. Select from more than 20 different room styles and types to meet your group's unique needs.

All accommodations have spectacular Lake Superior views and most have in-room amenities such as fireplaces, whirlpool baths, and open spaces designed to let nature in.



Bluefin Bay's cozy and comfortable townhomes are so close to the water you can practically touch it.



Surfside's more contemporary townhomes offer vast expanses of glass and amazing lake views.



Temperance Landing is perfect for larger groups, sleeping 6 to 8 comfortably, in distinctive log home luxury.

*See all lodging options at [BluefinBay.com/stay](https://BluefinBay.com/stay) or follow us on Instagram @bluefinbay for room tours*



**Bluefin Bay Family of Resorts** is located within the most breathtaking natural environment in which to learn, relax, and play. We offer the most robust complimentary activities program of any North Shore resort and many of the activities listed below are included in your stay.

## SPRING, SUMMER & FALL

- Guided Sea Kayaking Tours on Lake Superior
- Kids Program
- Wilderness Canoeing
- Inland Kayaking
- Stand-up Paddleboarding
- Biking: Mountain & Gitchi-Gami Trail
- Golfing: Superior National Golf Course
- Hiking: Superior Hiking Trail
- Fishing: Charters Available on Lake Superior
- Scenic Gondola Rides & Alpine Slide at Lutsen Mountains
- Naturalist Programs
- Rock Picking Along the Shore
- Birding/Wildlife Watching
- Tennis & Pickleball

## WINTER

- Alpine Skiing & Snowboarding at Lutsen Mountains
- Cross Country Skiing
- Snowshoeing
- Ice Skating

## YEARROUND

- Yoga
- Guided Hikes
- Campfire & S'mores
- Craft Classes



Beach Patio



## Tofte Cove

- Capacity: 30 people
- Space can be reserved from 12:00-5:00 p.m. on the day of
- Please note that Tofte Cove is a natural Lake Superior beach and therefore subject to change based on conditions of the lakeshore
- Indoor space available at no cost if rain (subject to availability)

## Beach Patio

- Capacity: 75 people
- Space can be reserved from 12:00-5:00 p.m. on the day of
- Indoor space available at no cost if rain (subject to availability)

## Ceremony Space Pricing

**Saturdays: \$1,000**

**Fridays & Sundays: \$750**

**Mondays-Thursdays: \$500**

- Rental fees pay for the set-up, tear-down of the space, PA system, and reserved signs at entrances
- Chair rentals \$5 per chair
- Outdoor table with linen (18"x72" or 32"x72") \$50 each
- Arch rental \$150
- Shuttle Service between Bluefin Bay, Surfside, and Temperance Landing from 12:00pm-11:00pm \$550

[Please contact our Event Coordinator at 218-663-6224 for details.](#)

## RECEPTION SPACES

## PICTURES

Superior Room



Shore Room



Surfside Ballroom

## Superior Room

- Capacity: 50
- Available 3:00-6:30 p.m.
- Saturdays: \$2,500 with \$2,000 F&B minimum
- Sundays & Fridays: \$1,950 with \$2,000 F&B minimum
- Mondays-Thursdays: \$1,500

## Shore Room

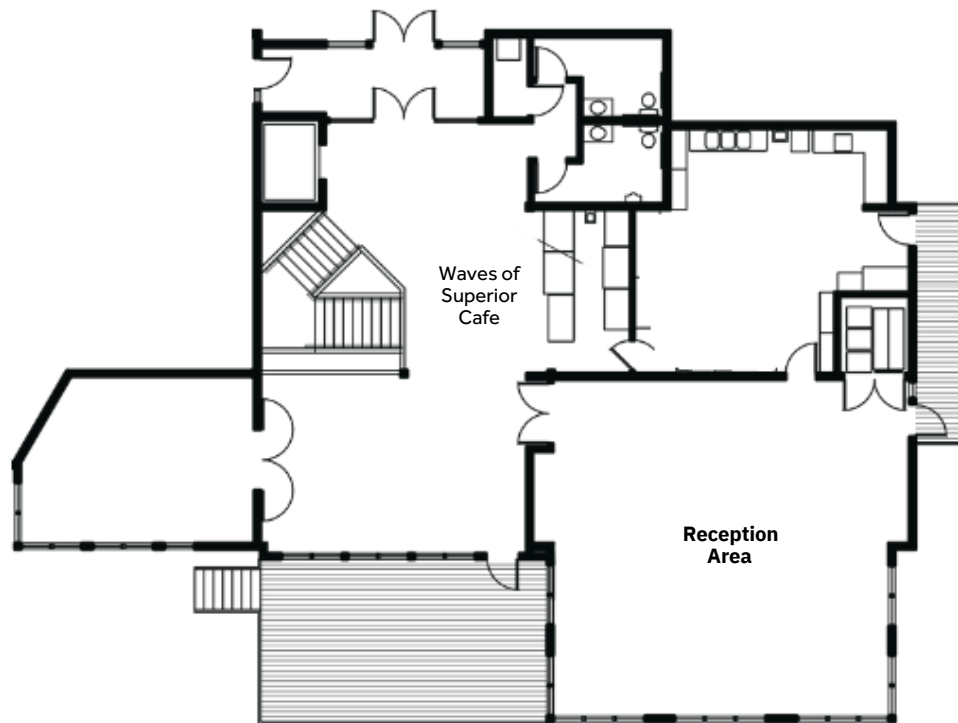
- Capacity: 20
- Available 3:00-6:30 p.m.
- Saturdays: \$1,500 with \$1,500 minimum
- Sundays & Fridays: \$950 with \$1,000 F&B minimum
- Mondays-Thursdays: \$600

## Surfside Ballroom

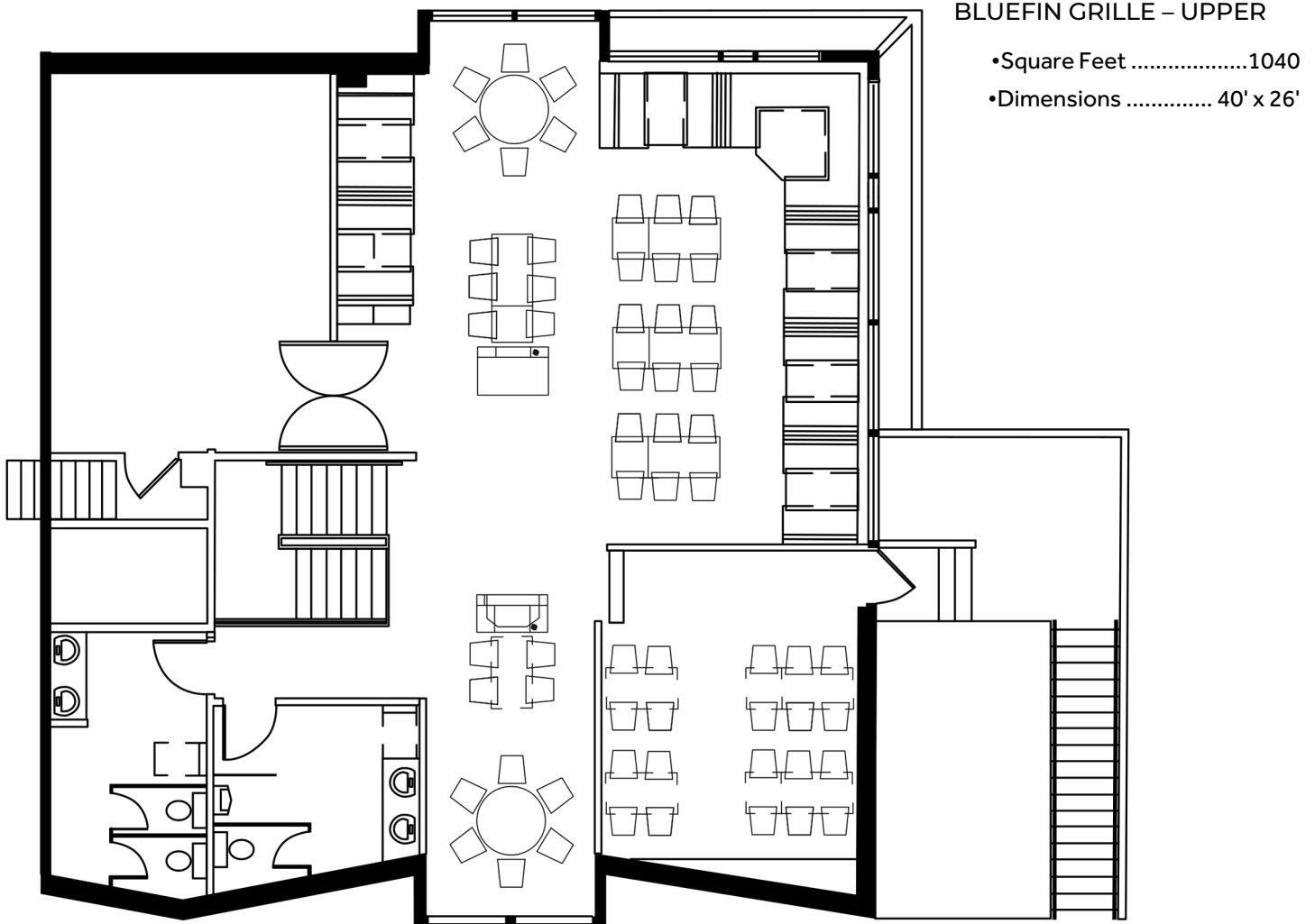
- Capacity: 75
- Available 3:00-11:00 p.m.
- Saturdays: \$3,500 with \$3,500 F&B minimum
- Sundays & Fridays: \$2,950 with \$3,500 F&B minimum
- Mondays-Thursdays: \$2,000
- Dance floor rental \$500
- Chair covers \$5 per chair

Please contact our Event Coordinator at 218-663-6224 for details.

Our state-of-the-art meeting and event facility at Surfside offers the ultimate in quality, flexibility, style and comfort. The grand lakeside ballroom has vaulted ceilings, wall-to-wall windows offering lake views, flexible table and seating arrangements, and a new banquet kitchen, making it perfect for weddings and banquets, yet flexible enough for board meetings, executive retreats or team trainings. The open foyer and cafe area with a lakeside deck is ideal for hosting a reception or cocktail hour. Indoor and outdoor seating can also be used for group breakout sessions. The Ledgerrock room with its comfortable executive chairs is ideal for breakout sessions, board meetings or smaller groups.



Bluefin Bay has been a premier wedding and event destination for more than 30 years, hosting wedding rehearsal dinners, wedding ceremonies, receptions, dances, anniversary parties, family reunions, and more. Our ever popular Bluefin Grille Superior Room accommodates groups up to 50 and offers an open space all on one level with vast lake views. The Shore Room at the Bluefin Grille, also with lake views, can be sectioned off into a private dining or meeting area in the back. The Tofte Room, our main conference room at Bluefin Bay, accommodates 20-36 for a banquet or meeting, and up to 40 for a reception. Guests choosing to host their event at Bluefin Bay enjoy the proximity to Bluefin lodging and outdoor amenities, as well as the flavorful and imaginative cuisine of our award-winning restaurants.



# Banquet Food Options

Menu selections will be composed into a custom menu for your group

## APPETIZERS

**Platters :** Small (serves approx. 25 guests)  
Large (serves approx. 50 guests)

**Artisan Cheese Display \$140 Small \$275 Large**

Specialty & local cheese with assorted crackers & naan

**Fresh Fruit Tray \$125 Small \$246 Large**

An arrangement of melons and berries

**Antipasto Display \$150 Small \$295 Large**

Assorted cured meats & cheeses served with olives, peppers, crackers and naan

**Artichoke Dip \$140 Small \$275 Large**

Artichoke hearts, garlic, cream cheese, sour cream, parmesan, and fresh dill. Served with naan

**Shrimp Display \$190 Small \$375 Large**

Shrimp served with a house-made cocktail sauce and lemon wedges

## Warm Appetizers: Per Dozen

**Boneless Chicken Wings \$21**

Choice of sauce: Maple Chipotle or Buffalo Ranch and Bleu Cheese

**Beef Brochette \$80**

Tenderloin, vegetables, pineapple, tamari soy glaze

**Duck & Bacon Wontons \$45**

Served with sweet chili sauce

**Coconut Shrimp \$29**

Served with hoisin sauce

**Mini Walleye Cakes \$50**

Served with cilantro lime aioli and corn relish

# Banquet Food Options

Menu selections will be composed into a custom menu for your group

## SALADS

### House Salad \$7

Artisan lettuce, fresh seasonal vegetables, onions, croutons  
Choose one dressing per group: Buttermilk Dill Ranch, Bleu Cheese, Maple Walnut Vinaigrette

### Caesar Salad \$7

Romaine lettuce, parmesan cheeses, croutons, caesar dressing

## MEAL OPTIONS

Choose up to three per group

### Pan Fried Walleye (GF) \$34

Chickpea breading, lemon caper butter sauce, seasonal vegetables

### Salmon (GF) \$38

Seasonal salmon & vegetables

### Filet Mignon (GF) \$49

Red wine mushroom reduction, seasonal vegetables

### Surf n' Turf \$59

Filet mignon with bearnaise, jumbo shrimp, seasonal vegetables

### Wagyu Sirloin (GF) \$42

Creamy mushroom sauce, seasonal vegetables

### Beef Short Rib (GF) \$29

Sesame ginger braised, seasonal vegetables

### Northwoods Chicken (GF) \$34

Herb marinated half chicken, creamy tuscan sauce, seasonal vegetables

### Eggplant Parmesan (GF) \$29\*

Roasted eggplant, mediterranean blend, tomatoes, olives, fresh herbs, goat cheese

### Creamy Pesto Ravioli \$25\*

Cheese filled ravioli, fresh pesto cream sauce, spinach, cherry tomatoes

Starch options (choose one): Mashed Potato, Wild Rice Pilaf

\*items do not include a choice of starch

All steak options are served medium

## Event Bar Pricing

Below bar options are for the Surfside Ballroom. Weddings hosted within the Bluefin Grille are serviced from the full bar there.

### HOUSE BRAND PRICING \$7

### PREMIUM BRAND PRICING \$9

#### House Brands:

New Amsterdam Vodka  
New Amsterdam Gin  
Phillip's Rum  
E&J Brandy  
Windsor Whiskey  
Durango Tequila  
Jim Beam Bourbon

#### Premium Brands:

Tito's Vodka  
Tanqueray Gin  
Bacardi Rum  
Crown Royal Whiskey  
Jameson Irish Whiskey  
Jack Daniel's Whiskey  
Maker's Mark Bourbon  
Patron Tequila

#### House Wines

**\$8/glass**  
**\$30/bottle (if hosted bar)**  
Chardonnay  
Cabernet Sauvignon  
Sauvignon Blanc  
Merlot  
Pinot Grigio

#### Premium Wines

**\$11/glass**  
**\$40/bottle (if hosted bar)**  
Chardonnay  
Cabernet Sauvignon  
Sauvignon Blanc  
Merlot  
Pinot Grigio

#### Beer

**\$6/bottle**  
Coors Light  
Michelob Golden Light  
Bent Paddle Hop  
Castle Danger Cream Ale