

# Eastin Grand Hotel Phayathai



EASTIN  
GRAND HOTEL  
PHAYATHAI



*Service and Value Redefined.*

Eastin Grand Hotel Phayathai is located in a mixed-use complex with hotel elements, office spaces and retail stores. The hotel is conveniently located with direct access to the Phayathai BTS Skytrain station and only 5 minutes walk from Airport Rail link Phayathai Station. With space for meetings and functions of all types and scales, the hotel provides elegant options for both personal and business events. Whether it be forging new bonds through formal dinners or strengthening old ones through annual parties, the hotel has the perfect venue for you.

**Target Opening Date :**  
19 May 2023

**Owner :**  
Kamkoong Property Co., Ltd.

**Hotel Management :**  
Absolute Hotel Services Co., Ltd.

**Managing Director:**  
John Westoby



Eastin Grand Hotel Phayathai has 494 modern and stylish guest rooms spanning 30 floors, consisting of eight different room types to suit everyone's diverse needs and styles. Unwind with modern amenities such as individually controlled air-conditioning, a flat-screen TV with satellite channels as well as complimentary wireless internet access. Our comfortable beds and luxury linens will ensure a great night's sleep every time.

# Guest Room Features

Room Type	Area (sqm.)	Rain Shower	Bathtub	Bed Type	Coffee/ Tea Making Facilities	In-Room Safety Deposit Box	LCD TV	IDD Telephone	In-Room Entertainment	Hairdryer
Superior Panorama Room	34	•	x	T/K	•	•	•	•	•	•
Deluxe Room	46-50	•	•	T/K	•	•	•	•	•	•
Premium Deluxe Room	46-50	•	•	T/K	•	•	•	•	•	•
One Bedroom Suite	53-56	•	x	K	•	•	•	•	•	•
Premium One Bedroom Suite	64	•	•	K	•	•	•	•	•	•
Two Bedroom Suite	85	•	•	T/K	•	•	•	•	•	•
Premium Two Bedroom Suite	102	•	•	T/K	•	•	•	•	•	•
Penthouse Suite	370	•	•	T/K	•	•	•	•	•	•



Eastin Grand Hotel Phayathai provides an array of over 15 fully equipped meeting rooms in various sizes.

The signature Phayathai Grand Ballroom is a dedicated high-tech grand ballroom with an 800-seat capacity for special gala events.

## Meeting Rooms

Function Room	Sqm	Width (m)	Length (m)	Height (m)	Classroom	Theatre	I Shape	U Shape	Hollow	Banquet	Reception
<b>3rd Floor</b>											
The Auditorium	-	-	-	-	-	98	-	-	-	-	-
<b>4th Floor</b>											
Chid Lom	80	6.3	12.5	3.8	45	70	30	36	40	40	60
Phloen Chit	80	6.3	12.5	3.8	45	70	30	36	40	40	60
Nana	85	6.3	12.5	3.8	45	70	30	36	40	60	60
Pre Function	120	3.8	32	4	-	-	-	-	-	-	-
Ekkamai	50	6.3	7.8	3.8	-	-	12	-	-	-	-
Ratchayothin	50	6.3	8	3.8	-	-	12	-	-	-	-
Bearing	55	6.3	8	3.8	-	-	-	-	12	-	-
Asok	75	6.3	12	3.8	45	70	24	36	40	40	60
Phrom Phong	75	6.3	11.6	3.8	36	60	24	30	36	40	60
Thong Lo	90	6.3	12	3.8	45	70	24	36	40	40	60
Pre Function	140	5.6	25	4	-	-	-	-	-	-	-
<b>6th Floor</b>											
Siam Hall	390	15.2	25.5	8.8	180	396	-	69	108	240	396
Pre Function	130	6.3	20.7	5	-	-	-	-	-	-	-
Phayathai Grand Ballroom	960	13.7	70.3	7.9	720	1,276	-	-	-	800	1,200
Pre Function	350	5	70	7.1	-	-	-	-	-	-	-
Phayathai 1	205	13.7	15	7.9	90	198	42	54	72	90	140
Phayathai 2	221	13.7	16.2	7.9	90	198	42	60	78	90	150
Phayathai 3	221	13.7	16.2	7.9	90	198	42	60	78	90	150
Phayathai 4	313	13.7	22.9	7.9	150	358	54	72	90	150	225
Ari	75	6.2	11.8	4.2	36	60	24	30	36	40	60
Sena	75	6.2	11.8	4.2	36	60	24	30	36	40	60
Mo Chit	75	6.2	11.8	4.2	36	60	24	30	36	40	60
Pre Function	210	5.5	39	4.2	-	-	-	-	-	-	-
<b>7th Floor</b>											
Garden Deck @7	440	14.1	31.1	-	-	200	-	-	-	-	300
Pre Function	75	11.7	6.2	4.5	-	-	-	-	-	-	-



# Restaurants

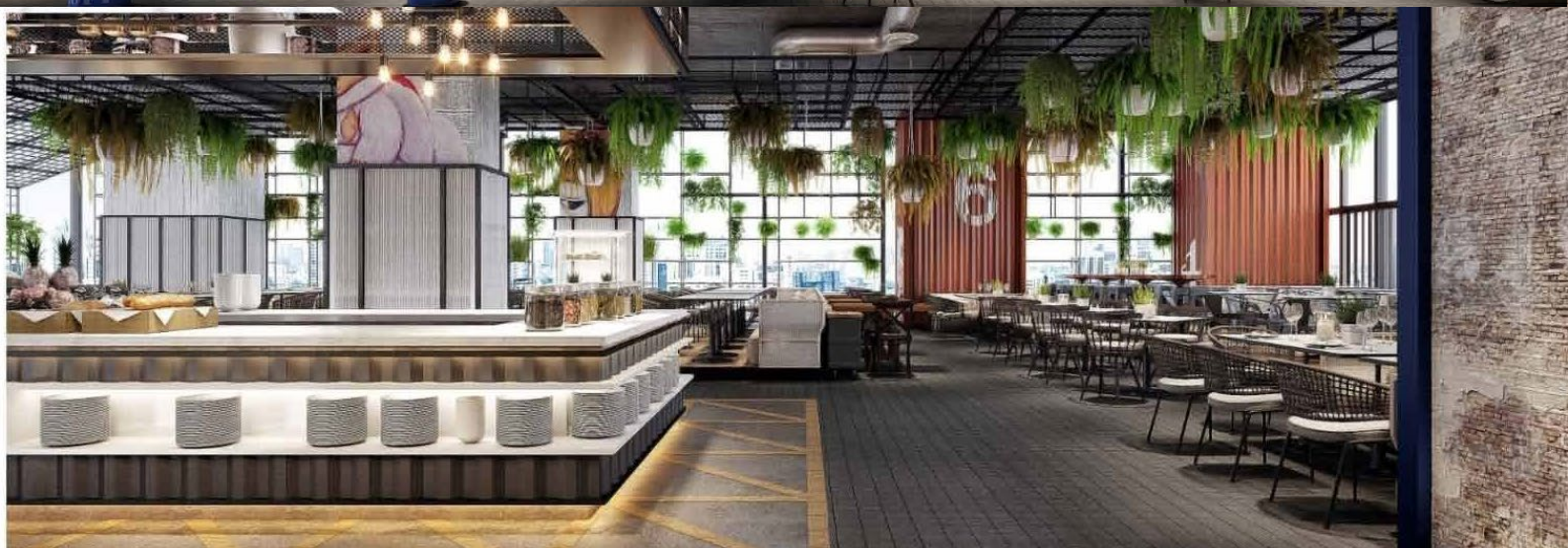
## THE MARKET@5

The Market@5 is inspired by street food style food trucks and features an eclectic choice of international cuisine focusing on the classic dishes of Thailand, Japan, The Middle East, India, and Mexico and European fare, including Italian and Scandinavian cuisine.

Throughout the day, market-style live stations will produce simple yet superlative quality food to delight and entertain diners, complemented by lavish beverage stations with an unsurpassed open wine selection.

### Opening Hours:

Open for breakfast, lunch and dinner





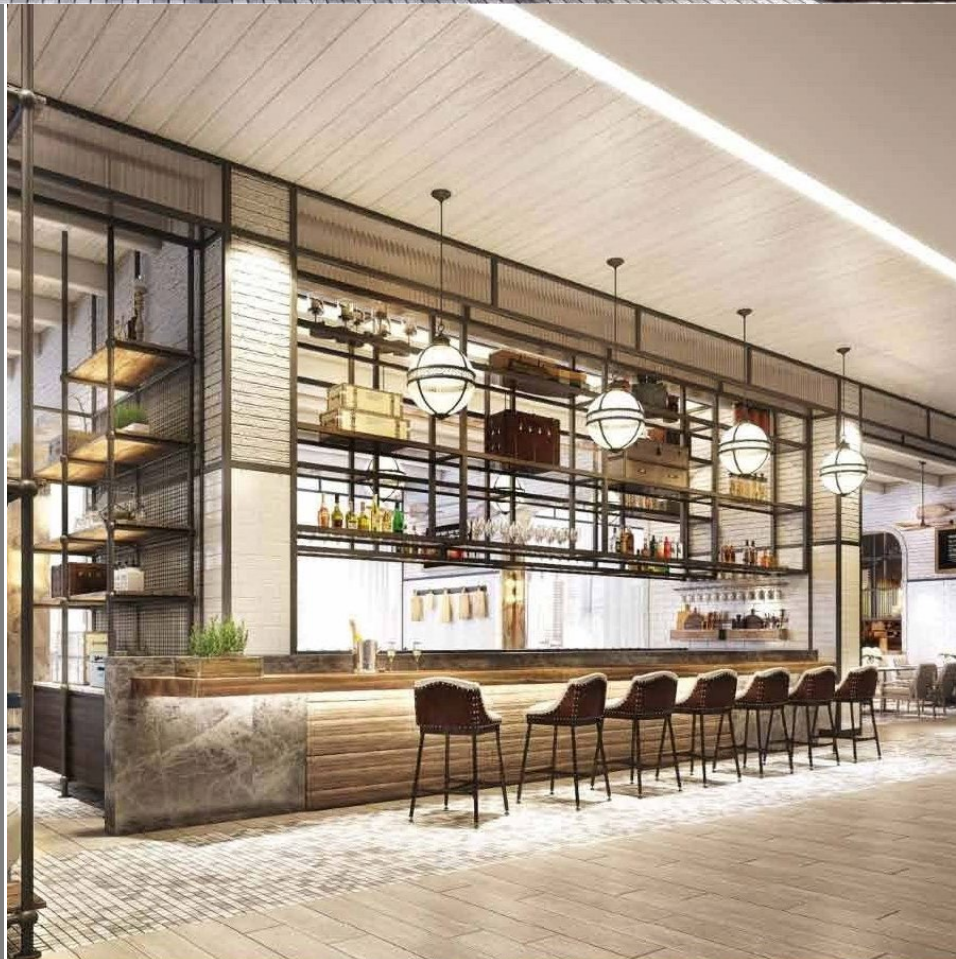
# Restaurants



## Trattoria@22

In a perfect setting beside the pool up on the 22nd floor, discover Mediterranean cuisine with a modern twist at Trattoria@22. Showcasing seasonal dishes with a menu guided by exceptional ingredients and the finest produce, enjoy the best of the Mediterranean in a stylish setting with an inviting atmosphere.

Opening Hours:  
Open for lunch and dinner







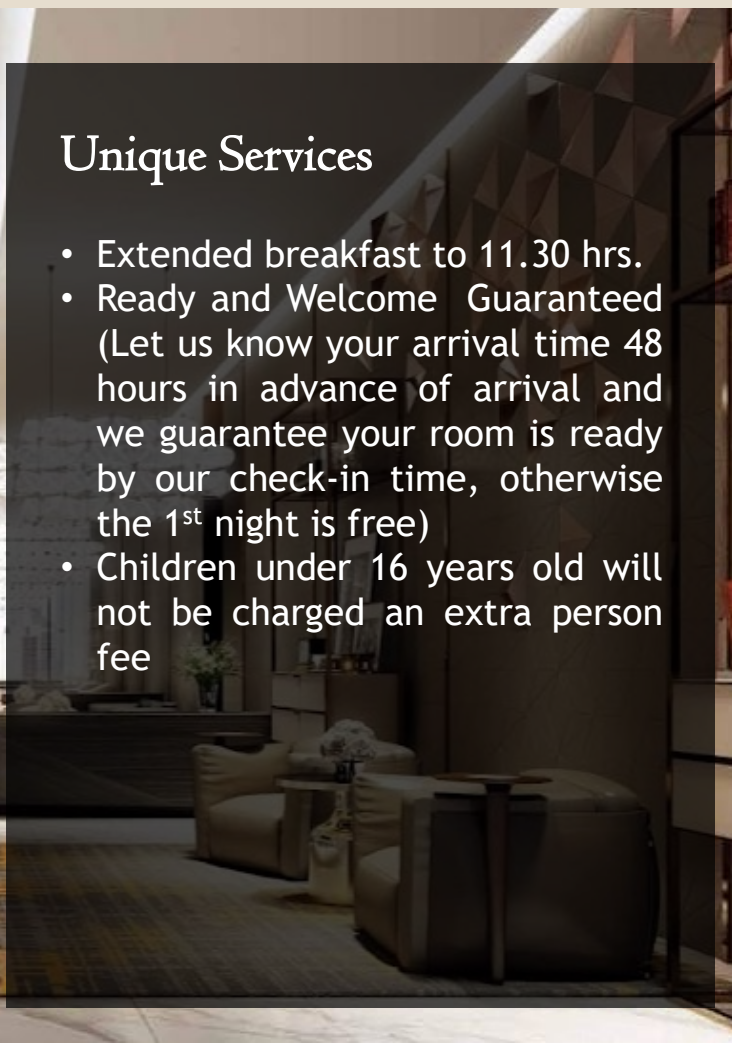
## Facilities & Services

- Fitness Centre
- 2 Outdoor swimming pools
- Spa
- Executive Lounge
- Wi-Fi internet access throughout the hotel
- Daily housekeeping service
- Laundry service
- Transportation service

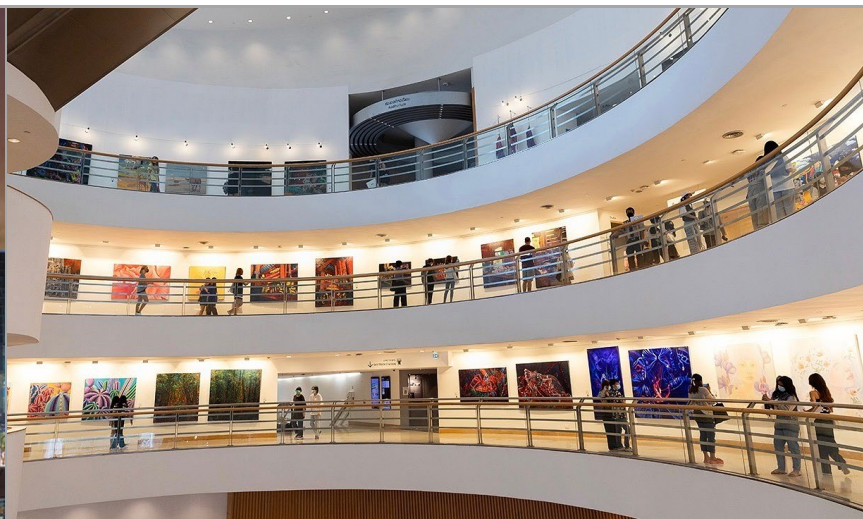
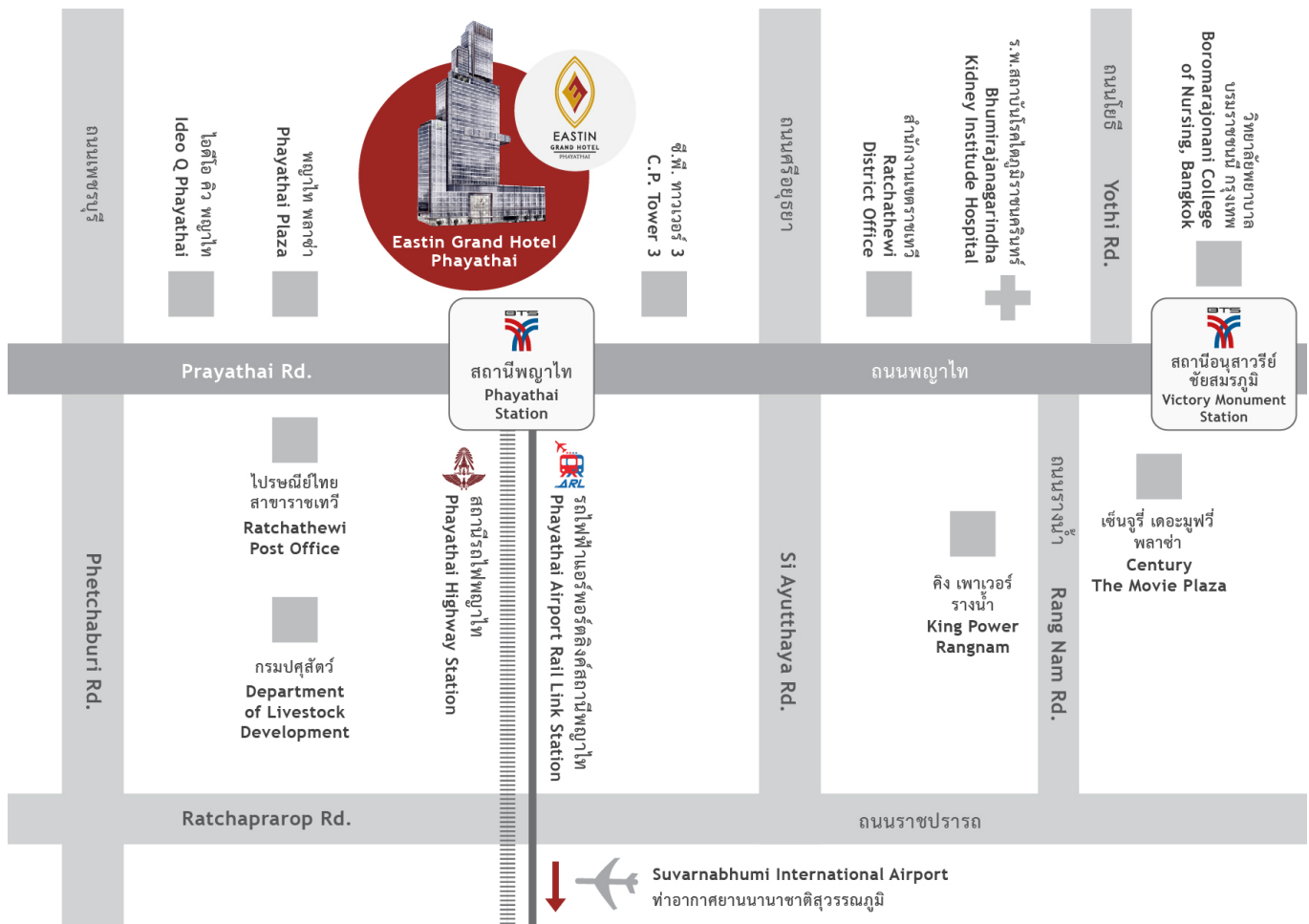


## Unique Services

- Extended breakfast to 11.30 hrs.
- Ready and Welcome Guaranteed (Let us know your arrival time 48 hours in advance of arrival and we guarantee your room is ready by our check-in time, otherwise the 1<sup>st</sup> night is free)
- Children under 16 years old will not be charged an extra person fee



# Location



- 27 km drive to Suvarnabhumi Airport
- 22.5 km drive to Don Mueang Airport
- Sky link to BTS Phayathai Station (exit 1)
- 200m walk to Airport Rail Link Phayathai Station (exit2)
- 2 BTS Stations to MBK Center
- 2 BTS Stations to Siam Paragon
- 2 BTS Stations to Bangkok Art and Culture Center
- 3 BTS Stations to Central Chid Lom and 5 mins walk to central world

## Eastin Grand Hotel Phayathai

18 Phaya Thai Rd, Thung Phaya Thai,  
Ratchathewi, Bangkok 10400 Thailand  
Tel: +6624832899

Email: [rsvn@eastingrandphayathai.com](mailto:rsvn@eastingrandphayathai.com)



Eastingrandphayathai