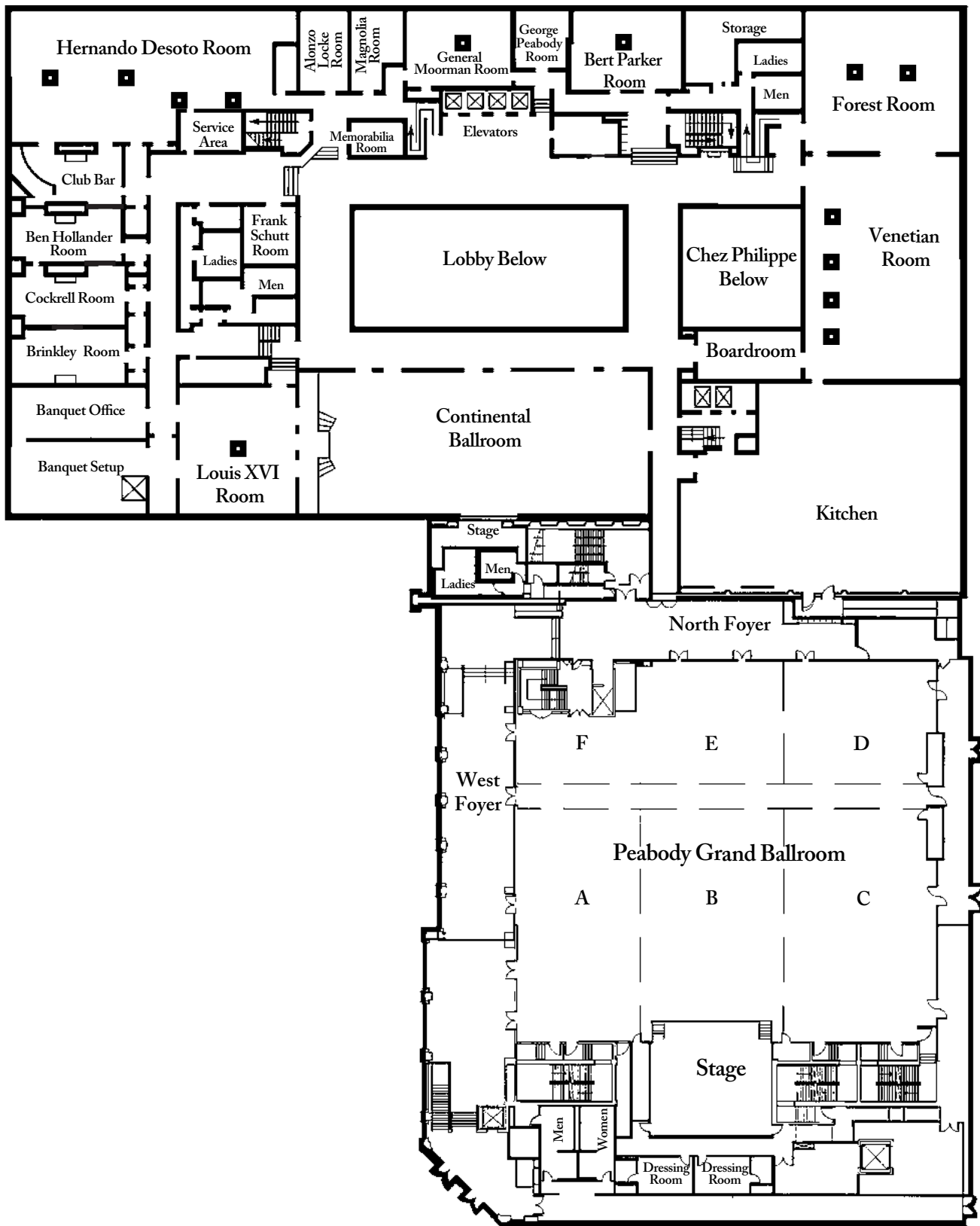


The Mezzanine Level



The Mezzanine Level

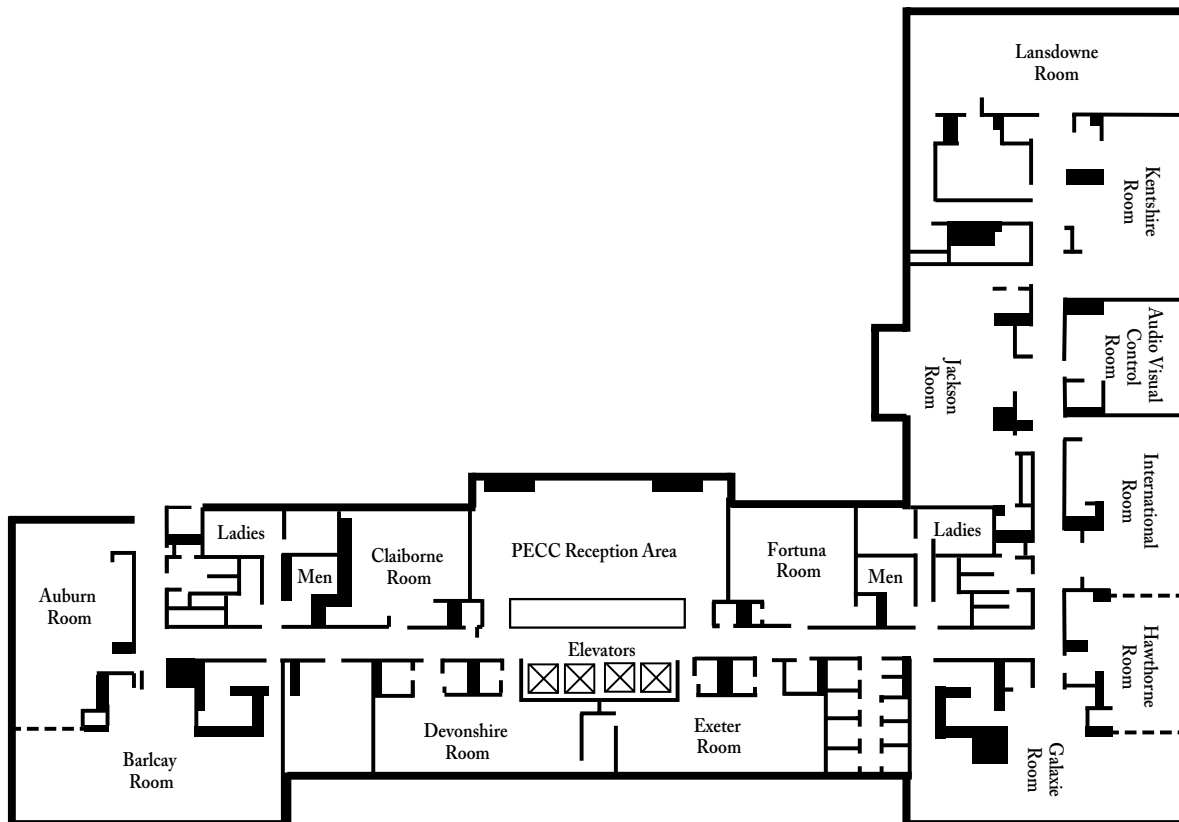
| Room | Dimensions | Square Footage | Ceiling Height | Banquet Rounds of 10 | Reception Style | Class Room ▲ | Theatre Style | Conf. Style | U-Shape | Booths 10x10 |
|------------------------|-------------|----------------|----------------|----------------------|-----------------|--------------|---------------|-------------|---------|--------------|
| Alonzo Locke | 26'x18' | 468 | 10' | 20 | 30 | 18 | 36 | 16 | 16 | N/A |
| Ben Hollander | 39'6"x18'6" | 730 | 11'6" | 30 | 40 | 24 | 50 | 25 | 26 | N/A |
| Bert Parker • | 36'6"x26' | 952 | 11' | 50 | 60 | 40 | 60 | 24 | 21 | N/A |
| The Board Room | 32'x15' | 480 | 12' | N/A | N/A | N/A | N/A | 22 | N/A | N/A |
| Brinkley Room | 39'6"x17' | 671 | 10' | 30 | 40 | 24 | 50 | 25 | 26 | N/A |
| Cockrell Room | 38'6"x18'6" | 712 | 10'6" | 30 | 40 | 24 | 50 | 25 | 26 | N/A |
| Continental Ballroom | 112'x47' | 5,264 | 19'8" | 350 | 700 | 240 | 600 | N/A | 70 | N/A |
| Forest Room • | 56'x44' | 2,264 | 15'9" | 120 | 200 | 70 | 150 | 40 | 32 | N/A |
| Frank Schutt | 20'x17' | 340 | 12' | 10 | 25 | 9 | 15 | 8 | 9 | N/A |
| General Moorman • | 34'x25' | 850 | 11' | 50 | 60 | 40 | 60 | 24 | 18 | N/A |
| George Peabody | 30'x18'6" | 372 | 10' | 20 | 25 | 12 | 25 | 15 | 15 | N/A |
| Hernando DeSoto • | 77'6"x41'6" | 3,228 | 11' | 170 | 250 | 70 | 150 | 40 | 30 | N/A |
| Louis XVI • | 36'x42' | 1,512 | 12' | 100 | 150 | 40 | 75 | 30 | 30 | N/A |
| Magnolia Room | 25'6"x18'6" | 476 | 16'1" | 20 | 20 | 9 | 16 | 10 | 10 | N/A |
| Peabody Grand Ballroom | 135'x125' | 16,264 | 15'5" | 1240 | 3000 | 600 | 2100 | N/A | N/A | 100 |
| Grand Ballroom A | 77'x41' | 3,144 | 15'5" | 210 | 470 | 135 | 300 | 50 | 50 | 24 |
| Grand Ballroom B | 77'x47' | 3,387 | 15'5" | 210 | 470 | 135 | 335 | 50 | 50 | 24 |
| Grand Ballroom C | 77'x47' | 3,834 | 15'5" | 210 | 470 | 144 | 335 | 50 | 50 | 24 |
| Grand Ballroom D | 39'x47' | 1,950 | 15'5" | 120 | 160 | 84 | 160 | 40 | 40 | 15 |
| Grand Ballroom E | 39'x47' | 1,875 | 15'5" | 120 | 160 | 84 | 160 | 40 | 40 | 15 |
| Grand Ballroom F | 21'x41' | 945 | 15'5" | 40 | 60 | 30 | 60 | 20 | 28 | 8 |
| Venetian Room • | 76'x45'6" | 4,256 | 15'9" | 220 | 350 | 120 | 300 | 50 | 50 | 26 |

▲ Classroom based on 3 persons per 8 ft. table • Columns in the room.

Peabody Executive Conference Center

| Room | Dimensions | Square Footage | Ceiling Height | Banquet Rounds of 10 | Reception Style | Class Room ▲ | Theatre Style | Conf. Style |
|---------------|------------|----------------|----------------|----------------------|-----------------|--------------|---------------|-------------|
| Auburn | 42'x16' | 672 | 9' | 40 | 75 | 26 | 50 | 30 |
| Barclay | 55'x17' | 935 | 9' | 50 | 100 | 32 | 60 | 40 |
| Claiborne | 25'x17' | 425 | 9' | N/A | N/A | N/A | N/A | 12 |
| Devonshire | 43'x16' | 688 | 9' | N/A | N/A | N/A | N/A | 10 |
| Exeter | 42'x16' | 672 | 9' | N/A | N/A | N/A | N/A | 10 |
| Fortuna | 25'x16' | 400 | 9' | N/A | N/A | N/A | N/A | 12 |
| Galaxie | 57'x16' | 912 | 9' | 50 | 100 | 32 | 60 | 40 |
| Hawthorne | 24'x14' | 336 | 9' | 20 | 35 | 12 | 30 | 12 |
| International | 39'x14' | 546 | 9' | 40 | 50 | 26 | 40 | 30 |
| Jackson | 49'x17' | 833 | 9' | 40 ♦ | 75 | 30 | 50 | N/A |
| Kentshire | 41'x15' | 615 | 9' | 30 | 50 | 20 | 40 | 30 |
| Lansdowne | 56'x20' | 1,129 | 9' | 50 | 100 | 32 | 60 | 40 |

▲ Classroom based on 2 persons per 6 ft. table ♦ Squares of 6

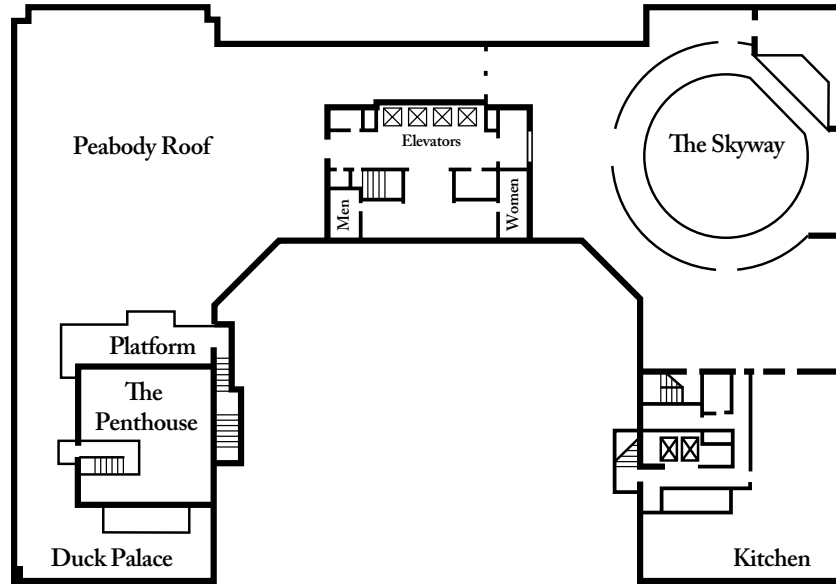


The Skyway

| Room | Dimensions | Square Footage | Ceiling Height | Banquet Rounds of 10 | Reception Style | Class Room ▲ | Theatre Style | Conf. Style | U-Shape | Booths 10x10 |
|------------|------------|----------------|----------------|----------------------|-----------------|--------------|---------------|-------------|---------|--------------|
| The Skyway | N/A | 7,600 | N/A | 400 | 700 | 100 | 220 | 40 | 40 | N/A |

▲ Classroom based on 2 persons per 6 ft. table

The Skyway and Rooftop



Tennessee Exhibit Hall

| Room | Dimensions | Square Footage | Ceiling Height | Banquet Rounds of 10 | Reception Style | Class Room ▲ | Theatre Style | Conf. Style | U-Shape | Booths 10x10 |
|--------------|------------|----------------|----------------|----------------------|-----------------|--------------|---------------|-------------|---------|--------------|
| Exhibit Hall | 124'x98' | 11,100 | 10'6" | 730 | 75 | 230 | 450 | N/A | N/A | 50 |

▲ Classroom based on 2 persons per 6 ft. table

