



FLEMINGS HOTELS

Flemings Hotel Frankfurt Main-Riverside
Lange Straße 5-9
60311 Frankfurt am Main



Contact

+49 69 219 30-0
Event sales: +49 69 37003-500
conference.fra@flemings-hotels.com
www.flemings-hotels.com



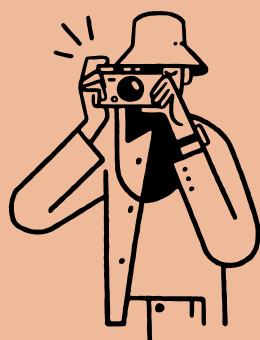
Mobility

45 parking spaces / 2 electric charging stations /
“Hospital zum heiligen Geist” tram stop close by



Distances

European Central Bank 0.7 km / city centre 1 km /
Römer (city hall) 1 km / Museumsufer 1.5 km /
motorway (A 661) 3 km / central train station 3 km /
exhibition and congress centre 4 km / Deutsche
Bank Park 6 km / airport 13 km



ENJOY YOUR STAY IN FRANKFURT!

Rooms

145 rooms and 4 suites / extra comfortable box-spring bed /
soundproofed windows / individually adjustable air-conditioning /
free bottle of mineral water / coffee and tea station / free
high-speed WiFi / safe / flat-screen TV with radio / comfortable
work corner with desk / glass and granite bathroom / high-
quality Malin+Goetz skincare products / laundry service and
ironing board in room (upon request) / non-smoking rooms
only / accessible rooms / hypo-allergenic rooms with environ-
mentally friendly, non-toxic materials / some rooms with
skyline view / 1 suite with sunroom and balcony

Cuisine

Hearty, regional breakfast buffet / restaurant with show kitchen /
bar / lounge area

Fitness & wellness

Dry sauna / steam bath / relaxation area / gym area with TVs /
jogging routes



Technical equipment

With modern Jabra-PanaCast video
conferencing technology, you can host high-
quality hybrid meetings

State-of-the-art conference technology such
as ClickShare systems for easy presentation
sharing / WiFi / projectors / screens / cameras
and other technical equipment also provided



Service

Exclusive meetings concierge at your
disposal for the duration of your stay / in-room
dining if desired / greatly enhanced corona
safety concept, the Flemings Feel Safe Promise

Function rooms	Floor	Height	Surface area	Natural light	Classroom seating plan	Theatre	Banquet	Reception	U-shaped	Conference style
Room 1	6	3.50 m	64 m ²	yes	30 (14)*	60 (20)*	30	80	20 (10)*	24 (12)*
Room 2	6	3.50 m	60 m ²	yes	30 (15)*	60 (25)*	30	80	20 (10)*	24 (12)*
Room 3	6	3.50 m	58 m ²	yes	30 (15)*	60 (25)*	30	70	20 (10)*	24 (12)*
Room 1+2	6	3.50 m	123 m ²	yes	60 (-)*	120 (-)*	60	160	40 (-)*	48 (-)*
Room 4 (1-3)	6	3.50 m	182 m ²	yes	120 (50)*	200 (70)*	120	200	40 (25)*	-
Sunroom	6	2.70 m	49 m ²	yes	-	-	-	15	-	7 (3)*
Room 6	6	3.50 m	25 m ²	yes	12 (-)*	25 (-)*	10	25	-	10 (4)*
Room 7	6	3.50 m	33 m ²	yes	12 (-)*	25 (-)*	10	25	-	10 (4)*
Room 8 (6+7)	6	3.50 m	58 m ²	yes	24 (13)*	50 (18)*	40	60	16 (10)*	18 (12)*
Room 9	6	3.50 m	38 m ²	yes	-	-	-	-	-	16 (7)*

*socially distanced seating plan