



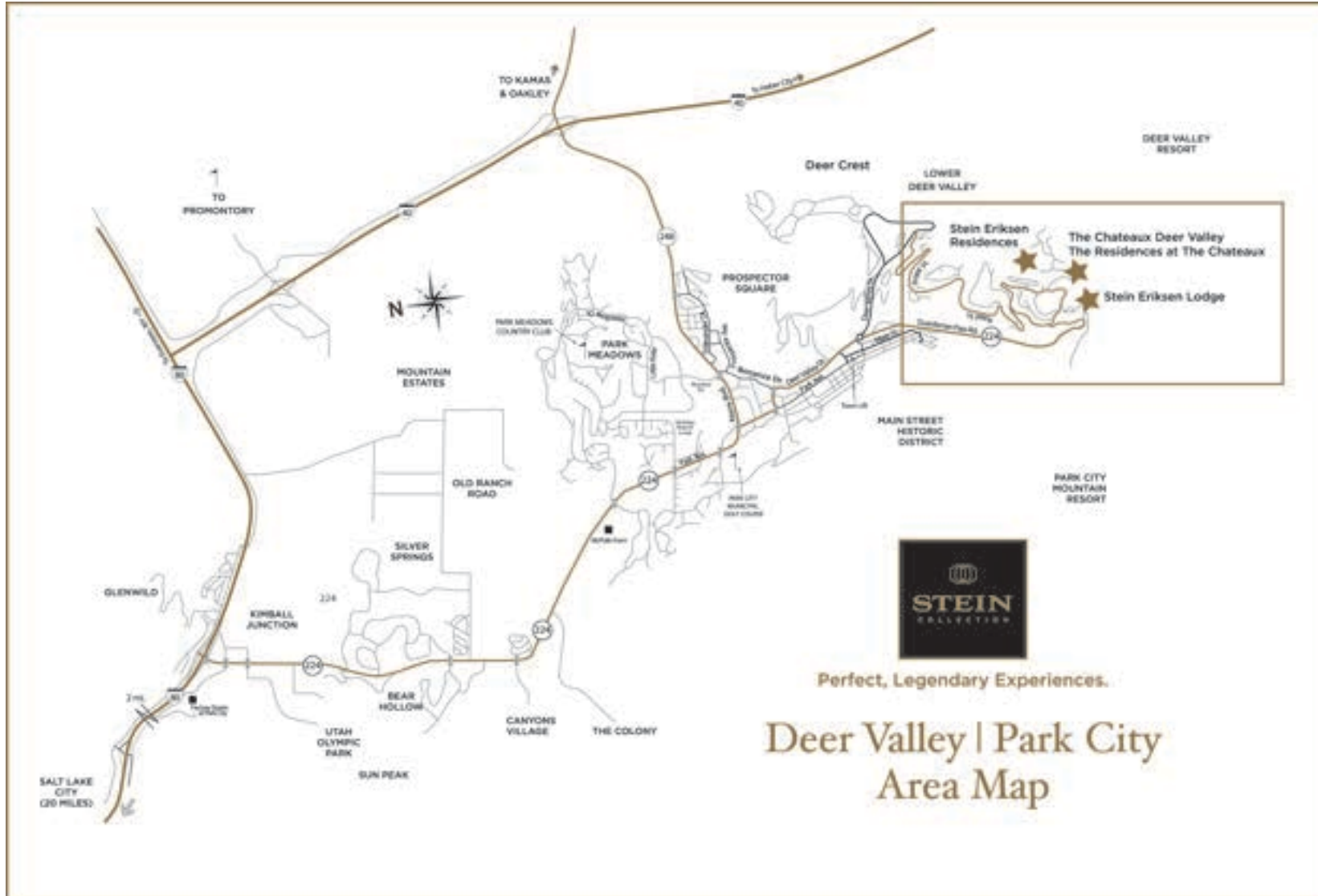


The Chateaux Deer Valley





Deer Valley 45 Minutes from the Salt Lake City International Airport



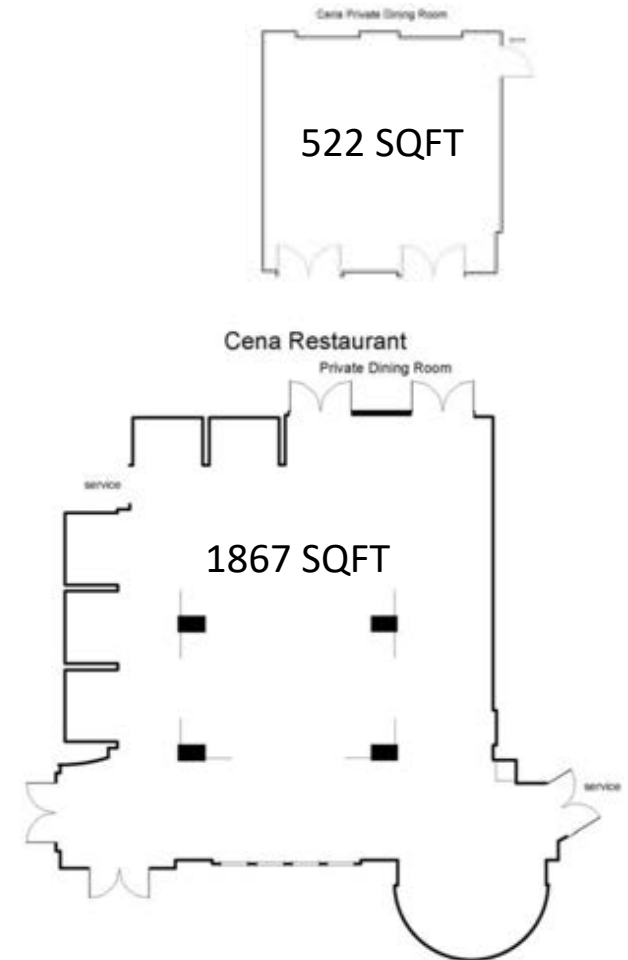
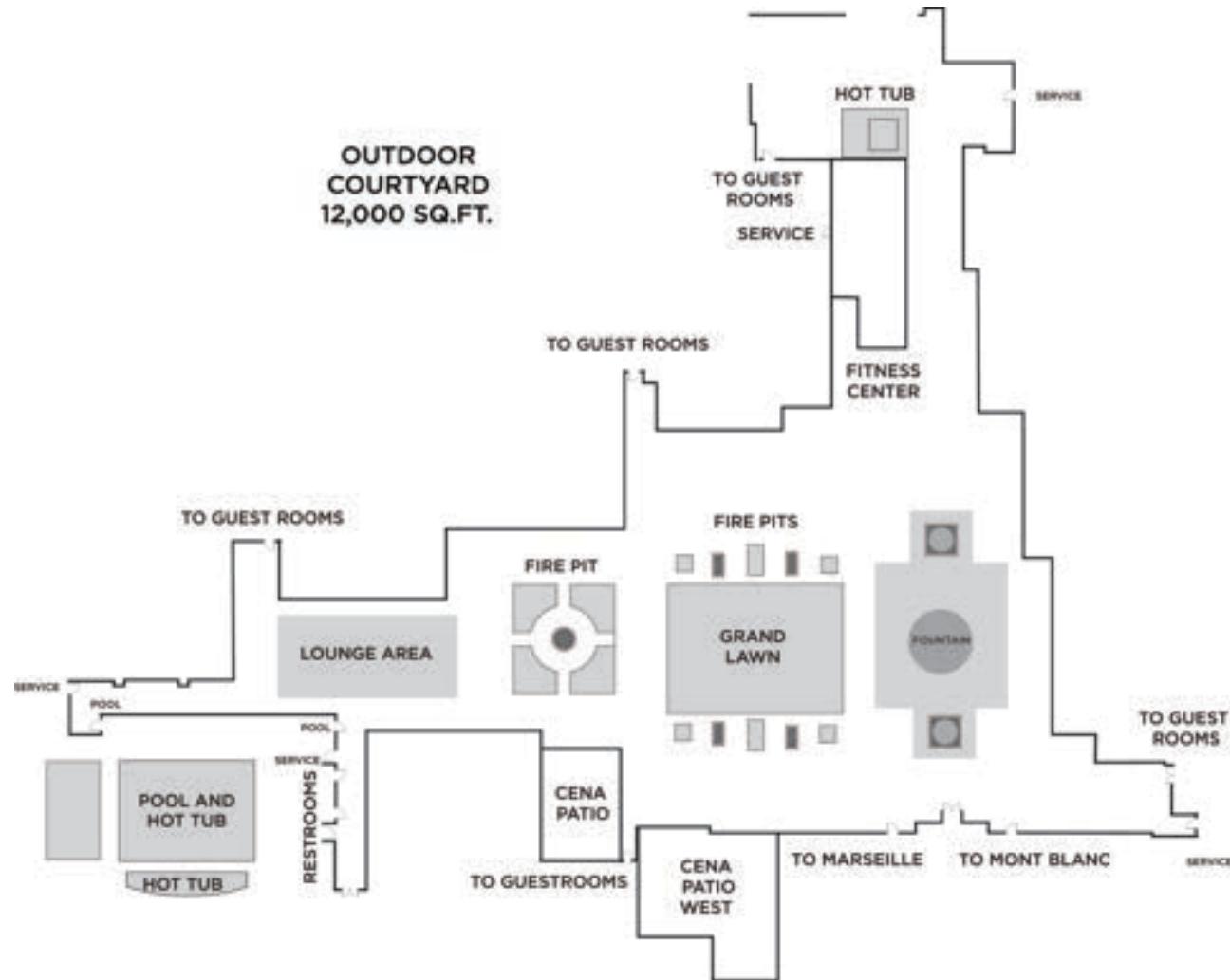


Located Mid-Mountain at Deer Valley Resort





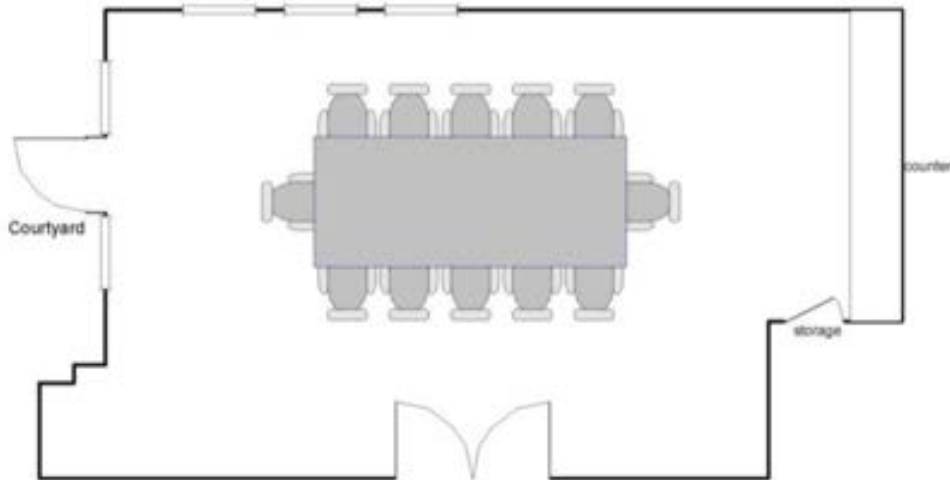
Event Space Floorplans





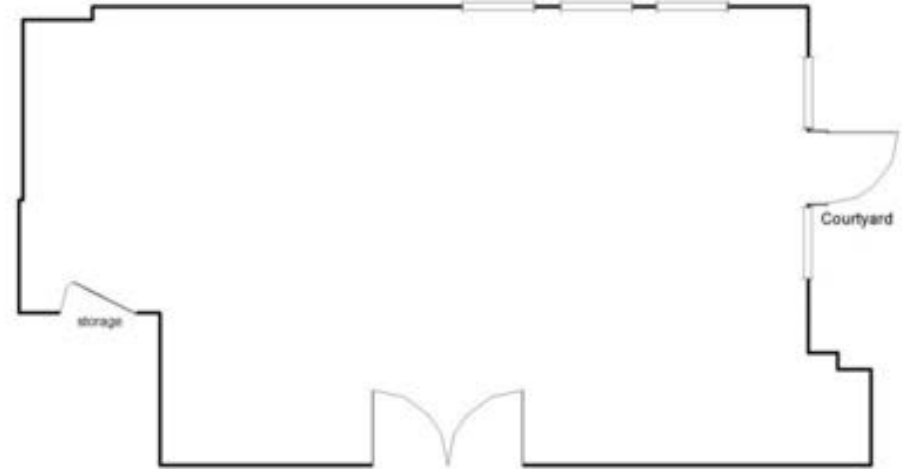
Event Space Floorplans

Mont Blanc



522 SQFT

Marseille



522 SQFT



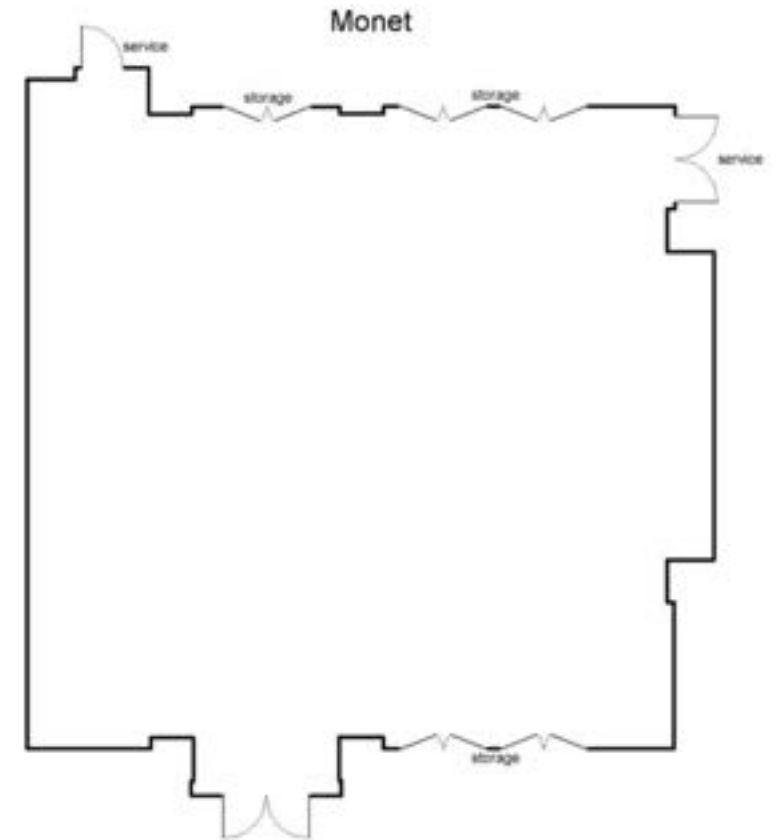
Event Space Charts

| Space | Dimensions | Square Feet | Height at High Point (feet) | Reception | Theater | Banquet Rounds | Classroom | Hollow Square | U-Shape | Exhibit Tables |
|-------------------------------|-----------------|---------------|-----------------------------|----------------------|------------|----------------|------------|---------------|------------|----------------|
| IMPRESSIONIST BALLROOM | 47 x 141 | 6,627 | 11 | 700 | 660 | 516 | 384 | n/a | n/a | 70 |
| Monet | 46 x 47 | 2,161 | 11 | 220 | 200 | 156 | 112 | 56 | 40 | 22 |
| Renoir | 54 x 47 | 2,538 | 11 | 250 | 220 | 192 | 160 | 52 | 64 | 24 |
| Degas | 41 x 47 | 1,927 | 11 | 190 | 170 | 144 | 80 | 48 | 36 | 16 |
| EVENT ROOMS | | | | | | | | | | |
| Courchevel | 25 x 26 | 650 | 8 | 40 | 40 | 36 | 32 | 32 | 24 | 7 |
| Mt. Blanc Boardroom | 18 x 29 | 522 | 8 | 12 people conference | | | | | | |
| Marseille | 18 x 29 | 522 | 8 | 40 | 40 | 36 | 20 | 24 | 20 | 6 |
| CENA RISTORANTE | 53 x 50 | 1,867 | 8 | 200 | 50 | 100 | 30 | 32 | 28 | n/a |
| Private Dining Room | 23 x 22 | 513 | 8 | 44 | 40 | 36 | 24 | 24 | 20 | n/a |
| Suites | | 800 | | 30 | n/a | n/a | n/a | 10 | 10 | n/a |
| OUTDOOR COURTYARD | | 12,000 | n/a | 3,000 | n/a | 1,200 | n/a | n/a | n/a | n/a |



Monet

Floor Plan Details

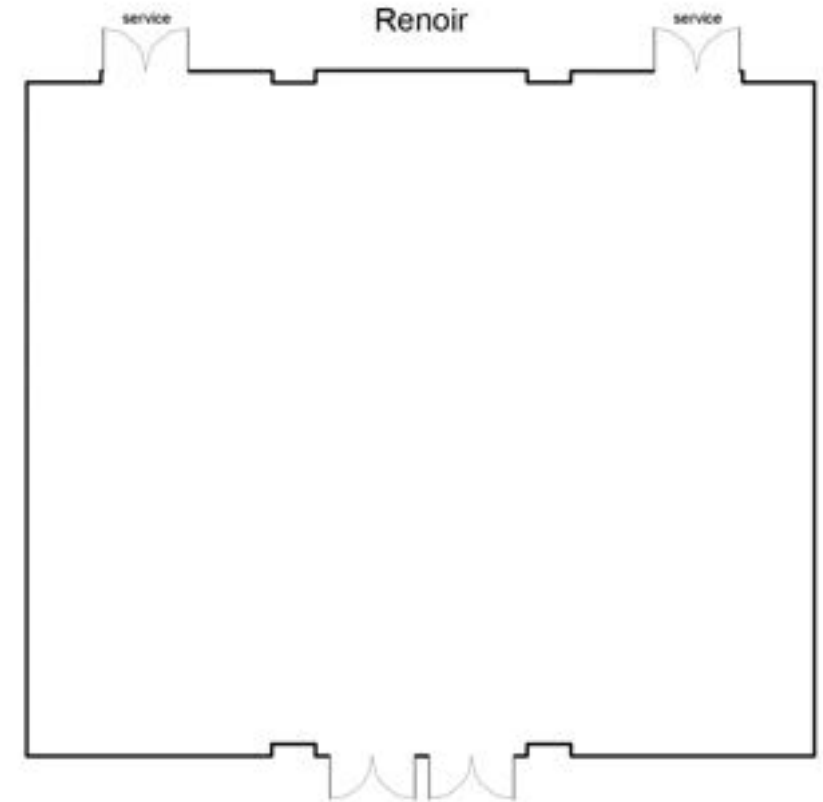


| Dimensions | Square Feet | Height at High Point (feet) | Reception | Theater | Banquet Rounds | Classroom | Hollow Square | U-Shape | Exhibit Tables |
|------------|-------------|-----------------------------|-----------|---------|----------------|-----------|---------------|---------|----------------|
| 46 x 47 | 2161 | 11 | 220 | 200 | 156 | 112 | 56 | 40 | 22 |



Renoir

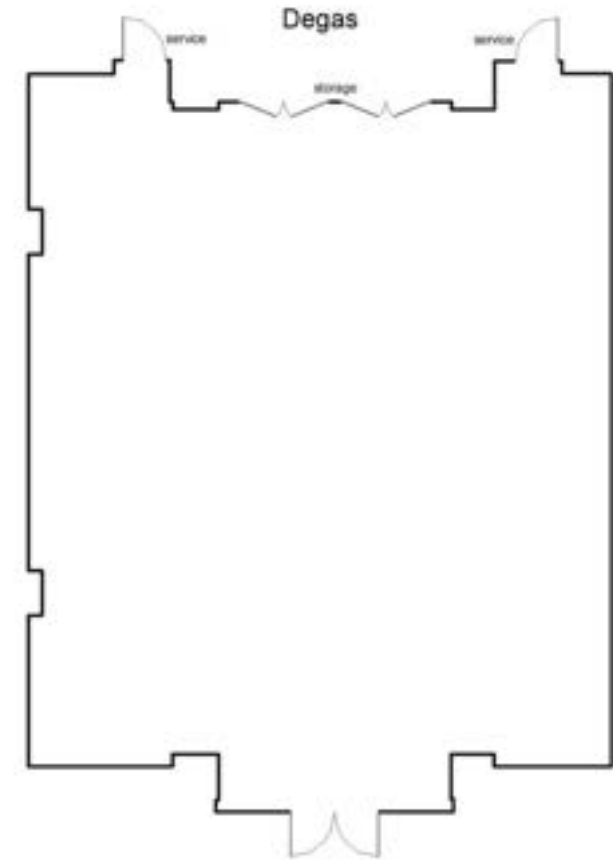
Floor Plan Details



| Dimensions | Square Feet | Height at High Point (feet) | Reception | Theater | Banquet Rounds | Classroom | Hollow Square | U-Shape | Exhibit Tables |
|------------|-------------|-----------------------------|-----------|---------|----------------|-----------|---------------|---------|----------------|
| 54 x 47 | 2538 | 11 | 250 | 220 | 129 | 160 | 52 | 64 | 24 |

Degas

Floor Plan Details



| Dimensions | Square Feet | Height at High Point (feet) | Reception | Theater | Banquet Rounds | Classroom | Hollow Square | U-Shape | Exhibit Tables |
|------------|-------------|-----------------------------|-----------|---------|----------------|-----------|---------------|---------|----------------|
| 41 x 47 | 1927 | 11 | 190 | 170 | 144 | 80 | 48 | 36 | 16 |

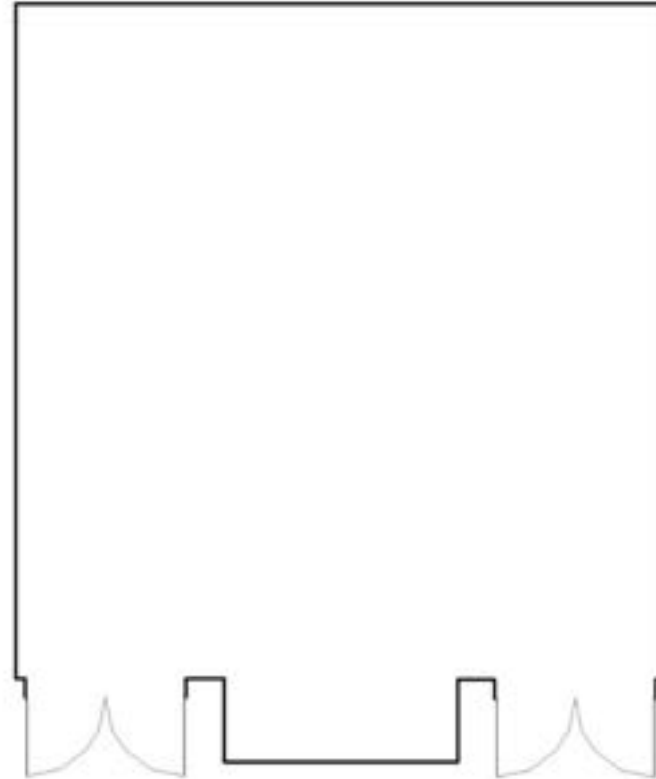


Courchevel

Floor Plan Details



Courchevel

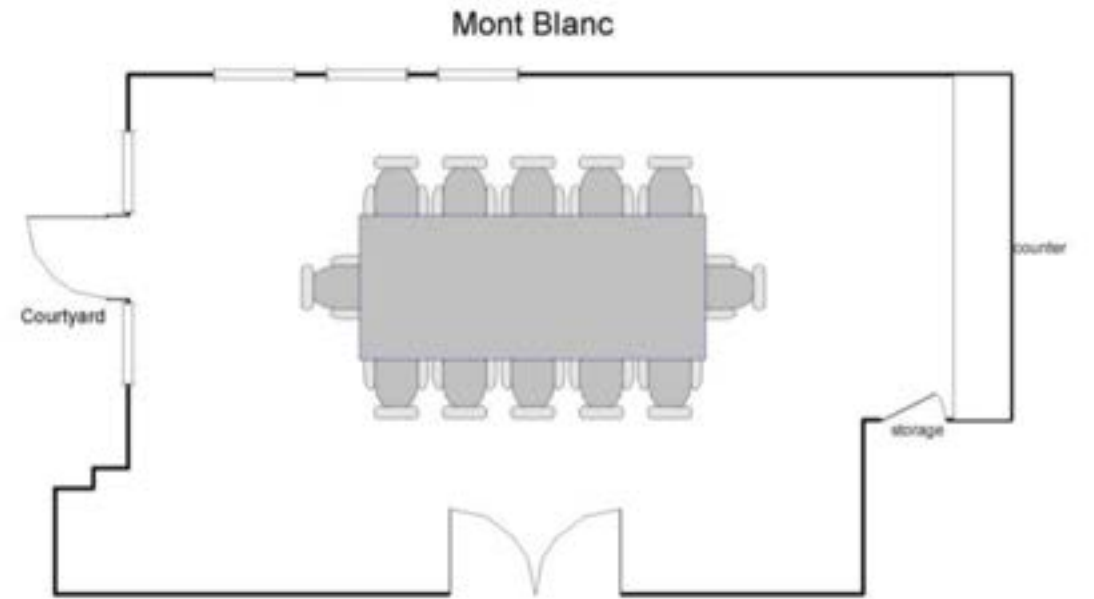


| Dimensions | Square Feet | Height at High Point (feet) | Reception | Theater | Banquet Rounds | Classroom | Hollow Square | U-Shape | Exhibit Tables |
|------------|-------------|-----------------------------|-----------|---------|----------------|-----------|---------------|---------|----------------|
| 25 x 26 | 650 | 8 | 40 | 40 | 36 | 32 | 32 | 24 | 7 |



Mt. Blanc

Floor Plan Details

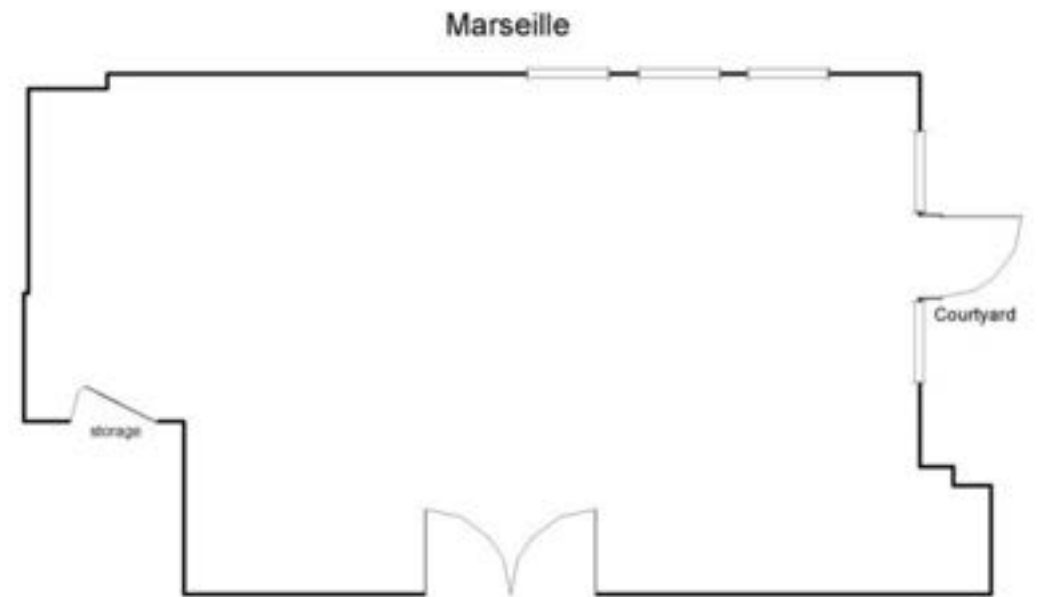


| Dimensions | Square Feet | Height at High Point (feet) | Reception | Theater | Banquet Rounds | Classroom | Hollow Square | U-Shape | Exhibit Tables |
|----------------------|-------------|-----------------------------|-----------|---------|----------------|-----------|---------------|---------|----------------|
| 18 x 29 | 522 | 8 | | | | | | | |
| 12 People Conference | | | | | | | | | |



Marseille

Floor Plan Details

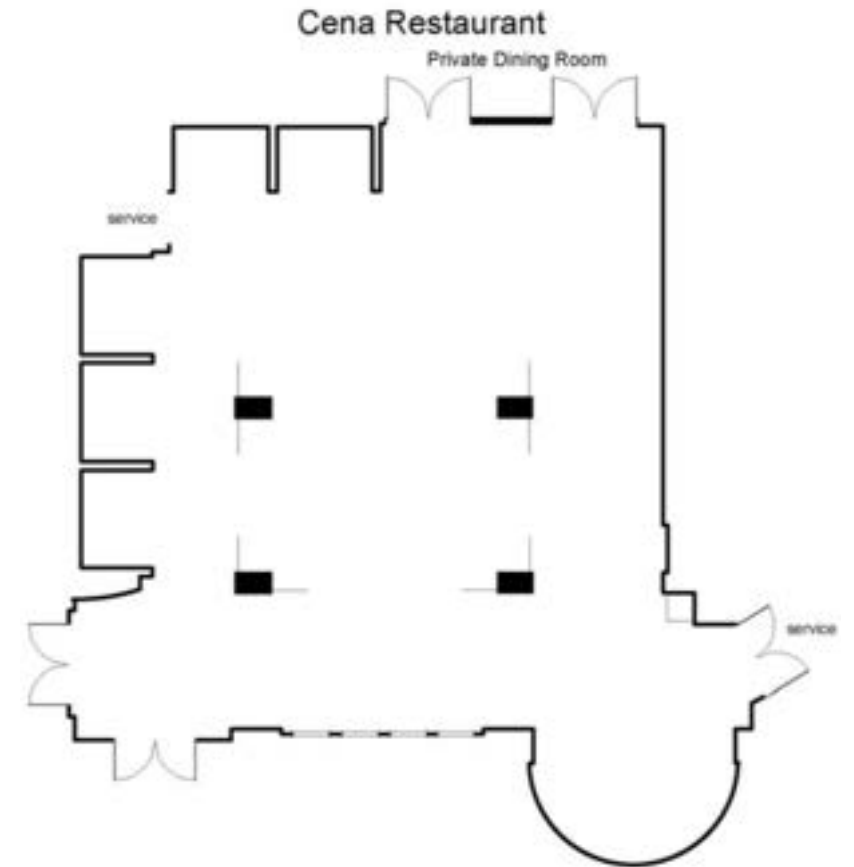


| Dimensions | Square Feet | Height at High Point (feet) | Reception | Theater | Banquet Rounds | Classroom | Hollow Square | U-Shape | Exhibit Tables |
|------------|-------------|-----------------------------|-----------|---------|----------------|-----------|---------------|---------|----------------|
| 18 x 29 | 522 | 8 | 40 | 40 | 36 | 20 | 24 | 20 | 6 |



Cena Restaurant

Floor Plan Details



| Dimensions | Square Feet | Height at High Point (feet) | Reception | Theater | Banquet Rounds | Classroom | Hollow Square | U-Shape | Exhibit Tables |
|------------|-------------|-----------------------------|-----------|---------|----------------|-----------|---------------|---------|----------------|
| 53 x 50 | 1867 | 8 | 200 | 50 | 100 | 30 | 32 | 28 | N/A |

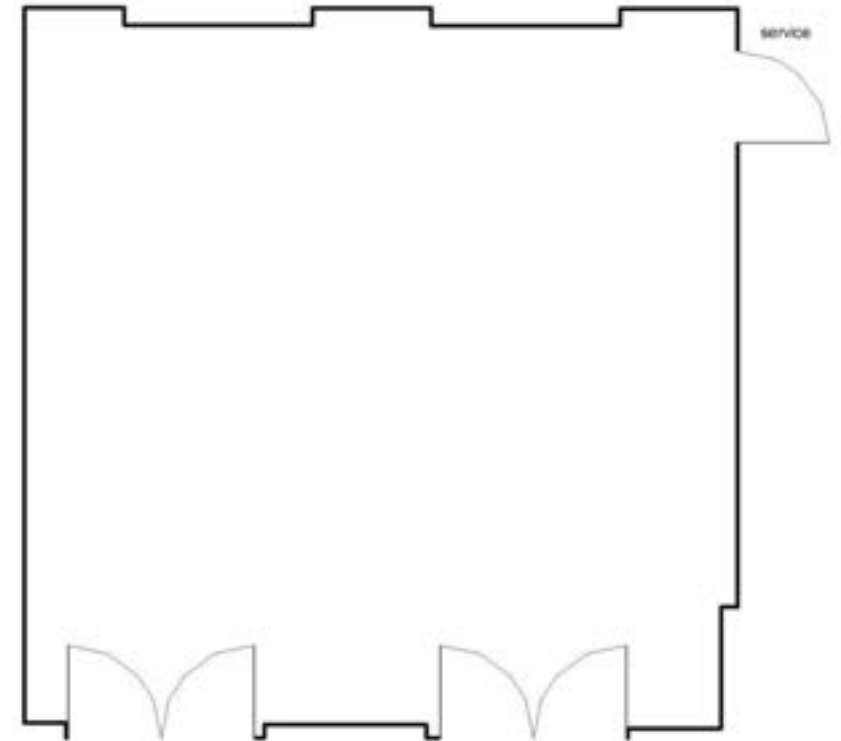


Cena Private Dining Room

Floor Plan Details



Cena Private Dining Room



| Dimensions | Square Feet | Height at High Point (feet) | Reception | Theater | Banquet Rounds | Classroom | Hollow Square | U-Shape | Exhibit Tables |
|------------|-------------|-----------------------------|-----------|---------|----------------|-----------|---------------|---------|----------------|
| 18 x 29 | 522 | 8 | 40 | 40 | 36 | 20 | 24 | 20 | 6 |

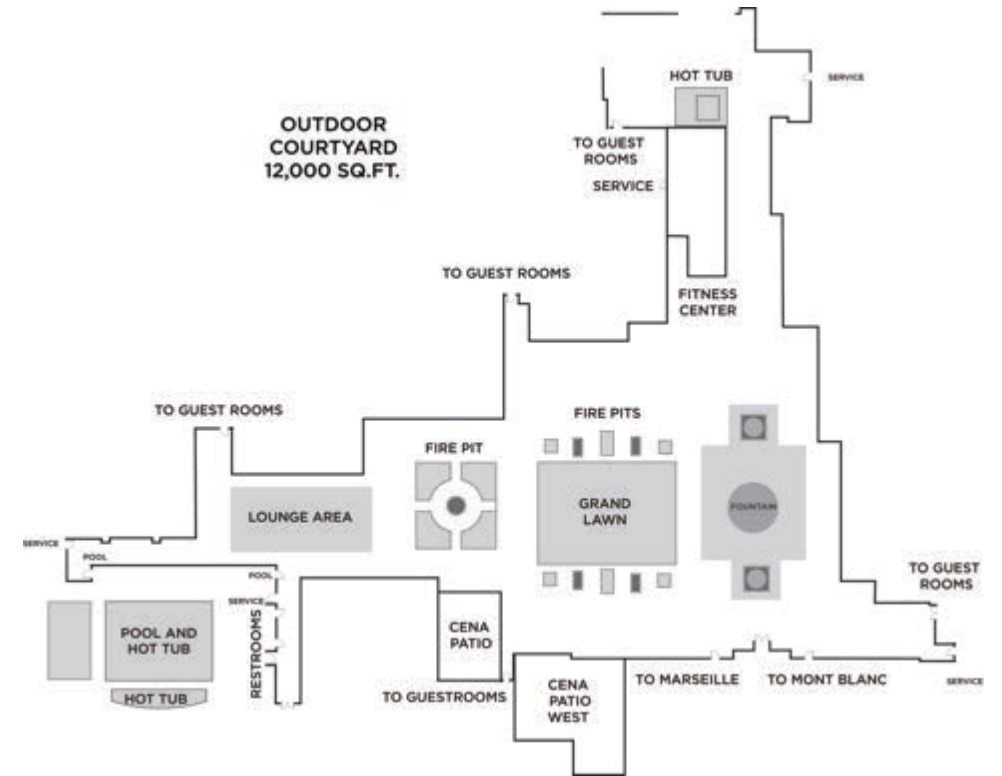


Outdoor Courtyard





Outdoor Courtyard



| Dimensions | Square Feet | Height at High Point (feet) | Reception | Theater | Banquet Rounds | Classroom | Hollow Square | U-Shape | Exhibit Tables |
|------------|-------------|-----------------------------|-----------|---------|----------------|-----------|---------------|---------|----------------|
| | 1200 | N/A | 3000 | 40 | 36 | 24 | 24 | 20 | N/A |



Ballroom-Classroom Style





Ballroom Classroom Style





Ballroom Rounds Style





Ballroom U-Shape Style





Ballroom Foyer





Luxe European Common Areas



Cena Lounge





Award Winning Service





An Array of Hotel Room Styles Including Studios





Hotel Room with Two Queen Beds





Hotel Room with One King Bed





Hotel Single Room Suite with One Bedroom





Hotel Suites with Full Kitchens





Hot Tubs & Heated Pool

Perfect Après Soak and Mountain Gazing





Summer Activities



Summer Activities





Winter Activities



Winter Activities



Main Street Park City



