

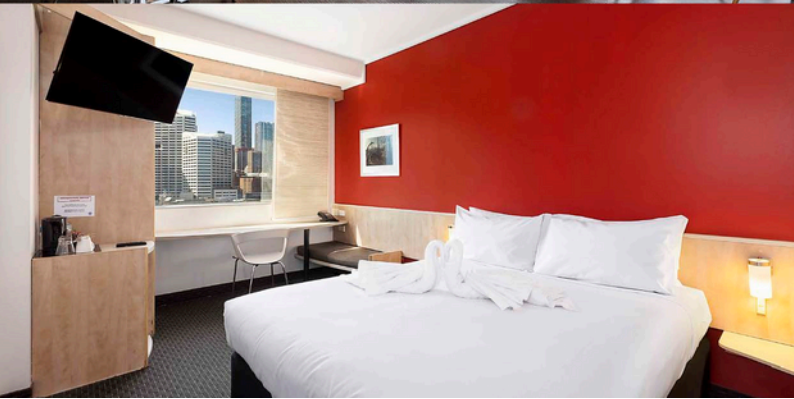


LET'S GET IT

STARTED

ibis Sydney Darling Harbour

.....
**WELL BEING
AT THE BEST PRICE**



Iconic Location

Located just 10K's and a 20 minute drive from Sydney Airport, right in the heart of Darling Harbour, adjacent to the International Convention Centre and surrounded by Sydney's most popular entertainment and shopping precincts with the best of city being right on your doorstep.

ibis Kitchen, iBar & Deck

Relax in our inviting indoor-outdoor space while enjoying a refreshing beverage and a casual bite to eat. The dinner menu features classic favourites, great value specials, and something for everyone - perfect for unwinding after a day in the city.

Cozy Rooms, Many Facing Darling Harbour

Known for well-designed comfort, each room features the signature Sweet Bed by ibis for a great night's rest. Choose a Superior Room for added space and an outlook facing the Darling Harbour side or the vibrant Sydney city skyline.



Walking to the International Convention Centre (ICC Sydney)

ICC Sydney can be accessed via the Novotel car park, exit and walk to the Novotel. Follow the signs to the Convention Light Rail station, take the elevator to the ground level, cross the light rail platform, and the ICC will be directly in front of you.

Breakfast

Start your day with a hearty breakfast at ibis Kitchen! Enjoy a buffet of warm breakfast dishes, fresh local produce, pastries, and more to fuel your morning. Hours: Monday to Friday: 6:30 am - 10:00 am Saturday, Sunday, and Public Holidays: 6:30 am - 10:30 am

Walk-in guests are welcome.

Hotel Facilities

- Premium WiFi
- 100% non-smoking
- Dry cleaning and same day laundry
- Accessible guest rooms with One Queen Size Bed and views over Pyrmont (please request when booking)
- Foxtel channels including: Sky News, CNN, Fox Sports, 1, 2 and 3, Fox 8 and Nickelodeon

Undercover Car Parking

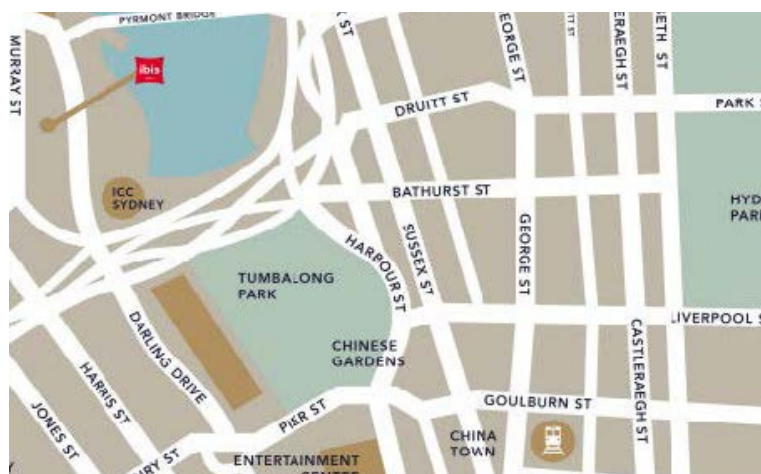
Parking is available on a first-come, first-served basis at

Novotel Sydney on Darling Harbour. Rates are \$65 for a 24-hour pass with unlimited entry.

Hourly Rates (Sunday 6 am to Friday 6 pm):
Up to 1 hour: \$19; 1 to 2 hours: \$35; 2 to 3 hours: \$45
Parking Heights: North side (closest to ibis): 1.9m;
South side (near convention centre): 2.2m

Access & Travel Information

- Easily accessible by plane, car, train or light rail
- By plane: Sydney Kingsford Smith Airport 10KM
- By car: Pacific Highway 2KM
- By train: Central Railway Station 1.8KM'
- By light rail: Convention Station 280M



ibis Sydney Darling Harbour
70 Murray Street, Sydney, 2000
+61 (02) 9563 0888 | H1757@accor.com

ibisdarlingharbour.com.au

