

The background of the image is a room with a large, ornate painting on the wall. The painting depicts a scene with three figures: a woman in a yellow dress, a woman in a white dress, and a man in a brown coat playing a lute. The room has a wooden floor and a blue wall with gold trim. In the foreground, there are several clothing racks with various garments, including a large black dress and a patterned skirt. The text 'Schlosshotel' is overlaid in a large, white, serif font, and 'BERLIN' is in a smaller, white, sans-serif font below it.

Schlosshotel

B E R L I N

A leading design boutique hotel in the heart of Grunewald, Berlin. A home for lovers of fashion and design.

Join us for iconic stays, curated for lasting memories.

www.schlosshotelberlin.com

+49 (0) 30 895 84 422

events@schlosshotelberlin.com



About Us

Introduction to the Hotel.

Exclusive events and inspiring meetings add a special touch to your occasion – whether it's an elegant wedding, a private dinner with business partners, or a productive meeting.

Schlosshotel Berlin provides a sophisticated setting for exceptional events, from creative panels in our luxurious libraries to impressive product presentations. Premium catering and a private atmosphere ensure an unforgettable experience.



Your hub of inspiration.

Where sophistication and creativity comes together.

Packages

Curated arrangements for refined events.

Conference packages for groups starting from 10 participants.

Half-Day Package (a maximum duration of 4 hours — lunch included)

- Modern conference equipment: projector, screen or TV, flipchart
- Premium writing materials
- Complimentary high-speed Wi-Fi
- Unlimited mineral water, filter coffee, tea & juices in the conference room
- 2-course business lunch curated by the head chef incl. 1 soft drink per person
- One coffee break with a selection of fine specialties

€115 per person

Full-Day Package (starting from 5 hours — lunch included)

- Modern conference equipment: projector, screen or TV, flipchart
- Premium writing materials
- Complimentary high-speed Wi-Fi
- Unlimited mineral water, filter coffee, tea & juices in the conference room
- 2-course business lunch curated by the head chef incl. 1 soft drink per person
- Two coffee breaks with a selection of fine specialties

€145 per person

Add-ons

Refined Extras for Exceptional Gatherings.

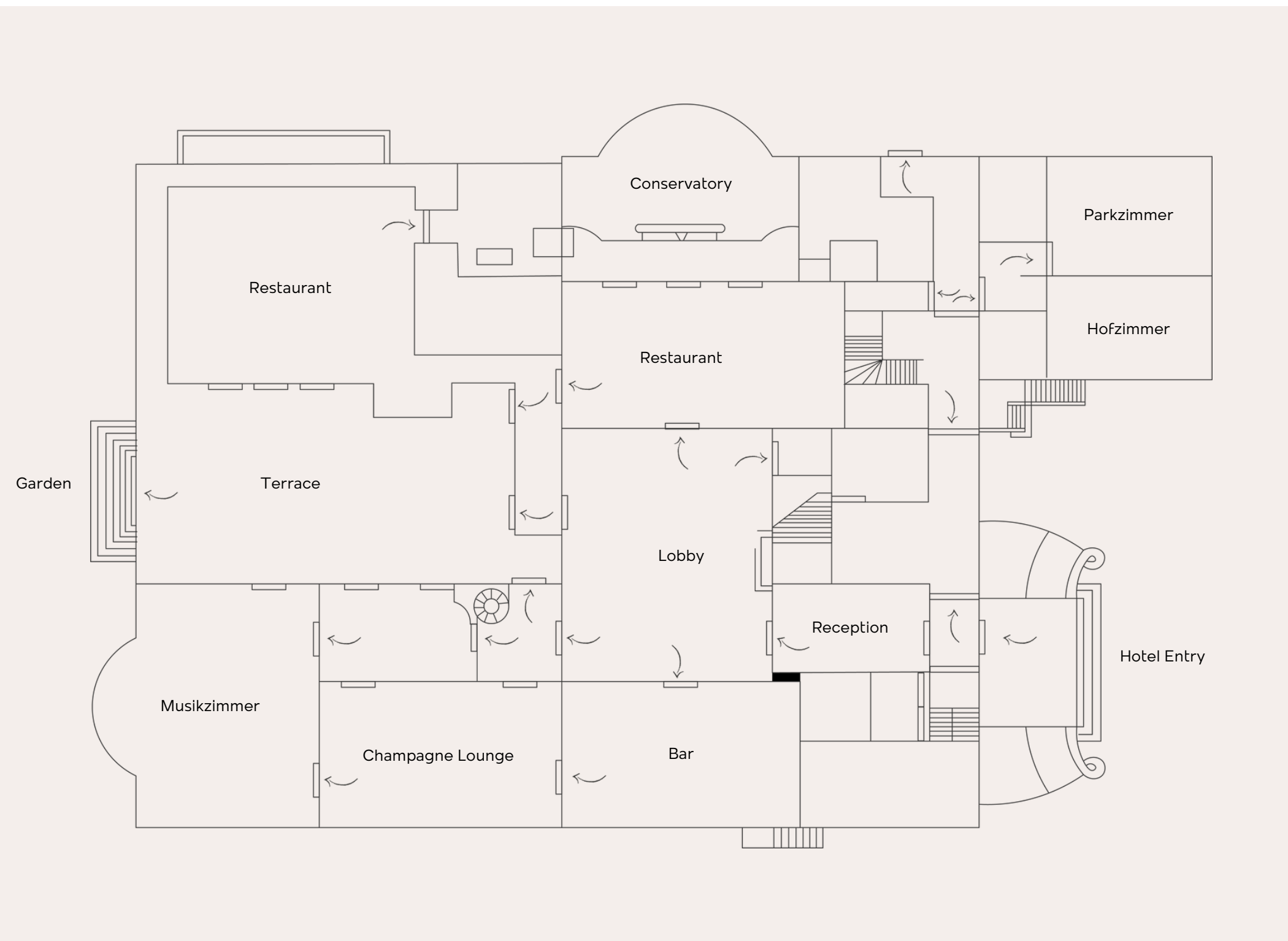
Conference Catering (price per person)

- Soft drinks (unlimited in the conference room) €15
- Fruit basket €7,5
- Sandwiches €6
- Wraps €6
- Exclusive coffee machine in the conference room €300

Meeting Essentials (daily price per unit)

- Extra Flipchart €40
- Pinboard €35
- High tables with fitted covers €15





Room Layout

Spaces, Capacities & Setups.

Our room overview presents the various event spaces along with their respective capacities and seating options.

The floor plan provides a clear orientation, while the table summarizes all relevant details regarding maximum occupancy and available seating arrangements. This allows you to plan the ideal room configuration for any type of event.

You will find detailed information on the following page.

Raum	SQM²	Theater	Parlamentarisch	Bankett	U-Form	Boardroom	Stehempfang
Bibliothek	30m²	-	-	-	-	8	-
Jagdzimmer	71m²	33	26	20	26	20	30
Hofzimmer	33m²	15	12	10	12	10	15
Parkzimmer	38m²	-	-	10	-	12	20
Vestibül	25m²	60	40	50	40	20	80
Musikzimmer	89m²	80	-	50	40	50	100
Historischer Wintergarten	70m²	25	-	20	15	20	50
PHC-Lounge	67m²	-	-	-	-	-	50
Schlossgarten	3.000m²	-	-	120	-	120	400

Location

Where it all happens.



7,5 km
City centre



3,6 km
Trade fair



27 km
Airport



1,4 km
Train station

Perfectly situated between city and nature.

Schlosshotel Berlin is just 20 minutes from Berlin's vibrant city center, nestled in the exclusive Grunewald district.

Ideally located, the Berlin Messe convention center is only a 10-minute drive away, while Berlin Brandenburg Airport can be reached in approximately 25 minutes. The nearby train station is just a short 10-minute walk, offering direct connections to the heart of the capital.





Meetings & Events

Everything you need for memorable meetings and events.

Exclusive events and inspiring meetings add a special touch to your occasion — whether it's an elegant wedding, a private dinner with business partners, or a productive meeting.

Schlosshotel Berlin provides a sophisticated setting for exceptional events, from creative panels in our luxurious libraries to impressive product presentations. Premium catering and a private atmosphere ensure an unforgettable experience.

Impressions

Feel the atmosphere — captured in images.





The Royal Rooms

———— A Characterful Ensemble.

The Library and the Kaiser Room form a distinctive retreat.

A place where the timeless elegance of the library meets the imperial charm of the adjoining suite, creating an exclusive setting for meaningful encounters.

Kaiser Suite

Memories That Last a Lifetime.

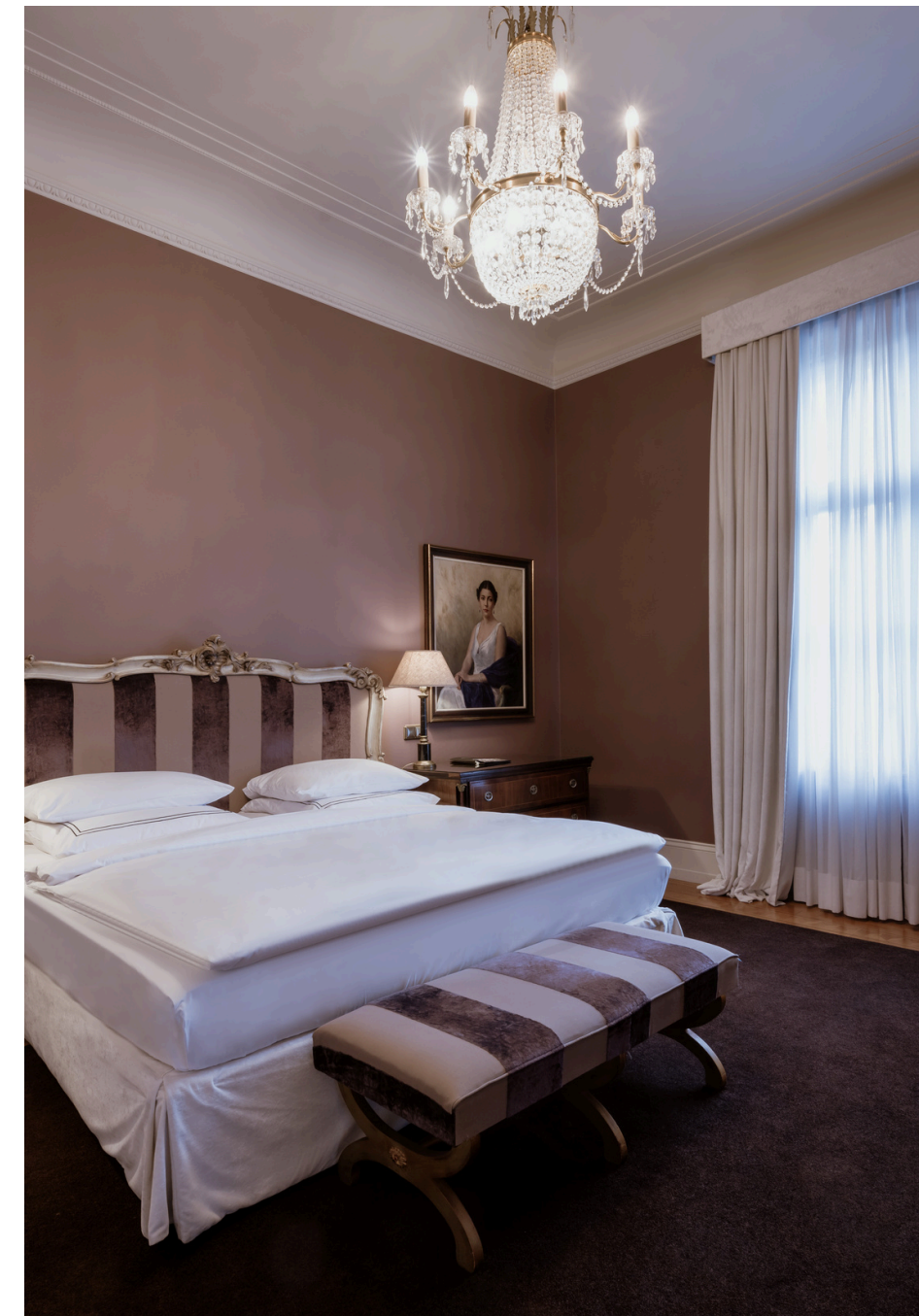
Experience ultimate comfort and timeless elegance in our spacious Kaiser Suite. High-quality materials, refined interiors, and sophisticated design create an atmosphere of exclusivity and tranquility.

Enjoy breathtaking views of the castle gardens and indulge in an ambiance where tradition and modernity blend seamlessly. Perfect for guests seeking something truly special.



Impressions

Feel the atmosphere — captured in images.



Spaces with character

Timeless elegance meets contemporary design.

Our exclusive venues combine the timeless elegance and charm of a historic castle with state-of-the-art amenities and first-class service.

Whether in grand halls or stylish salons, each space offers a unique atmosphere that transforms your event into an unforgettable experience, leaving a lasting impression on your guests.





Your event, our focus

———— The perfect venue for your occasion.



Unforgettable events at Schlosshotel

Whether it's a business conference, a glamorous gala, or an elegant wedding banquet — our castle provides the perfect setting for special occasions. Inspired by timeless elegance and modern aesthetics, our venues create an atmosphere that makes your event truly unforgettable.

Share your vision with us — we'll bring it to life together.

Signature Drinks, Timeless Moments.

In addition to our exquisite menus, the PHC Bar and Champagne Lounge offer refined snacks.

On long summer days, the terrace with its garden view invites you to enjoy an unforgettable culinary experience.



At Restaurant Catalina, experience creative à la carte dining with Mediterranean cuisine, masterfully presented by our Chef de Cuisine.

Savor culinary variety in a historic castle setting.

Golden oak paneling and magnificent chandeliers lend the space an elegant ambiance—perfect for exclusive dinners with up to 80 guests.

With open doors to the winter garden, the venue accommodates up to 110 guests.

Restaurant & Bar

— A taste of refinement and style.





Impressions

——— Feel the atmosphere — captured in images.

Charm & Style

Exquisite taste in every sip, style in every moment.

The Champagne Lounge invites you to unwind in an elegant atmosphere.

Enjoy your favorite drink in a relaxed setting and explore a curated selection of the finest champagnes from around the world.

The terrace and garden provide a serene retreat during the warmer months.

Savor the beautiful weather with a cup of coffee or a glass of wine—the perfect place for moments of relaxation in a picturesque setting.





Corporate Gatherings

Refined spaces for exceptional business events.

Whether it's an incentive, an exclusive meeting, a product presentation, or a corporate event — the Schlosshotel Berlin offers a unique setting for sophisticated business events and can be booked exclusively upon request.

With stylish venues, state-of-the-art technology, and first-class service, we provide the perfect setting for successful and unforgettable events.





Schlosshotel Berlin

———— Come as a guest, leave as a friend.

We create the perfect setting for special moments — tailored, elegant, and designed to meet your expectations.

Our team supports you from planning to the big day, always with a personal and seamless approach.

A place where dreams come true — we bring your vision to life with elegance and refinement.

Discover more impressions from the Schlosshotel on our [Instagram](#).

Schlosshotel

B E R L I N

Sebastian Schröder | Esther Schlagheck

Event Sales

Tel. +49 (0) 30 895 84 422

Mob. +49 (0) 170 640 12 53

www.schlosshotelberlin.com

Brahmsstraße 10 | 14193 Berlin

events@schlosshotelberlin.com