

Hotel Fact Sheet



Nikko Style Niseko HANAZONO is a lifestyle brand hotel located in the Niseko HANAZONO Resort. Close to beautiful Mt. Yotei and located at the foot of the Annupuri ski area, the hotel is about 2 hours' drive from Sapporo's New Chitose Airport during summer and 2.5 hours during winter.

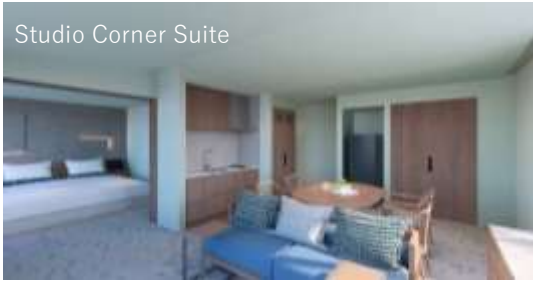
- Hotel name: Nikko Style Niseko HANAZONO
- Location: 328-51 Iwaobetsu, Kutchan-cho, Abuta-gun, Hokkaido, 044-0082 Japan
- Tel: +81 (0)136-55-6110
- Email: info@nisekohanazono.nikkostyle.jp
- Opening date: December 15th, 2024
- Website: <https://nisekohanazono.nikkostyle.jp/en/> (Hotel website)
<https://www.okura-nikko.com/japan/niseko/nikko-style-niseko-hanazono/> (Brand website)
- Floor space: Approx. 16,244 m², 8 floors above ground and 1 basement level
- No of rooms: 234 rooms, all non-smoking
- Check-in time: 15:00
- Check-out time: 11:00
- Food & beverages: All-day dining, Cafe & Bar (both on the 1st floor), Nikko Club Lounge (2nd floor)
- Other facilities:
 - 1st floor Two banquet rooms (can be combined into one), ski lockers (for hotel guests only), shop, smoking room
 - 2nd floor Natural hot spring (indoor and outdoor baths and a sauna), fitness gym, pay laundromat with dryer, microwave oven, vending machine
 - Others Underground paid parking (¥3,000 per day per car for staying guests; discounts available for visitors), free outdoor parking, ice machines (floors 2, 3, 5, 7, 8)

Room type chart :

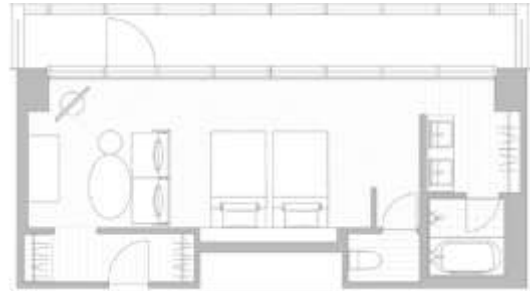
	Room types	Floors	Room size	Number of rooms
Superior	Superior (Twin, King)	2-6F	Twin 28 m ² ~	68
			King 30 m ² ~	91
	Superior Club (Twin, King)	7-8F	Twin 28 m ² ~	17
			King 30 m ² ~	27
	Superior Family Club View	8F	34m ² ~	2
Premium Panorama Yotei View	8F	33m ²	1	
Deluxe	Deluxe (Twin, King)	3-7F	Twin 44m ²	5
			King 42m ²	5
	Premium Deluxe Family View	8F	40m ² ~	2
	Premium Deluxe King View	8F	40m ² ~	3
Studio Suite	Studio Suite (Twin, King)	3-7F	55m ²	5
			57m ²	5
	Studio Corner Suite	3F	58m ²	1
	Premium Studio Suite View	8F	56m ²	1
	Nikko Style Suite	8F	108m ²	1
Total no. of rooms				234

- All guest rooms are equipped with AI speakers, smart TVs (43 inches or larger), and air purifiers with humidifying functions, BALMUDA kettles, and ReFa hair dryers. A premium airweave mattresses are used for sofa beds and Simmons mattresses for extra beds.
- Hot spring water is available in the bathrooms of guest rooms on the 7th and 8th floors.

Studio Corner Suite



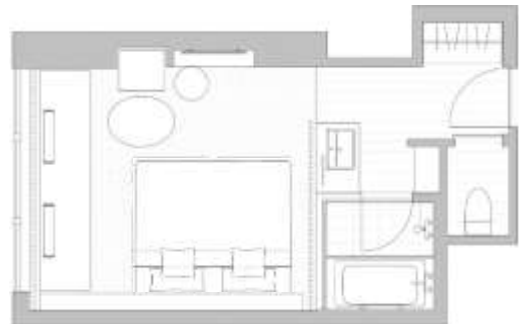
Premium Deluxe Family View



Superior Club King



Superior King



Facilities:



Style Kitchen (All-day-dining, ground floor)

138 seats and 3 private rooms

Operating hours: breakfast 06:45-10:30 (last orders 10:00) / Lunch 11:30-14:30 (last orders 14:00) / Dinner 17:30-21:00 (last orders 20:30)

Enjoy a Japanese & Western buffet breakfast in the morning, lunch time and dinner time, featuring fresh produce, much of it local. Three private "Style Lodge" rooms are available, each equipped with a fireplace and TV, providing a cozy dining environment.



Cafe & Bar (Ground floor) 17 seats

Operating hours: 11:30-22:30 (last orders 22:00)

This cafe and bar offers a wide variety of drinks produced using the pure water of Hokkaido. The coffee is brewed with a siphon with a rich aroma under warm halogen light, and the sound of the brewing process makes for a cafe experience that can be enjoyed using all five senses. The bar also boasts a lineup of locally brewed gins, whiskeys, wines, original cocktails, and other alcoholic beverages. Relax with the soothing music from the adjacent DJ booth area and enjoy a special time of day.



Communal Lobby (Ground floor)

The Communal lobby is an open space where hotel guests and the local community can come together. The interior design represents the changing seasons and nature of Niseko, and the library area offers a comfortable atmosphere with the warmth of wooden materials.



Natural Hot Springs (2nd floor)

Operating hours: 06:00-23:00

Natural hot springs with a sauna and outdoor bath for the exclusive use of staying guests. Featuring what is known as the "hot water of beauty", this spring is gentle on the skin, relieves muscle tension, warms up the body, improves gastrointestinal functions, and relieves fatigue, thereby promoting good health.



Nikko Club Lounge (2nd floor) 59 seats, 1 private room

Operating hours: 06:45-21:00

Breakfast: 06:45-09:30 / Cocktails: 17:30-19:30

Deluxe and studio suite guests, as well as those staying in Superior Club rooms, can enjoy a continental breakfast as well as free drinks and snacks during cocktail hour.



Rooftop Lounge (8th floor)

The 67 sqm Rooftop Lounge attached to the Nikko Style Suite features a large balcony and a wall of windows overlooking the natural beauty of the Niseko Hanazono area. The lounge can be used in a variety of ways, including for cocktail parties after dinner.



Banquet rooms (Ground floor)

Offering beautiful views of Hanazono from their windows, banquet rooms are available for meetings and conferences.

Style Hanazono: 63m² / Style Niseko 73m² /

2 venues combined: 136m²

Standing buffet: 10 tables, 60-80 persons

Dinner style: 8 tables, 40-50 persons



Ski Lockers (Ground floor, Dec-Mar only)

Ski lockers for storing skis and snowboards are available for the exclusive use of our staying guests. These are a base offering smooth access to the slopes.



Fitness gym (2nd floor) Operating hours: 24 hours

Sustainable gym equipped with German fitness brand

"WaterRower" machines. The handcrafted wooden equipment is made by artisans and uses less electricity, providing a special experience of sustainable work-out time.



The Shop (Ground floor)

Operating hours: 08:00-20:00

Original hotel goods, stylish local store products, and items from Hokkaido are available in this shop. You'll find your favorite items as souvenirs or memories of your trip.

Access to Hanazono

Airport name: **New Chitose Airport (CTS)**



- By Ski Bus between New Chitose Airport to the hotel

[Resort Liner:](#)

2 round trips every day during 14 Dec 2024 – 30 Mar 2025.

[Niseko Direct Shuttle:](#)

1 round trip every day during 01 Dec 2024 – 31 Mar 2025.

- Private taxi

[KS Limousine](#)

Car type and fee are determined by the number of passengers, number of luggage, etc.

- By JR train between New Chitose Airport to Kutchan via Otaru – approx. 3 hours
- By taxi from/to Kutchan St. - Approx. 10 min
- By car from/to New Chitose Airport to Hanazono via Route 276 – approx. 2.5 hrs in winter, 2 hrs in summer
- Local access: 2 free shuttle buses run by our hotel (Kutchan station↔Hotel↔Hirafu Welcome Center) and by Hanazono resort (Hanazono↔Hirafu Welcome Center) will be available.

About Nikko Style brand

"Nikko Style" is the only lifestyle hotel brand of Okura Nikko Hotels. The brand concept is a hotel that attracts people seeking new travel styles and experiences. Following Nikko Style Nagoya (opened in 2020), Niseko HANAZONO is the second hotel to open in Japan.

As of 30 Sep, 2024